



City of Valdez

212 Chenega Ave.
Valdez, AK 99686

Meeting Agenda

City Council

Tuesday, September 4, 2018

6:00 PM

Council Chambers

Work Session (ECI - Kelsey Plaza Project Phase II) & Regular Meeting

WORK SESSION AGENDA - 6:00 pm

Transcribed minutes are not taken for Work Sessions. Audio is available upon request.

1. [Work Session - Kelsey Dock Phase II](#)

Attachments: [PDF - Kelsey Dock - Phase II Concepts](#)

REGULAR AGENDA - 7:00 PM

I. CALL TO ORDER

II. PLEDGE OF ALLEGIANCE

III. ROLL CALL

IV. PUBLIC BUSINESS FROM THE FLOOR

V. CONSENT AGENDA

1. [Approval To Go Into Executive Session - City Clerk Contract Amendment](#)

VI. NEW BUSINESS

1. [Approval of Change Order #4 with F & W Construction Company, Inc., for the Kelsey Dock Interpretive Center Phase I Project in the Amount of \\$56,125.64](#)

Attachments: [Kelsey Dock Interpretive Center - Phase 1 - CO # 4](#)
 [Kelsey Dock Interpretive Center - Phase I - Change Order Log](#)
 [Kelsey RFP-04A Heat Strip Heaters 08.20.18](#)

2. [Approval of Reimbursement to David Lawrence for Plumbing Fixtures in the Amount of \\$297.99.](#)

Attachments: [David Lawrence Letter](#)

VII. REPORTS

1. [Legal Billing - July 2018](#)

Attachments: [Legal Billing July 2018](#)

VIII. CITY MANAGER / CITY CLERK / CITY ATTORNEY / MAYOR REPORTS

1. City Manager Report
2. City Clerk Report
3. City Attorney Report
4. City Mayor Report

IX. COUNCIL BUSINESS FROM THE FLOOR

X. EXECUTIVE SESSION

XI. RETURN FROM EXECUTIVE SESSION

XII. ADJOURNMENT



Legislation Text

File #: 18-0297, **Version:** 1

ITEM TITLE:

Work Session - Kelsey Dock Phase II

SUBMITTED BY: Nathan Duval, Capital Facilities Director

FISCAL NOTES:

Expenditure Required: [Click here to enter text.](#)

Unencumbered Balance: [Click here to enter text.](#)

Funding Source: [Click here to enter text.](#)

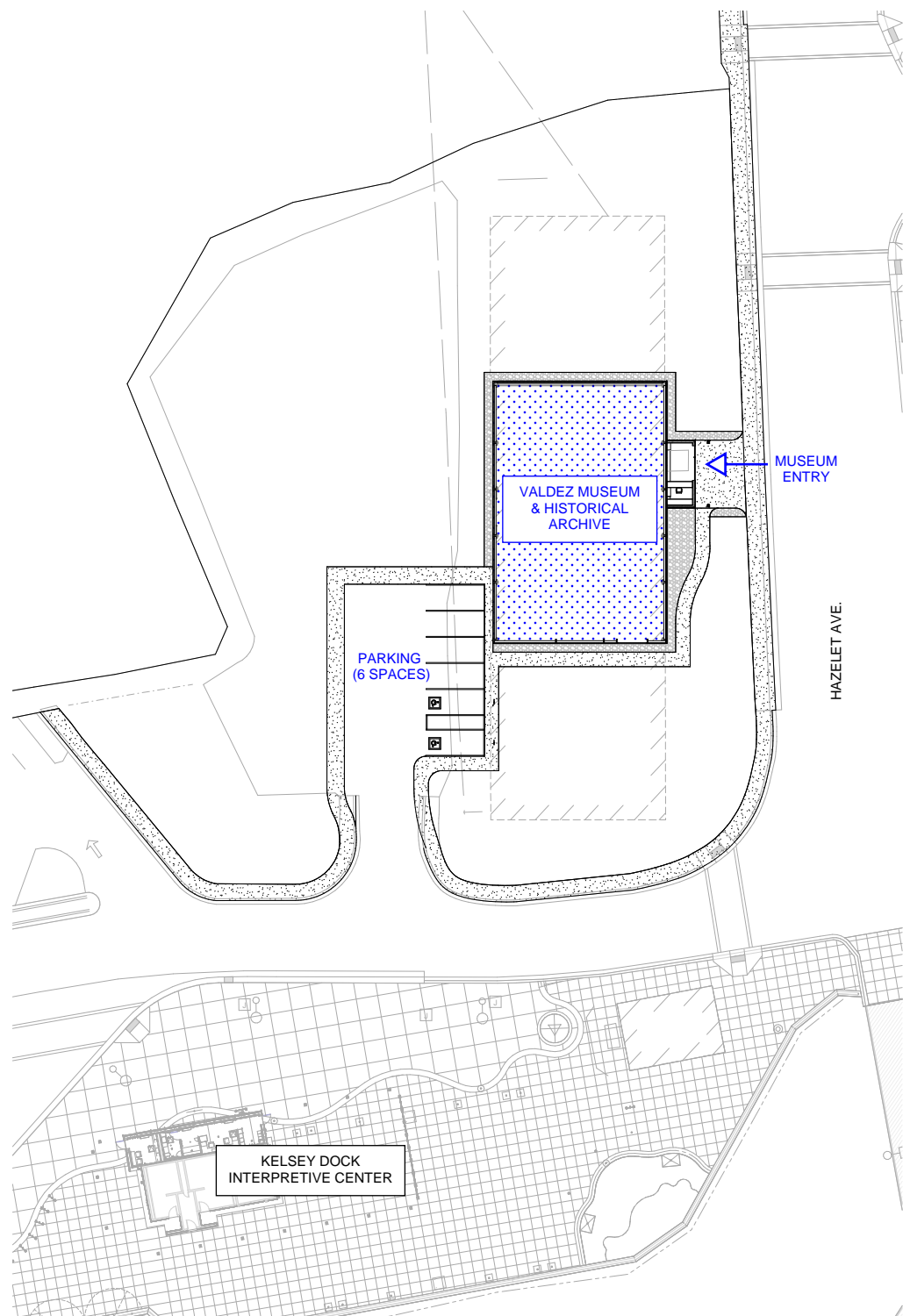
RECOMMENDATION:

[Click here to enter text.](#)

SUMMARY STATEMENT:

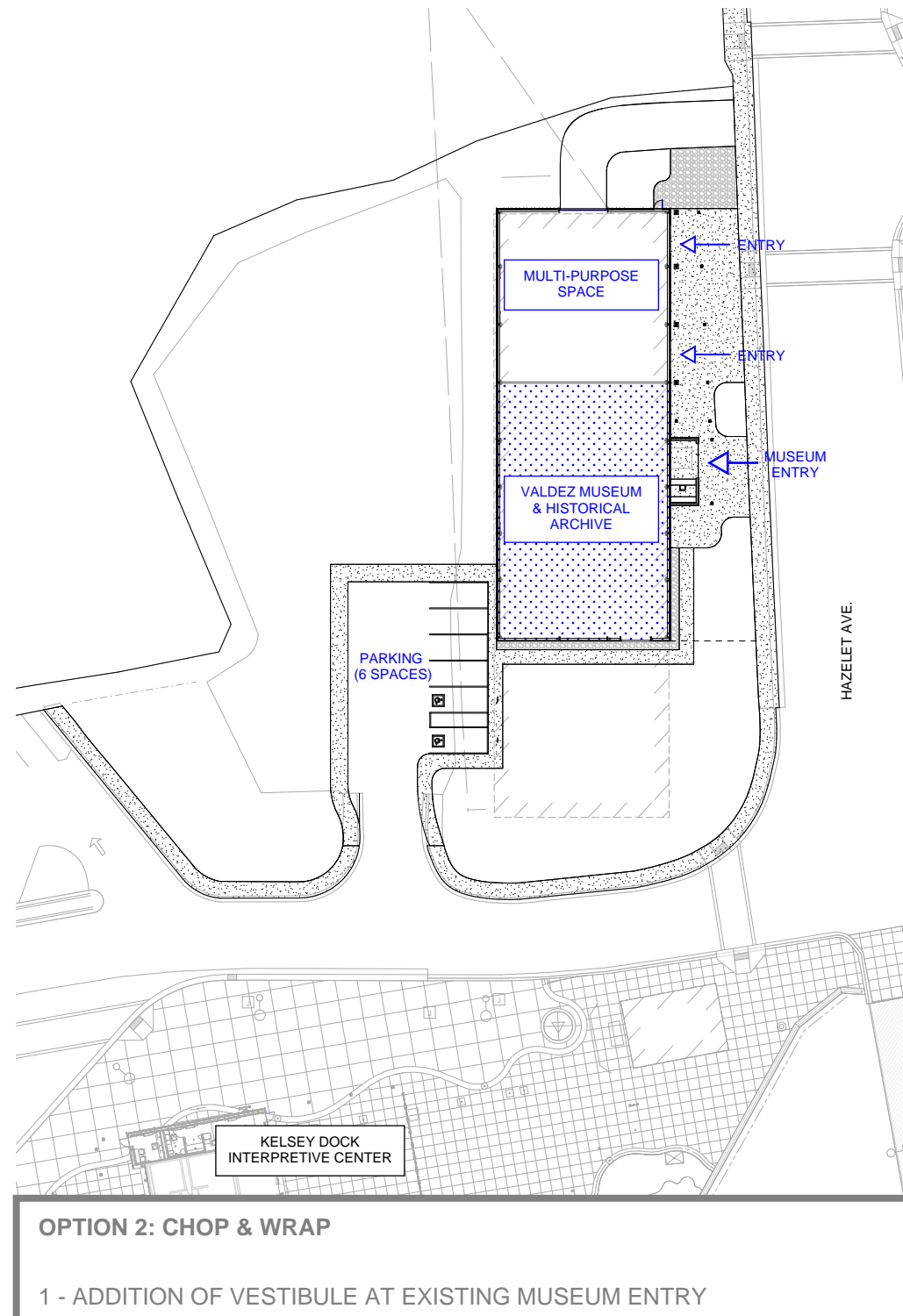
ECI/Hyer, Inc. will present options for the yellow warehouse as part of Kelsey Dock Phase II.

Please reference attached documents.



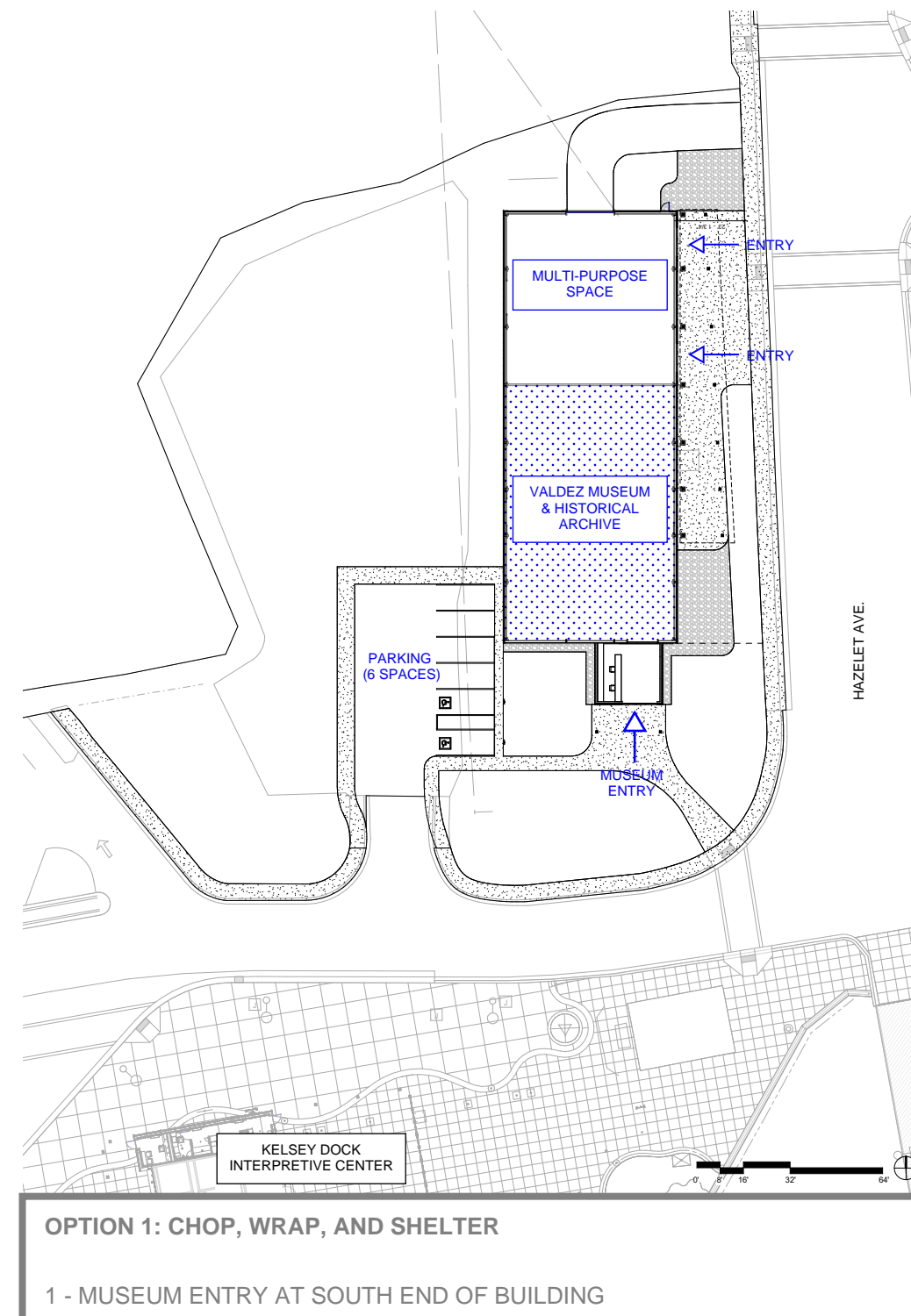
OPTION 3: CHOP, CHOP & WRAP

- 1 - ADDITION OF VESTIBULE AT EXISTING MUSEUM ENTRY
- 2 - ENTRY VESTIBULE MASSING, MATERIAL, AND STRUCTURE, CREATE VISUAL CONNECTION TO KELSEY DOCK INTERPRETIVE CENTER. WAREHOUSE 1 RE-CLADDING MATERIALS ECHO MATERIAL CHOICE AT INTERPRETIVE CENTER.



OPTION 2: CHOP & WRAP

- 1 - ADDITION OF VESTIBULE AT EXISTING MUSEUM ENTRY
- 2 - MULTIPURPOSE SPACE AT NORTH END OF WAREHOUSE 1
- 3 - CANOPIES WITH POWER/DATA AT OVERHEAD DOOR ENTRIES TO MULTIPURPOSE SPACE
- 4 - CANOPY AND ENTRY VESTIBULE MASSING, MATERIAL, AND STRUCTURE, CREATE VISUAL CONNECTION TO KELSEY DOCK INTERPRETIVE CENTER. WAREHOUSE 1 RE-CLADDING MATERIALS ECHO MATERIAL CHOICE AT INTERPRETIVE CENTER
- 5 - DEMOLITION OF SOUTHERN THIRD OF WAREHOUSE 1



OPTION 1: CHOP, WRAP, AND SHELTER

- 1 - MUSEUM ENTRY AT SOUTH END OF BUILDING
- 2 - MULTIPURPOSE SPACE AT NORTH END
- 3 - CANOPY WITH POWER/DATA CONNECTION ALONG EAST FACE OF WAREHOUSE 1
- 4 - CANOPY AND ENTRY VESTIBULE MASSING, MATERIAL, AND STRUCTURE, CREATE VISUAL CONNECTION TO KELSEY DOCK INTERPRETIVE CENTER. WAREHOUSE 1 RE-CLADDING MATERIALS ECHO MATERIAL CHOICE AT INTERPRETIVE CENTER
- 5 - DEMOLITION OF SOUTHERN THIRD OF WAREHOUSE 1



OPTION 1: CHOP, WRAP, AND SHELTER

1 - MUSEUM ENTRY AT SOUTH END OF BUILDING
2 - MULTIPURPOSE SPACE AT NORTH END
3 - CANOPY WITH POWER/DATA CONNECTION ALONG EAST FACE OF WAREHOUSE 1
4 - CANOPY AND ENTRY VESTIBULE MASSING, MATERIAL, AND STRUCTURE, CREATE VISUAL CONNECTION TO KELSEY DOCK INTERPRETIVE CENTER. WAREHOUSE 1 RE-CLADDING MATERIALS ECHO MATERIAL CHOICE AT INTERPRETIVE CENTER
5 - DEMOLITION OF SOUTHERN THIRD OF WAREHOUSE 1









OPTION 2: CHOP & WRAP

1 - ADDITION OF VESTIBULE AT EXISTING MUSEUM ENTRY
 2 - MULTIPURPOSE SPACE AT NORTH END OF WAREHOUSE 1
 3 - CANOPIES WITH POWER/DATA AT OVERHEAD DOOR ENTRIES TO MULTIPURPOSE SPACE
 4 - CANOPY AND ENTRY VESTIBULE MASSING, MATERIAL, AND STRUCTURE, CREATE VISUAL CONNECTION TO KELSEY DOCK INTERPRETIVE CENTER. WAREHOUSE 1 RE-CLADDING MATERIALS ECHO MATERIAL CHOICE AT INTERPRETIVE CENTER
 5 - DEMOLITION OF SOUTHERN THIRD OF WAREHOUSE 1









OPTION 3: CHOP, CHOP & WRAP

1 - ADDITION OF VESTIBULE AT EXISTING MUSEUM ENTRY
 2 - ENTRY VESTIBULE MASSING, MATERIAL, AND STRUCTURE, CREATE VISUAL CONNECTION TO KELSEY DOCK INTERPRETIVE CENTER. WAREHOUSE 1 RE-CLADDING MATERIALS ECHO MATERIAL CHOICE AT INTERPRETIVE CENTER.









Legislation Text

File #: 18-0298, **Version:** 1

ITEM TITLE:

Approval To Go Into Executive Session - City Clerk Contract Amendment

SUBMITTED BY: Sheri Pierce, City Clerk

FISCAL NOTES:

Expenditure Required: [Click here to enter text.](#)

Unencumbered Balance: [Click here to enter text.](#)

Funding Source: [Click here to enter text.](#)

RECOMMENDATION:

[Click here to enter text.](#)

SUMMARY STATEMENT:

AS 44.62.310(c) allows for the discussion of an employee contract to be conducted in executive session.



Legislation Text

File #: 18-0299, **Version:** 1

ITEM TITLE:

Approval of Change Order #4 with F & W Construction Company, Inc., for the Kelsey Dock Interpretive Center Phase I Project in the Amount of \$56,125.64

SUBMITTED BY: Nathan Duval, Capital Facilities Director

FISCAL NOTES:

Expenditure Required: \$56,125.64

Unencumbered Balance: \$410,329.81

Funding Source: 312-6400-58000 City Contribution Exp.

RECOMMENDATION:

Approve Change Order #4 with F & W Construction Company, Inc., for the Kelsey Dock Interpretive Center - Phase I project in the Amount of \$56,125.64.

SUMMARY STATEMENT:

The Port requested the option of installing heaters in the Kelsey Dock canopy. Attached is a proposal from F & W Construction, Inc. to assist with a design build effort to install said heaters. The install cost is approximately \$56,000.00 with an additional approximately \$10,000.00 in design. A deductive change order is in process for value engineering the utility routing to help offset some of this cost.



CHANGE ORDER
CITY OF VALDEZ

TO: F & W Construction Company, Inc.
3821 Dee Circle
Anchorage, AK 99516

DATE ISSUED: September 5, 2018
CHANGE ORDER NO. 04
COST CODE NO. 312-6400-58000
PROJECT NO. 17-312-6400
CONTRACT NO. 1370

PROJECT: Kelsey Dock Interpretive Center – Phase I

Distribution to:

Engineering _____
Owner _____
Contractor _____
Other _____

You are directed to make the changes in this CONTRACT as follows:

Install (16) each Electric Heaters in soffit per RFI 12 and ECI's email narrative dated 7/20/18, and as shown in redlined sheet A9.1. Please note the following: 1. Include rough openings only in soffit framing, no GWB "tent" is included. Back of heater to be exposed above soffit finish. 2. Attached qualifications concerning available power and circuits by Puffin Electric. 3. All engineering to be provided by ECI, per RFP 4A.

Justification:

Stakeholder request to include heaters to make the canopy a more functional space during various times of the year.

Not valid until signed by both the Mayor and City Clerk. Signature of Contractor indicates his agreement herewith, including any adjustment in **CONTRACT** sum or **CONTRACT** time.

The original CONTRACT sum was	\$ <u>2,728,168.00</u>
Change by previously authorized Amendments	\$ <u>(57,362.56)</u>
The CONTRACT sum prior to this Change Order was	\$ <u>2,673,805.44</u>
The CONTRACT sum will be <i>increased</i> by this Change Order	\$ <u>56,125.64</u>
New CONTRACT sum including this Change Order will be	\$ <u>2,729,931.08</u>

CONTRACT time will be *unchanged*. The date of Substantial Completion as of the date of this Change Order therefore is February 11, 2019.

Agreement Between City of Valdez and
F & W Construction Company, Inc.
Project: Kelsey Dock Interpretive Center – Phase I
Contract No.: 1370, Change Order 4
Page 2 of 2

CONTRACTOR:
F & W CONSTRUCTION COMPANY, INC.

Name of Company Rep Authorized to Sign

By: _____

Title: _____

Date: _____

Federal ID #: _____

CORPORATE SEAL

Attest: _____
Corporate Secretary

APPROVED AS TO FORM:
Brena, Bell & Clarkson, P.C.

Jon S. Wakeland

Date: _____

CITY OF VALDEZ, ALASKA
APPROVED:

Jeremy O'Neil, Mayor

Date: _____

ATTEST:

Sheri L. Pierce, MMC, City Clerk

Date: _____

Elke Doom, City Manager

Date: _____

RECOMMENDED:

Nathan Duval, Capital Facilities Director

Date: _____

KELSEY DOCK INTERPRETIVE CENTER - PHASE I contract no. 1370

DOCUMENT	DESCRIPTION	AMOUNT
Original Contract		\$ 2,728,168.00
Change Order #1	Remove & replace existing concrete	\$ 27,653.00
Change Order #2	Import fill for excavated areas and remove excavated materials	\$ 29,668.44
Change Order #3	Provide credit for revised UG Utility P.O.C.; deleting additive alternate #3	\$ (111,684.00)
TOTAL		\$ 2,673,805.44

**Note - change orders 2 and 3 are not fully executed.

F & W Construction Company, Inc.**PROJECT:** Kelsey Dock Interpretive Center**CONTRACT:** 20321**F&W JOB#:** 20318 **COST CODE:** 3000**DATE:** August 20, 2018**DESCRIPTION**

RFI	12	RFP	4A
------------	-----------	------------	-----------

Install (16) each 3200W Electric Heaters in soffit per RFI 12 and ECI's email narrative dated 7/20/18, and as shown in redlined sheet A9.1. Please note the following: 1. We have included rough openings only in soffit framing, no GWB "tent" is included. Back of heater to be exposed above soffit finish. 2. Attached qualifications concerning available power and circuits by Puffin Electric. 3. All engineering to be provided by ECI.

CONTRACTOR'S COSTS

SUBCONTRACTOR TOTAL (See Sheet 4 of 4)	38,560.00	
SUBCONTRACTOR MARKUP @ 5 % X 0.05	<u>1,928.00</u>	
SUBCONTRACTOR TOTAL	40,488.00	40,488.00
LABOR TOTAL (See Sheet 2 of 4)	11,231.64	
MATERIALS / MISC TOTAL (See Sheet 3 of 4)	2,384.00	
EQUIPMENT TOTAL (See Sheet 4 of 4)	<u>600.00</u>	
SUBTOTAL	14,215.64	
F & W FEE @ 10% X 0.10	<u>1,422.00</u>	
F & W TOTAL	15,637.64	<u>15,637.64</u>
F & W / SUBCONTRACTOR TOTALS		56,125.64
BOND / INSURANCE @ 0% X 0.00		0.00
TOTAL PROPOSAL		<u><u>56,125.64</u></u>

COST CODE: 3000



Direct Labor Breakdown

[illegible]

Trade	QTY	MH	MH Total	Rate	Total	Description
Carpenter Gen Frmn	1	28.0	28.0	90.69	2,539.32	Frame R.O's
Carpenter Journeyman	1	112.0	112.0	77.61	8,692.32	Frame R.O's
			0.0		0.00	
			0.0		0.00	
			0.0		0.00	
			0.0		0.00	
			0.0		0.00	
			0.0		0.00	
			0.0		0.00	
			0.0		0.00	
			0.0		0.00	
			0.0		0.00	
			0.0		0.00	
			0.0		0.00	
			0.0		0.00	
			0.0		0.00	
			0.0		0.00	
			0.0		0.00	
			0.0		0.00	
			0.0		0.00	
			0.0		0.00	
			0.0		0.00	
Total			140.0		11,231.64	

F & W Construction Company, Inc.**PROJECT:** Kelsey Dock Interpretive Center**CONTRACT:** 20321**F&W JOB#:** 20318**COST CODE:** 3000**Material Costs**

#	Description	QTY	*UOM	Unit Price	Cost
1	358 T 200 - 54 Track	320	LF	2.20	704.00
2					0.00
3					0.00
4					0.00
5					0.00
6					0.00
7					0.00
8					0.00
9					0.00
10					0.00

Total Material Costs

704.00

Miscellaneous Costs

#	Description	QTY	*UOM	Unit Price	Cost
1	Camp Days	14		120.00	1,680.00
2					0.00
3					0.00
4					0.00
5					0.00
6					0.00
7					0.00
8					0.00
9					0.00
10					0.00

Total Miscellaneous Costs

1,680.00

Total Material + Miscellaneous Costs

2,384.00

*UOM is Unit of Measurement

F & W Construction Company, Inc.**PROJECT:** Kelsey Dock Interpretive Center**CONTRACT:** 20321**F&W JOB#:** 20318**COST CODE:** 3000**Equipment Breakdown**

#	Description	Unit	Rate	Total
1	Manlift - weekly rate	2.0	300.00	600.00
2				0.00
3				0.00
4				0.00
5				0.00
6				0.00
7				0.00
8				0.00
Total Equipment Costs				600.00

Subcontractor

#	Subcontractor	Total
1	Puffin (Attached)	38,560.00
2		
3		
4		
5		
6		
7		
8		
9		
10		
Total Subcontractor Costs		38,560.00

PUFFIN ELECTRIC INC.				
PROJECT:	Kelsey Dock interperative center			
SUBJECT:	Canopy ceiling Heat strip Design 1			
8/15/2018				
	Cost/Unit	Quantity	Item cost	Labor Hours
Install 16 ceiling mounted recessed radiant heaters				
16 - 240v , 3200w Heat strip (flush mounted heaters)	\$ 593.30	16	\$ 9,492.80	
Flush mounting kit	\$ 323.00	16	\$ 5,168.00	
3/4"Conduit with fittings and assessories	\$ 80.00	7	\$ 560.00	
Wire	\$ 130.00	7	\$ 910.00	
Camp Man Days: 2 man crew, 1 day	\$ 150.00	10	\$ 1,500.00	
Labor (2 Men, 10 day)				95
Truck & Work Trailer: Days		10		
16 ea Circuit relay with 4 switches, 2 remote control	\$ 3,520.00	1	\$ 3,520.00	
16-240v -20 amp breakers	\$ 79.12	16	\$ 1,265.92	
freight		1	\$ 400.00	
Item cost Without Markup			\$ 22,816.72	
12% Overhead			\$ 2,738.01	
Cost Plus Overhead			\$ 25,554.73	
10% Profit			\$ 2,555.47	
Total Items Cost with OH & Profit			\$ 28,110.20	
Labor Hours total				95
Labor Flat Rate				\$ 110
Labor Cost				\$ 10,450
Material:	\$ 28,110			
Labor:	\$ 10,450			
Total Cost:	\$ 38,560			

From: [David Popiel](#)
To: [Nathan Duval \(nduval@ci.valdez.ak.us\)](#); [Robby Capps](#)
Cc: [Brian Meissner](#); [Saigen Harris](#); ["Mike Felch"](#)
Subject: Kelsey Dock - Radiant heating in ceiling
Date: Friday, July 20, 2018 10:57:56 AM
Attachments: [image001.png](#)
[Basis of Design 2 - InfratechHeatersUSA Cutsheet.pdf](#)
[2018_0716 - Ceiling Heaters Draft Layout.pdf](#)
[Basis of Design 2 - Infratech Flush Mount.pdf](#)
[Basis of Design 1 - HEATSTRIP-USA-RECESS-KIT-MANUAL-Rev-C.pdf](#)

Good morning Nate, Robbie,

Recently, Nate and other members of the Owner team had discussions regarding adding radiant heating in the ceiling at the Interpretive Center. Nate requested that the design team look into the feasibility of adding the heaters. ECI and PDC looked into it and we determined that heating could be added to the ceiling with the current electrical service. We picked a basis of design product, located architectural detailing that fits with our project, and generated a basic layout. After discussing our findings with the Nate, we would like to proceed with the addition of the heaters as a design/build effort between F&W (and Puffin) and the design team.

To that end, a couple things follow from this, see notes below

- **All:** This will require an RFP, I believe that we have done several so far on the project, I believe that Mike and Saigen have handled this previously.
- **Robbie/Saigen:** This is a late add to the project so please review and keep us in the loop of the feasibility and impact of the effort.
- **Robbie/Saigen:** We are in the process of compiling the information we gathered for the addition of the heaters which I summarized above. I have attached a preliminary draft of that information to aid in the discussion of this. We will have a formal version over to you early next week. Can you review internally and ask Puffin what additional information they would need to go ahead with the design/build effort?

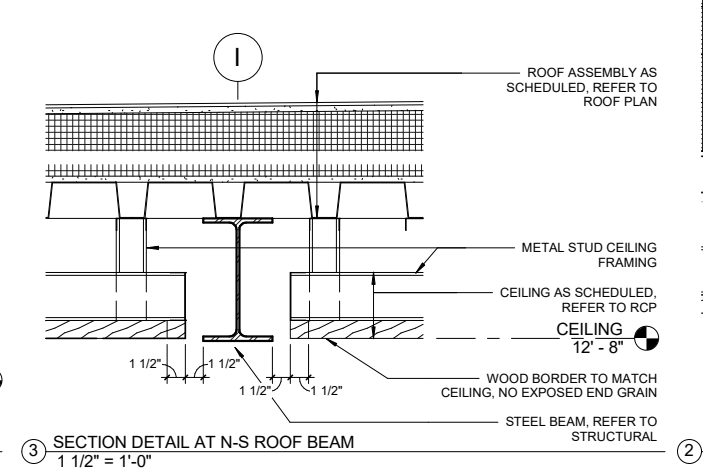
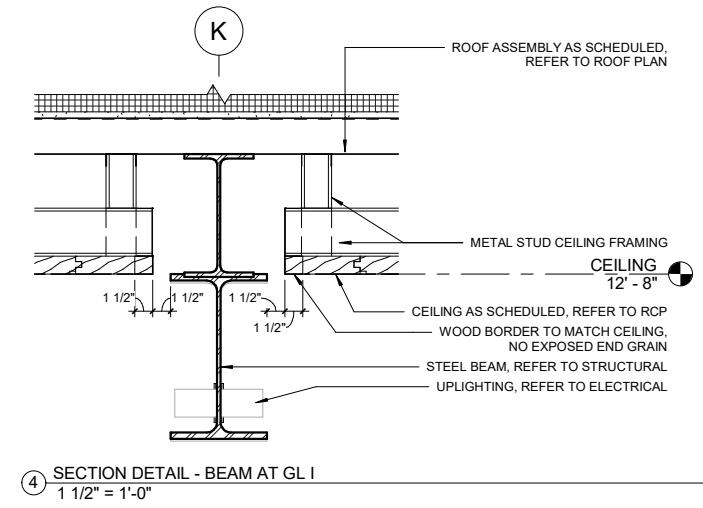
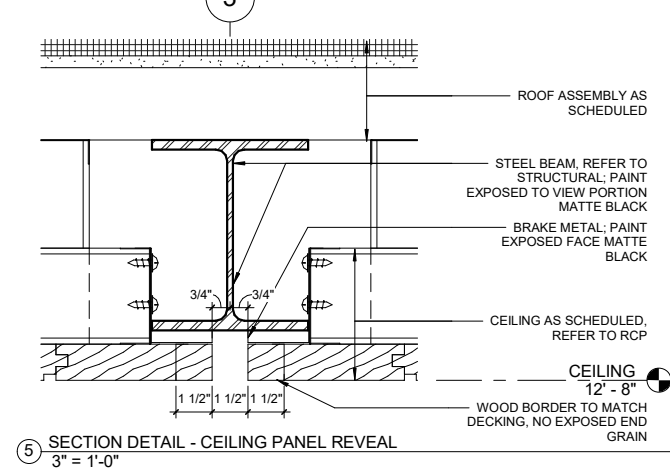
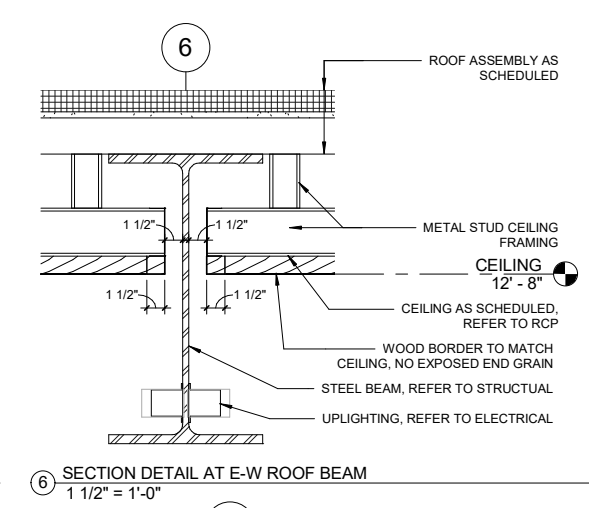
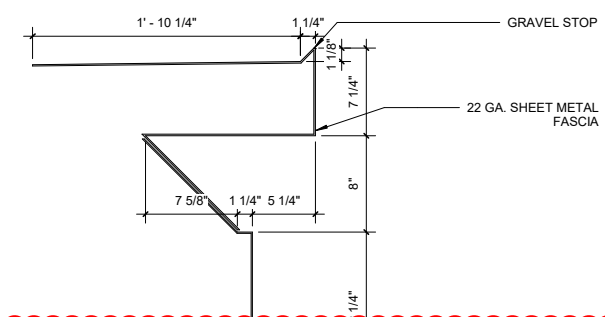
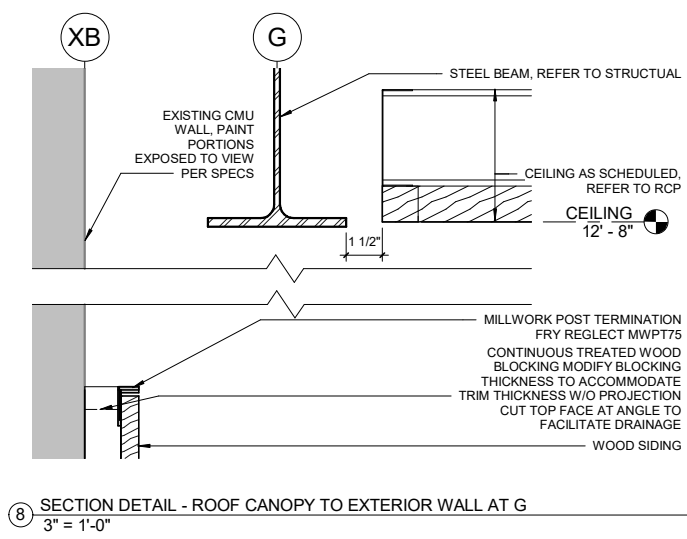
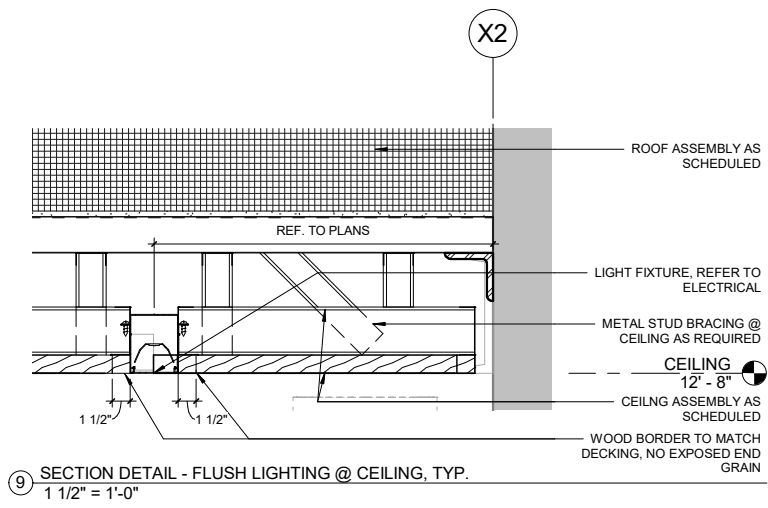
The intent behind this email is to get this moving prior to the release of formalized information so pardon the piece meal nature of this. I am out of the office today but am available on my cell (303.518.402) and over email. Give me a call or email with questions.

Thanks,

ECI

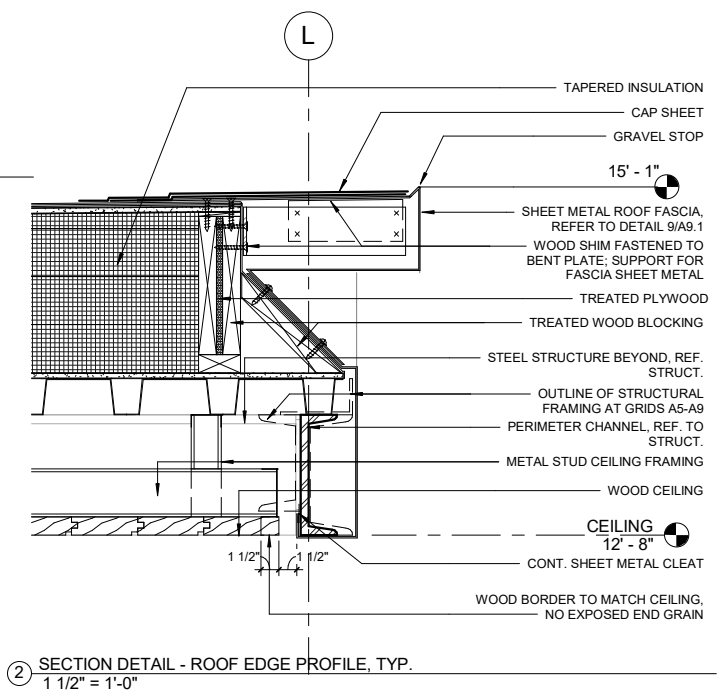
David Popiel AIA, LEED AP

3909 Arctic Boulevard, Suite 103
Anchorage, Alaska 99503
(907) 565-5012
www.ecialaska.com



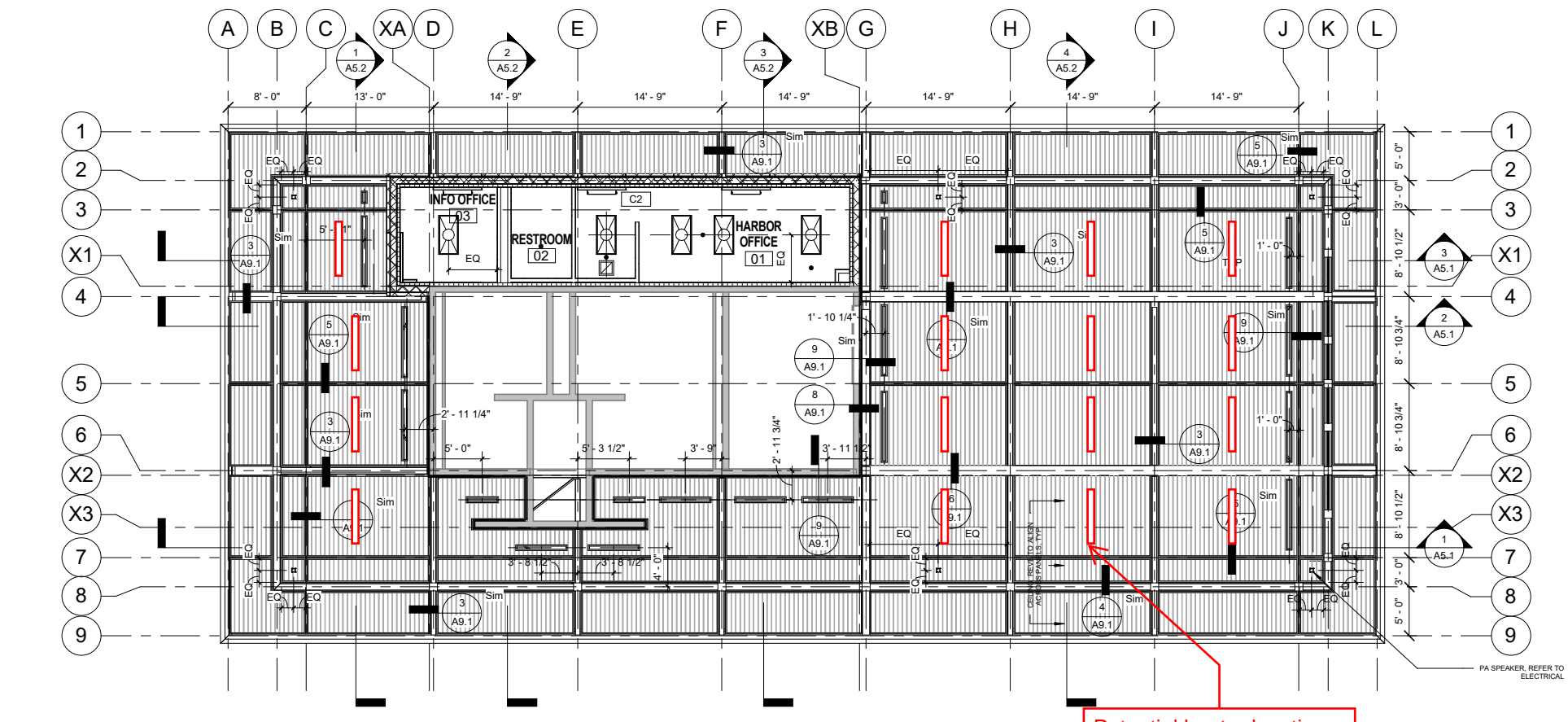
REFLECTED CEILING PLAN GENERAL NOTES

1. DIMENSIONS TO LIGHT FIXTURES ARE FROM GRIDLINE TO CENTERLINE OF FIXTURE UNLESS NOTED OTHERWISE.
2. REFER TO ELECTRICAL FOR FIXTURE LENGTHS.
3. LIGHT FIXTURES TO BE CENTERED ON CEILING PANEL UNLESS OTHERWISE NOTED.
4. CEILING REVEALS/CHANNEL GROOVE TO ALIGN ACROSS WIDTH'S OF CEILING, REFER TO DRAWINGS FOR REVEAL LAYOUT.

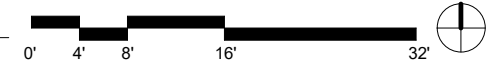


On the 480V main panel we can install 16 of the 4000W heaters, or 12 of the 6000W heaters maximum on the existing power distribution system. On the 240V panel C we are limited to 10kW of additional load. Probably not enough capacity to make a difference in the heating/comfort in the space.

The manufacturers literature is conflicting on the available voltages for the electric heaters. The website lists 480V options but the cutsheets only go up to 240V. We have a call into the rep to confirm 480V is possible. Worst case back up plan would be that the 480V panel supply a transformer which would provide the 240V to the heaters.



Potential heater locations



©2018 ECI, Inc.

CITY OF VALDEZ
KELSEY DOCK INTERPRETIVE CENTER



Kelsey Dock
Possible ceiling heater
location
7/11/2018

REFLECTED CEILING PLAN
AUTHOR: DPP
REVISION:
ISSUE DATE: 03.14.2018
OWNER PROJECT NO.: -

RECESS KIT

BASIS OF
DESIGN1 -
PREFERRED

THHAC-009

THHAC-011

THHAC-012

INSTRUCTION MANUAL

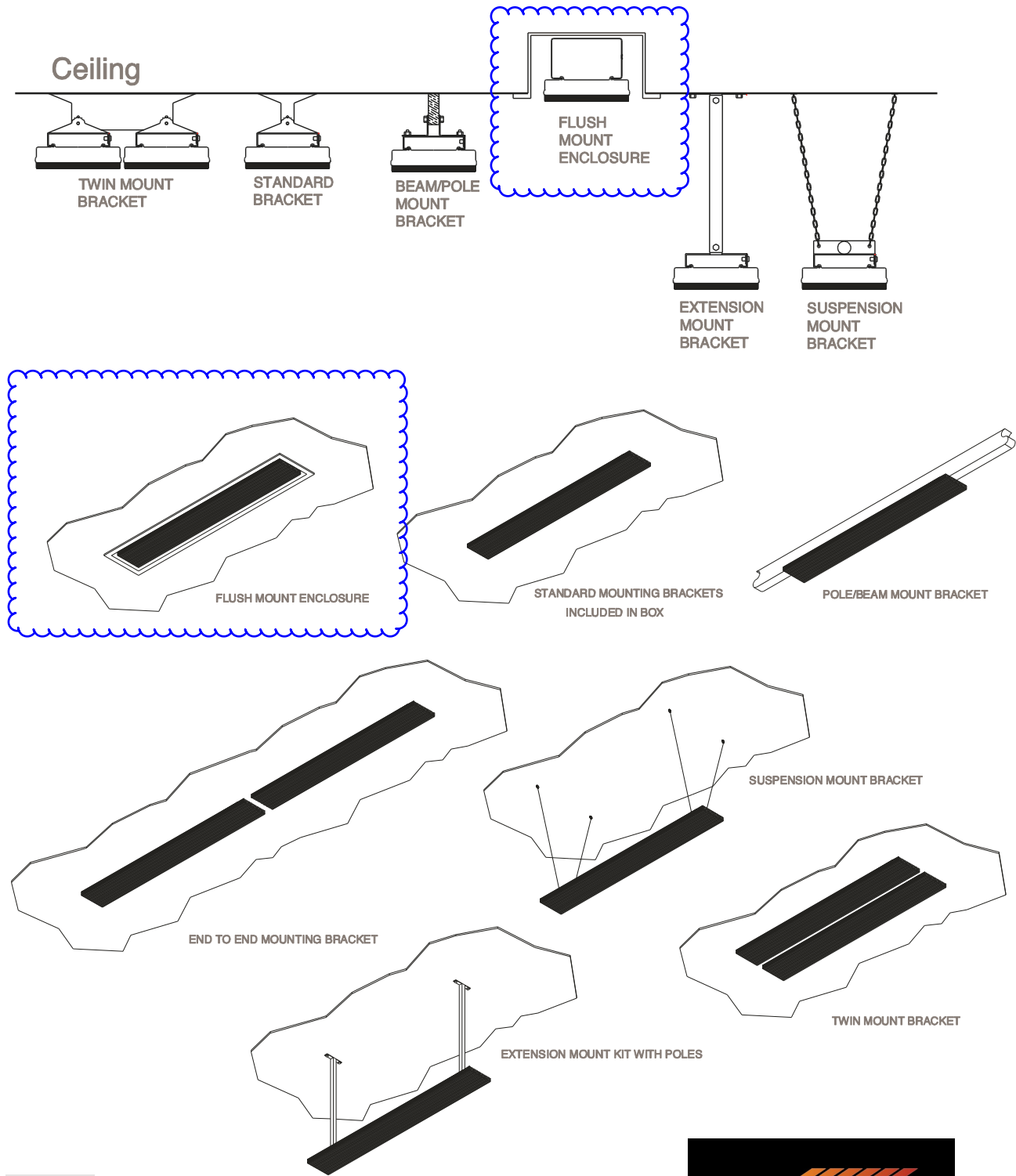


MOUNTING OPTIONS

BASIS OF
DESIGN1 -
PREFERRED

The installation of HEATSTRIP® Classic is simple and easy with the standard mounting brackets. other more challenging locations there are range of mounting options available - refer to below diagrams.

The HEATSTRIP® Classic can be mounted directly to the ceiling, angled downwards on a wall, fitted flush with the ceiling; suspended on chains or poles; attached to beams or poles; mounted end-to-end, or 2 units together. Refer to the following pages for more detailed information on each mounting option.



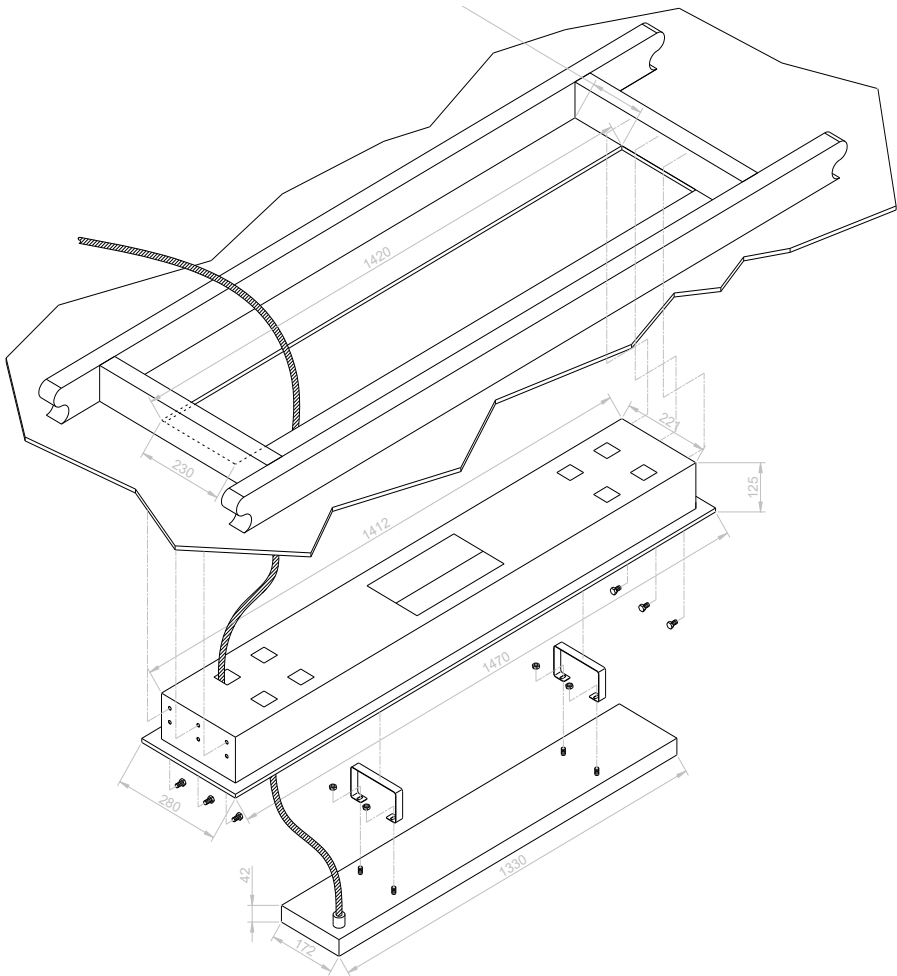
DESCRIPTION

BASIS OF
DESIGN1 -
PREFERRED

The Flush Mount Enclosure is an ideal way to neatly install the HEATSTRIP® into a ceiling. They are for all HEATSTRIP® Classic models, and are supplied as a one-piece unit for mounting of heaters. Flush mounting can be used with plaster or wood lined ceiling materials.

An ideal mounting height is 90" - 105" (2.5m-2.7m), with a maximum ceiling height of 117" (3.0m) in an outdoor enclosed environment. Maximum mounting heights should be strictly followed, otherwise the performance of the units may be reduced.

The facia of the enclosure is manufactured from 316 Stainless Steel and the rear casing is black zinc coated steel. Please refer to the Installation Manual for more detailed installation information.



SUITABLE FOR MODELS	PART No	HOLE CUTOUT DIMENSIONS (inches)	OVERALL DIMENSIONS (inches)	WEIGHT (lbs)
THH1500A	THHAC-009	38.5" x 9" (980 x 230mm)	40.3" x 11" x 4.9" 1030 x 280 x 125	12 (5.5kg)
THH2400A	THHAC-011	55.5" x 9" (1420 x 230mm)	57.5" x 11" x 4.9" (1470 x 280 x 125mm)	18 (8kg)
THH3200A	THHAC-012	72.5" x 9" (1830 x 230mm)	73.6" x 11" x 4.9" (1880 x 280 x 125mm)	22 (10kg)

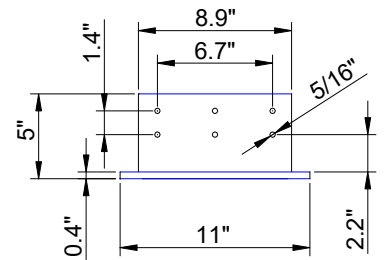
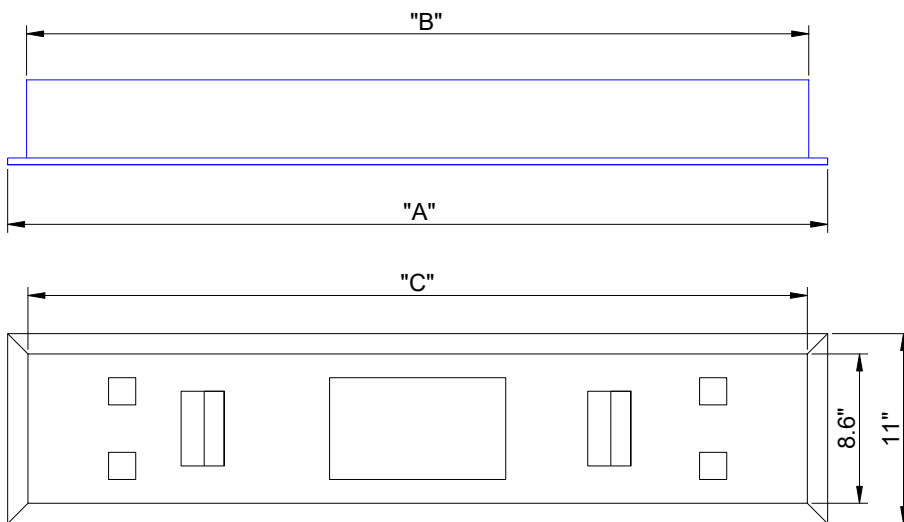
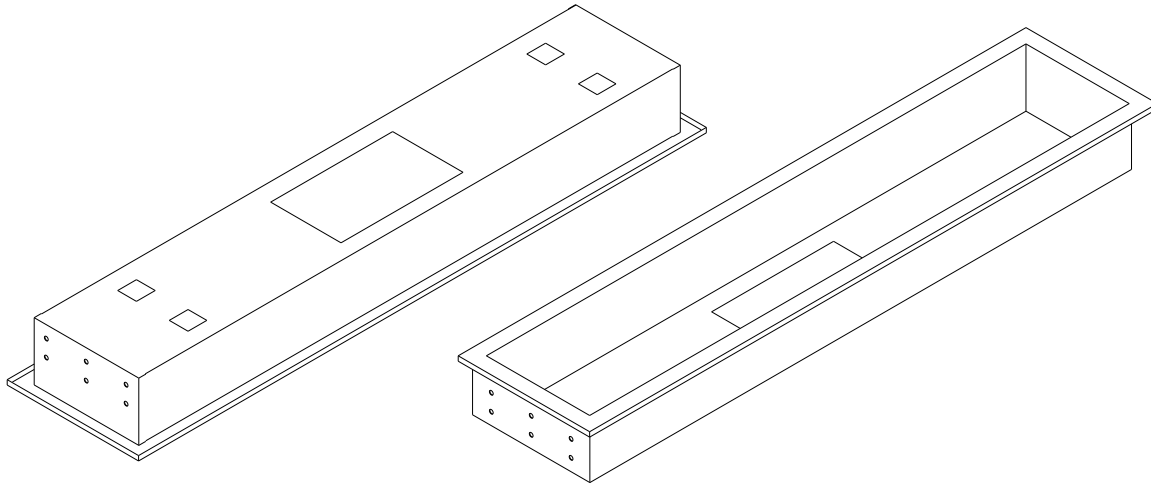


FME DIMENSIONS

BASIS OF
DESIGN1 -
PREFERRED

VIEW FROM TOP

VIEW FROM UNDERNEATH

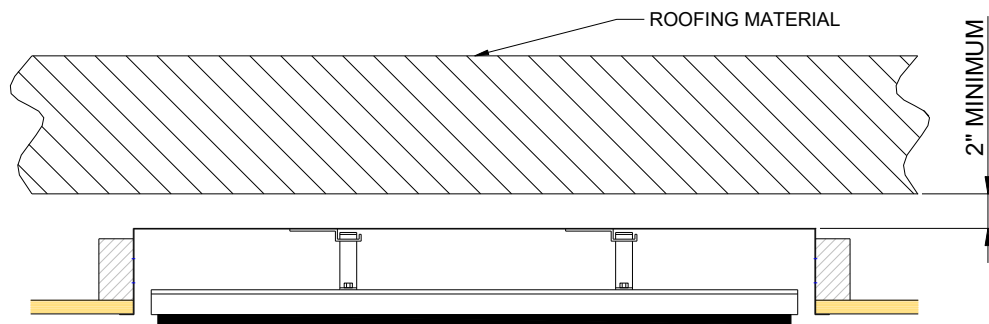


PART No	MODEL	"A" (inches)	"B" (inches)	"C" (inches)
THHAC-009	THH1500A	40.5" (1030mm)	38.3" (974mm)	38.2" (970mm)
THHAC-011	THH2400A	57.9" (1470mm)	55.6" (1414mm)	55.5" (1410mm)
THHAC-012	THH3200A	74" (1880mm)	71.8" (1824mm)	71.6" (1820mm)

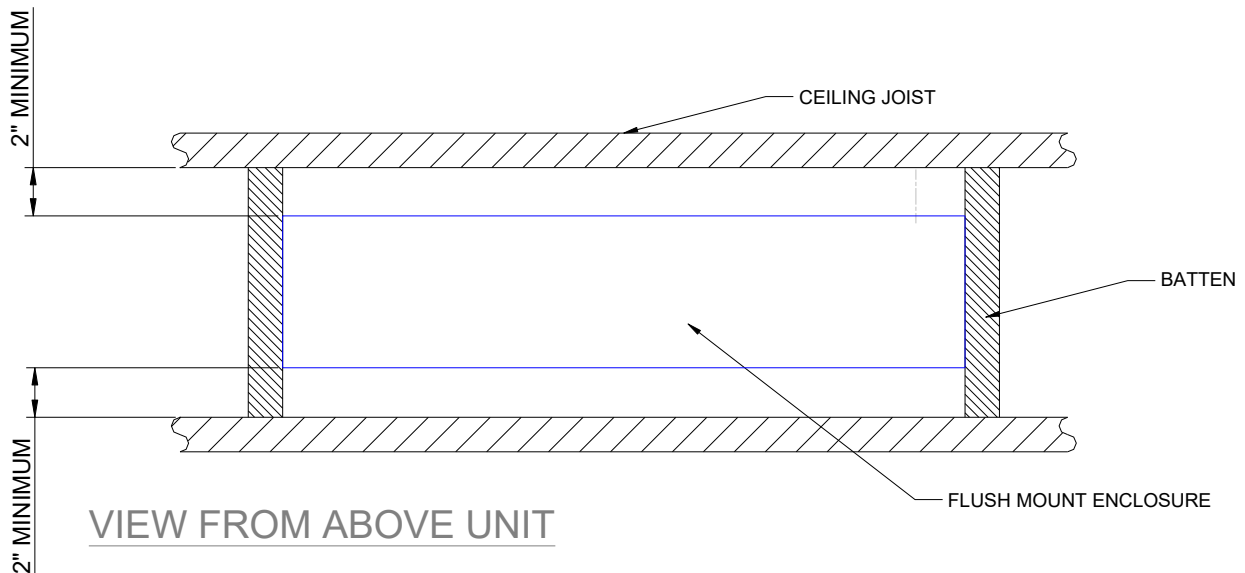
INSTALLATION CLEARANCE DIMENSIONS

Shown in the diagrams below are the minimum clearance required for the installation of the Flush Mount Enclosure.

It is imperative that all cables, backing materials, insulation and other materials are keep clear of the back and the sides of the Flush Mount Enclosure.

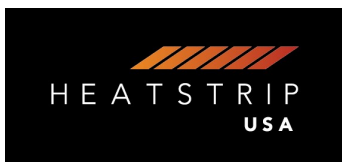


VIEW FROM SIDE



VIEW FROM ABOVE UNIT

CLEARANCE DIMENSIONS



INSTALLATION INSTRUCTIONS

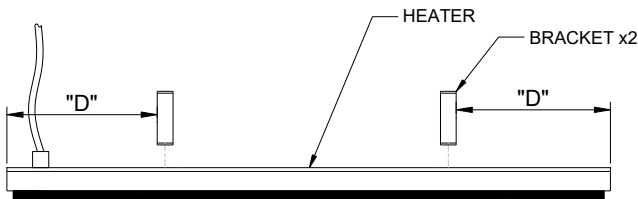
Ensure all minimum clearance requirements are met and the materials used are compliant to your local building codes.

Before installing the FME, ensure the site to be fixed is fully prepared with the hole cut the correct size and the mounting points securely in place.

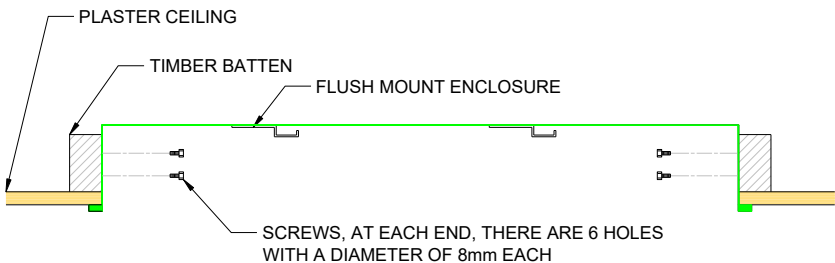
MODEL	DISTANCE TO BRACKET
THH1500A	6" (150mm)
THH2400A	14.5" (370mm)
THH3200A	16.5" (425mm)

BASIS OF DESIGN1 - PREFERRED

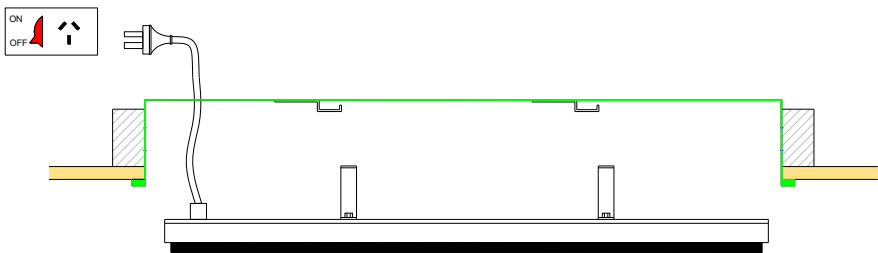
STEP 1: Attach the brackets to the rear of the heater. The dimensions for the spacing of the brackets is listed in the table.



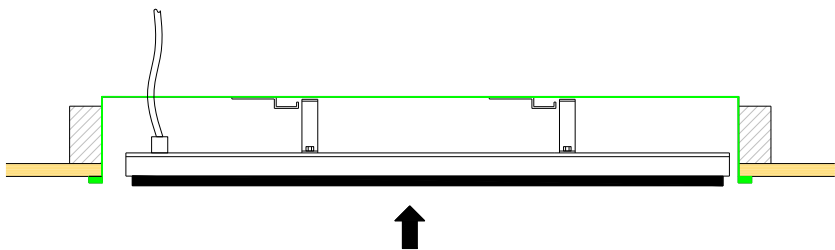
STEP 2: Screw the FME into the battens. NOTE: screws are not included.



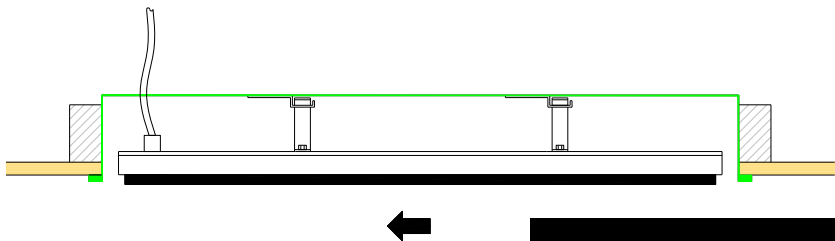
STEP 3: If there is no roof access, connect the heater to the power source, ensure the power is OFF.



STEP 4: Lift the heater into the FME ensuring the brackets are to the side of the mounts



STEP 5: Push the heater to the left ensuring the brackets engage in the mounts. It will then drop in. Shake the heater to ensure that it is securely mounted.



SAFETY



In operation, this heater is VERY HOT— do not touch any part of the heater while it is turned on. Do not touch any part until 30 minutes after it is turned off.

This appliance is not intended for use by persons (including children) with reduced physical, sensory or intellectual capabilities, or lack of experience and knowledge, unless they have been given supervision or instruction concerning use of the appliance by a person responsible for their safety. Children should be supervised to ensure they do not play with the appliance.

Do not allow any cables, furnishings, flammable materials or other items come in contact with any surface of the Flush Mount Enclosure.

If installed in wet areas, the heater switches or controls must be located so that they cannot be touched by persons in the bath or shower.

The Flush Mount Enclosure needs to be installed as per the installation instructions paying special attention to the minimum clearances. The heater needs to be mounted on a rigid bracket or fixing.

See the heater Operations, Installation and Maintenance Manual for the heater specific guidelines.

MAINTENANCE

The Flush Mount Enclosure is made from durable materials, however regular care and maintenance of your product will help prolong its life.

It is recommended that you wipe down your Flush Mount Enclosure and with a soft cloth gently wipe the surfaces of the FME with a mild detergent to remove the built up contaminants from the environment. Then with a clean cloth ensure all detergent is removed.

All chemicals in the atmosphere including cigarette smoke, pollution etc. will tarnish the surface of the Flush Mount Enclosure. In this case, additional cleaning and maintenance may be required. The cleaning process at least every three months will reduce the amount of build up and keep it looking as best it can. If the Flush Mount Enclosure is in a corrosive environment eg. salt spray, we recommend that you clean the FME every week.

Before cleanings or inspection activity, the heater must be switched off and cooled down completely. Do not use any abrasive materials or products to clean the Flush Mount Enclosure, this includes solvents, citrus based cleaners or other harsh cleaning products.

When handling the Flush Mount Enclosure, ensure that your hands are clean or that you use clean gloves as grease or dirt can mark the surface of the heater.

Do not use high pressure water to clean Flush Mount Enclosure. It is not recommended to hose down the FME and heater as water may get into the roof cavity.



Warranty Terms & Conditions

**BASIS OF
DESIGN1 -
PREFERRED**

The below Warranty Terms and Conditions apply for **North American Customers**.

Heatstrip USA warrants to the original owner that HEATSTRIP® Classic products will be free from defects in materials and workmanship for a period of 12 months from the date of purchase in accordance with the following warranty terms and conditions.

Provision of this warranty is subject to:

- The HEATSTRIP® product must be installed in accordance with the Installation Instructions and relevant electrical standards and codes.
- The HEATSTRIP® product must be maintained and cleaned according to instructions detailed in the Installation Manual.
- There is no warranty expressed or implied with regard to capacity requirements. The selection of the unit or units depends entirely upon the system design and capacities as determined by the purchaser.
- The customer has not repaired, opened or altered the product in any unauthorised manner.
- This warranty excludes damage to the product or components arising from circumstances outside the control of Heatstrip USA, including, but not limited to, where the product is not used for intended purpose; where the product has been rectified in any way; incorrect installation; incorrect power supply; damaged caused during delivery; misapplication, misuse, abuse, vandalism, lack of maintenance or accident.
- Heatstrip USA's obligations under this warranty are limited to repair or replacement at Heatstrip USA's factory of any components of the product which Heatstrip USA identifies to its satisfaction to be defective.
- Transportation charges involved in return of the product to the Heatstrip USA factory (or any other location authorised in writing by Heatstrip USA) is the sole responsibility of the customer.
- All products are inspected and tested before despatch and are at the risk of the purchaser after the shipment from the Heatstrip USA factory, if not delivered by Heatstrip USA to destination.
- No products or components will be supplied in advance of an examination of the faulty product or components by Heatstrip USA or an authorized representative of Heatstrip USA.
- Heatstrip USA does not participate in any site related costs or labour expenses incidental to replacement of parts, repairing, removing, installing, servicing, transportation or handling of parts to complete products, and assumes no liability on parts repaired or replaced without written authorisation. Heatstrip USA shall not be liable for any default or delay in performance of its warranty obligations caused by any circumstances beyond its control, including, but not limited to, judicial or government restrictions, strikes, fires, floods, abnormal weather conditions, delayed supply of components.

Should products be determined as damaged on arrival, immediately notify the transport company of the condition and have them noted on the freight documents. If damage is discovered after unpacking, demand immediate inspection by the transportation company and insist that a record of the damage is made on the freight documentation.

The customer warrants using the product in accordance with:

- Any instructions provided to it by Heatstrip USA from time to time.
- All government and local regulations, including but not limited to all relevant electrical, environmental laws and regulations governing the installation, storage, use, handling and maintenance of the goods.
- All necessary and appropriate precautions and safety measures relating to the installation, storage, use, handling and maintenance of goods.

All warranty requests for repairs or replacements must be accompanied by a complete "Warranty Claim Form" available from Heatstrip USA, together with proof of purchase (and where possible, photos of the installation) and the heater returned to the place of purchase.

In the event of a warranty claim, the goods need to be returned to the distributor/retailer for repair/replacement.

DISTRIBUTOR

Heatstrip USA

4275 Executive Square #200
La Jolla, CA 92037 USA
www.heatstripusa.com
info@heatstripusa.com

616 Corporate Way
Suite 2-5771, Valley Cottage
NY 10989 USA
1-877-222-0063

MANUFACTURER

Thermofilm

17 Johnston Court,
Dandenong South, Australia



Legislation Text

File #: 18-0300, **Version:** 1

ITEM TITLE:

Approval of Reimbursement to David Lawrence for Plumbing Fixtures in the Amount of \$297.99.

SUBMITTED BY: Requested by Council member Shirrell and Council Member Fleming.

FISCAL NOTES:

Expenditure Required: \$297.99

Unencumbered Balance: [Click here to enter text.](#)

Funding Source: TBD

RECOMMENDATION:

[Click here to enter text.](#)

SUMMARY STATEMENT:

Mr. Lawrence appeared before the city council under public business from the floor asking for reimbursement of plumbing fixtures. The city manager previously authorized reimbursement of expenses paid to Paul's Boiler and Heating by Mr. Lawrence in the amount of \$150.00 for diagnostic services related to low water pressure.

A letter from Mr. Lawrence requesting reimbursement is attached.

David Lawrence
P. O. Box 1
Valdez, Alaska 99686

Received
JUL 25 2018
City of Valdez

Mr. Comstock

This is a follow-up of our conversation a few weeks ago concerning the water pipe that goes to my curb stop severely leaking.

Sometime last summer I was experiencing low water pressure, but it did not seem real bad, so I didn't think much about it.

In November when we got back from vacation the water pressure was worse, and I assumed it was a bad kitchen faucet. I purchased and installed a new one in December but that didn't fix the problem.

We left for vacation January 2nd and didn't return to Valdez until February 10th and the pressure had worsened.

Around February 20th I needed to go to the crawl space because my air handler was making a bad noise. While down there I heard water running. I spent several hours inspecting the entire water system that I could view and found no leaks. I even shut the two valves off located at the pressure reducing valve, but I could still hear it running.

I started my search for a plumber at that time.

In March my shower had little more than a trickle so I purchased and installed a shower head, but it did not solve the problem so I wasn't sure what to do next.

In May I purchased a pressure reducing valve thinking that might have been the problem, but never installed it.

Finally on June 11th I got Paul's Boiler and Heating to come over and look at it. He tested the water pressure in the garage and at the pressure reducing valve and it read 19 and 20 PSI respectively.

Mr. Ezell called Mr. Koch who came over and shut the curb stop off and we could still hear the water running confirming the problem was on the city side.

Come to find out the city was aware of the leak back in the fall of 2017, but neglected to inform us. When they started the dig I was told then that there was a discussion when they first knew about the leak the comment was made “the Lawrence’s haven’t said anything, so we will let it be”.

I did my due diligence and tried to troubleshoot and fix my side, but had I known there was a problem on the city side I could have avoided all of the time and money spent trying to fix my lack of water pressure.

I am submitting this letter and evidence and seeking reimbursement for the faucet, shower head, and the plumber call-out.

Paul’s Boiler and Heating	\$150.00
Hansgrohe Kitchen Faucet	\$248.00
Oxygenix Shower Head	\$49.99
Total	\$447.99

I wanted a quality faucet, so I found one at Lowe’s original price \$447.00 on sale for \$248.00. The shower head was \$65.99 on sale for \$49.99.

I wanted to follow the proper chain of command, so Mr. Koch said I should start with Mr. Comstock. I spoke to him and explained that I wanted to seek re-imbursement, and followed it up with a written request. He said he would bring it to the City Manager. The following week he was at the dig where they were now searching for a leak for the house across the street from me. He said the City Manager would only pay for the plumber and that if I was not satisfied with this to feel free to talk with the City Manager directly. I thanked him for his part and then called the City Manager. Mrs. Doom called me the next day and we had a conversation regarding my issue and request for re-

imbursement for the entire amount. Mrs. Doom was very polite and professional, but stated that she couldn't cover the costs for the fixtures, just the plumber. I could tell that we had come to an impasse, so thanked her for her part and requested that I come before the council to state my case.

So following the proper chain of command and having not been given a satisfactory resolution I find myself before you.

I am not asking for a huge amount and given what the city had prior knowledge of the leak "even an owner across the street knew about the leak last fall, which she disclosed to us the day they dug the pipe up. She thought we knew about it". I believe reimbursing the full amount would be the right thing to do.

Thank you for your consideration.

Sincerely

A handwritten signature in blue ink, appearing to read "Lawrence", with a long horizontal flourish extending to the right.

David Lawrence

7/25/2018

Note: I want to close by giving a shout out to Mr. Frank, Mr. Koch, and Mr. Comstock and their great crews. They got right on the problem the very next morning and stuck with it until the job was done, which was 9:45 PM.



[Skip to main content](#)

Check Details

Check Number	109
Date Posted	06/12/18
Check Amount	\$150.00

SHARON S LAWRENCE
DAVID LAWRENCE
1129 PTARMIGAN PLACE
PO BOX 1
VALDEZ, AK 99686-0001

109

6/11/18

Date

Pay to the Order of Paul's Boiler & Heating \$ 150.00

ONE Hundred Fifty & 00/100 Dollars

WELLS FARGO
Wells Fargo Bank, N.A.
Alaska
wellsfargo.com

For _____

For your security, information like account numbers, signatures, and the ability to view the backs of checks have been removed from the images.
You can see full or partial fronts and backs of the images by using the link at the top of the window.

Equal Housing Lender

REGISTER ON LOWES FOR PROS AND GET 10% OFF NEXT PURCHASE. REGISTER NOW>

Open until 10PM!
Anchorage Lowe's



Prices, promotions, styles, and availability may vary. Our local stores do not honor online pricing. Prices and availability of products and services are subject to change without notice. Errors will be corrected where discovered, and Lowe's reserves the right to revoke any stated offer and to correct any errors, inaccuracies or omissions including after an order has been submitted.

Item # 1119119 Model # 04506001

Hansgrohe Focus Chrome 1-Handle Pull-down Kitchen Faucet

No Reviews



Have an opinion?
Help others decide.
Write a Review



Max Flow Rate: 1.75 GPM (6.6 LPM)

~~\$447.96~~ 248.00

- MagFit magnetic spray head docking
- Swivel range 150 degrees
- Laminar and needle spray



**Ships to Store
FREE**

✓ Ready for pickup:
Estimated by
07/15/2018



**FREE
Shipping**

✓ Ready for delivery:
Estimated on
07/15/2018

PLUS
**5%
OFF***

EVERY DAY

*when you use your Lowe's Business Credit Card.
Subject to credit approval. Exclusions apply.

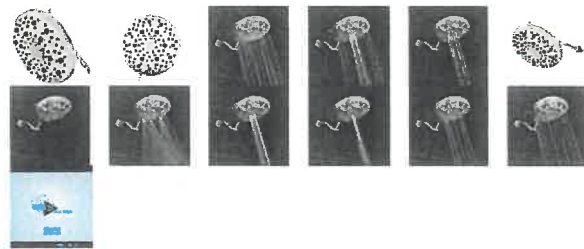
© 2018 Lowe's, LOWE'S and the gable mansard are registered trademarks of LF, LCC. © 2018 American Express. All rights reserved.



Get Details >

Product Information

BED BATH & BEYOND



Clearance!

Oxygenics® Vortex Showerhead in Brushed Nickel

- 10" face for complete coverage
- Features 6 Oxygenics engines to improve power, feel and pressure
- 8 unique spray settings
- Can adjust for a person of any height with its 9" adjustable brass extension arm
- Measures 10" W x 4 1/2" D x 10" L
- Showerhead flow rate is 2.0 GPM (9.463529 L/Min.)
- Installs in minutes with included plumber's tape
- Limited lifetime manufacturer's warranty

SKU # 17734156

[View Buying Guide](#) [Shipping Restrictions Details](#)

\$49.99

Was \$69.99

Free Shipping on Orders Over \$29

Price for BEYOND+ Members [Join Now!](#)

\$39.99

Standard Shipping ⓘ

Usually ships in 24 Hours

In-Store Pickup

We cannot find any store near your location. Please increase search radius and try again.

[Find Stores](#)

Shopper Sentiments ⓘ

89% POSITIVE OPINIONS
out of 46

General

Installation

Settings

Water Pressure

Value

Looks

Price

Feature

[Suggest Improvements](#)

21 out of 24 general comments about the product were positive



" Love it"

Apr 23, 2018 | 2 shoppers made a similar statement

" Junk after 1 year - buyer beware"

Mar 26, 2018



" OMG, great shower head, after every shower, my husband says, 'wow, great shower' great purchase. We both are so pleased and surprised."

Dec 29, 2017



" Superb for its price"

Nov 25, 2017



" Just awesome!"

Apr 11, 2016



" Love it's enormous size and the 8 spray settings"

Mar 03, 2016

[VIEW MORE](#)

You May Also Like...

CUSTOM ALSO



Oxygeni Curve™ Shower Chrome
\$59.99



Waxmar SimplyC Filtration Replace Filter
\$9.99



Sprite® Bath Fill Chrome
\$24.99



Riedel® Heart C Sauvign Glasses 4 Value
4 Piece





City of Valdez

212 Chenega Ave.
Valdez, AK 99686

Legislation Text

File #: 18-0301, **Version:** 1

ITEM TITLE:

Legal Billing - July 2018

SUBMITTED BY: Sheri Pierce, City Clerk

FISCAL NOTES:

Expenditure Required: [Click here to enter text.](#)

Unencumbered Balance: [Click here to enter text.](#)

Funding Source: [Click here to enter text.](#)

RECOMMENDATION:

[Click here to enter text.](#)

SUMMARY STATEMENT:

Please see attached legal billing report for July 2018.

BRENA, BELL & CLARKSON, P.C.

ROBIN O. BRENA, MANAGING ATTORNEY
 JESSE C. BELL
 KEVIN G. CLARKSON
 DAVID W. WENSEL
 ANTHONY S. GUERRIERO
 LAURA S. GOULD
 FREDERICK H. HAHN V
 KELLY M. MOGHADAM
 JON S. WAKELAND
 JAKE W. STASER

ATTORNEYS AT LAW

810 N STREET, SUITE 100
 ANCHORAGE, ALASKA 99501
 TELEPHONE: (907) 258-2000
 FACSIMILE: (907) 258-2001
 WEB SITE: BRENALAW.COM

August 15, 2018

City of Valdez
 Attn: Elke Doom, City Manager
 P.O. Box 307
 Valdez, AK 99686

Elke Doom

July 2018 Billing Summary Sheet

File No.	Description	\$	Amount
1374-003	Tax Cap Matters	\$	10,085.00
1374-007	City Council	\$	12,879.19
1374-008	Capital Facilities	\$	720.00
1374-009	Ports and Harbor	\$	420.00
1374-010	Finance	\$	998.70
1374-011	Administration	\$	16,412.41
1374-012	Community Development	\$	5447.36
1374-014	Escaped Property	\$	6911.61
1374-015	Bond Sales & Defeasance	\$	0
1374-016	Parks & Rec	\$	270.00
1374-017	Police Department	\$	2253.74
1374-018	Human Resources – CONFIDENTIAL	\$	1774.71
1374-019	Public Works	\$	0
1374-020	Small Boat Harbor	\$	0
1374-022	Gas Line	\$	7083.95
1374-023	Confidential H.R. Matter	\$	32,714.84
1374-025	Confidential H.R. Matter	\$	0
1374-026	DOR Regulation Scoping and Revision Process	\$	0
1374-027	Cummings	\$	9733.06
1374-028	Confidential H.R. Matter	\$	0
1374-030	Appeal of Approval of Alyeska Spill Plan/C-Plan	\$	36,328.55
1374-031	IT Matter	\$	330.00
1374-032	Economic Development	\$	350.26
1374-033	Fire Department	\$	0
1374-034	Barton	\$	13,759.81
	TOTAL	\$	158,473.19