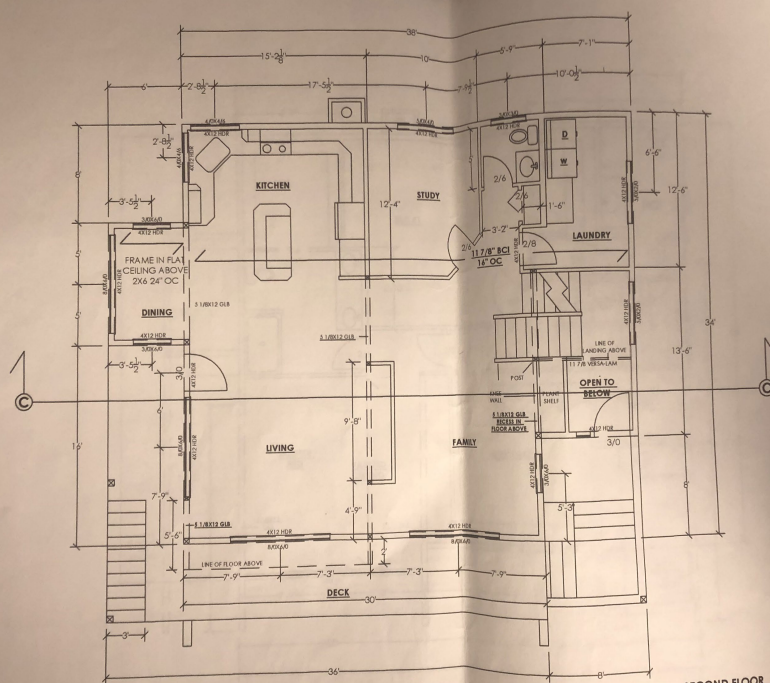


[illegible]

NOTE:
5/8 IN ANCHOR BOLTS @
48IN OC UNLESS
OTHERWISE NOTED IN
ENGINEERING

WOLF POINT
CONSTRUCTION
BOX 377
COPPER CENTER, AZ
99573

CHRYSTAL/GILLES
RESIDENCE
LOT 8 - BLOCK 1
CORBIN CREEK
SUBDIVISION



SECOND FLOOR
 $3/16" = 1'$
 1239 SQ FT THIS FLOOR
 2523 SQ FT TOTAL

GENERAL NOTES

ALL DESIGN, DESIGNS, ARRANGEMENTS, DRAWINGS AND PLANS SET FORTH ON THIS SHEET ARE THE PROPERTY OF WOOLF POINT CONSTRUCTION. ANY USE OR DISCLOSURE OF SAID PLAN, OTHER THAN BY WOOLF POINT CONSTRUCTION IS STRICTLY PROHIBITED.

ALL WORK INCLUDING PLUMBING, WIRING & STRUCTURAL SHALL CONFORM TO THE LATEST ADOPTED EDITIONS OF THE UNIFORM PLUMBING, MECHANICAL, BUILDING CODE & ALL LOCAL ORDINANCES.

ALL WORK INCLUDING PLUMBING,
WIRING & STRUCTURAL SHALL
CONFORM TO THE LATEST ADOPTED
EDITIONS OF THE UNIFORM PLUMBING,
MECHANICAL, BUILDING CODE & ALL
LOCAL ORDINANCES.

FLOOR DIAPHRAGM-USE 3/4"X8" OSB W/ 8D @ 8" OC AT SUPPORTED EDGES & 4" ON BOUNDARIES. NAILS MUST PROVIDE MIN 1.5B" PENETRATION INTO BEAMING.

ROOF DIAPHRAGM-USE 1/4" GA STEEL @ 8" OC ON BOUNDARIES & 8" OC OTHER

TRUSS DESIGN-DESIGN TRUSS WITH 14" KEEI HEIGHT AND 120 PSF LOAD.

WRITTEN DIMENSIONS SHALL TAKE
PRECEDENCE OVER SCALED
DIMENSIONS.

SOIL BEARING PRESSURE ASSUMED AT
2300 PSF.

MAX. SILL HEIGHT OF EGRESS WINDOW
TO BE 44" ABOVE FINISH FLOOR, MIN. NET
OPENABLE AREA TO BE 5.7 SF.

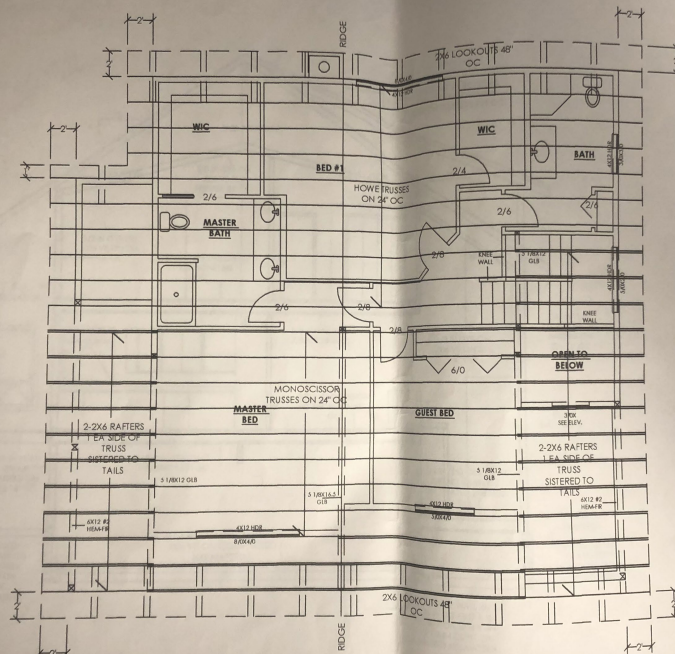
USE DOUBLE CRIPPLERS UNDER HEADERS
OVER 6' LONG.

INSTALL BOYS FLOOR JOISTS PER
MANUFACTURERS SPECIFICATIONS

11

WOLF POINT

CONSTRUCTION
BOX 377
COPPER CENTER
99573



ROOF PLAN
3/16" = 1'

GENERAL NOTES

ALL DECKS, DRINKING, AND ARRANGEMENTS, DRAWINGS AND PLANS SET FORTH ON THIS SHEET ARE THE PROPERTY OF WOLF POINT CONSTRUCTION, AND ARE NOT TO BE REPRODUCED OR USED FOR ANY OTHER PURPOSE WITHOUT THE WRITTEN CONSENT OF WOLF POINT CONSTRUCTION. IT IS EXPRESSLY PROHIBITED.

ALL WORK INCLUDING PLUMBING, HEATING & AIR CONDITIONING SHALL CONFORM TO THE LATEST ADOPTED EDITIONS OF THE INTERNATIONAL MECHANICAL, ELECTRICAL CODE & ALL LOCAL ORDINANCES.

FLOOR DRAINAGE USE 3/4" TRIP COB BY 3/4" IF 1/2" AT SLOTTED DRAINAGE & 1/2" FOR BOUNDARIES. WALLS MUST PROVIDE 1/2" SLOPE DRAINAGE INTO DRAINAGE.

ROOF DRAINAGE USE 1/2" DIA. SLOTTED 1/2" DIA. BOUNDARIES & 1/2" DIA. OTHER PANEL DRAIN. DRAINAGE MANUFACTURER'S NUMBER AT 1/2" DIA.

WATER DRAINAGE DRAINAGE WITH 1/2" DIA. DRAINAGE AND 1/2" DIA. DRAINAGE. DRAINAGE MUST BE 1/2" DIA.

WATER DRAINAGE DRAINAGE WITH 1/2" DIA. DRAINAGE AND 1/2" DIA. DRAINAGE. DRAINAGE MUST BE 1/2" DIA.

WATER DRAINAGE DRAINAGE WITH 1/2" DIA. DRAINAGE AND 1/2" DIA. DRAINAGE. DRAINAGE MUST BE 1/2" DIA.

WATER DRAINAGE DRAINAGE WITH 1/2" DIA. DRAINAGE AND 1/2" DIA. DRAINAGE. DRAINAGE MUST BE 1/2" DIA.

WATER DRAINAGE DRAINAGE WITH 1/2" DIA. DRAINAGE AND 1/2" DIA. DRAINAGE. DRAINAGE MUST BE 1/2" DIA.

WATER DRAINAGE DRAINAGE WITH 1/2" DIA. DRAINAGE AND 1/2" DIA. DRAINAGE. DRAINAGE MUST BE 1/2" DIA.

WATER DRAINAGE DRAINAGE WITH 1/2" DIA. DRAINAGE AND 1/2" DIA. DRAINAGE. DRAINAGE MUST BE 1/2" DIA.

WATER DRAINAGE DRAINAGE WITH 1/2" DIA. DRAINAGE AND 1/2" DIA. DRAINAGE. DRAINAGE MUST BE 1/2" DIA.

WATER DRAINAGE DRAINAGE WITH 1/2" DIA. DRAINAGE AND 1/2" DIA. DRAINAGE. DRAINAGE MUST BE 1/2" DIA.

WATER DRAINAGE DRAINAGE WITH 1/2" DIA. DRAINAGE AND 1/2" DIA. DRAINAGE. DRAINAGE MUST BE 1/2" DIA.

WATER DRAINAGE DRAINAGE WITH 1/2" DIA. DRAINAGE AND 1/2" DIA. DRAINAGE. DRAINAGE MUST BE 1/2" DIA.

WATER DRAINAGE DRAINAGE WITH 1/2" DIA. DRAINAGE AND 1/2" DIA. DRAINAGE. DRAINAGE MUST BE 1/2" DIA.

WATER DRAINAGE DRAINAGE WITH 1/2" DIA. DRAINAGE AND 1/2" DIA. DRAINAGE. DRAINAGE MUST BE 1/2" DIA.

WATER DRAINAGE DRAINAGE WITH 1/2" DIA. DRAINAGE AND 1/2" DIA. DRAINAGE. DRAINAGE MUST BE 1/2" DIA.

WATER DRAINAGE DRAINAGE WITH 1/2" DIA. DRAINAGE AND 1/2" DIA. DRAINAGE. DRAINAGE MUST BE 1/2" DIA.

WATER DRAINAGE DRAINAGE WITH 1/2" DIA. DRAINAGE AND 1/2" DIA. DRAINAGE. DRAINAGE MUST BE 1/2" DIA.

WATER DRAINAGE DRAINAGE WITH 1/2" DIA. DRAINAGE AND 1/2" DIA. DRAINAGE. DRAINAGE MUST BE 1/2" DIA.

WATER DRAINAGE DRAINAGE WITH 1/2" DIA. DRAINAGE AND 1/2" DIA. DRAINAGE. DRAINAGE MUST BE 1/2" DIA.

WATER DRAINAGE DRAINAGE WITH 1/2" DIA. DRAINAGE AND 1/2" DIA. DRAINAGE. DRAINAGE MUST BE 1/2" DIA.

WATER DRAINAGE DRAINAGE WITH 1/2" DIA. DRAINAGE AND 1/2" DIA. DRAINAGE. DRAINAGE MUST BE 1/2" DIA.

WATER DRAINAGE DRAINAGE WITH 1/2" DIA. DRAINAGE AND 1/2" DIA. DRAINAGE. DRAINAGE MUST BE 1/2" DIA.

WATER DRAINAGE DRAINAGE WITH 1/2" DIA. DRAINAGE AND 1/2" DIA. DRAINAGE. DRAINAGE MUST BE 1/2" DIA.

WATER DRAINAGE DRAINAGE WITH 1/2" DIA. DRAINAGE AND 1/2" DIA. DRAINAGE. DRAINAGE MUST BE 1/2" DIA.

WATER DRAINAGE DRAINAGE WITH 1/2" DIA. DRAINAGE AND 1/2" DIA. DRAINAGE. DRAINAGE MUST BE 1/2" DIA.

WATER DRAINAGE DRAINAGE WITH 1/2" DIA. DRAINAGE AND 1/2" DIA. DRAINAGE. DRAINAGE MUST BE 1/2" DIA.

WATER DRAINAGE DRAINAGE WITH 1/2" DIA. DRAINAGE AND 1/2" DIA. DRAINAGE. DRAINAGE MUST BE 1/2" DIA.

WATER DRAINAGE DRAINAGE WITH 1/2" DIA. DRAINAGE AND 1/2" DIA. DRAINAGE. DRAINAGE MUST BE 1/2" DIA.

WATER DRAINAGE DRAINAGE WITH 1/2" DIA. DRAINAGE AND 1/2" DIA. DRAINAGE. DRAINAGE MUST BE 1/2" DIA.

WATER DRAINAGE DRAINAGE WITH 1/2" DIA. DRAINAGE AND 1/2" DIA. DRAINAGE. DRAINAGE MUST BE 1/2" DIA.

WATER DRAINAGE DRAINAGE WITH 1/2" DIA. DRAINAGE AND 1/2" DIA. DRAINAGE. DRAINAGE MUST BE 1/2" DIA.

WATER DRAINAGE DRAINAGE WITH 1/2" DIA. DRAINAGE AND 1/2" DIA. DRAINAGE. DRAINAGE MUST BE 1/2" DIA.

WATER DRAINAGE DRAINAGE WITH 1/2" DIA. DRAINAGE AND 1/2" DIA. DRAINAGE. DRAINAGE MUST BE 1/2" DIA.

WATER DRAINAGE DRAINAGE WITH 1/2" DIA. DRAINAGE AND 1/2" DIA. DRAINAGE. DRAINAGE MUST BE 1/2" DIA.

WATER DRAINAGE DRAINAGE WITH 1/2" DIA. DRAINAGE AND 1/2" DIA. DRAINAGE. DRAINAGE MUST BE 1/2" DIA.

WATER DRAINAGE DRAINAGE WITH 1/2" DIA. DRAINAGE AND 1/2" DIA. DRAINAGE. DRAINAGE MUST BE 1/2" DIA.

WATER DRAINAGE DRAINAGE WITH 1/2" DIA. DRAINAGE AND 1/2" DIA. DRAINAGE. DRAINAGE MUST BE 1/2" DIA.

WATER DRAINAGE DRAINAGE WITH 1/2" DIA. DRAINAGE AND 1/2" DIA. DRAINAGE. DRAINAGE MUST BE 1/2" DIA.

WATER DRAINAGE DRAINAGE WITH 1/2" DIA. DRAINAGE AND 1/2" DIA. DRAINAGE. DRAINAGE MUST BE 1/2" DIA.

WATER DRAINAGE DRAINAGE WITH 1/2" DIA. DRAINAGE AND 1/2" DIA. DRAINAGE. DRAINAGE MUST BE 1/2" DIA.

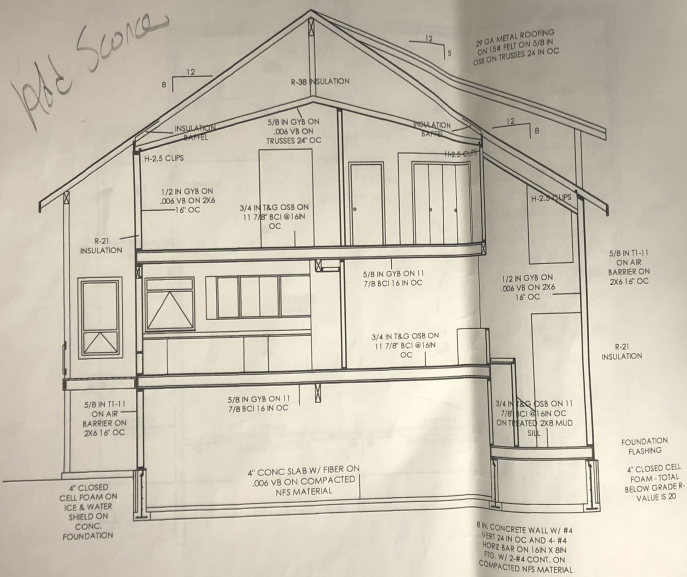
WATER DRAINAGE DRAINAGE WITH 1/2" DIA. DRAINAGE AND 1/2" DIA. DRAINAGE. DRAINAGE MUST BE 1/2" DIA.

WATER DRAINAGE DRAINAGE WITH 1/2" DIA. DRAINAGE AND 1/2" DIA. DRAINAGE. DRAINAGE MUST BE 1/2" DIA.

WATER DRAINAGE DRAINAGE WITH 1/2" DIA. DRAINAGE AND 1/2" DIA. DRAINAGE. DRAINAGE MUST BE 1/2" DIA.

WATER DRAINAGE DRAINAGE WITH 1/2" DIA. DRAINAGE AND 1/2" DIA. DRAINAGE. DRAINAGE MUST BE 1/2" DIA.

WATER DRAINAGE DRAINAGE WITH 1/2" DIA. DRAINAGE AND 1/2" DIA. DRAINAGE. DRAINAGE MUST BE 1/2" DIA.



GENERAL NOTES

ALL DECK, PORCH, TERRACE, AND BALCONY
CONSTRUCTION SHALL BE IN ACCORDANCE WITH THE
LATEST EDITIONS OF THE INTERNATIONAL BUILDING
CODES (IBC), IRC, AND ALL LOCAL ORDINANCES.
FLOOR JOISTS SHALL BE 2X8 OR 2X10 ON 16" OC
AT SUPPORTED ENDS & 4" ON END JOISTS. WALLS
AND FLOORS SHALL BE 1/2" MINIMUM THICKNESS
UNLESS OTHERWISE NOTED.
ROOF JOISTS SHALL BE 2X8 OR 2X10 ON 16" OC
AT SUPPORTED ENDS & 4" ON END JOISTS. OTHER
FLOOR JOISTS SHALL BE 2X8 OR 2X10 ON 16" OC
UNLESS OTHERWISE NOTED.
FLOOR JOISTS SHALL BE 2X8 OR 2X10 ON 16" OC
AT SUPPORTED ENDS & 4" ON END JOISTS. OTHER
FLOOR JOISTS SHALL BE 2X8 OR 2X10 ON 16" OC
UNLESS OTHERWISE NOTED.
FLOOR JOISTS SHALL BE 2X8 OR 2X10 ON 16" OC
AT SUPPORTED ENDS & 4" ON END JOISTS. OTHER
FLOOR JOISTS SHALL BE 2X8 OR 2X10 ON 16" OC
UNLESS OTHERWISE NOTED.

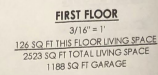
WOLF POINT
CONSTRUCTION
BOX 377
COPPER CENTER, AK
99573

CRYSTAL GILLESPIE
RESIDENCE
LOT 8 - BLOCK 13
COPPER CREEK
SUBDIVISION

SHEET
7 OF 10

SECTIONS

SECTION C
SCALE: 3/16" = 1'



GENERAL NOTES
ALL IDEAS, DESIGNS, ARRANGEMENTS,
DRAWINGS AND PLANS SET FORTH ON
THIS SHEET ARE THE PROPERTY OF WOLF
POINT CONSTRUCTION. ANY USE, REUSE
OR DISCLOSURE OF SAID PLANS, OTHER
THAN BY WOLF POINT CONSTRUCTION IS
STRICTLY PROHIBITED.

ALL WORK INCLUDING PLUMBING
WIRING & STRUCTURAL SHALL
CONFORM TO THE LATEST ADOPTED
EDITIONS OF THE UNIFORM PLUMBING
MECHANICAL BUILDING CODE & ALL
LOCAL ORDINANCES.

FLOOR DIAPHRAGM: USE 3/4" T&G OSB
Sd @ 4" OC AT SUPPORTED EDGES &
ON BOUNDARIES. NAILS MUST PROVIDE
MIN 1 5/8" PENETRATION INTO FRAMING.

ROOF DIAPHRAGM: USE 16 GA STAPLES
@ 4" OC ON BOUNDARIES & 4" OC OTHER
PANEL EDGES. STAPLE INTERMEDIATE
MEMBERS AT 12" OC.

TRUSS DESIGN- DESIGN TRUSSES WITH 14"
HEEL HEIGHT AND 120 PSF LOAD.
SHEAR WALL- STAPLING SPEC IS EDGE
STAPLING. FIELD TO BE PER UBC.
WRITTEN DIMENSIONS SHALL TAKE
PRECEDENCE OVER SCALED
DIMENSIONS.

SOE BEARING PRESSURE ASSUMED AT
2300 PSF.

MAX SILL HEIGHT OF EGRESS WINDOWS
TO BE 44" ABOVE FINISH FLOOR. MIN NET
OPENABLE AREA TO BE 5.7 SF.

USE DOUBLE CRIPPLES UNDER HEADERS
OVER 6' LONG.

INSTALL SCOTCH FLOOR JOISTS PER
MANUFACTURER'S SPECIFICATIONS.

U

WOLF POINT
CONSTRUCTION
BOX 377

BOX 377
COPPER CENTER, AK
99573



SHEET
9 OF 10
ELECTICAL

