



TUESDAY, MARCH 9TH

**MEALS HILL MASTER PLAN
PARKS AND RECREATION COMMISSION WORK SESSION
VIRTUAL & IN-PERSON AT COUNCIL CHAMBERS
6:00 PM – 7:00 PM**

ZOOM LINK

Join Zoom Meeting

<https://us02web.zoom.us/j/85668995027?pwd=dkdOaUY5V2pDTTFDNnVsVWtmZDdTZz09>

Meeting ID: 856 6899 5027

Passcode: 061808

Call-in: +1 253 215 8782 US

MEETING OUTLINE

1. *Review Public Comment Results*
2. *Discuss Preferred Trail Concept, Related Comments, & Estimates*
3. *Discuss Preferred Access Concept, Related Comments, & Estimates*
 - a. *Access Concept A - Small Parking Area with Universal Boardwalk*
 - b. *New Concept (Based on Public Feedback) - No Parking and Regrading the Road*
 - c. *New Concept (Based on Public Feedback) - No Parking and Elevated Boardwalk Along the South*
4. *Other Design/Management Considerations*
5. *Next Steps*
 - a. *Meeting with the Committee*
 - b. *Final Draft Master Plan Mid-April*

ATTACHEMENTS

- *Public Comment Results Summary*
- *Access Concept A - Small Parking Area with Universal Boardwalk*
- *New Entry Concept (Based on Public Feedback) - No Parking with Accessible Multi-use Trail*
 - *Section*
- *New Entry Concept (Based on Public Feedback) – No Parking and Elevated Boardwalk Along the South*

PRELIMINARY DESIGN - PUBLIC FEEDBACK SUMMARY

INTRODUCTION

Public comments on the preliminary Meals Hill concept design were collected from February 8th through February 19th. During that time 126 individuals provided feedback. This summary presents the results of the public comments. As a reminder, a description of the concepts and a summary of how comments were collected can be found by scrolling to the end of this document.

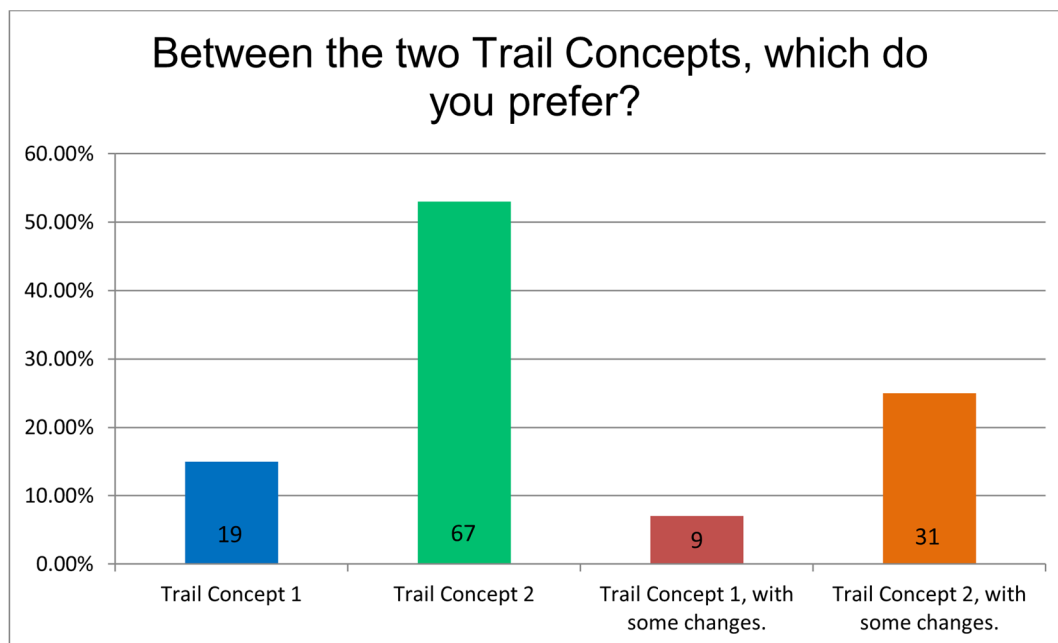
SUMMARY OF PUBLIC INPUT

Responses to Question 1 and 2 were graphed to see the frequency that individuals selected certain options (see graphs below).

Trail Concepts

Most respondents selected Trail Concept 2 as their preferred option. Comment trends and changes people want to see related to Trail Concept 2 include:

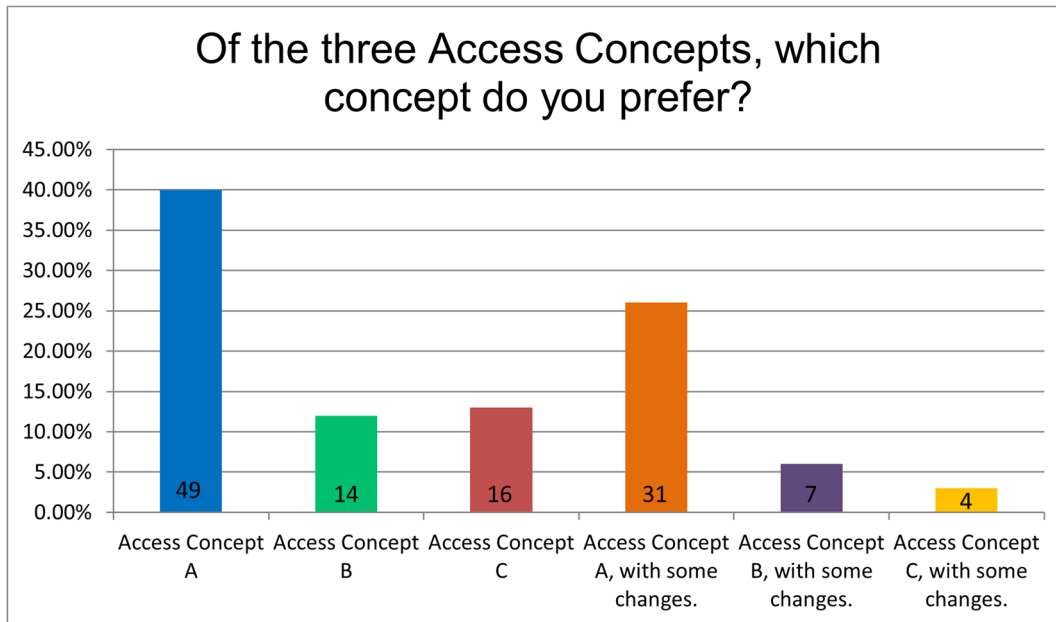
- Positive comment regarding the mountain bike trails, i.e., happy that single track trails are included (23)
- Add more mountain bike trails (10)
- General concern about long-term costs and maintenance (8)
- Add a pump track (6)



Access Concepts

While 49 respondents selected Access Concept A, five of those respondents commented that they would prefer no parking on the hill along with 32 other individuals who made a similar comment, for a total of 37 commenting they would prefer no parking. Comment trends and changes people want to see related to access include:

- No parking (37)
- Parking only for ADA / Drop-off (9)



Next Steps

The planning committee and Parks and Recreation Commission will work with the design team to make decisions on how to adjust the concepts moving forward to the draft master plan. For example, the design team will review the feasibility of options for no parking. Two options are included in this packet for discussion and feedback during the work session.

A Deeper Dive

Comments were reviewed and categorized into design topics. Below are two tables of the comments. The first table has the comment topic organized by number of respondents (highest to lowest) and the second table has the comments organized by category first then by number of respondents.

Table of Comments Categorized by Topics & Quantities

| Comment Topic | Number of Respondents |
|---|------------------------------|
| No Parking | 37 |
| Positive Comment Regarding the Mountain Bike Trails | 23 |
| Preserve Trees/Natural Areas | 12 |
| More Mountain Bike Trails | 10 |
| Parking Only for ADA / Drop-off | 9 |
| Add Parking in the Northwest | 8 |
| Concerned About Costs / Maintenance | 8 |
| Add Pump Track | 6 |
| Additional Amenities | 5 |
| Concerned About Car/Pedestrian Safety | 5 |
| Ensure Emergency Vehicle Access | 5 |
| Keep Gate At Entrance | 5 |
| Keep Trail Uses Segregated / Concern with Bike Impacts and Interactions | 5 |
| No Shelter | 5 |
| Remove Trails Near Eagle's Nest | 4 |
| Add Water Access | 3 |
| Incorporate Historic Information | 3 |
| More Parking | 3 |
| No Restroom | 3 |
| Reduce Biking Trails | 3 |
| Remove Skills Park | 3 |
| Add Bike Connections to the Right-of-Way | 2 |
| Add Dog Clean-up Stations | 2 |
| Add Restroom in the Northwest | 2 |
| Add Upper Trail Loop by Water Tower in Trail Concept 1 | 2 |
| Allow E-Bikes | 2 |
| Change the Name | 2 |
| Create Trail Links with Blueberry Hill | 2 |
| Do Not Show Connections Across UA Lands | 2 |
| Ensure Ski Connections | 2 |
| Move Bike Park Closer to an Entrance | 2 |
| No Platform in the Forest | 2 |
| Phase the Plan | 2 |
| Remove Ocean Bluff Trail | 2 |
| Add "Boundary Trail" | 1 |
| Add Connections to ROW | 1 |
| Add Ski Trails | 1 |
| Add Upper Bike Trails from Trail Concept 2 to Trail Concept 1 | 1 |
| Concerned for Wildlife Interactions | 1 |
| Create a One-Way Road Though the Property | 1 |
| Do Not Make Main Trail More Narrow | 1 |
| Ensure Quality Views for the Elevated Platform | 1 |
| Have Upper Parking and Drop-off | 1 |
| Keep Dogs Off Certain Trails | 1 |
| More Covered Areas | 1 |
| No Boardwalk Trail | 1 |
| No Kiosk | 1 |
| No Vehicles Not Even Maintenance | 1 |
| Remove or Change Secondary Multi-use Trail | 1 |
| Remove Ski Trails | 1 |
| Remove Trails That Overlap Wetlands (Ski and Hiking) | 1 |
| Use Restroom Location from Concept C | 1 |

Table of Comments Categorized by Category, Topics, & Quantities

| Category | Comment Topic | Number of Respondents |
|-----------|---|-----------------------|
| Access | No Parking | 37 |
| | Parking Only for ADA / Drop-off | 9 |
| | Add Parking in the Northwest | 8 |
| | Concerned About Car/Pedestrian Safety | 5 |
| | Ensure Emergency Vehicle Access | 5 |
| | Keep Gate At Entrance | 5 |
| | More Parking | 3 |
| | Create a One-Way Road Though the Property | 1 |
| | Have Upper Parking and Drop-off | 1 |
| | No Vehicles Not Even Maintenance | 1 |
| Amenities | Additional Amenities | 5 |
| | No Shelter | 5 |
| | No Restroom | 3 |
| | Add Dog Clean-up Stations | 2 |
| | Add Restroom in the Northwest | 2 |
| | No Platform in the Forest | 2 |
| | Ensure Quality Views for the Elevated Platform | 1 |
| | More Covered Areas | 1 |
| | No Kiosk | 1 |
| | Use Restroom Location from Concept C | 1 |
| Biking | Positive Comment Regarding the Mountain Bike Trails | 23 |
| | More Mountain Bike Trails | 10 |
| | Add Pump Track | 6 |
| | Keep Trail Uses Segregated / Concern with Bike Impacts and Interactions | 5 |
| | Reduce Biking Trails | 3 |
| | Remove Skills Park | 3 |
| | Add Bike Connections to the Right-of-Way | 2 |
| | Create Trail Links with Blueberry Hill | 2 |
| | Move Bike Park Closer to an Entrance | 2 |
| | Add Upper Bike Trails from Trail Concept 2 to Trail Concept 1 | 1 |
| General | Preserve Trees/Natural Areas | 12 |
| | Concerned About Costs / Maintenance | 8 |
| | Incorporate Historic Information | 3 |
| | Allow E-Bikes | 2 |
| | Change the Name | 2 |
| | Phase the Plan | 2 |
| | Concerned for Wildlife Interactions | 1 |
| | | |
| Trails | Remove Trails Near Eagle's Nest | 4 |
| | Add Water Access | 3 |
| | Add Upper Trail Loop by Water Tower in Trail Concept 1 | 2 |
| | Do Not Show Connections Across UA Lands | 2 |
| | Ensure Ski Connections | 2 |
| | Remove Ocean Bluff Trail | 2 |
| | Add "Boundary Trail" | 1 |
| | Add Connections to ROW | 1 |
| | Add Ski Trails | 1 |
| | Do Not Make Main Trail More Narrow | 1 |
| | Keep Dogs Off Certain Trails | 1 |
| | No Boardwalk Trail | 1 |
| | Remove or Change Secondary Multi-use Trail | 1 |
| | Remove Ski Trails | 1 |
| | Remove Trails That Overlap Wetlands (Ski and Hiking) | 1 |
| | | |
| | | |
| | | |

COMMENT PERIOD AND METHODS

Preliminary Concept Options

Preliminary concept designs for Meals Hill were developed from November 2020 through January 2021 by the project planning team. These options were based on a community survey conducted in the fall of 2020, two committee meetings, and a public meeting on November 16, 2020.

The preliminary concepts included two trail design options and three access design options for the entrance into the park at the southeast corner, off Hazelet Avenue. The purpose of providing multiple options was to show a range of development alternatives that provided a variety of experiences on the site.

Trail Concept 1: Multi-use Spine + Hiking Focus This concept uses the existing road as a multi-use trail with walking trails developed from the main artery. Vehicle access is limited to maintenance and emergency vehicles.

Trails Concept 2: Expanded Bike Use + Trail Connections This concept expands on the improvements shown on Trail Concept 1 and emphasizes a mix of use zones and trail types. This option includes the most diverse trail connections and amenities, as well as designated bike trails.

Access Concepts: Each of the three access concepts provides different options for parking, drop-off, and access to universal trails. Any of the access options can be paired with Trail Concept 1 or Trail Concept 2.

Access Concept A: Off-site & Lower Parking This concept proposes that the majority of the parking be provided off-site. A small parking area of 3-5 parking stalls is provided after the first switchback in the road to allow for accessible parking and access to a boardwalk and trail designed for universal use.

Access Concept B: Off-site & Upper Parking This concept proposes that the parking be provided off-site and at an upper parking lot within the site consisting of around 10 parking spots. The upper parking lot is proposed at an existing area of impact and provides immediate access to a universal trail. While this option brings cars furthest into the site, it has the least amount of grading needed to provide universal access.

Access Concept C: Off-site & Lower Parking with Upper Drop-off This concept incorporates elements from Access Concept A & B. The majority of the parking is provided off-site and a small parking area of 3-5 parking stalls is provided after the first switchback in the road to allow for accessible parking and access to a boardwalk and trail designed for universal use. A gated one-way road is proposed after the lower parking lot for an upper drop-off area where a restroom and shelter are located. The upper drop-off would be for occasional, permitted use by small groups, such as tour groups or classes, interested in using the amenities.

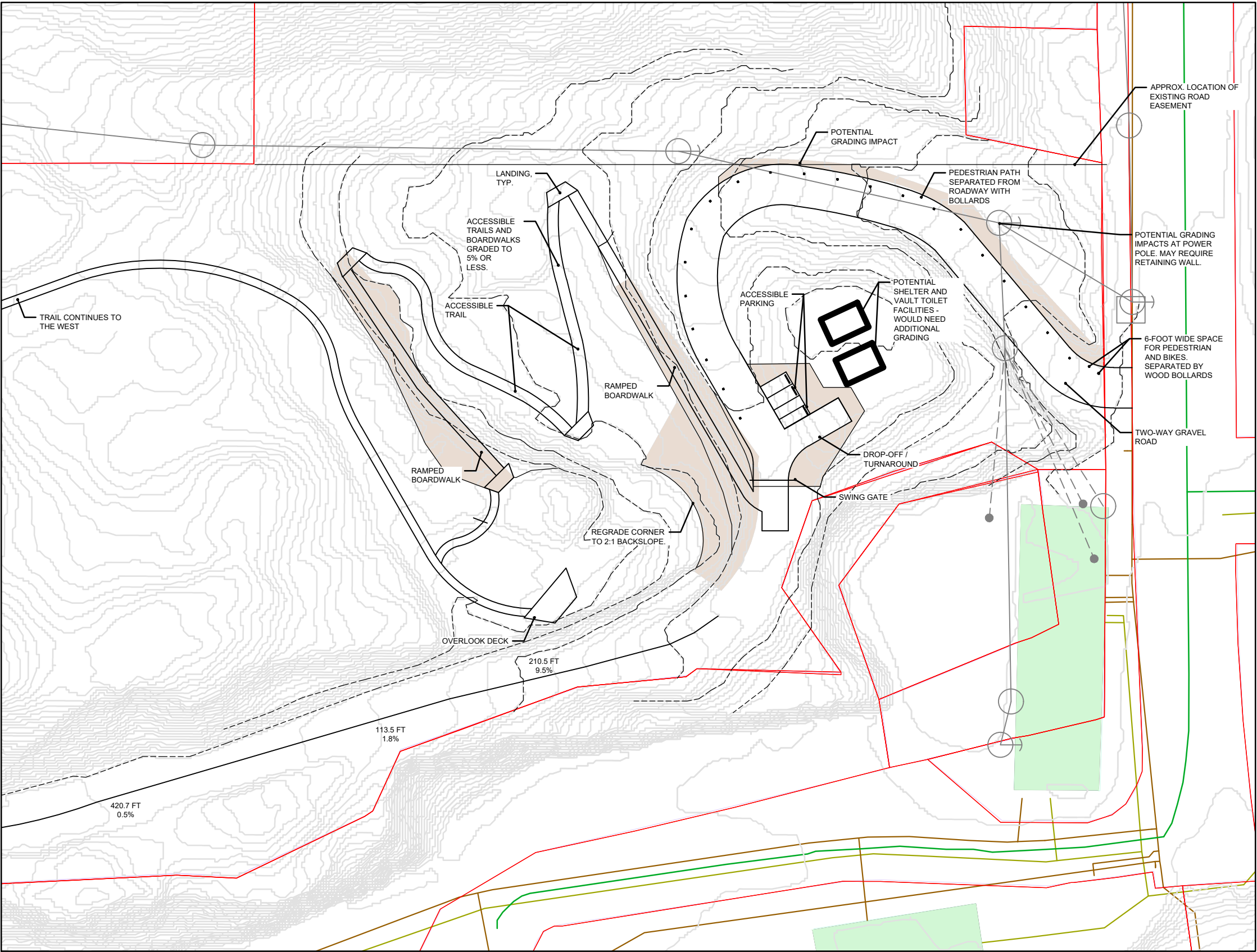
Survey Format

Public comments were collected via two methods. The first was an online platform that was linked to the project website. The online platform presented the various options with example photos of the proposed park elements. The second method was a paper survey provided at the Civic Center. Posters of

the concepts were provided at the Civic Center for review while filling out the in-person survey. The survey was open from February 8th through February 19th. During that time 126 individuals took the survey. Five of those surveys were taken in-person and entered manually into the survey results.

Both survey formats contained the same series of questions; a comment space was provided with each question for respondents to provide written feedback:

1. Which trail concept do you prefer?
 - Trail Concept 1
 - Trail Concept 2
 - Trail Concept 1, with changes
 - Trail Concept 2, with changes
2. Which access concept do you prefer?
 - Access Concept A
 - Access Concept B
 - Access Concept C
 - Access Concept A, with changes
 - Access Concept B, with changes
 - Access Concept C, with changes
3. Do you have any general comments or concerns you'd like to share with the project team?

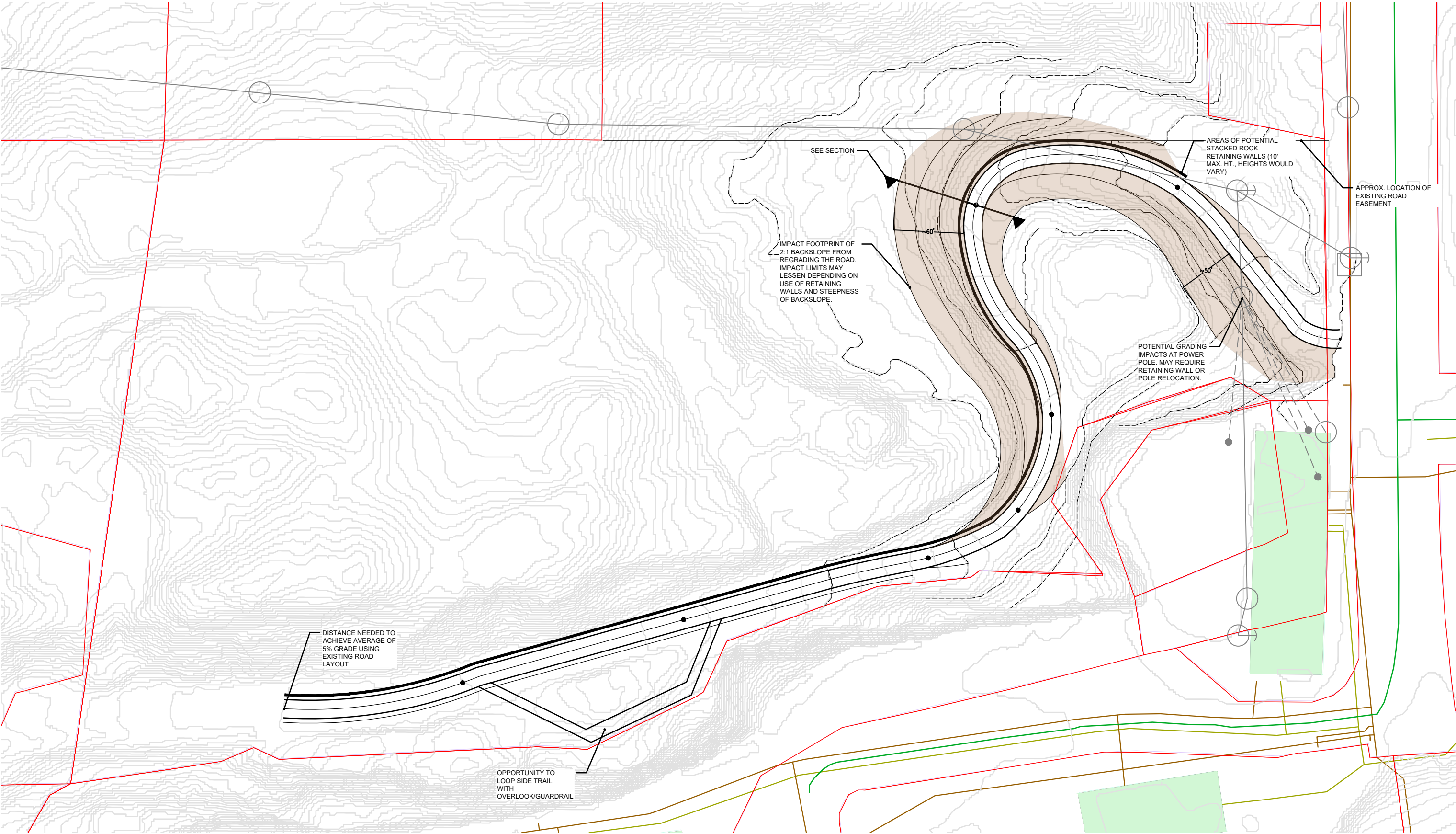


SMALL GRAVEL PARKING AREA - SUMMER ONLY



BOARDWALK CREATES ACCESSIBLE WALKWAY

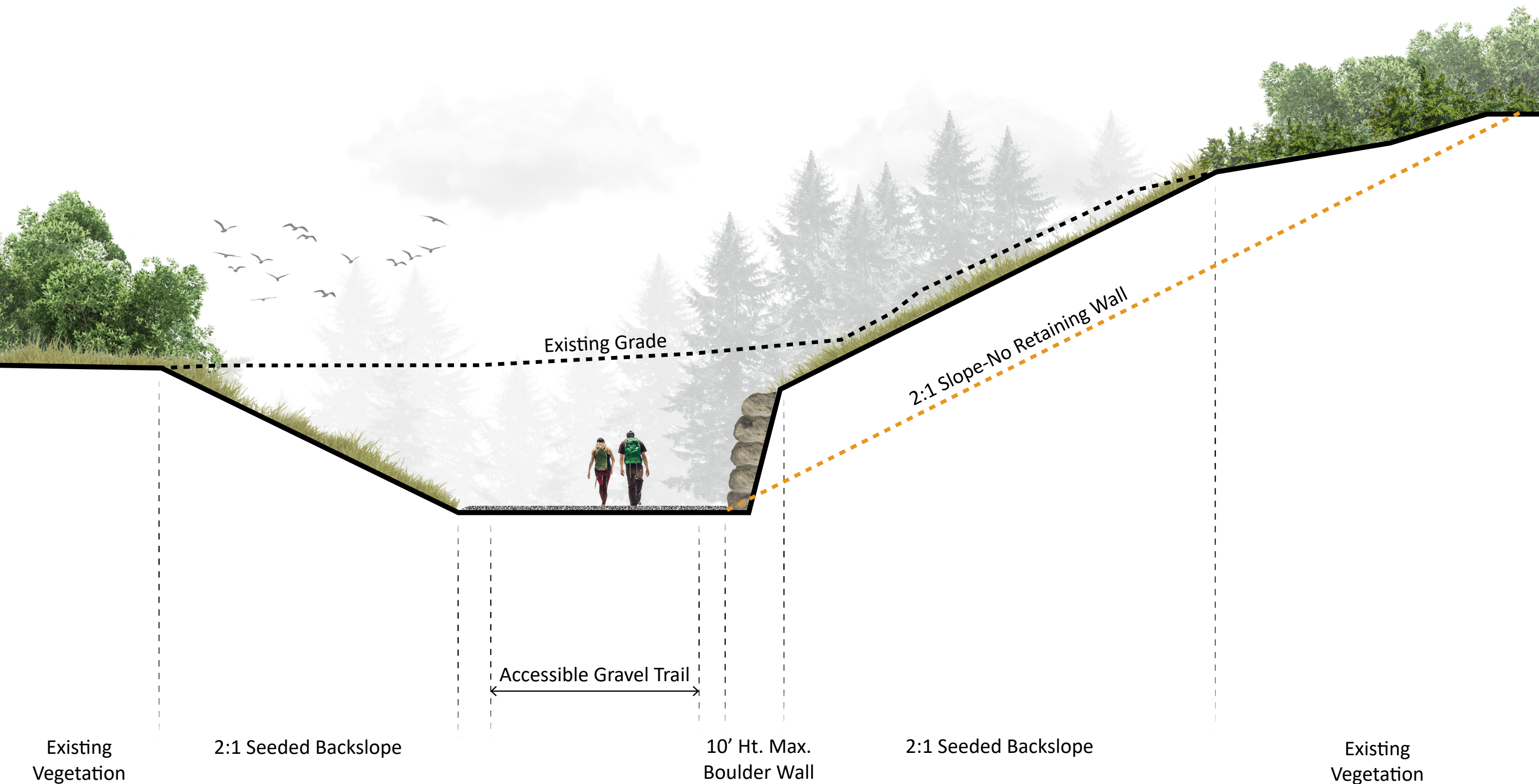
MEALS HILL-ACCESS CONCEPT A
ACCESSIBLE PARKING WITH BOARDWALK



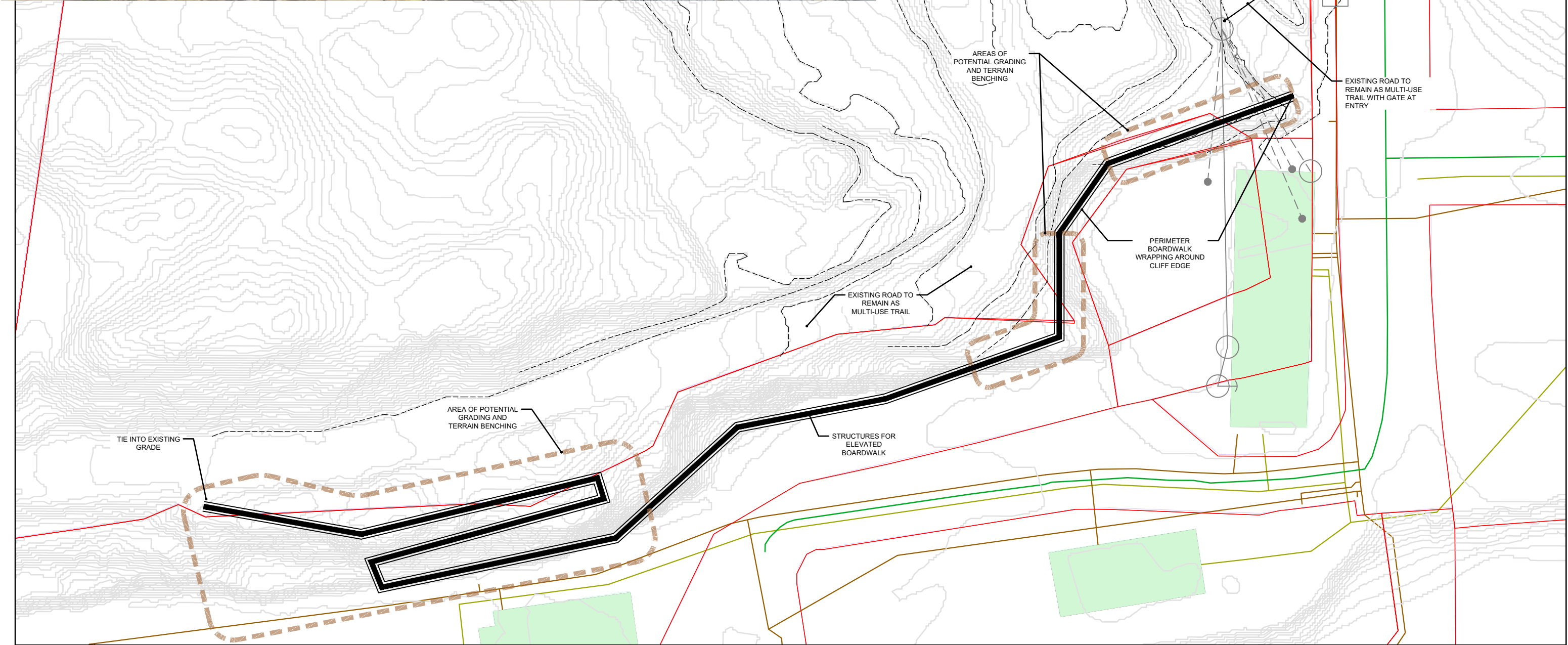
MEALS HILL-NEW CONCEPT (Based on Public Feedback)
NO PARKING WITH ACCESSIBLE MULTI-USE TRAIL

MEALS HILL: New Entry Concept (Based on Public Feedback)

No Parking w/ Accessible Multi-use Trail



ELEVATED BOARDWALK STRUCTURE WRAPPING AROUND THE CLIFF EDGE



MEALS HILL-NEW CONCEPT (Based on Public Feedback)
NO PARKING WITH BOARDWALK