



Partnering to Create Value for Our Customer

**City of Valdez, AK Automation
95 Gallon Bear Resistant Carts
Prepared for: Erick Garcia**

Goals Today:

- 1. Gain Insight on Your Challenges & Objectives**
- 2. Convey how Rehrig Pacific's approach and manufacturing process are aligned to support the City of Valdez**
- 3. Share how Rehrig's bear container design and in-field performance will allow City of Valdez to promote a culture of safety, enhance resident experience, and boost collection efficiencies**

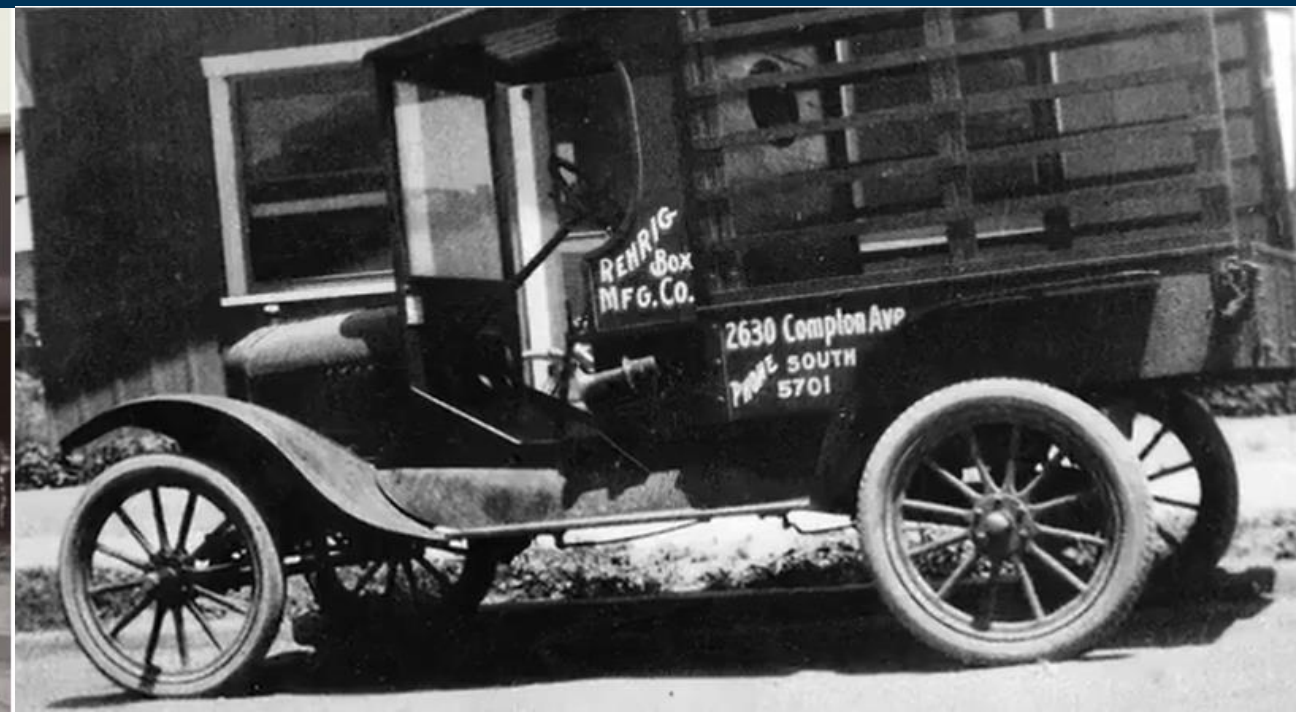
REHRIG MISSION

The Rehrig Pacific family celebrates our people and empowers them to create innovative solutions that effectively and responsibly move goods, resources and ideas.

REHRIG VALUES



REHRIG HISTORY



In 1992, Rehrig Pacific line of Roll-out Carts was introduced. Growing partnerships led to a significant investment in plants and machinery to make and supply these large injection molded parts

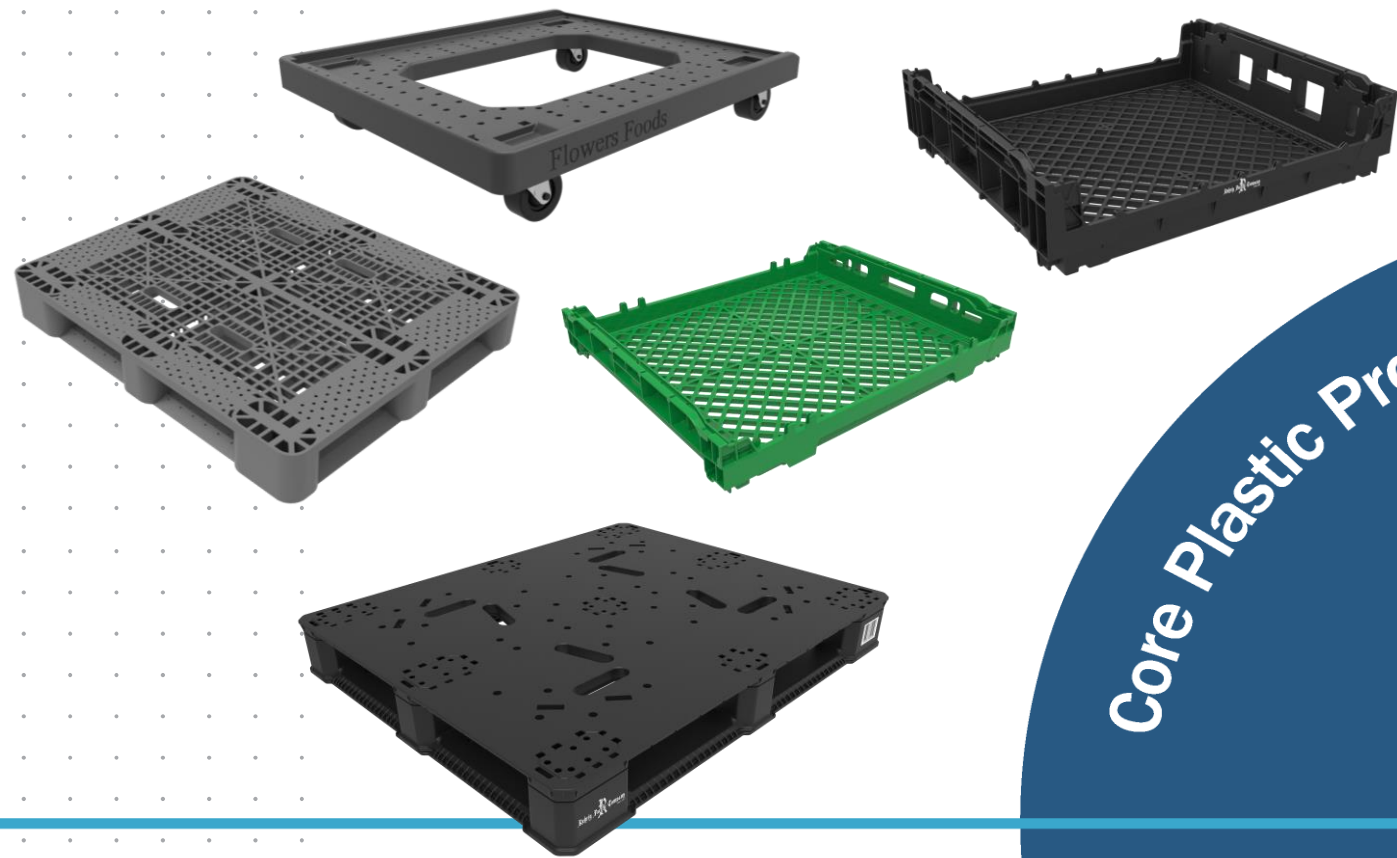


Internal Lift Skirt
Improves durability and allows for improved freight efficiency by 44%. (702 Carts)

Catch Bar
This bar is fully captured with no holes in the cart body. AKA – Leak Proof

Carbon Grip
Reduces slipping of automated arms by 20% wet or dry.





Product Categories



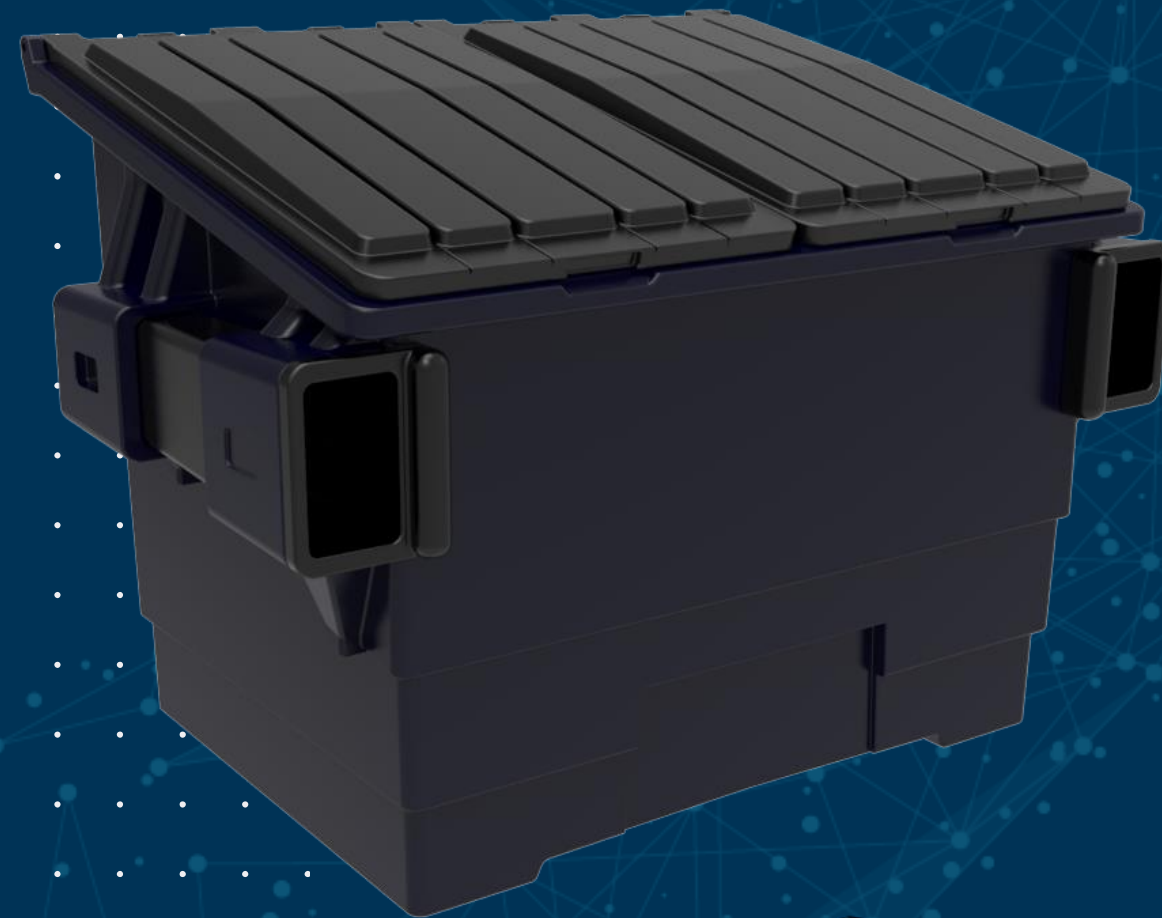




Rehrig
Pacific
Company
SINCE 1913

we
see
physics.

ENVIRONMENTAL



WHY WASTE COLLECTION IS SO DANGEROUS



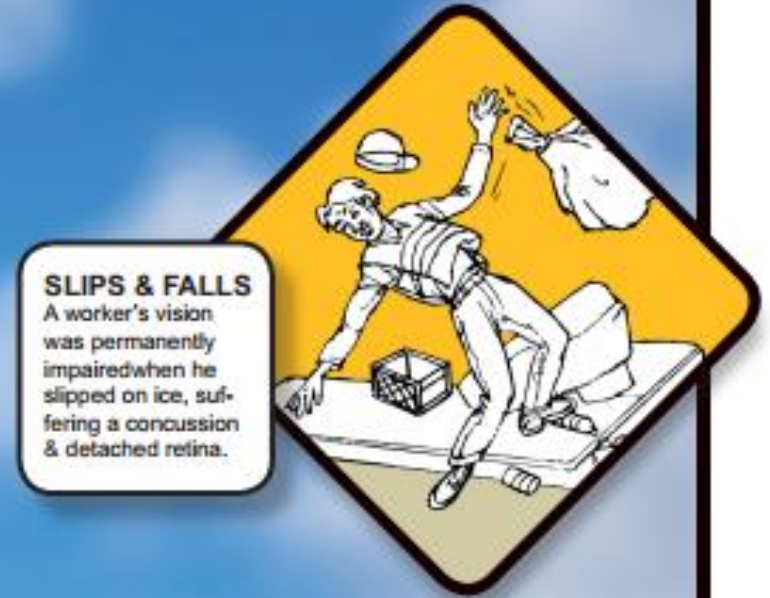
HIT BY VEHICLES
Workers in streets have no protection from passing vehicles.



INFECTIOUS DISEASES
Workers are exposed to diseases through used hypodermic needle "sticks" & vermin bites.



CUTS AND LACERATIONS
Many workers are cut by broken glass & sharp objects.



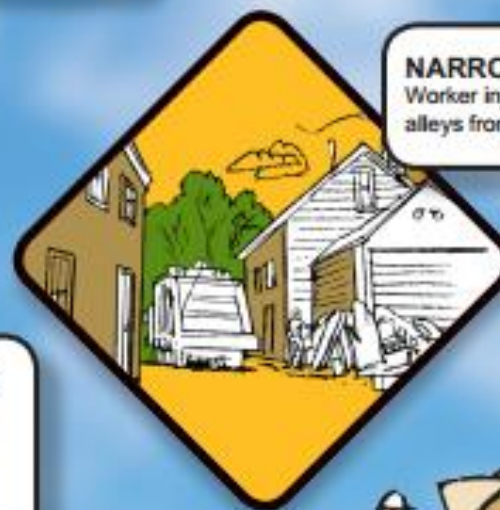
SLIPS & FALLS
A worker's vision was permanently impaired when he slipped on ice, suffering a concussion & detached retina.



REPETITIVE MOTION AND JOINT INJURIES
Workers suffer multiple joint & muscle injuries, some requiring surgery and extensive physical therapy.



BACK INJURIES
Two workers in their 20's suffered back injuries; one totally disabled, one who may be.



NARROW ALLEY DANGERS
Worker injuries multiply in narrow alleys from piled waste and vermin.



5TH highest civilian fatal injury rate

Nationally, solid waste and recycling collection workers are 3 times more likely to be killed on the job than policemen or fire fighters. Source: U.S. Bureau of Labor Statistics, 2013 data

Benefits of Automation

Safety

- **By converting to automation, The City of Valdez is mitigating risk of injury to labor force, resulting in lower lost work days.**
- **Reduce amount of Worker's Comp Cases**
- **Overall improved Employee Health + Job Satisfaction**

Efficiency

- **Fully Automated collection increases the amount of households serviced per worker per hour.**
- **Efficiency Gains are aligned with reduction in overall operating costs**

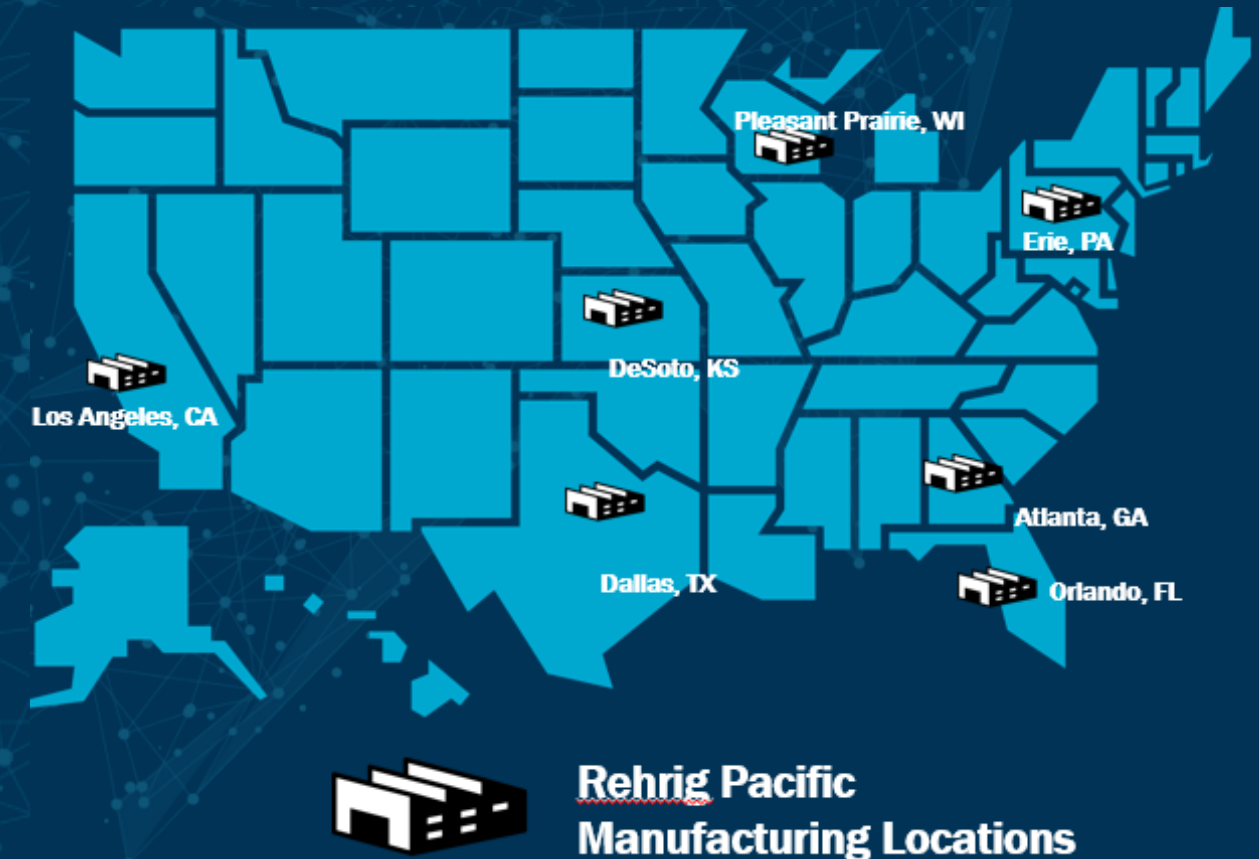
Curbside Benefits

- **Bear Cart Lids attached and locked to prevent bears, pests, odors, and lost lids**
- **Prevention of loose garbage due to high winds due to bear cart locks**
- **Consistent Curb Side Display across the community**

AUTOMATION = INCREASED CUSTOMER SATISFACTION

ROLL OUT CARTS = Reducing total cost of ownership

- **7 production facilities nationwide to ensure successful on-time delivery**
- **Industry Leading 1 for 1, 3 year warranty for bear resistant carts**
- **Industry leading freight capacity (340 per load for 95BC)**
- **Sustainability through injection molded process using maximum recycled content**



Bear Resistant Cart Overview

What makes the Bear Cart different from a standard roll out cart?

- Includes a Gravity Lock designed specifically to keep bears and other critters out while unlatching during the tip or service cycle.
- Includes a Thermoformed Lid designed with 2 layers of heavy-duty plastic material including a 2.5" overlap between the cart body and the inner lid which aid in preventing unintentional access by a bear.
- Addition of Body Bars to increase the structural strength around the upper rim of the cart.



Automated Tipping Visual Guidelines



we
see
physics.

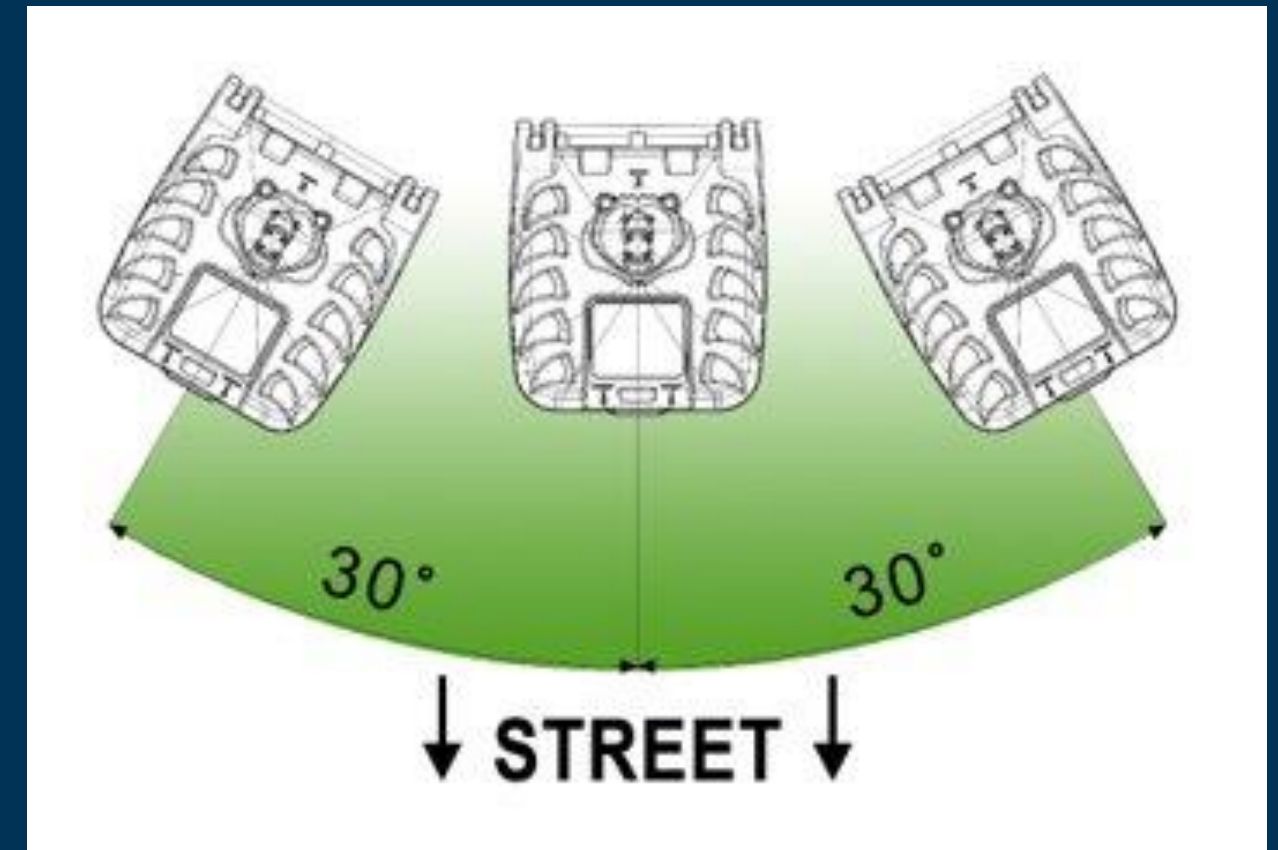


Need Smooth & Quick Motion

Guidelines for Successful Operation

- **Straight Grab (30 Degrees or Less)**
- **Minimized Cart Distortion**
- **Smooth Consistent Motion**
- **Tipping Path Close to Truck**
- **Semi Fast to Fast Cycle**
- **Abrupt Stop**

With the many configurations of automated tipping equipment in the market and in various conditions of age and wear, understanding these principles will greatly improve your success of operation.



Questions?

Thank you!



**we
see
physics.**