

DECEMBER 2018

VALDEZ NEW BOAT HARBOR

© Gary Minish

CONSTRUCTION

Phase 2 Uplands Facilities and Inner Harbor Facilities

The contractors corrected most of the Punchlist items noted during the Architectural, Electrical and Mechanical Substantial Completion inspections of the buildings.

Pacific Pile and Marine (PPM) installed two vertical piles, mooring frame and rock anchors for the Drive Down (DD) bridge, continued assembling the DD float components into modules and staging for installation after the DD bridge is set in place. Testing tensions of rock anchors, installing two batter piles with rock anchors, and placing the 140-foot long bridge and support pontoon are scheduled during January.

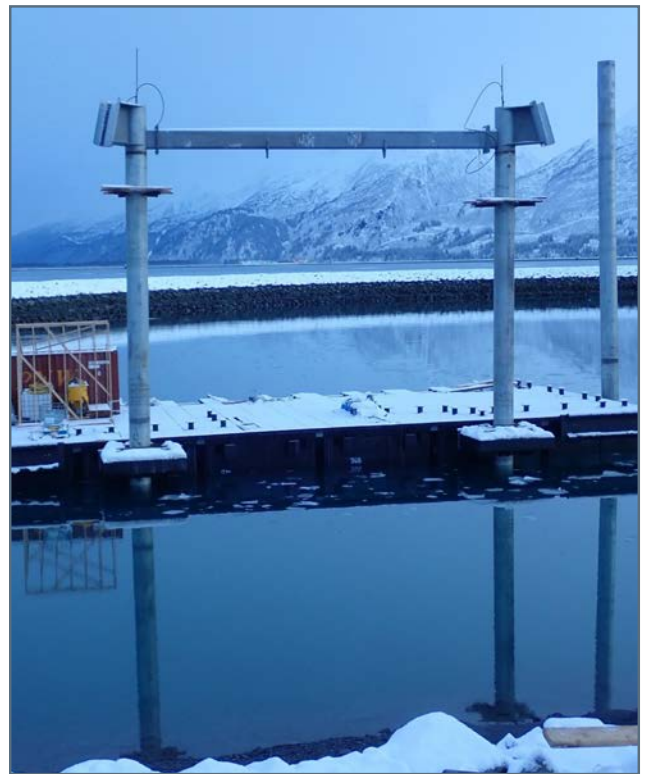
Zastrow installed the metal roofing for the east and west picnic canopies and placed concrete for the abutment retaining wall. Harris Sand & Gravel (HSG) excavated and backfilled the retaining wall and extended the water line to the abutment wall for service to the Drive-down (DD) float. HSG continued installing pipe for water systems on the head floats and main floats for the west two-thirds of the Mooring Basin. Puffin started pulling electrical conductor and installing pedestals on the floats.



Placing concrete for abutment retaining wall

PROJECT ACHIEVEMENTS

- Placed roofing and finished most of the work for the east and west picnic canopies
- Installed two vertical piling, mooring frame and grouted rock anchors for the DD bridge
- Completed placing concrete for DD bridge abutment retaining wall



Mooring frame for Drive Down (DD) bridge/float welded between vertical piles secured with anchors grouted into bedrock

DECEMBER 2018 PROJECT UPDATE (CONT.)

DESIGN TEAM - CONSTRUCTION SUPPORT

R&M continued reviewing submittals and resubmittals, responded to Requests for Information (RFIs), clarifications of construction documents and evaluated conflicts in the field. R&M continued inspection of drilling and driving piles and provided inspection, sampling and testing of concrete for the abutment retaining wall. R&M addressed ADEC review comments for design revisions of water services from the Uplands to the floats.

USACE NAVIGATION IMPROVEMENTS

The City continues working with the USACE on closeout of the contract. The Coast Guard still needs to install the Aids to Navigation features for the new harbor.

FUTURE MILESTONES

- Install two batter piles, grout rock anchors and test anchor tension for DD bridge mooring frame
- Place the bridge, support pontoon, DD float and mooring piles
- Finish installing electrical and mechanical systems for mooring floats T, U, V and W
- Install the piling, floats and gangway for mooring floats R and S
- Install electrical and mechanical systems for mooring floats R and S and the DD float
- Closeout City's contract with USACE for the dredging and breakwater work
- Commission and test the Bilge Treatment equipment (after the mooring floats are completed)



Drilling first 30" diameter vertical piling to support mooring frame for DD bridge/float

PROJECT TEAM

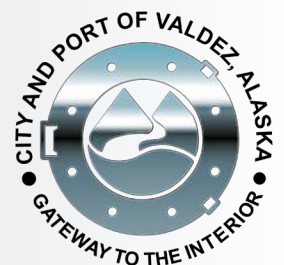
Nate Duval, Capital Facilities Project Manager, City of Valdez || 907.835.5478 ext. 1

Ronnie Barcak, Project Manager, USACE || 907.753.5755

Kim Nielsen, Group Manager, Waterfront Engineering, R&M Consultants || 907.646.9602

Andy Romine, Project Manager, Pacific Pile and Marine || 907.360.4580

Ron Rozak, Construction Manager, Arcadis || 907.382.2933





Diver attaching submerged water line to straps below floats



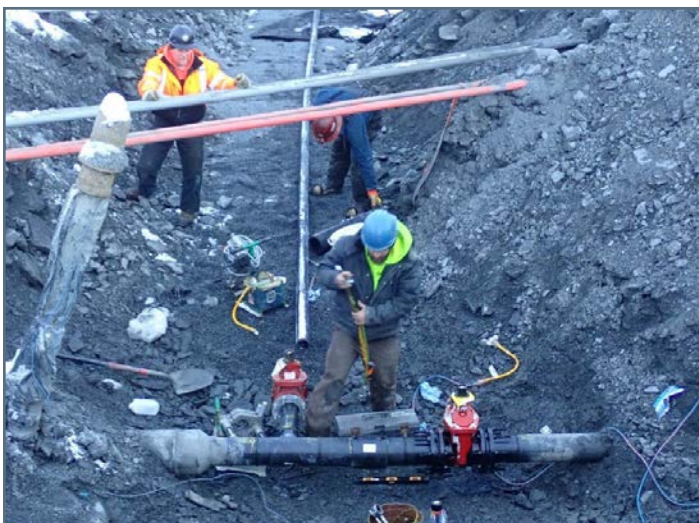
Pulling cable beneath float decking to power pedestals



Placing concrete for slab below bridge abutment cap



Spreading pea gravel on insulation over water line to DDF



Installing valve and water line from main to DDF abutment



East Picnic Area complete with metal roof

PROJECT SCHEDULE

Task	2016	2017				2018				2019			
	Q4	Q1	Q2	Q3	Q4	Q1	Q2	Q3	Q4	Q1	Q2	Q3	Q4
CITY OF VALDEZ WORK													
Phase 1 Uplands (Civil work except paving)													
Phase 2 *													***
Design/Bid/Award/NTP													
Mooring Floats													
Fabrication/Delivery													
On-site Construction													
Drive Down Float													
Fabrication/Delivery													
On-site Construction													
In-water Rock Removal													
West Rock													
East Rock													
Uplands Facilities (Warehouse, East Restroom, Bilge Water Bldg.)													
Fabrication/Delivery													
On-site Construction													
Paving/Landscaping/Site Furnishings													
Master Waterfront Plan (To be determined)													
Phase 3 Future Facilities (To be determined with Master Plan)													
Launch Ramp, Fish Cleaning Station, Wash-Down Pad, W. Restroom													
CORPS OF ENGINEERS (USACE) WORK													
Harbor Dredging and Breakwater Construction**													

*Solid lines reflect PPM's October 2018 schedule and PPM's recent communications about potential changes; PPM's November update was not available for this report.

** WMC contract for dredging and breakwater is complete. *** Contract requires Phase 2 work to be completed by October 1, 2019.

BUDGET SUMMARY

Description	Original Budget	Revised Budget	Committed	Expenditures 12/31/18	% Spent	Estimate at Completion
DESIGN	\$ 2,451,971	\$ 3,892,420	\$ 3,892,420	\$ 3,495,480	90%	\$ 3,892,420
Design	\$ 1,851,971	\$ 2,215,983	\$ 2,215,983	\$ 2,231,917	101%	\$ 2,231,917
Design Team Services During Construction	\$ 600,000	\$ 1,676,437	\$ 1,676,437	\$ 1,263,562	75%	\$ 1,660,503
PROJECT MANAGEMENT	\$ 2,340,548	\$ 2,919,405	\$ 2,919,405	\$ 2,721,749	93%	\$ 3,090,306
Project Management	\$ 1,740,548	\$ 2,547,868	\$ 2,547,868	\$ 2,350,211	92%	\$ 2,718,769
Inspection/Testing	\$ 600,000	\$ 371,537	\$ 371,537	\$ 371,537	100%	\$ 371,537
USACE CONSTRUCTION - CITY PORTION	\$ 9,345,453	\$ 7,645,453	\$ 7,525,453	\$ 5,141,258	67%	\$ 6,522,845
Initial Basin	\$ 7,145,453	\$ 7,145,453	\$ 7,145,453	\$ 4,761,258	67%	\$ 6,460,980
Other Basin Modifications	\$ 2,200,000	\$ 500,000	\$ 380,000	\$ 380,000	76%	\$ 61,864
CITY CONSTRUCTION	\$ 39,023,904	\$ 44,738,748	\$ 44,661,583	\$ 40,670,204	91%	\$ 44,738,748
Phase 1 Uplands	\$ 19,013,040	\$ 19,191,437	\$ 19,191,437	\$ 19,191,437	100%	\$ 19,191,437
Phase 2 Base/Drivedown Floats, Uplands Fac.	\$ 8,976,100	\$ 25,090,832	\$ 25,090,832	\$ 21,161,555	84%	\$ 25,090,832
Upland Facilities (with Phase 2)	\$ 4,046,643	\$ -	\$ -	\$ -	0%	\$ -
Drive Down Float (with Phase 2)	\$ 4,951,721	\$ -	\$ -	\$ -	0%	\$ -
Drive-Down Float In-water Mods (with Phase 2)	\$ 1,342,500	\$ -	\$ -	\$ -	0%	\$ -
Hotel Hill Clearing	\$ 64,900	\$ 64,900	\$ 64,900	\$ 64,900	100%	\$ 64,900
Fish Cleaning	\$ 324,000	\$ -	\$ -	\$ -	0%	\$ -
Electric Primary	\$ 225,000	\$ 311,579	\$ 311,579	\$ 252,312	81%	\$ 311,579
CCTV/Security/Head End Equipment	\$ 80,000	\$ 80,000	\$ 2,834	\$ -	0%	\$ 80,000
ADMINISTRATION	\$ 60,000	\$ 100,000	\$ 99,245	\$ 92,554	93%	\$ 100,000
FFE	\$ 100,000	\$ 100,000	\$ 100,331	\$ 864	1%	\$ 100,331
CONTINGENCY (@ 15% original budget)	\$ 7,998,281	\$ 1,924,131				\$ 2,875,507
TOTAL CITY FUNDED	\$ 61,320,158	\$ 61,320,158	\$ 59,198,437	\$ 52,122,108	85%	\$ 61,320,158
USACE FUNDED**	\$ 21,277,761	\$ 21,277,761	\$ 21,277,761	\$ 20,558,716	97%	\$ 21,277,761
TOTAL CITY/USACE FUNDING	\$ 82,597,919	\$ 82,597,919	\$ 80,476,198	\$ 72,680,824	88%	\$ 82,597,919

* Data includes expenses from 5/22/14 which is the start of Bond eligible costs authorized by COV Resolution 14-33. \$254,321.77 in R&M expenses and other costs are not included.

** Reconciliation with USACE is in process; updates are anticipated.