

www.thestagedepot.com

1 Portable Stage Retailer in the US!

Ph: 877-884-3426

orders@thestagedepot.com

WE ACCEPT P.O.'s FROM
Churches, Schools, Gov.
Orgs. & Many Companies.

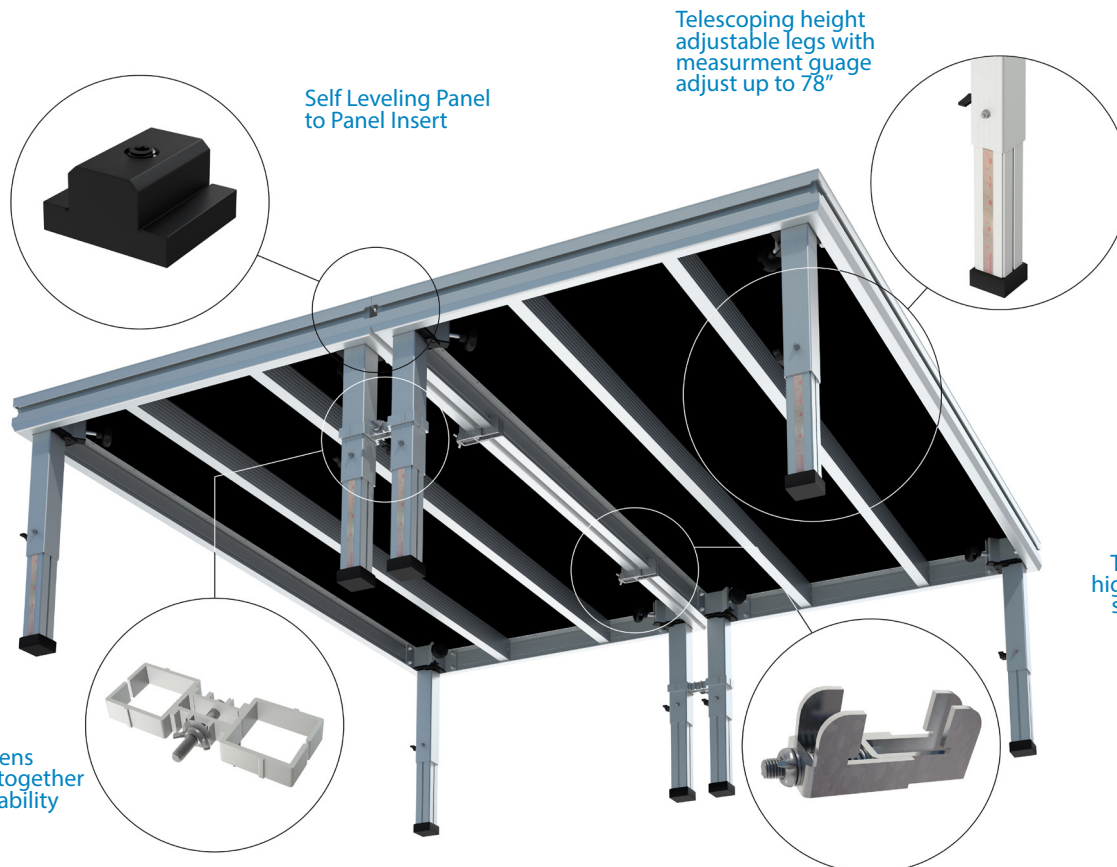
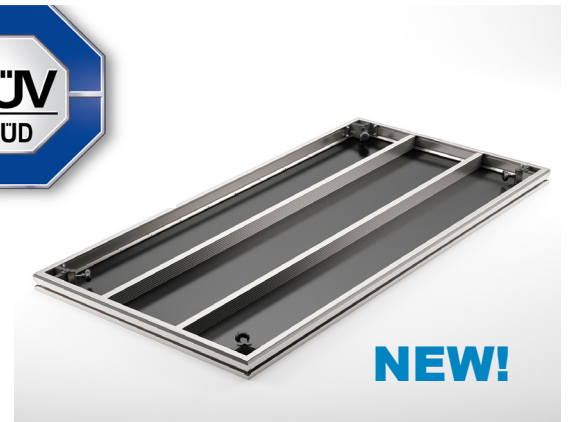
Financing is Available!

MONEY SAVING NEW DESIGN!

**NEW! STRONGER
CHANNELLED PANEL DESIGN!
4' X 8' PANELS NOW ONLY
NEED 4 LEGS INSTEAD OF 6!**



TUV rated to the
highest international
safety standards



Can be set-up on curbs, slopes, hills, etc.



Super strong and stable!
Perfect for dynamic activities
such as dancing and jumping!

ProStage Staging

- Pro-Grade staging great for dynamic loads such as dancing or jumping.
- 10 year warranty
- Available in **Industrial Finish** or Black Production Grade Finish
- Modular, height-adjustable, telescoping leg staging system based on aluminium construction.
- Can be installed on flat as well as on uneven surfaces such as slopes, curbs, and hills.
- Available in metric and imperial sizes; **4ft x 8ft** platforms.
- Available with various heights of adjustable legs which can be set at heights ranging from **16" up to 78" (40cm to 200cm) high.**
- Universal leg corners allow you to use square or round cut pipe legs on the same platform. Perfect for production companies!
- This system is designed for various events and concert markets.
- Stairs, guardrails, and transportation trolleys are available.
- Weight capacity: 153 lbs per sq. foot (750 KGS/sq. Meter).
- TUV rated at 500kg/m2 to comply with the highest safety standards

Panels, Legs, Guardrails, Skirts & Accessories

NEW
PRODUCT



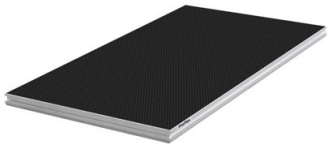
Choose from Height Adjustable or fixed stairs



Height adjustable legs



Stages be set at an be set at height ranges from 16" up to 78"



Available in industrial finish or black production grade finish.

Stage Panel Features:

- 12mm panel thickness
- 4' x 8' Panel sizes (107 lbs panel weight).
- Weight capacity:153 lbs per sq. foot (750 KGS/sq. Meter).
- TUV rated at 500kg/m2 to comply with the highest safety standards



Height Adjustable Telescoping Legs

Leg Features:

- Lightweight, aluminum, telescoping, height adjustable legs with rubber feet
- Available in various lengths 16' up to 78"

Leg Height Available:

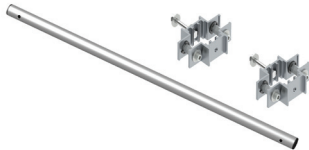
- SDTL1- 16", adjustable from (15 3/4" to 19 1/2")
- SDTL2- 24", adjustable from (19 3/4" to 27 1/2")
- SDTL3- 24" and 32", adjustable from (23 3/4" to 35 1/2")
- SDTL4- 32", 40", 48", adjustable from (31 1/2" to 51")
- SDTL5- 40", 48", 56", 62", adjustable from (39 1/2" to 62 3/4")
- SDTL6- 48", 56", 62", 70", 78", adjustable from (42 1/4" to 78 1/2")



Guard rails



Wheeled leg adaptors fit on stage legs to create mobile stages and drum risers!

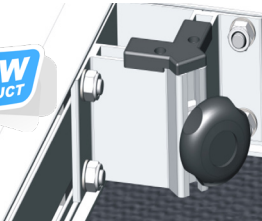


Leg braces (which come with mounting brackets) are recommended to be installed on all stages higher than 36" (90cm) high to provide added stability



Quality construction from the highest grade materials that's our promise

NEW
PRODUCT



New universal corner adaptors built into the panels allow you to use our square legs or cut your own round pipe legs.



NEW
PRODUCT



Panel Cart



Accessory case



Can even be set-up on ultra steep grades or inside stadiums



Easily set-up on slopes and sidewalks



Caster board platform trolley



Guardrail trolley