

AUGUST 2018

# VALDEZ NEW BOAT HARBOR

## CONSTRUCTION

### Phase 2 Uplands Facilities and Inner Harbor Facilities

Uplands facilities work primarily focused on finishing the Warehouse Building, installing sidewalks around the three buildings, paving the access driveways, pathways and parking lots, planting trees, spreading topsoil and seeding.

Pacific Pile and Marine (PPM) finished drilling and blasting and continued breaking high areas of bedrock with a large hydraulic hammer. Dredging was completed in the Mooring Basin and approximately half finished in the Drive Down Float Basin. Current progress indicates the dredging might finish by late-September.

Two barges with pile driving equipment, piling and floats for the West mooring basin arrived in Valdez on August 8. After dredging the remaining rock, surveying the dredged area, assembling head floats and installing temporary template piling, PPM started drilling and installing piling for the west head floats. Drive-down float modules, transfer bridge and related items have been fabricated and are stored at Seattle area facilities. PPM anticipates that the mooring floats and bridge will be loaded on a barge and towed to Valdez in early October.



Breaking and excavating rock for dredging and disposing



Spreading asphalt for parking area near Warehouse Building

## PROJECT ACHIEVEMENTS

- Delivered barges with equipment and materials; started driving piles and installing floats for West basin
- Finished assembly of drive-down float components at Seattle area shops
- Finished blasting and dredging all the bedrock at the West basin
- Finished blasting and dredged half the bedrock at the East basin
- Placed concrete sidewalks at East Restroom, Bilge Building and Warehouse Building
- Placed topsoil, seed and trees
- Paved driveways, pathways and parking areas except for abutment area at Drive-Down bridge



# AUGUST 2018 PROJECT UPDATE (CONT.)

## DESIGN TEAM - CONSTRUCTION SUPPORT

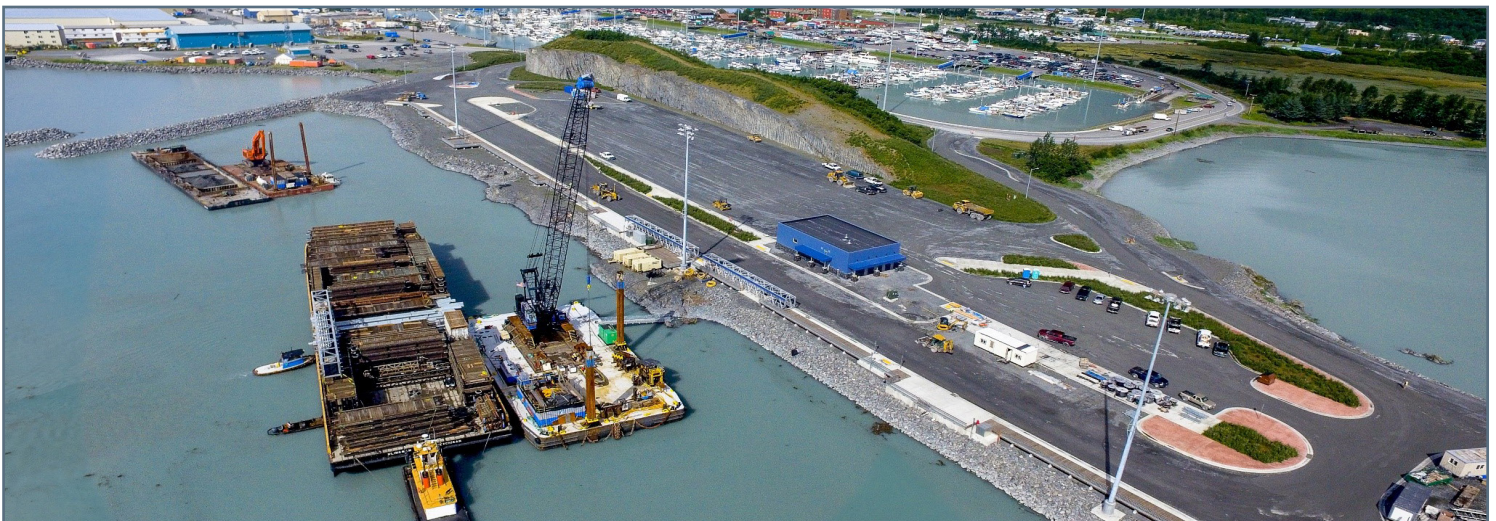
R&M continued reviewing some submittals, responded to Requests for Information (RFIs), clarifications of construction documents and conflicts in the field, performed Special Inspections and observations of building and site work, observations of drilling, dredging, and installing piling and floats.

## USACE NAVIGATION IMPROVEMENTS

The USACE is administering the Western Marine Construction (WMC) contract for dredging the navigation channel and float basin and construction of the breakwaters. The USACE is reportedly working toward fiscal closeout of their contract with WMC. Arcadis and the City will continue coordinating with USACE for closeout of the City's contract with USACE.

## FUTURE MILESTONES

- Commission and test the Bilge Treatment Building equipment
- Commission and test all systems for the Warehouse Building
- Apply striping and markings on asphalt pavement
- Install landscape boulders, benches, architectural concrete panels, signs, flagpole, picnic canopies
- Perform Substantial Completion inspections for Uplands Facilities
- Finish breaking and dredging bedrock and surveying the Drive-Down Float Basin
- Submit Rock Anchor Pile Installation Plan for Drive-Down Bridge Mooring Frame
- Install Gangway #1 and start installing electrical and mechanical systems on mooring floats
- Closeout City's contract with USACE for the dredging and breakwater work



Aerial view after paving and landscaping. Large barge with piling and floats and pile driving barge with crane is unloading gangways and equipment to Uplands. Dredge equipment and bottom dump barge (upper left) are removing the final portion of bedrock in the Mooring Basin. (J. Talbott)

## PROJECT TEAM

Nate Duval, Capital Facilities Project Manager, City of Valdez || 907.835.5478 ext. 1

Ronnie Barcak, Project Manager, USACE || 907.753.5755

Kim Nielsen, Group Manager, Waterfront Engineering, R&M Consultants || 907.646.9602

Andy Romine, Project Manager, Pacific Pile and Marine || 907.360.4580

Ron Rozak, Construction Manager, Arcadis || 907.382.2933







Crane lifting a pile from materials barge for installing on the west end of the head floats



Temporary pile (left) maintains position of floats while drilling 10 feet into bedrock to install the first mooring pile for the head floats



Piling installed for west portion of the head floats required drilling 10 feet into bedrock to create a "socket" for the piling



Installing canopy, then side panels, on Gangway #1



Wood wind screen and sidewalks installed at East Restroom



Spreading topsoil after planting trees east of Warehouse building



# PROJECT SCHEDULE

Task	2016	2017				2018				2019			
	Q4	Q1	Q2	Q3	Q4	Q1	Q2	Q3	Q4	Q1	Q2	Q3	Q4
<b>CITY OF VALDEZ WORK</b>													
<b>Phase 1 Uplands</b> (Civil work except paving)													
<b>Phase 2 *</b>													***
<b>Design/Bid/Award/NTP</b>													
<b>Mooring Floats</b>													
Fabrication/Delivery													
On-site Construction													
<b>Drive Down Float</b>													
Fabrication/Delivery													
On-site Construction													
<b>In-water Rock Removal</b>													
West Rock													
East Rock													
<b>Uplands Facilities</b> (Warehouse, East Restroom, Bilge Water Bldg.)													
Fabrication/Delivery													
On-site Construction													
Paving/Landscaping													
<b>Master Waterfront Plan</b> (To be determined)													
<b>Phase 3 Future Facilities</b> (To be determined with Master Plan)													
Launch Ramp, Fish Cleaning Station, Wash-Down Pad, W. Restroom													
<b>CORPS OF ENGINEERS (USACE) WORK</b>													
<b>Harbor Dredging and Breakwater Construction**</b>													

\*Solid lines reflect PPM's August 2018 schedule update. \*\* WMC finished dredging and breakwater; contract closeout continues.

\*\*\* Contract requires Phase 2 work to be completed by October 1, 2019.

## BUDGET SUMMARY

Description	Original Budget	Revised Budget	Committed	Expenditures 8/31/18	% Spent	Estimate at Completion
<b>DESIGN</b>	\$ 2,451,971	\$ 3,659,047	\$ 3,659,047	\$ 3,201,356	87%	\$ 3,659,047
Design	\$ 1,851,971	\$ 2,215,983	\$ 2,215,983	\$ 2,231,917	101%	\$ 2,231,917
Design Team Services During Construction	\$ 600,000	\$ 1,443,064	\$ 1,443,064	\$ 969,439	67%	\$ 1,427,130
<b>PROJECT MANAGEMENT</b>	\$ 2,340,548	\$ 2,919,405	\$ 2,919,405	\$ 2,547,572	87%	\$ 2,919,405
Project Management	\$ 1,740,548	\$ 2,547,868	\$ 2,547,868	\$ 2,176,035	85%	\$ 2,547,868
Inspection/Testing	\$ 600,000	\$ 371,537	\$ 371,537	\$ 371,537	100%	\$ 371,537
<b>USACE CONSTRUCTION - CITY PORTION</b>	\$ 9,345,453	\$ 7,645,453	\$ 7,525,453	\$ 5,141,258	67%	\$ 7,525,453
Initial Basin	\$ 7,145,453	\$ 7,145,453	\$ 7,145,453	\$ 4,761,258	67%	\$ 7,145,453
Other Basin Modifications	\$ 2,200,000	\$ 500,000	\$ 380,000	\$ 380,000	76%	\$ 380,000
<b>CITY CONSTRUCTION</b>	\$ 39,023,904	\$ 44,715,844	\$ 44,638,679	\$ 33,900,097	76%	\$ 44,715,844
Phase 1 Uplands	\$ 19,013,040	\$ 19,191,437	\$ 19,191,437	\$ 19,191,437	100%	\$ 19,191,437
Phase 2 Base/Drivedown Floats, Uplands Fac.	\$ 8,976,100	\$ 25,067,928	\$ 25,067,928	\$ 14,391,448	57%	\$ 25,067,928
Upland Facilities (with Phase 2)	\$ 4,046,643	\$ -	\$ -	\$ -	0%	\$ -
Drive Down Float (with Phase 2)	\$ 4,951,721	\$ -	\$ -	\$ -	0%	\$ -
Drive-Down Float In-water Mods (with Phase 2)	\$ 1,342,500	\$ -	\$ -	\$ -	0%	\$ -
Hotel Hill Clearing	\$ 64,900	\$ 64,900	\$ 64,900	\$ 64,900	100%	\$ 64,900
Fish Cleaning	\$ 324,000	\$ -	\$ -	\$ -	0%	\$ -
Electric Primary	\$ 225,000	\$ 311,579	\$ 311,579	\$ 252,312	81%	\$ 311,579
CCTV/Security/Head End Equipment	\$ 80,000	\$ 80,000	\$ 2,834	\$ -	0%	\$ 80,000
<b>ADMINISTRATION</b>	\$ 60,000	\$ 100,000	\$ 99,245	\$ 92,165	92%	\$ 100,000
FFE	\$ 100,000	\$ 100,000	\$ -	\$ -	0%	\$ 100,000
<b>CONTINGENCY (@ 15% original budget)</b>	\$ 7,998,281	\$ 2,180,408				\$ 2,300,408
<b>TOTAL CITY FUNDED</b>	\$ 61,320,158	\$ 61,320,158	\$ 58,841,829	\$ 44,882,449	73%	\$ 61,320,158
<b>USACE FUNDED**</b>	\$ 21,277,761	\$ 21,277,761	\$ 21,277,761	\$ 20,558,716	97%	\$ 21,277,761
<b>TOTAL CITY/USACE FUNDING</b>	\$ 82,597,919	\$ 82,597,919	\$ 80,119,590	\$ 65,441,165	79%	\$ 82,597,919

\* Data includes expenses from 5/22/14 which is the start of Bond eligible costs authorized by COV Resolution 14-33. \$254,321.77 in R&M expenses and other costs are not included.

\*\* Reconciliation with USACE is in process; updates are anticipated.