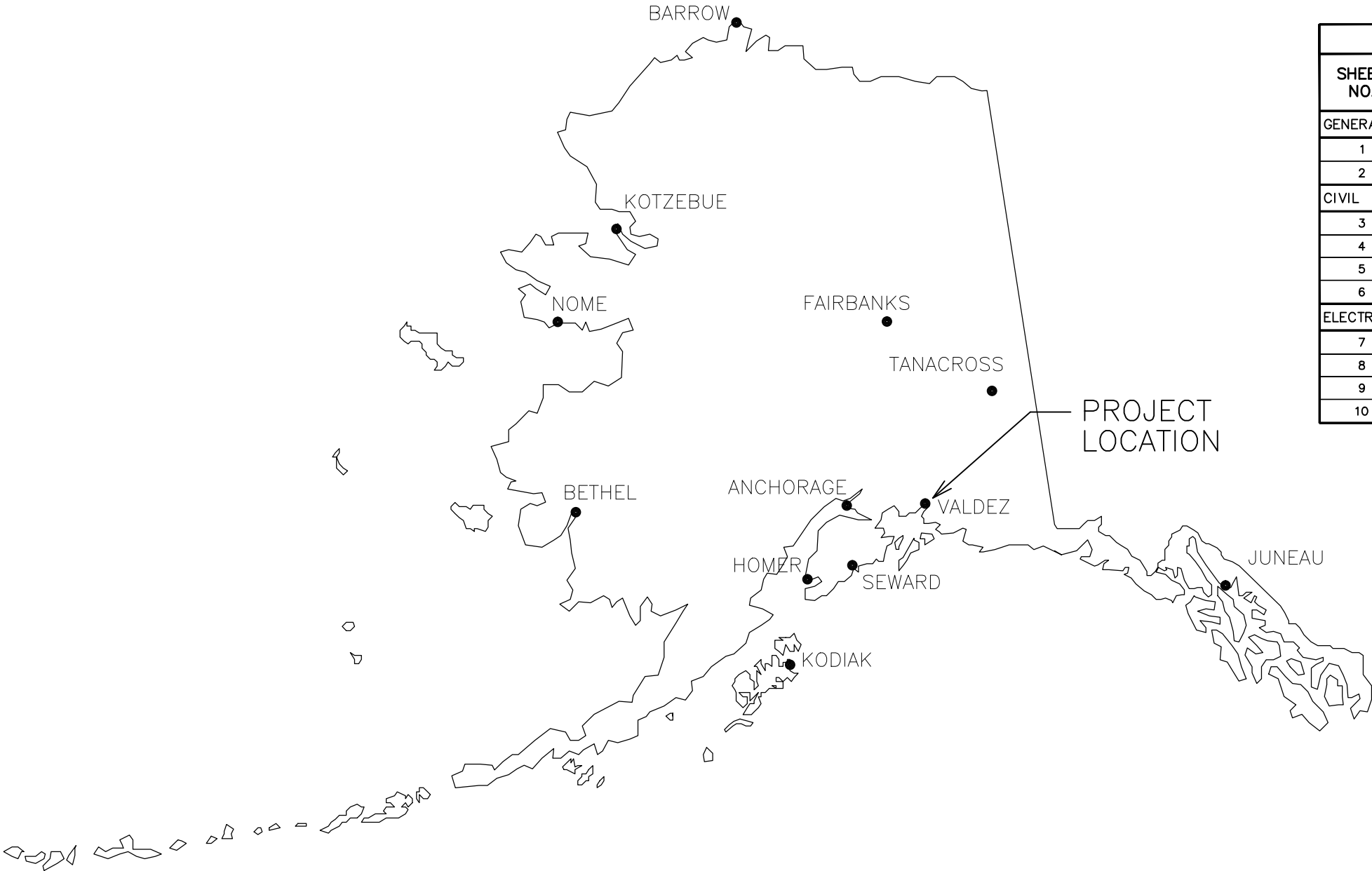


CITY OF VALDEZ, ALASKA

VCT GATE REPLACEMENT

SEPTEMBER 2017

PROJECT NO. 17-350-1708



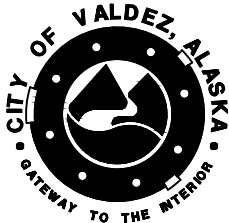
SHEET INDEX		
SHEET NO.	DESCRIPTION	WORK SCHEDULE
GENERAL		
1	COVER SHEET & SHEET INDEX	ALL
2	GENERAL NOTES, LEGEND & ABBREVIATIONS	ALL
CIVIL		
3	SITE PLAN	ALL
4	GATE DETAILS	ALL
5	FENCE DETAILS	ALL
6	FOUNDATION DETAILS	ALL
ELECTRICAL		
7	ELECTRICAL LEGEND	ALL
8	POWER ONE-LINE & PANEL SCHEDULE	ALL
9	ELECTRICAL PLAN	ALL
10	GATE OPERATOR WIRING DETAIL	ALL

PREPARED BY:



CRW
ENGINEERING GROUP, LLC

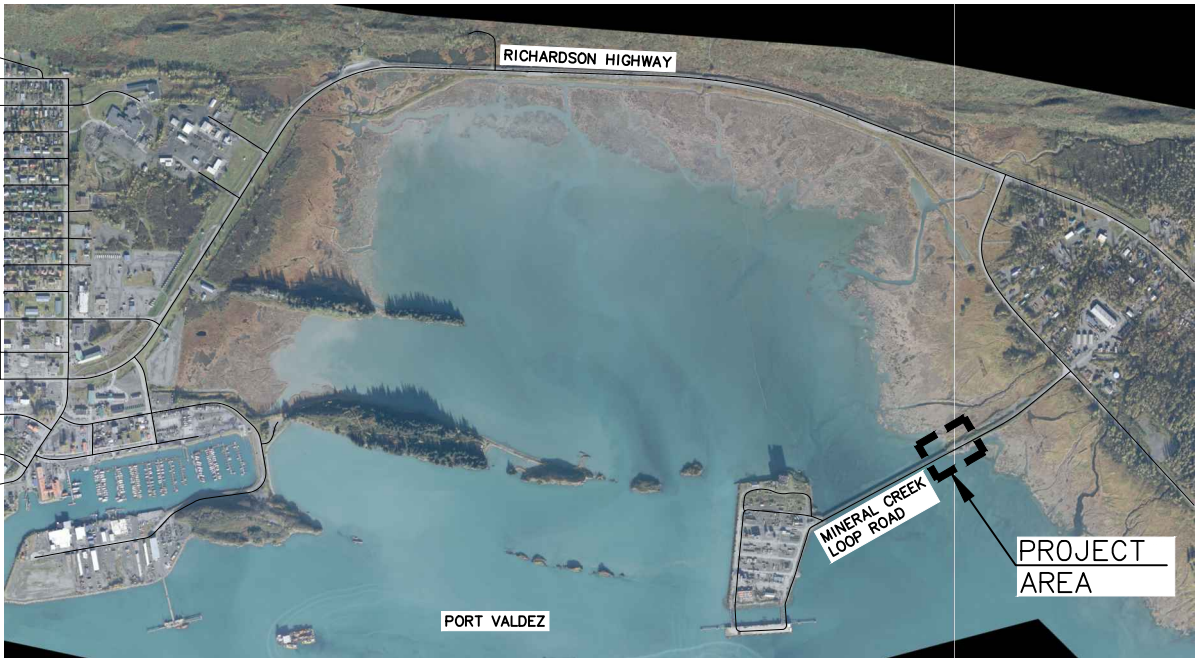
3940 ARCTIC BLVD. SUITE 300
ANCHORAGE, ALASKA 99503
PHONE: (907) 562-3252
#AECL882-AK



File: J:\JobsData\20306.00 Vct Gate Replacement\00 CADD\01 Working Set\00 General\20306.00 Legend_Index_Abbrev.dwg

GENERAL NOTES

- CAUTION!! UNDERGROUND UTILITIES EXIST WITHIN THE PROJECT AREA. NOT ALL UTILITIES ARE SHOWN ON THE PLAN. CONTRACTOR SHALL CALL FOR UTILITY LOCATES PRIOR TO BEGINNING CONSTRUCTION.
- ALL WORK SHALL BE IN ACCORDANCE WITH THE CITY OF VALDEZ STANDARD SPECIFICATIONS (CVSS) AND STANDARD DETAILS FOR STREETS, DRAINAGE, UTILITIES AND PARKS (APRIL 2003, AS AMENDED), AND THE SPECIAL PROVISIONS.
- PLEASE NOTE, NOT ALL UTILITIES ARE SHOWN ON THESE DRAWINGS. IT IS THE CONTRACTOR'S RESPONSIBILITY TO LOCATE EXISTING ABOVE GRADE AND BELOW GRADE UTILITIES AND PROTECT THEM DURING CONSTRUCTION. THE LOCATION OF THE EXISTING UTILITIES SHOWN IN THESE DRAWINGS ARE APPROXIMATE. THE CONTRACTOR SHALL VERIFY THE HORIZONTAL AND VERTICAL LOCATION OF ALL UTILITIES ENCOUNTERED AND RECORD THEIR LOCATION ON THE CONTRACT RECORD DRAWINGS. DISCREPANCIES SHALL BE BROUGHT TO THE IMMEDIATE ATTENTION OF THE ENGINEER. CONTRACTOR SHALL ADJUST ALIGNMENT OR GRADE OF PROPOSED PIPING AS NECESSARY TO AVOID CONFLICTS WITH EXISTING UTILITIES.
- THE CONTRACTOR SHALL OBTAIN ALL NECESSARY PERMITS PRIOR TO BEGINNING CONSTRUCTION. THE PERMITS SHALL BE MAINTAINED ON THE PROJECT SITE.
- ALL WORK IN CLOSE PROXIMITY TO EXISTING OVERHEAD TELEPHONE AND ELECTRIC UTILITIES SHALL COMPLY WITH APPLICABLE FEDERAL, STATE AND LOCAL STATUTES, CODES AND GUIDELINES AND THE CLEARANCE REQUIREMENTS OF THE SERVING UTILITY.
- ALL WORK SHALL BE PERFORMED WITHIN PUBLIC RIGHT-OF-WAY, PUBLIC USE EASEMENT, SLOPE EASEMENT, DRAINAGE EASEMENT, OR TEMPORARY CONSTRUCTION PERMIT AREA. ALL DISTURBED PROPERTY BEYOND THE SLOPE LIMITS SHALL BE RESTORED TO ORIGINAL CONDITION, UNLESS OTHERWISE NOTED.
- ALL WORK AND EQUIPMENT REQUIRED FOR REMOVING ANY LITTER OR DEBRIS WITHIN THE PROJECT LIMITS SHALL BE CONSIDERED INCIDENTAL TO THE PROJECT AND NO SEPARATE PAYMENT WILL BE MADE.
- CONTRACTOR SHALL PROVIDE A RECORD DRAWING IN ACCORDANCE WITH THE REQUIREMENTS OF CVSS. THE CONTRACTOR SHALL SUBMIT RECORD SURVEY NOTES WITH THE RECORD DRAWINGS.
- CONTRACTOR SHALL RESTORE DISTURBED PROPERTY TO PRE-CONSTRUCTION CONDITIONS, UNLESS OTHERWISE DIRECTED BY ENGINEER. PAYMENT FOR RESTORING DISTURBED PROPERTY SHALL BE CONSIDERED INCIDENTAL TO THE PROJECT AND NO SEPARATE PAYMENT SHALL BE MADE.
- WATER RESULTING FROM THE CONTRACTOR'S DEWATERING EFFORT MAY NOT BE PUMPED OR OTHERWISE DIVERTED INTO EXISTING STORM DRAINS UNLESS REQUIRED PERMITS INCLUDING, BUT NOT LIMITED TO, THE ALASKA DEPARTMENT OF ENVIRONMENTAL CONSERVATION ARE OBTAINED BY THE CONTRACTOR. UNDER NO CIRCUMSTANCES WILL THE CONTRACTOR BE ALLOWED TO DIVERT WATER FROM EXCAVATION ONTO ROADWAYS. THE CONTRACTOR SHALL PROVIDE DISPOSAL SITE FOR EXCESS WATER AND SHALL BE RESPONSIBLE FOR SECURING ALL NECESSARY PERMITS AND APPROVALS. THE CONTRACTOR SHALL PROVIDE COPIES OF PERMITS AND APPROVALS TO THE ENGINEER PRIOR TO BEGINNING DEWATERING.
- ANY EXISTING SURVEY MONUMENTATION DISTURBED BY CONTRACTOR OPERATIONS SHALL BE REPLACED AT CONTRACTOR'S EXPENSE BY SURVEYOR LICENSED TO PRACTICE IN THE STATE OF ALASKA.
- CONTRACTOR SHALL REPLACE ALL PAVEMENT DAMAGED BY CONTRACTOR'S OPERATIONS WITH A MINIMUM OF 2" ASPHALT.
- CONTRACTOR SHALL APPLY TACK COAT TO THE SAW CUT ASPHALT FACE AND FACE CONCRETE PRIOR TO PAVING. TACK COAT SHALL BE INCIDENTAL TO THE PROJECT.
- IMPROVEMENT LIMITS ARE APPROXIMATE AND MAY REQUIRE ADJUSTMENT IN THE FIELD DURING CONSTRUCTION, AT THE DISCRETION OF THE ENGINEER.



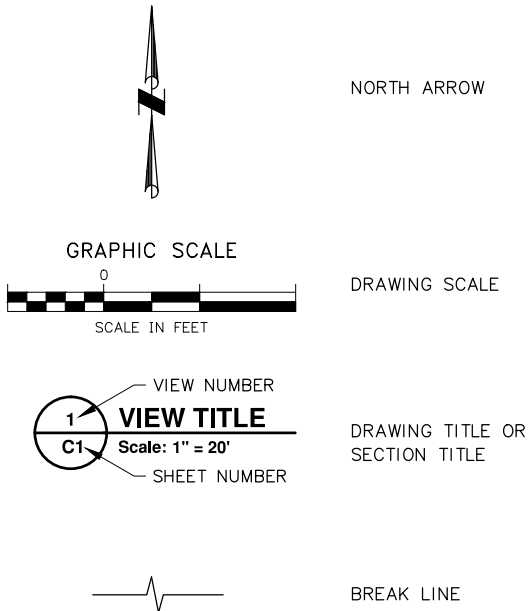
LEGEND – PLAN		
PROPOSED (P)	EXISTING (E)	DESCRIPTION
	— — — —	RIGHT OF WAY
	— — — —	PROPERTY LINE
	— — — —	EASEMENT LINE
— — — —		ROADWAY CENTERLINE
=====	=====	EDGE OF PAVEMENT
	⊗	WATER VALVE
	⊗	WATER KEYBOX
	⊗	FIRE HYDRANT
	⊗	SANITARY SEWER MANHOLE
	⊗	SANITARY SEWER CLEANOUT
	□ U.E.	ELECTRIC VAULT
	□ F.O.	FIBER OPTIC VAULT
	□ U.C.	UTILITY CABLE PEDESTAL
	□ U.T.	UTILITY TELEPHONE PEDESTAL
	⊗	LOAD CENTER
	⊗	UTILITY POLE
— X — X —		FENCE
	←	GUY ANCHOR
	☆	LIGHT POLE
	⊗	SIGN
	~~~~~	TREE OR BRUSH LINE
— FO —		FIBER OPTICS LINE
— OHE —		OVERHEAD ELECTRIC LINE
— E —		UNDERGROUND ELECTRIC LINE
— T —		UNDERGROUND TELEPHONE LINE
— G —		UNDERGROUND GAS LINE
— C —		UNDERGROUND CABLE LINE
— S —		UNDERGROUND SANITARY SEWER LINE
— W —		UNDERGROUND WATER LINE

## ABBREVIATIONS

AC = ASPHALT CONCRETE  
ADOT&PF = ALASKA DEPARTMENT OF TRANSPORTATION & PUBLIC FACILITIES  
APX./APPROX = APPROXIMATE  
BM = BENCH MARK  
BOC = BACK OF CURB  
CL = CENTERLINE  
DIA = DIAMETER  
E = EAST  
ELEC = ELECTRICAL  
ELEV. = ELEVATION  
EOG = EDGE OF GRAVEL  
EOP = EDGE OF PAVEMENT  
ESMT = EASEMENT  
FG = FINISHED GRADE (ELEV.)  
FT = FEET  
F&I = FURNISH & INSTALL  
GB = GRADE BREAK  
HWY = HIGHWAY  
I.A.W = IN ACCORDANCE WITH  
LF = LINEAR FEET  
LT = LEFT  
MAX = MAXIMUM  
MFR = MANUFACTURER  
MIN = MINIMUM  
N = NORTH  
NO. = NUMBER  
N.T.S. = NOT TO SCALE  
N/A = NOT APPLICABLE  
O.C. = ON CENTER  
OCEW – ON CENTER, EACH WAY  
OG = ORIGINAL GROUND (ELEV.)  
PC = POINT OF CURVATURE  
PCC = PORTLAND CEMENT CONCRETE  
PL = PROPERTY LINE  
PP = POWER POLE  
R = RADIUS (LENGTH)

R&R = REMOVE AND REPLACE  
RT = RIGHT  
R/W OR ROW = RIGHT-OF-WAY  
S = SOUTH  
SD = STORM DRAIN  
SF = SQUARE FEET  
STD = STANDARD  
T = TANGENT (LENGTH)  
TELE = TELEPHONE  
TV = TELEVISION  
TYP = TYPICAL  
U/G = UNDER GROUND  
W = WEST

## REFERENCE



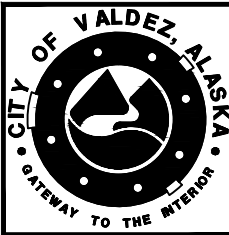
CALL BEFORE YOU DIG!!!	
Locate Call Center of Alaska, Inc.	
Anchorage Area	278-3121
Statewide	800-478-3121
who will notify the following:	
• Alaska DOT/PF Anchorage Streetlights	• Homer Electric Association
• Alaska Fiber Star	• Interior Telephone Company
• Alaska Native Center	• Kenai Pipeline Services
• Alyeska Cable Company	• Marathon Oil Company
• Anchorage Municipal School District	• Matanuska Electric Association
• Anchorage Public Works Department	• Matanuska Telephone Association
• Anchorage Water and Wastewater Utility	• Mukluk Telephone Company
• AT&T Alascom	• Municipal Light and Power
• ATU Telecommunications	• Phillips Petroleum Pipeline
• Chugach Electric Association	• PTI Communications
• Doss Aviation	• Rogers Cablesystems
• Enstar Natural Gas	• Signature Flight Support
• Eyecom, Inc.	• Tesoro Petroleum Services
• GCI Communications	• UNOCAL Petroleum
Alaska Railroad	265-2520
Military Fuel Lines	552-3760
State Storm Drains	333-2411



3940 ARCTIC BLVD. SUITE 300  
ANCHORAGE, ALASKA 99503  
PHONE: (907) 562-3252  
#AECL882-AK

REVISION			
REV	DATE	DESCRIPTION	BY

REVISION			
REV	DATE	DESCRIPTION	BY

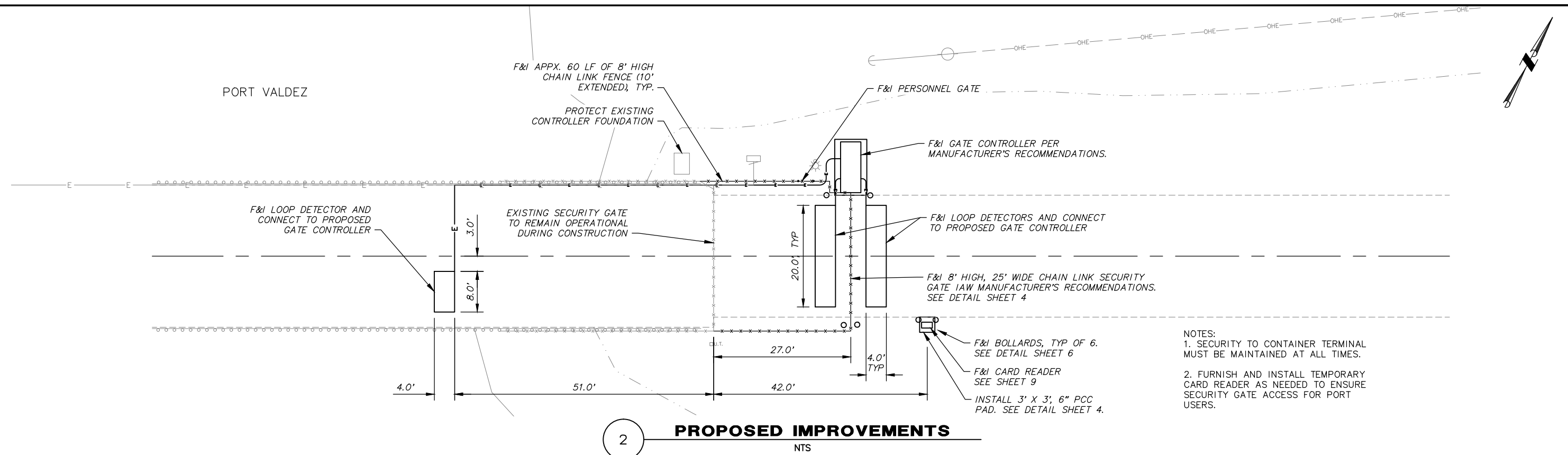
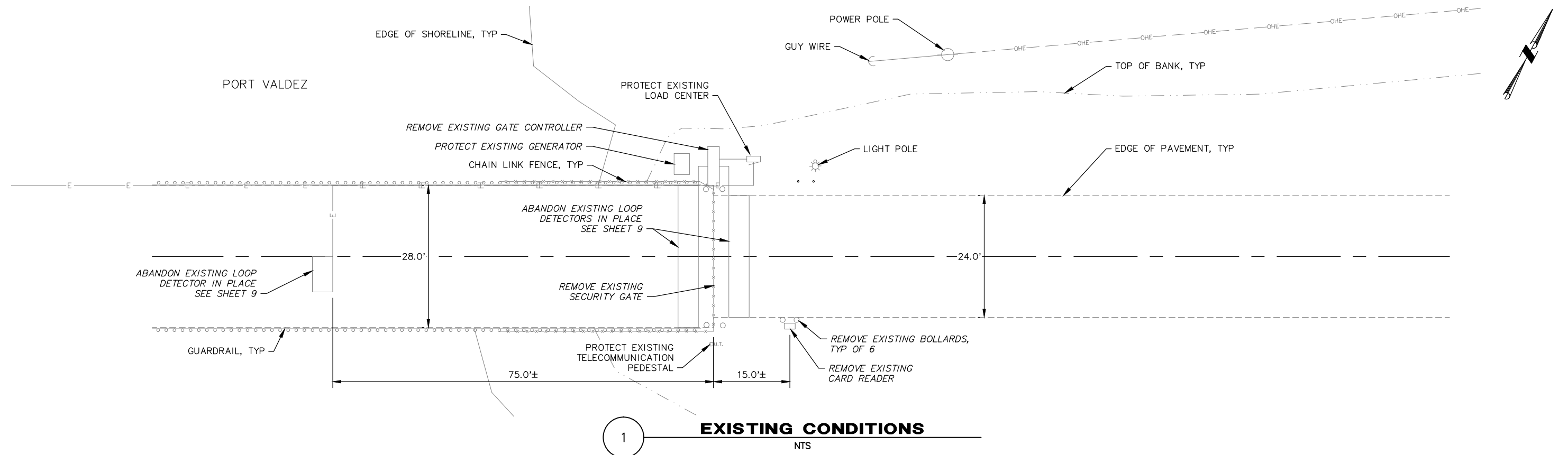


SCALE	HOR. N/A VER. N/A
DESIGNED BY	CB
DRAWN BY	CB
CHECKED BY	RLC
APPROVED BY	PB

PROJECT NO: 17-350-1708	CITY OF VALDEZ, ALASKA VCT GATE REPLACEMENT	SCHEDULE ALL
GENERAL NOTES, LEGEND & ABBREVIATIONS		
STATUS: FINAL	DATE: SEPTEMBER 2017	

PROJECT NO.	20306.00
CITY GRID	
WATER GRID	
SEWER GRID	
SHEET	2
OF	10

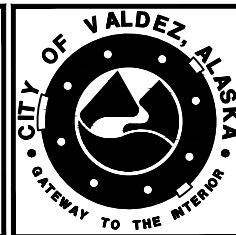
File: J:\JobsData\20306.00 Vct Gate Replacement\00 CADD\01 Working Set\01 Civil\20306.00 Site Plan.dwg PLOT DATE: 9/6/2017 2:46 PM



- NOTES:
1. SECURITY TO CONTAINER TERMINAL MUST BE MAINTAINED AT ALL TIMES.
  2. FURNISH AND INSTALL TEMPORARY CARD READER AS NEEDED TO ENSURE SECURITY GATE ACCESS FOR PORT USERS.



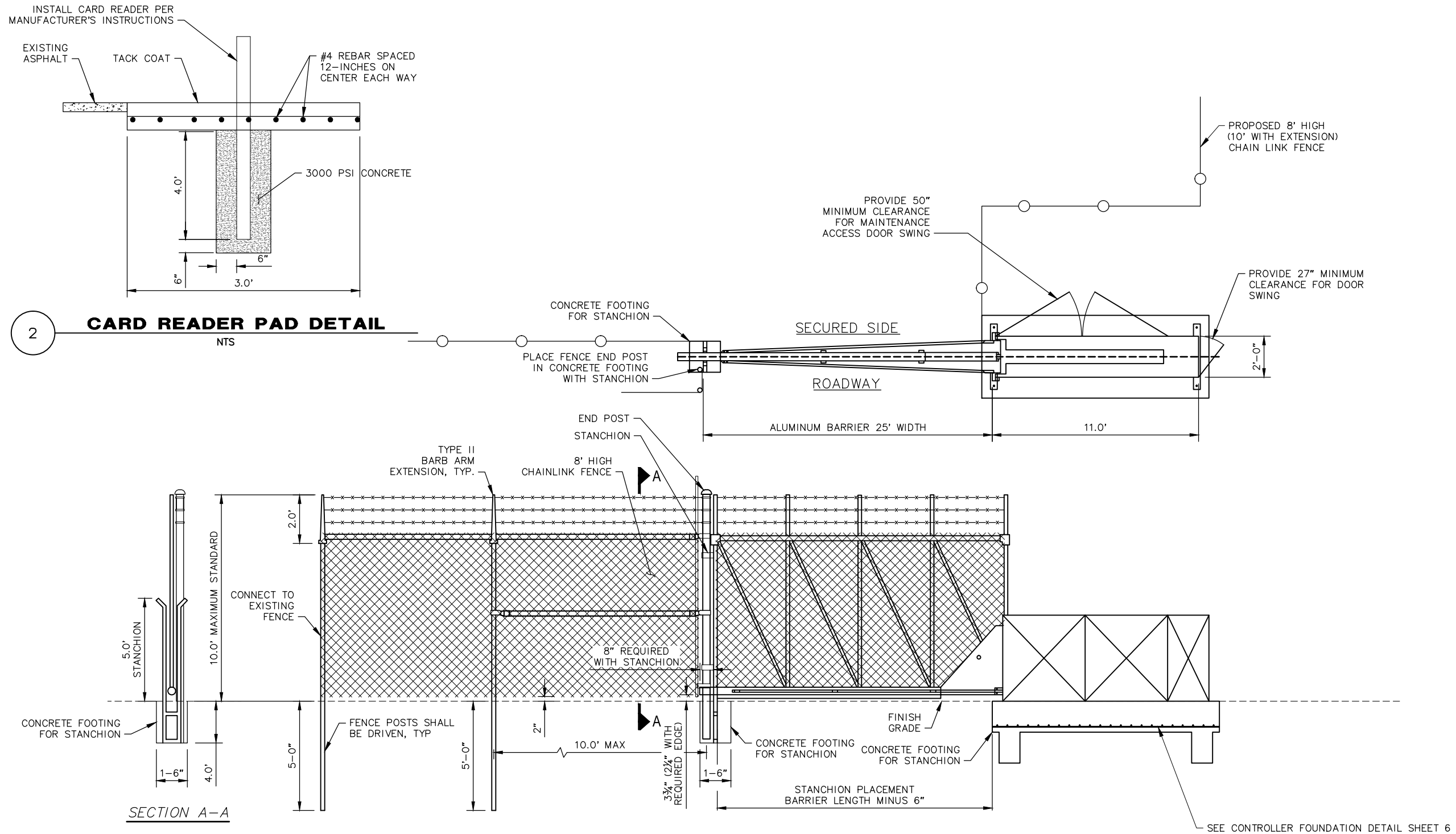
REVISION				REVISION			
REV	DATE	DESCRIPTION	BY	REV	DATE	DESCRIPTION	BY



SCALE	HOR. 1"=10'	VER. N/A
DESIGNED BY	CB	
DRAWN BY	CB	
CHECKED BY	RLC	
APPROVED BY	PB	

PROJECT NO: 17-350-1708	CITY OF VALDEZ, ALASKA VCT GATE REPLACEMENT	SCHEDULE ALL	PROJECT NO. 20306.00
SITE PLAN			CITY GRID
STATUS: FINAL			WATER GRID
DATE: SEPTEMBER 2017			SEWER GRID
			SHEET OF
			3 10

File: J:\JobsData\20306.00 Vct Gate Replacement\00 CADD\01 Working Set\01 Civil\20306.00 Details.dwg PLOT DATE: 9/6/2017 2:46 PM



1

**SINGLE TILTING GATE**

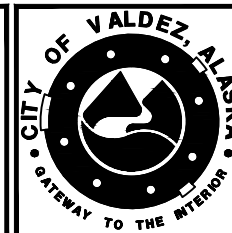
NTS

GATE DESIGN DATA			
MANUFACTURER	HEIGHT	HEIGHT EXTENDED	WIND LOAD
TILTAWAY	8'-0"	10'-0"	150 MPH



REVISION			
REV	DATE	DESCRIPTION	BY

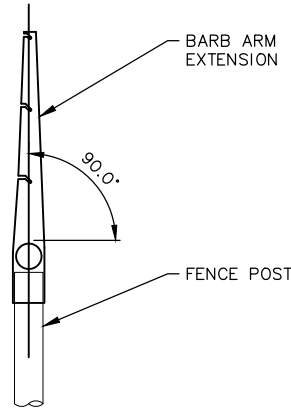
REVISION			
REV	DATE	DESCRIPTION	BY



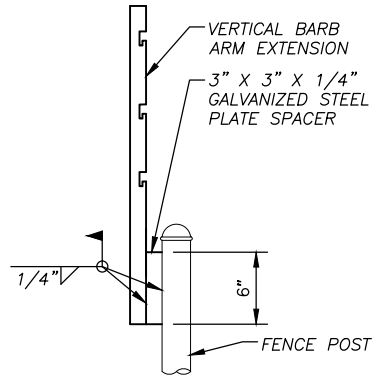
SCALE	HOR. N/A VER. N/A
DESIGNED BY	CB
DRAWN BY	CB
CHECKED BY	RLC
APPROVED BY	PB

PROJECT NO: 17-350-1708	CITY OF VALDEZ, ALASKA VCT GATE REPLACEMENT	SCHEDULE ALL	PROJECT NO. 20306.00
GATE DETAILS			CITY GRID
			WATER GRID
			SEWER GRID
STATUS: FINAL	DATE: SEPTEMBER 2017	SHEET	4
		OF	10

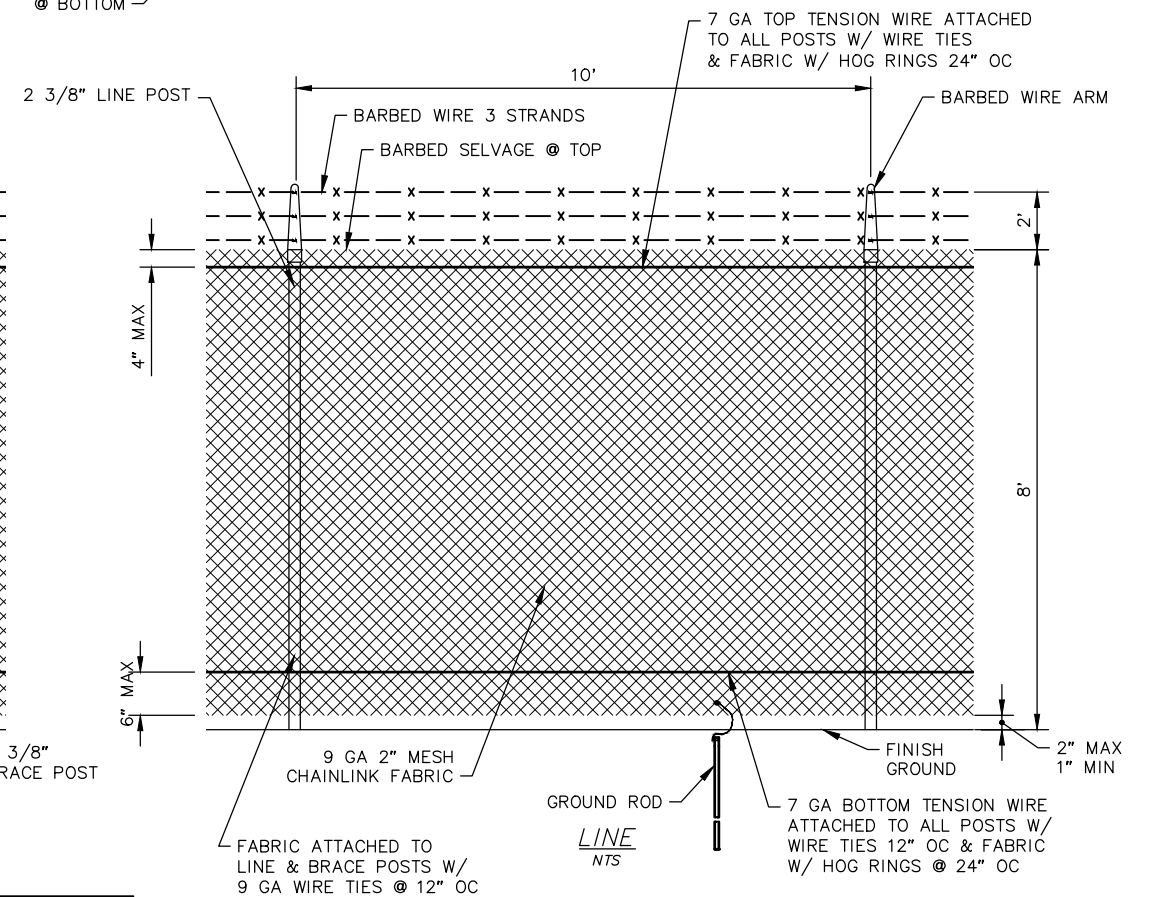
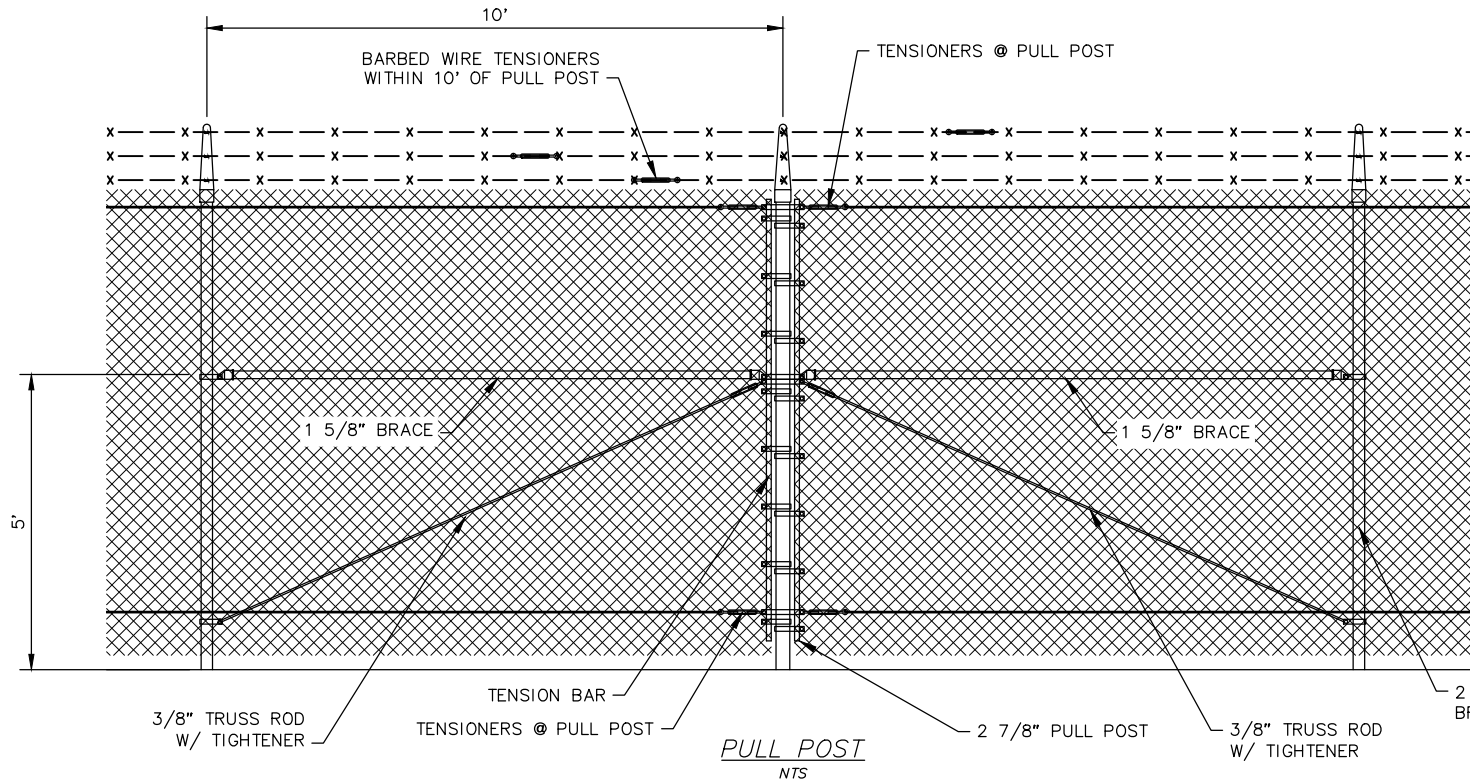
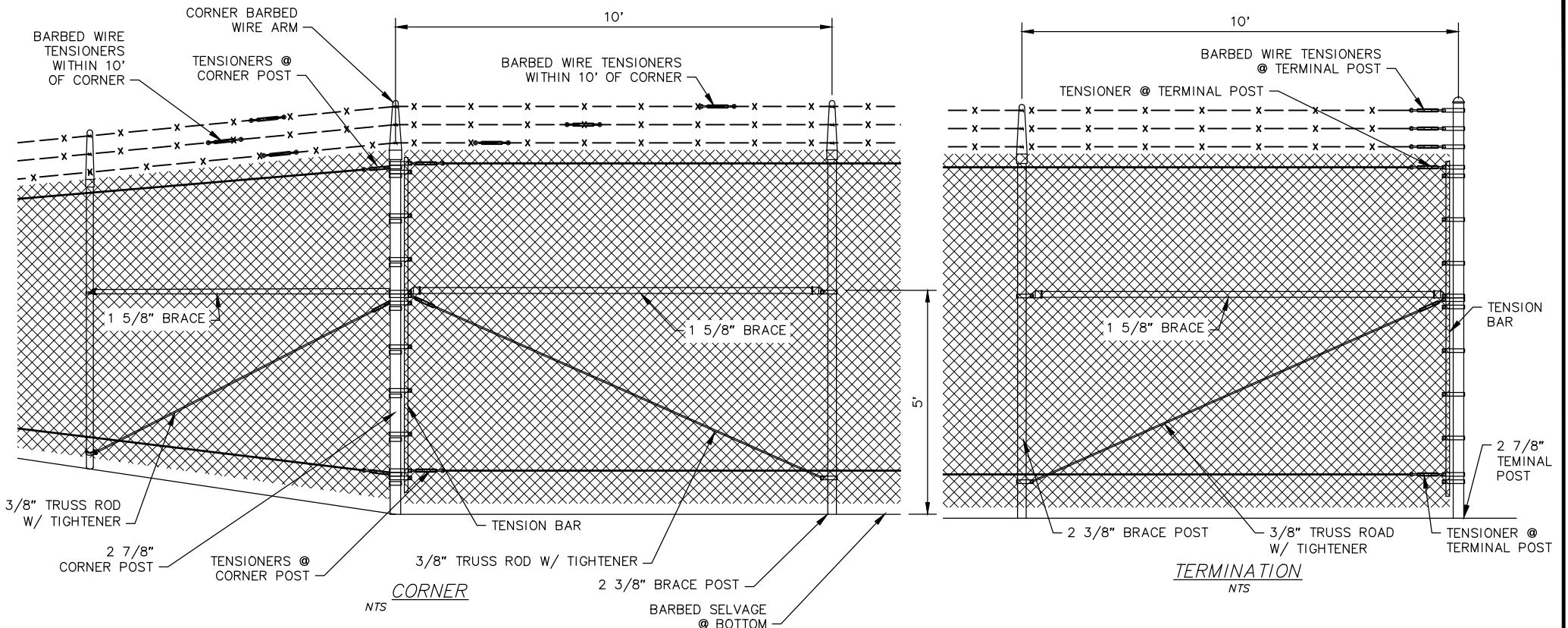
File: J:\JobsData\20306.00 Vct Gate Replacement\00 CADD\01 Working Set\01 Civil\20306.00 Details.dwg PLOT DATE: 9/6/2017 2:46 PM



**TYPE II BARB ARM EXTENSION**  
NTS



**VEHICLE GATE, TYPE III BARB ARM EXTENSION**  
NTS



**GENERAL FENCE NOTES:**

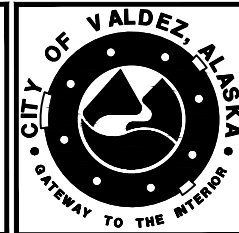
1. ALL FABRIC TERMINATIONS SHALL BE MADE WITH TENSION BARS AND BANDS.
2. ALL FENCE COMPONENTS SHALL BE ASSEMBLED WITH CORRECTLY SIZED BANDS, CAPS, AND FIXTURES.
3. WELDED COMPONENTS SHALL BE HOT DIPPED GALVANIZED AFTER FABRICATION.
4. ALL HARDWARE SHALL BE MALLEABLE AND HOT DIPPED GALVANIZED.
5. INSTALL POST CAPS ON ALL POSTS AND UPRIGHTS WITHOUT BARBED WIRE ARMS.



3940 ARCTIC BLVD. SUITE 300  
ANCHORAGE, ALASKA 99503  
PHONE: (907) 562-3252  
#AECL882-AK

REVISION			
REV	DATE	DESCRIPTION	BY

REVISION			
REV	DATE	DESCRIPTION	BY



SCALE	HOR. N/A VER. N/A
DESIGNED BY	CB
DRAWN BY	CB
CHECKED BY	RLC
APPROVED BY	PB

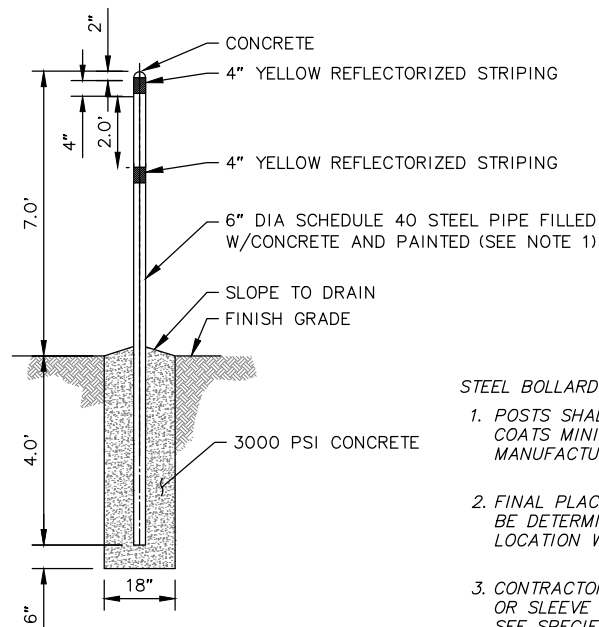
PROJECT NO: 17-350-1708
STATUS: FINAL

CITY OF VALDEZ, ALASKA  
VCT GATE REPLACEMENT  
**FENCE DETAILS**

SCHEDULE ALL
DATE: SEPTEMBER 2017

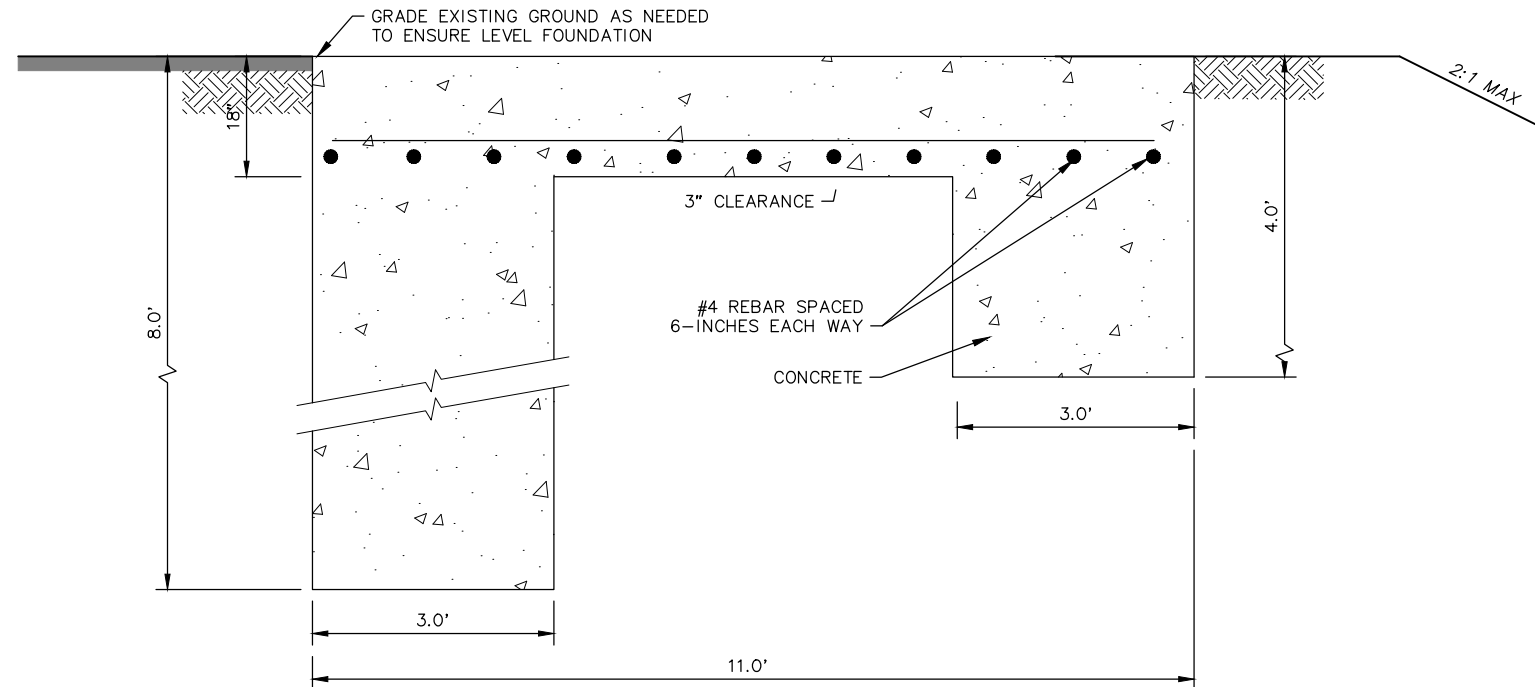
PROJECT NO. <b>20306.00</b>
CITY GRID
WATER GRID
SEWER GRID
SHEET OF <b>5</b> <b>10</b>



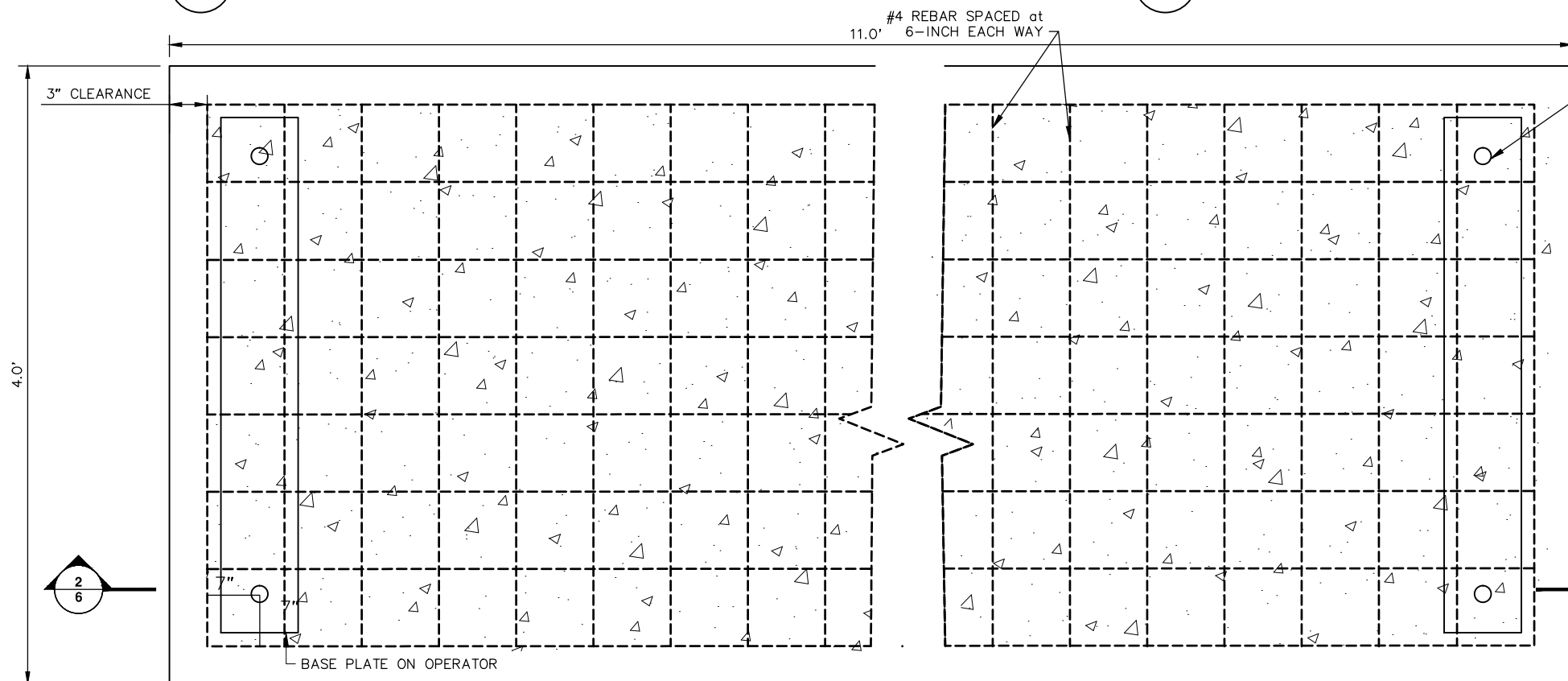


- STEEL BOLLARD NOTES:**
1. POSTS SHALL BE PRIMED AND RECEIVE TWO COATS MINIMUM OF POWDER COAT PAINT I.A.W. MANUFACTURER'S RECOMMENDATIONS.
  2. FINAL PLACEMENT OF STEEL BOLLARDS SHALL BE DETERMINED IN FIELD. COORDINATE LOCATION WITH VALDEZ REPRESENTATIVE.
  3. CONTRACTOR MAY OPT TO USE A GUARD COVER OR SLEEVE IN LIEU OF PAINT FOR BOLLARD. SEE SPECIFICATION FOR MORE DETAILS.

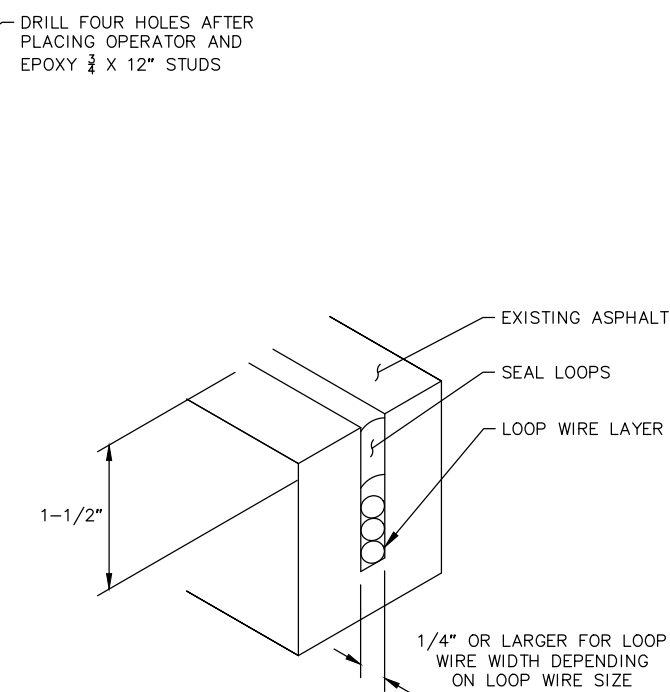
1 **BOLLARD DETAIL**  
NTS



2 **GATE OPERATOR FOUNDATION SECTION VIEW**  
NTS



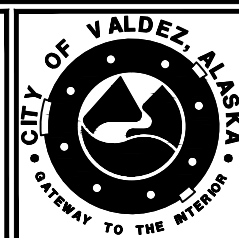
3 **GATE OPERATOR FOUNDATION DETAIL**  
NTS



4 **LOOP DETECTOR DETAIL**  
NTS

REVISION			
REV	DATE	DESCRIPTION	BY

REVISION			
REV	DATE	DESCRIPTION	BY



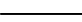

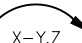
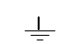
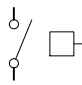






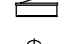
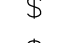
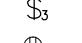



SCALE	HOR. N/A VER. N/A
DESIGNED BY	CB
DRAWN BY	CB
CHECKED BY	RLC
APPROVED BY	PB

PROJECT NO: 17-350-1708	CITY OF VALDEZ, ALASKA VCT GATE REPLACEMENT	SCHEDULE ALL
FOUNDATION DETAILS		
STATUS: FINAL	DATE: SEPTEMBER 2017	PROJECT NO. 20306.00
		CITY GRID
		WATER GRID
		SEWER GRID
		SHEET 6
		OF 10

File: J:\JobsData\20306.00 Vct Gate Replacement\00 CADD\01 Working_Set\03 Electrical\20306.00 Electrical Legend.dwg PLOT DATE: 9/6/2017 2:47 PM

LEGEND

THIS LIST IS NOT INTENDED TO BE ALL-INCLUSIVE. ADDITIONAL SYMBOLS AND ABBREVIATIONS ARE DEFINED AS USED ON A SHEET-BY-SHEET BASIS.

	ELECTRICAL CONDUIT (BELOW GRADE)
	CONDUIT - METALLIC UNLESS OTHERWISE NOTED, SIZE AS SHOWN/NOTED
	HOMERUN TO PANEL "X", CIRCUITS NO. Y AND Z CONDUIT RUNS NOT DEFINED ARE 1/2" C with 3#12.
	GROUND
	DISCONNECT SWITCH
	LIQUID-TIGHT FLEXIBLE METALLIC CONDUIT
	MOTOR, HP AS NOTED, OR "F" (LESS THAN 1/2 hp)
	SPECIAL OUTLET, TYPE AS SHOWN
	JUNCTION BOX OR FITTING
	HP RATED SWITCH, SPST, 20A, UNLESS OTHERWISE NOTED
	PANELBOARD, LOAD CENTER, SUBSTATION
	SINGLE POLE SWITCH
	THREE-WAY SWITCH
	120V DUPLEX RECEPTACLE, NEMA
	120V QUADUPLEX RECEPTACLE, NEMA CONFIGURATION 5 - 20R
	MOLDED CASE CIRCUIT BREAKER, X = AMPERE RATING, Y = NO. OF POLES
	INSTRUMENT TAG / CALLOUT

ABBREVIATIONS

(E)	EXISTING
A	AMPERE
AFF	ABOVE FINISH FLOOR
ASD	ADJUSTABLE SPEED DRIVE
bcu, BCU	BARE COPPER
c	CONDUCTOR
C	CONDUIT
C.T.	CURRENT TRANSFORMER (UTILITY)
DWG	DRAWING
EMT	ELECTRICAL MECHANICAL TUBING
EQ	EQUIPMENT
G	GROUND CONDUCTOR
GFI	GROUND FAULT INTERRUPTING
GRC	GALVANIZED RIGID (STEEL) CONDUIT
H	HOT CONDUCTOR
HOA	HAND OFF AUTO
HP	HORSEPOWER
HPS	HIGH PRESSURE SODIUM
IMC	INTERMEDIATE METAL CONDUIT
KVA	KILO-VOLT-AMPERES
LC	LIGHTING CONTACTOR
LCP	LOCAL CONTROL PANEL
LFMC	LIQUID TIGHT FLEXIBLE CONDUIT (METALLIC)
LTG	LIGHTING
LV	LOW VOLTAGE
MCM	THOUSAND CIRCULAR MILLS
MDP	MAIN DISTRIBUTION PANEL
MECH	MECHANICAL
N	NEUTRAL CONDUCTOR
NEC	NATIONAL ELECTRICAL CODE
NFPA	NATIONAL FIRE PROTECTION ASSOCIATION
NIC	NOT IN CONTRACT
P	POLE
PC	PHOTOCELL
RCP	RECEPTACLE
RM	ROOM
RMC	RIGID METAL CONDUIT / See also GRC
RVSS	REDUCED VOLTAGE SOLID STATE
TM	TIMER
TWSH	TWISTED/SHIELDED PAIR
TYP	TYPICAL
UON	UNLESS OTHERWISE NOTED
V	VOLTS
WP	WATERPROOF
WTP	WATER TREATMENT PLANT
XFMR	TRANSFORMER

PROJECT ELECTRICAL SCOPE

THIS PROJECT INCLUDES THE FOLLOWING MAJOR TASKS:

DEMOLITION:

DISCONNECT AND REMOVE EXISTING GATE OPERATOR.

DISCONNECT AND SALVAGE EXISTING KEYPADS, CARD READERS, AND ELECTRICAL GATE ACCESSORIES

DISCONNECT AND ABANDON-IN-PLACE EXISTING LOOP DETECTORS. CUT EACH LOOP A MINIMUM OF 2 TIMES, PERPENDICULAR TO LOOP TRAVEL DIRECTION BEFORE ABANDONING TO ENSURE LOSS OF FUNCTION.

PROPOSED:

PROVIDE NEW GATE OPERATOR.

PROVIDE NEW CARD READER AND ASSOCIATED POWER/DATA CIRCUITS.

PROVIDE THREE LOOP DETECTORS FOR NEW GATE SETUP: (2) INTERRUPT LOOPS AT THE GATE FOR VEHICLE-AVOIDANCE, (1) EXIT LOOP 75' PRIOR TO GATE (EXIT-SIDE).

GATE OPERATION, ACCESS, AND FUNCTIONALITY SHALL BE MAINTAINED AT ALL TIMES DURING THIS PROJECT.

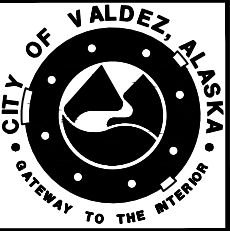
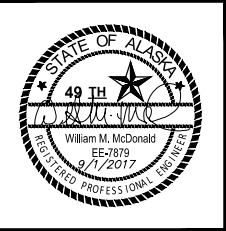
EXISTING UTILITIES, TELECOMMUNICATION DEVICES/PEDESTALS, AND GENERATOR EQUIPMENT TO BE PROTECTED IN PLACE.



**CRW**  
ENGINEERING GROUP, LLC

3940 ARCTIC BLVD. SUITE 300  
ANCHORAGE, ALASKA 99503  
PHONE: (907) 562-3252  
FAX: (907) 561-2273

REVISION				REVISION			
REV	DATE	DESCRIPTION	BY	REV	DATE	DESCRIPTION	BY



SCALE
HOR. N/A
VER. N/A
DESIGNED BY
JJ
DRAWN BY
JJ
CHECKED BY
WMM
APPROVED BY
WMM

PROJECT NO: 17-350-1708

CITY OF VALDEZ, ALASKA  
VCT GATE REPLACEMENT

ELECTRICAL LEGEND

STATUS: FINAL

DATE: SEPTEMBER 2017

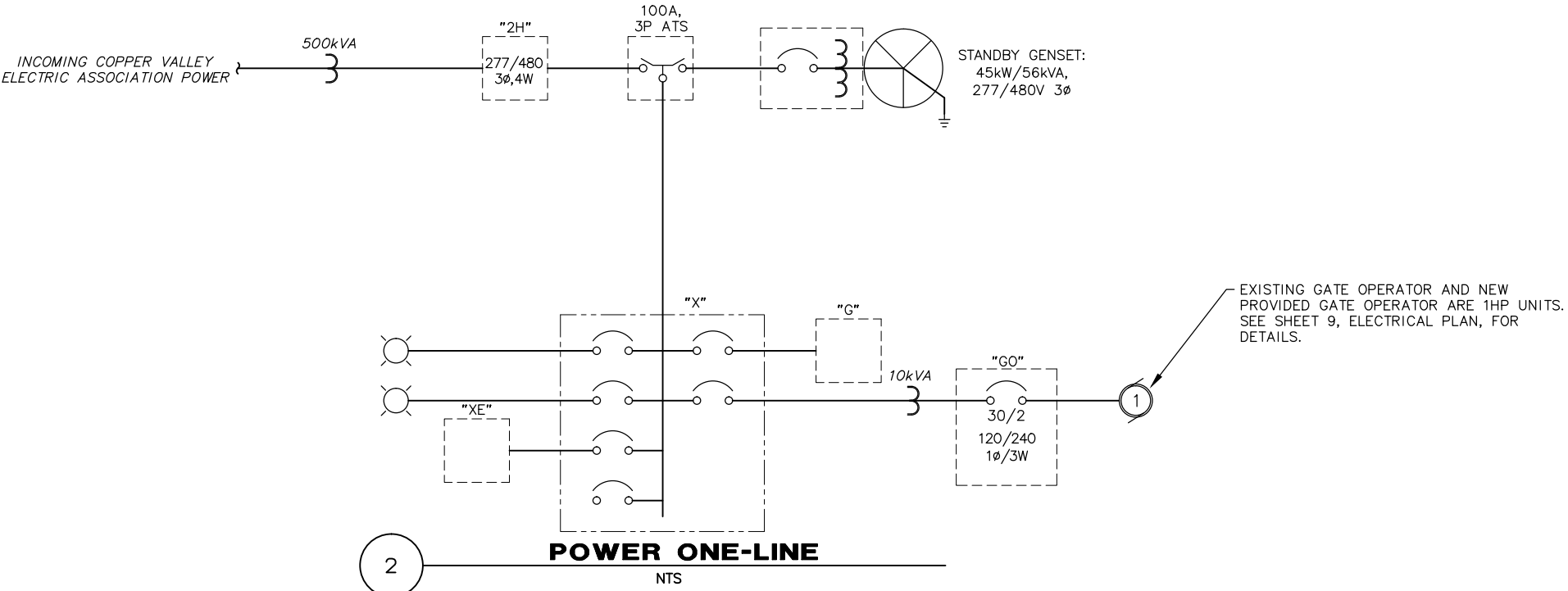
PROJECT NO.	20306.00
CITY GRID	
WATER GRID	
SEWER GRID	
SHEET	7
OF	10

File: J:\JobsData\20306.00 Vct Gate Replacement\00 CADD\01 Working Set\03 Electrical\20306.00 Electrical Plan.dwg PLOT DATE: 9/6/2017 2:47 PM

NO ADDITIONAL LOAD WITH NEW PROVIDED  
1HP, SINGLE-PHASE 220VAC, TILT-A-WAY  
HYJD-B GATE OPERATOR.

PANEL 'GO' SCHEDULE									
SQUARE D #MPZB10S40FSS, POST-MOUNTED				120/240V			1 $\phi$ , 3 Wire		10,000 AIC
Served From: PANEL 'X'				60A MAIN					NEMA 3R
POLE	AMP	LOAD DESCRIPTION	kVA	L1	L2	kVA	LOAD DESCRIPTION	AMP	POLE
1	30/2	GATE OPERATOR	1.0	1.1		0.1	GATE OPERATOR LIGHT	20/1	2
3			1.0		1.0	0.0	SPARE	—	4
5	20/1	SPARE	0.0	0.0		0.0		—	6
7	—		0.0		0.0	0.0		—	8
9	—		0.0	0.0		0.0		—	10
				1.1	1.0	TOTAL kVA = 2.1			
				TOTAL AMPS @ 240V = 8.6					

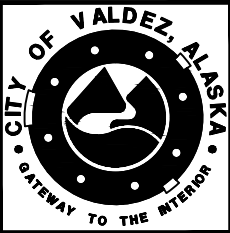
1 **GATE PANEL 'GO' SCHEDULE**  
NTS



NOTE: POWER ONE-LINE DEPICTS EXISTING ASBUILT  
CONDITIONS AND IS INTENDED FOR INFORMATIONAL  
PURPOSES ONLY.



REVISION				REVISION			
REV	DATE	DESCRIPTION	BY	REV	DATE	DESCRIPTION	BY



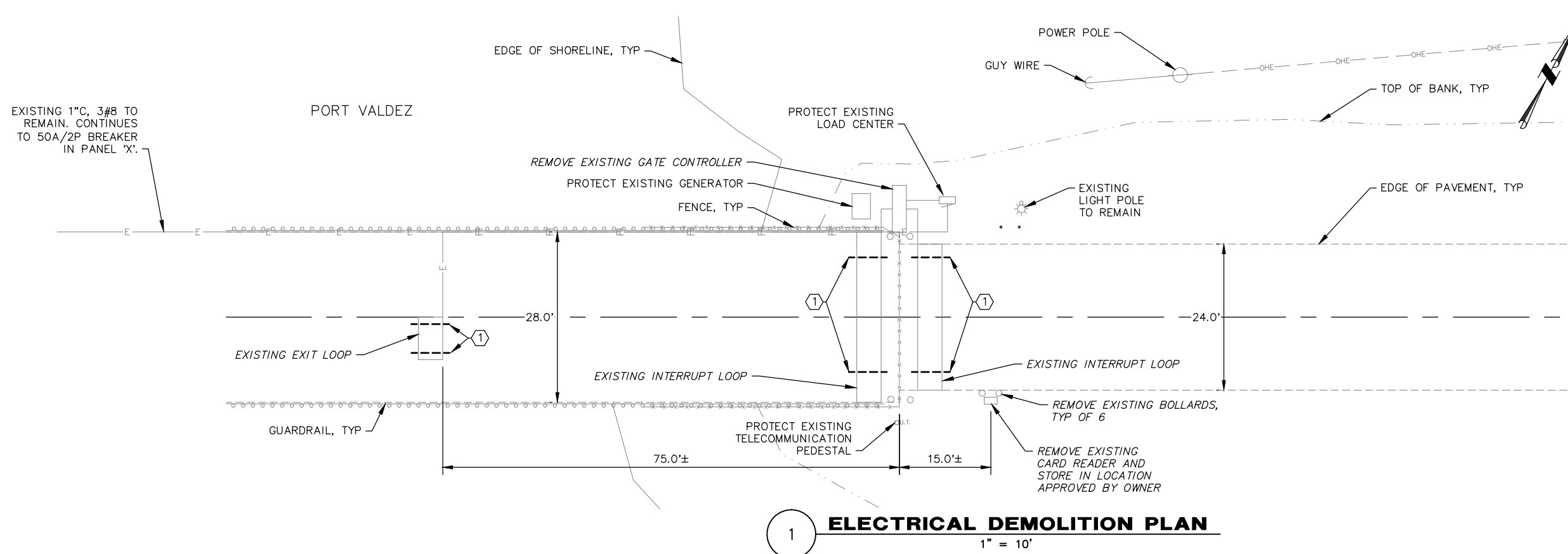
SCALE HOR. 1"=10' VER. N/A
DESIGNED BY JJ
DRAWN BY JJ
CHECKED BY WMM
APPROVED BY WMM

PROJECT NO: 17-350-1708	CITY OF VALDEZ, ALASKA VCT GATE REPLACEMENT	SCHEDULE ALL
<b>POWER ONE-LINE &amp; PANEL SCHEDULE</b>		
STATUS: FINAL	DATE: SEPTEMBER 2017	

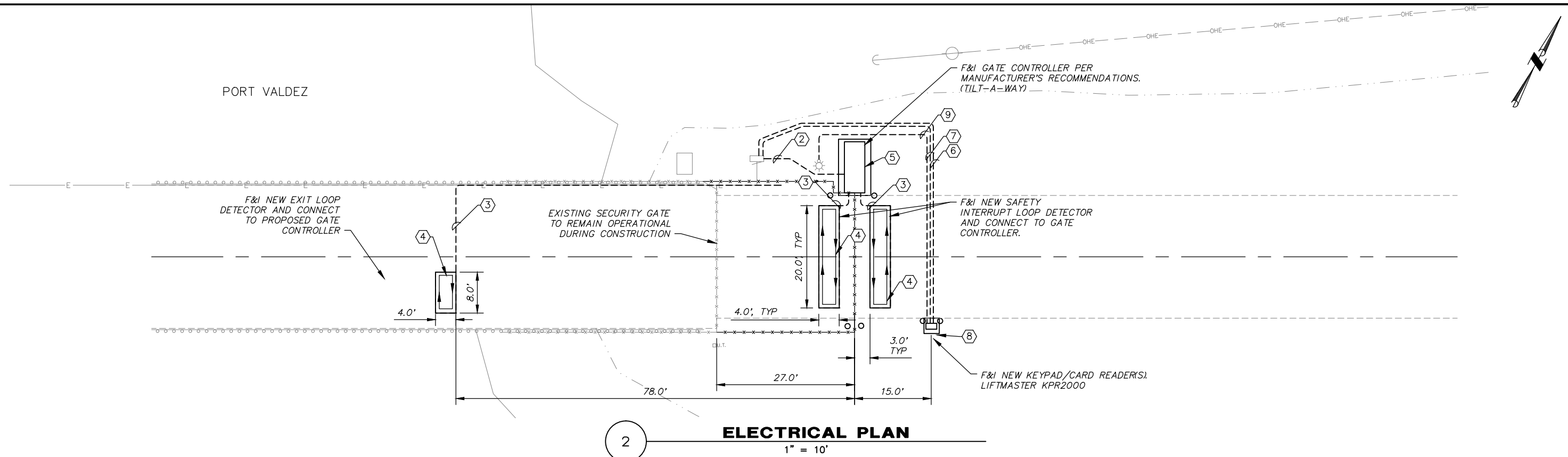
PROJECT NO. <b>20306.00</b>
CITY GRID
WATER GRID
SEWER GRID
SHEET <b>8</b>
OF <b>10</b>



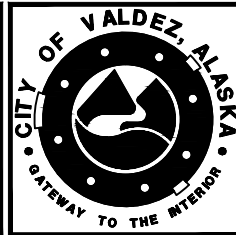
File: j:\JobsData\20306.00 Vct Gate Replacement\00 CADD\01 Working Set\03 Electrical\20306.00 Electrical Plan.dwg PLOT DATE: 9/6/2017 2:47 PM



- NOTES
- 1 CUT OR DESTROY LOOPS AT LOCATIONS SHOWN BEFORE ABANDONING IN PLACE. NO LOOPS SHALL BE LEFT IN-PLACE INTACT.
  - 2 1" C, (3) #8 (H, N, G) - GATE OPERATOR POWER
  - 3 1c#14 STRANDED LOOP DETECTOR WIRE PER MASS SPECIFICATION #80.10.4 AND IMSA 51-5.
  - 4 COIL LOOPS CLOCKWISE OR COUNTER-CLOCKWISE AS SHOWN. INTERRUPT LOOPS MUST BE COILED IN OPPOSITE DIRECTIONS.
  - 5 PROVIDE, FURNISH, AND INSTALL NEW GATE OPERATOR. TILT-A-WAY, 1 HP, 240V SINGLE-PHASE GATE OPERATOR.
  - 6 1" C, 2c#14 (KEYPAD AND CARD READER POWER)
  - 7 1-1/2" C, (2) 7c#16 (KEYPAD AND CARD READER DATA)
  - 8 PROVIDE GOOSENECK PEDESTAL MOUNTS FOR KEYPADS, ONE AT 42" AND ANOTHER AT 64". LIFTMASTER P/N PED42 & P/N PED64.
  - 9 1-1/2" C, FUTURE USE



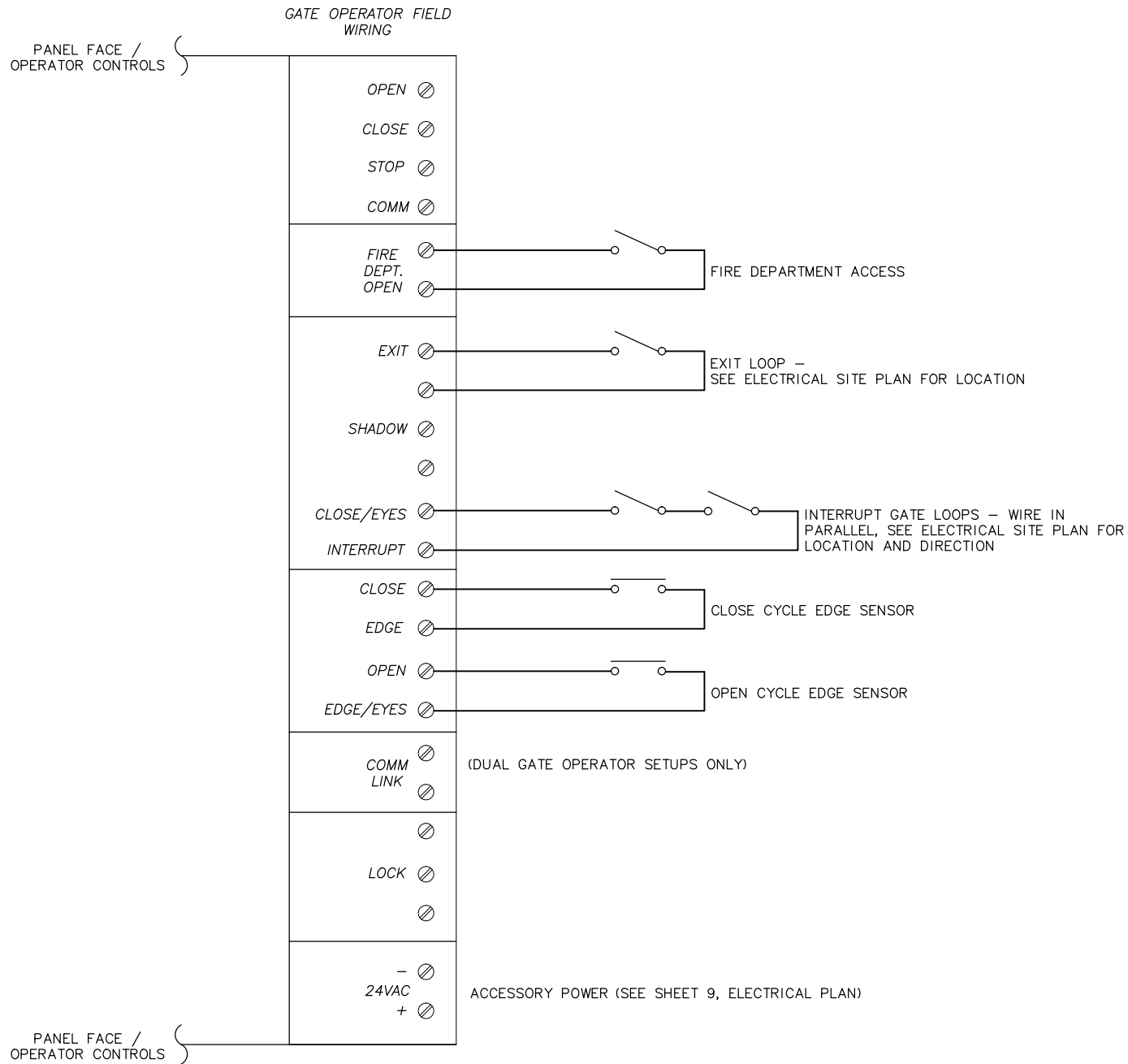
REVISION				REVISION			
REV	DATE	DESCRIPTION	BY	REV	DATE	DESCRIPTION	BY



SCALE
HOR. 1"=10'
VER. N/A
DESIGNED BY
JJ
DRAWN BY
JJ
CHECKED BY
WMM
APPROVED BY
WMM

PROJECT NO: 17-350-1708	CITY OF VALDEZ, ALASKA VCT GATE REPLACEMENT	SCHEDULE ALL	PROJECT NO. 20306.00
ELECTRICAL PLAN			CITY GRID
STATUS: FINAL			WATER GRID
DATE: SEPTEMBER 2017			SEWER GRID
			SHEET 9
			OF 10

File: J:\JobsData\20306.00 Vct Gate Replacement\00 CADD\01 Working Set\03 Electrical\20306.00 Electrical Gate Controls.dwg PLOT DATE: 9/6/2017 2:47 PM



1

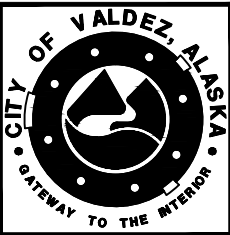
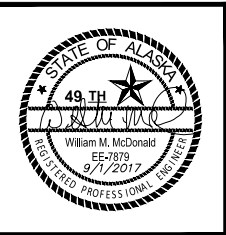
**GATE OPERATOR WIRING**

NTS

NOTE: THIS WIRING DIAGRAM IS INTENDED ONLY AS A DIAGRAMMATIC REPRESENTATION OF THE PROPOSED DESIGN FIELD WIRING. REFER TO GATE OPERATOR MANUFACTURER'S SPECIFICATIONS FOR FINAL FIELD WIRING.



REVISION				REVISION			
REV	DATE	DESCRIPTION	BY	REV	DATE	DESCRIPTION	BY



SCALE
HOR. 1"=10'
VER. N/A
DESIGNED BY JJ
DRAWN BY JJ
CHECKED BY WMM
APPROVED BY WMM

PROJECT NO: 17-350-1708	CITY OF VALDEZ, ALASKA VCT GATE REPLACEMENT	SCHEDULE ALL
GATE OPERATOR WIRING DETAIL		
STATUS: FINAL		DATE: SEPTEMBER 2017

PROJECT NO.	20306.00
CITY GRID	
WATER GRID	
SEWER GRID	
SHEET	10
OF	10