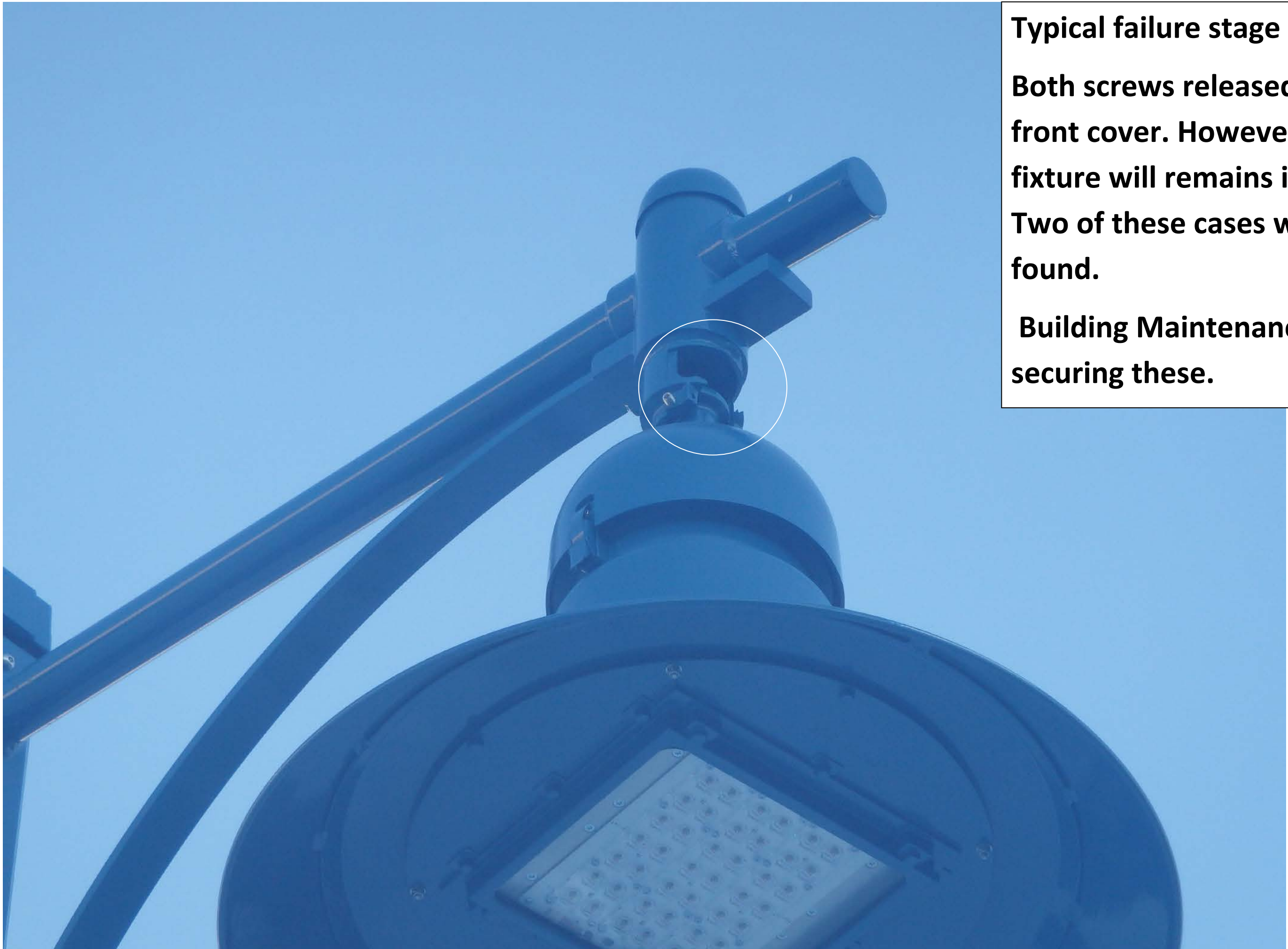


Typical failure stage 1.

One screw in the front has failed. Four of these cases were found.

Building Maintenance is securing these.



Typical failure stage 2.

Both screws released from the front cover. However, this light fixture will remain in place.

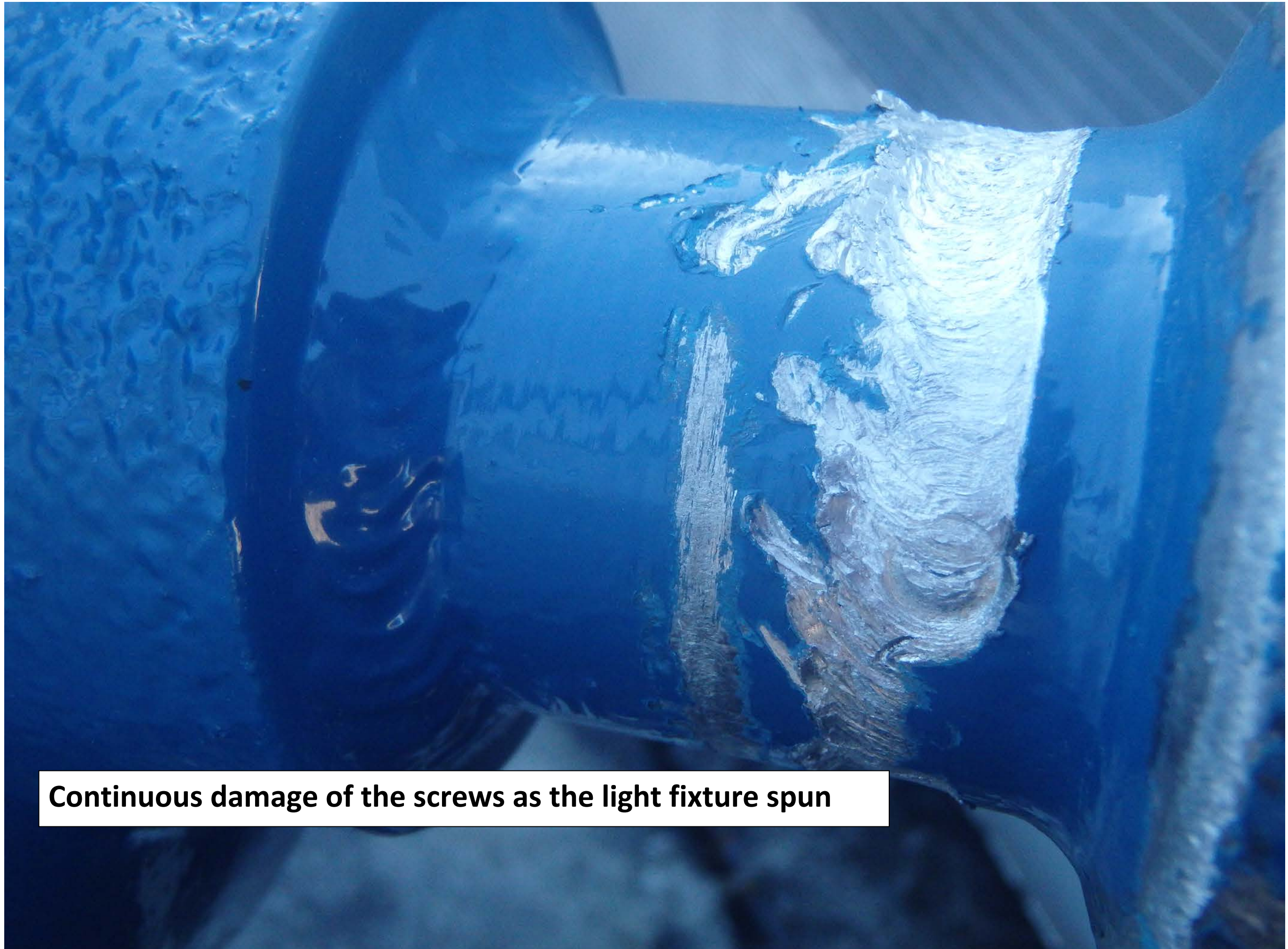
Two of these cases were found.

Building Maintenance is securing these.



Typical Failure Stage 3.

Both screws released from the front cover and the light fixture fell out. Five of the eight lights failed because of this issue.



Continuous damage of the screws as the light fixture spun



With the front cover removed, evidence of the 3 set screws damaging the spinning light fixture. The holes for the front two screws are seen here and noticeable damage done to the one on the right.



An example of a latch failure on the dome. The latch came off, and the light continued to swing until it lifted up and out of the hinge.

Two light fixtures failed this way.



**An example of a latch failure.
The screw has bent which
loosened the holding
properties of the latch.
Two lights failed this way.**



The mast arm being held by 1 of the 4 securing points. Light was removed by Building Maintenance.

Only one light failed this way.



A view behind the mast arm that failed. These are rotated and locked into the pole. During the storm a few were loosened, rotated, and subsequently came off the pole.

01/11/2017



All eight lights in storage at Building Maintenance.



**30' light fixture failure.
Mast arm and light have
rotated about 45 degrees.
Only one of these failed in
this way.**

**Located on the backside of
the arch.**

01/09/2017

**30' light support failure.
Securing wire from the
light to pole broke. Only
one of these has failed.**

**South east corner of
Meals and Egan.**

01/09/2017