

# VALDEZ NEW BOAT HARBOR PHASE 1 - UPLANDS

## CONSTRUCTION PROGRESS REPORT No. 46

AUGUST 15, 2016 – AUGUST 21, 2016

### KEY CONSTRUCTION ACTIVITIES

This period Harris Sand & Gravel (HS&G):

- Continued implementing SWPPP and traffic controls.
- Continued forming and placing concrete for boardwalk stemwalls, sidewalk, curb and gutter.
- Continued installing saddle brackets and placing glulam beams for boardwalk and picnic areas.
- Continued placing and grouting boardwalk sleepers on keys.
- Continued forming, placing and imprinting colored concrete.
- Started placing timber decking for boardwalk and picnic areas.
- Placed concrete for curb ramps at the sidewalk adjacent the boardwalk.
- Placed concrete retaining walls and slab for utility equipment at Ramps #2 and #3.
- Placed forms, reinforcement and riprap at foundation for High Mast Lights #2 and #3.
- Placed riprap to final grade elevation at northeast portion of fill.
- Tested storm drain outfall pipes for required pressure and duration.
- Tested sanitary sewer manholes for compliance with ADEC permit.

Western Marine (WMC) continues dredging the new harbor basin, hauling rock from Valdez Glacier Quarry, and placing rock by barge and trucks for construction of the breakwaters.

EMC inspected general progress, work layout, tested soil compaction and sampled and tested concrete. Photographs by ARCADIS and EMC unless noted.



Placing 40 foot lengths of 12 inch deep glulam beams on concrete sleepers to support decking for boardwalk

# VALDEZ NEW BOAT HARBOR PHASE 1 - UPLANDS

## CONSTRUCTION PROGRESS REPORT No. 46

AUGUST 15, 2016 – AUGUST 21, 2016



Attaching boardwalk deck planks to glulam beams



Forming retaining wall for utility pad at ramp



Curb, boardwalk, picnic area platform (framing)



Placing concrete for utility pad retaining wall



Boardwalk deck planks laid on glulam beams



Placing slurry fill around utilities at pad area



# VALDEZ NEW BOAT HARBOR PHASE 1 - UPLANDS

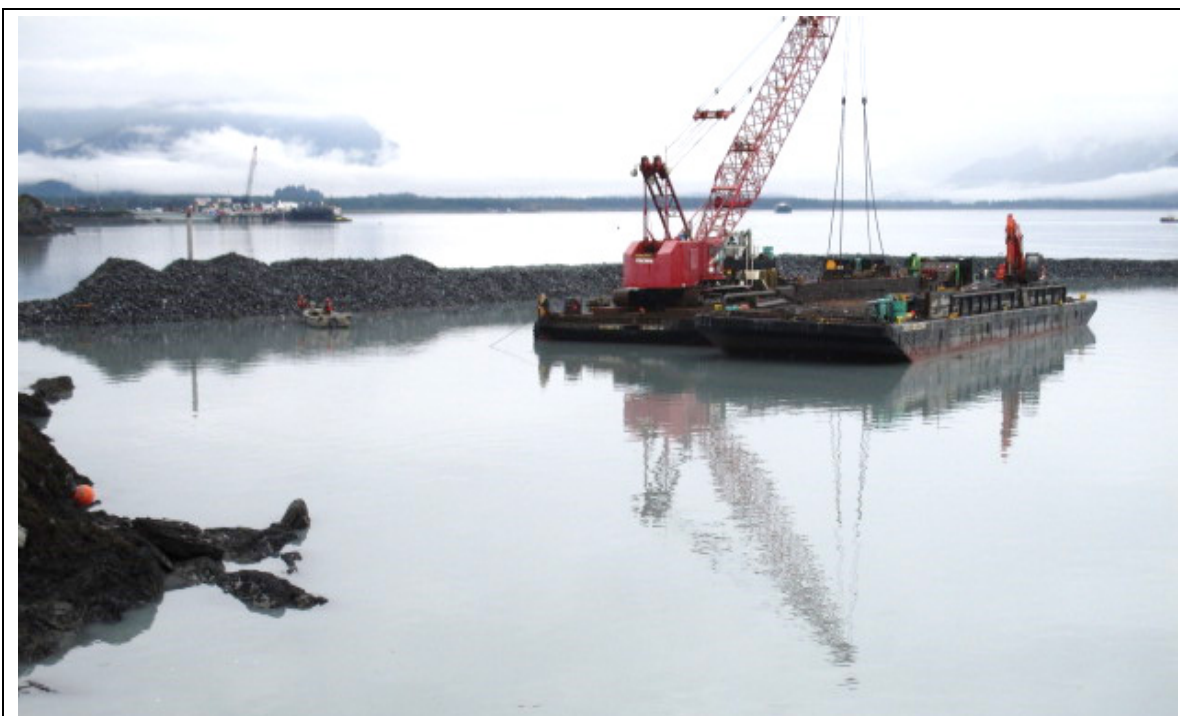
## CONSTRUCTION PROGRESS REPORT No. 46

AUGUST 15, 2016 – AUGUST 21, 2016

---



WMC dredging sediment to -14 foot depth at west portion of the mooring basin (south breakwater is beyond)



WMC placing rock for construction of the east breakwater