

# VALDEZ NEW BOAT HARBOR PHASE 1 - UPLANDS

## CONSTRUCTION PROGRESS REPORT No. 45

AUGUST 8, 2016 – AUGUST 14, 2016

### KEY CONSTRUCTION ACTIVITIES

This period Harris Sand & Gravel (HS&G):

- Continued implementing SWPPP and traffic controls.
- Continued forming and placing concrete for boardwalk stemwalls, sidewalk, curb and gutter.
- Continued installing saddle brackets and placing glulam beams for boardwalk and picnic areas.
- Continued placing and grouting boardwalk sleepers on keys.
- Placed concrete slab for utility equipment at Ramp #1.
- Placed forms, reinforcement and riprap at foundation for High Mast Light #3.
- Tested 8" HDPE sewer line for required pressure and duration.
- First Class Finishing (subcontractor) formed, placed and imprinted colored concrete.

CVEA placed a concrete electrical vault on the utility pad adjacent to Ramp #1.

Western Marine continues dredging the new harbor basin, hauling rock from Valdez Glacier Quarry, and placing rock by barge and trucks for construction of the breakwaters.

EMC inspected general progress, work layout, tested soil compaction and sampled and tested concrete. Photographs by ARCADIS and EMC unless noted.



Installing saddle brackets on picnic area sleepers to secure glulam beams (like boardwalk beams at bottom right)



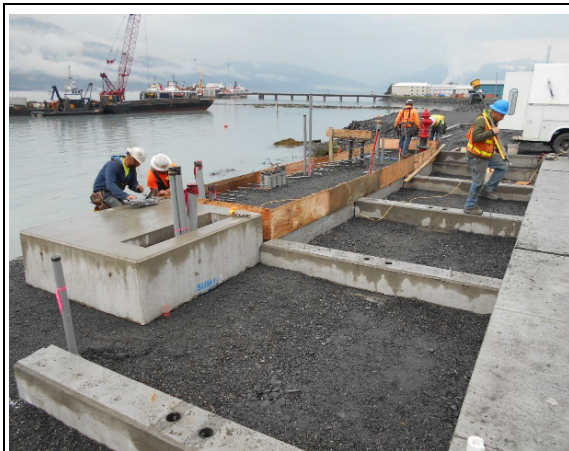
# VALDEZ NEW BOAT HARBOR PHASE 1 - UPLANDS

## CONSTRUCTION PROGRESS REPORT No. 45

AUGUST 8, 2016 – AUGUST 14, 2016



Mesh on concrete blocks for island area sidewalk



Forming utility slab and boardwalk stemwall



Placing red concrete for sidewalk at island area



Steel mesh and forms at utility slab



Brick pattern imprinted on concrete at island area



Plastic protects concrete finishing at utility slab



# VALDEZ NEW BOAT HARBOR PHASE 1 - UPLANDS

## CONSTRUCTION PROGRESS REPORT No. 45

AUGUST 8, 2016 – AUGUST 14, 2016



Glulams for West Picnic Area have been placed and secured with saddle brackets. Steel brackets on top of the round concrete pilings will support the canopy structure (part of future building contract)



Installing solid blocking between glulam beams for the West Picnic Area