

# VALDEZ NEW BOAT HARBOR PHASE 1 - UPLANDS

## CONSTRUCTION PROGRESS REPORT No. 33

MAY 16, 2016 – MAY 22, 2016

### KEY CONSTRUCTION ACTIVITIES

This period Harris Sand & Gravel (HS&G):

- Continued implementing SWPPP and traffic controls.
- Continued fusion welding long sections of HDPE pipe for sewer and water mains and services.
- Installed 3" HDPE water service to Ramp 1.
- Continued excavation and backfill of sewer lines and installed sewer line for future restroom.
- Welded structural steel caps on pilings to support future gangways at Ramps 1, 2 and 3.
- Finished placing retaining wall forms and reinforcing steel at Ramp 3.
- Excavated, bedded and set storm drain pipes and manholes and two outlet flapper valves.
- Filled to final subgrade elevation and compacted across the project site.
- Zastrow Enterprises formed and precast concrete boardwalk sleepers at their warehouse.

Western Marine continues dredging the new harbor basin and placing materials for three breakwaters.

EMC provided general and pipe inspections and concrete sampling and testing. Photographs by ARCADIS and EMC unless noted.



Retaining wall forms for ramp abutment (foreground) and Western Marine dredging in the float basin

# VALDEZ NEW BOAT HARBOR PHASE 1 - UPLANDS

## CONSTRUCTION PROGRESS REPORT No. 33

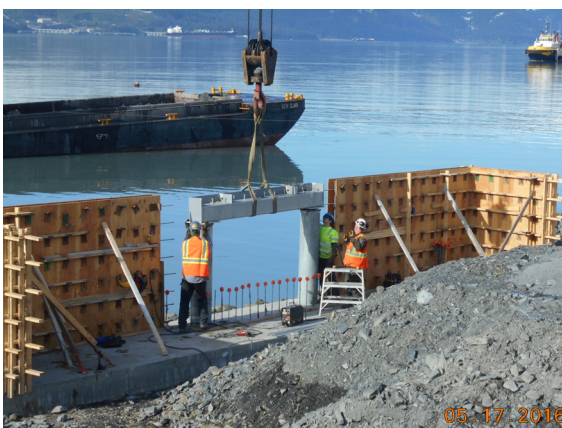
MAY 16, 2016 – MAY 22, 2016



Welding HDPE reducer from water main to service line



Placing rigid insulation above sewer service line



Placing structural steel cap on abutment piling at Ramp 3



Welding cap on piling for attachment of future gangway



Placing and bedding corrugated storm drain pipe



Checking elevation for storm drain manhole base section

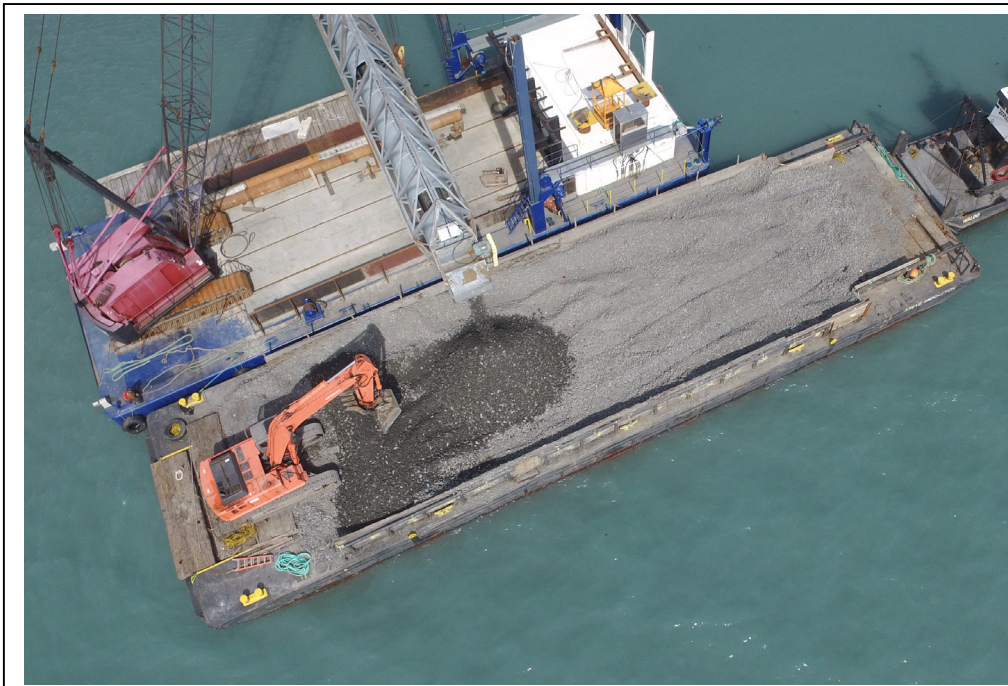


# VALDEZ NEW BOAT HARBOR PHASE 1 - UPLANDS

## CONSTRUCTION PROGRESS REPORT No. 33

MAY 16, 2016 – MAY 22, 2016

---



HS&G conveyor discharging rock for breakwaters on Western Marine's barge. Photo by J. Talbott



Placing concrete into forms for precast sleepers at Zastrow Enterprises warehouse