

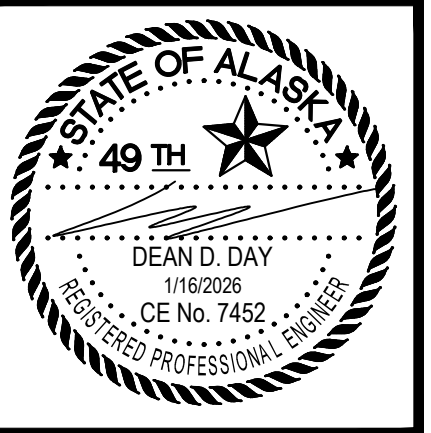
NO.	DATE	BY	REVISION

SITE GRADING PLAN

**NEW WELL 5 PUMPING STATION
VALDEZ, ALASKA**

TITLE

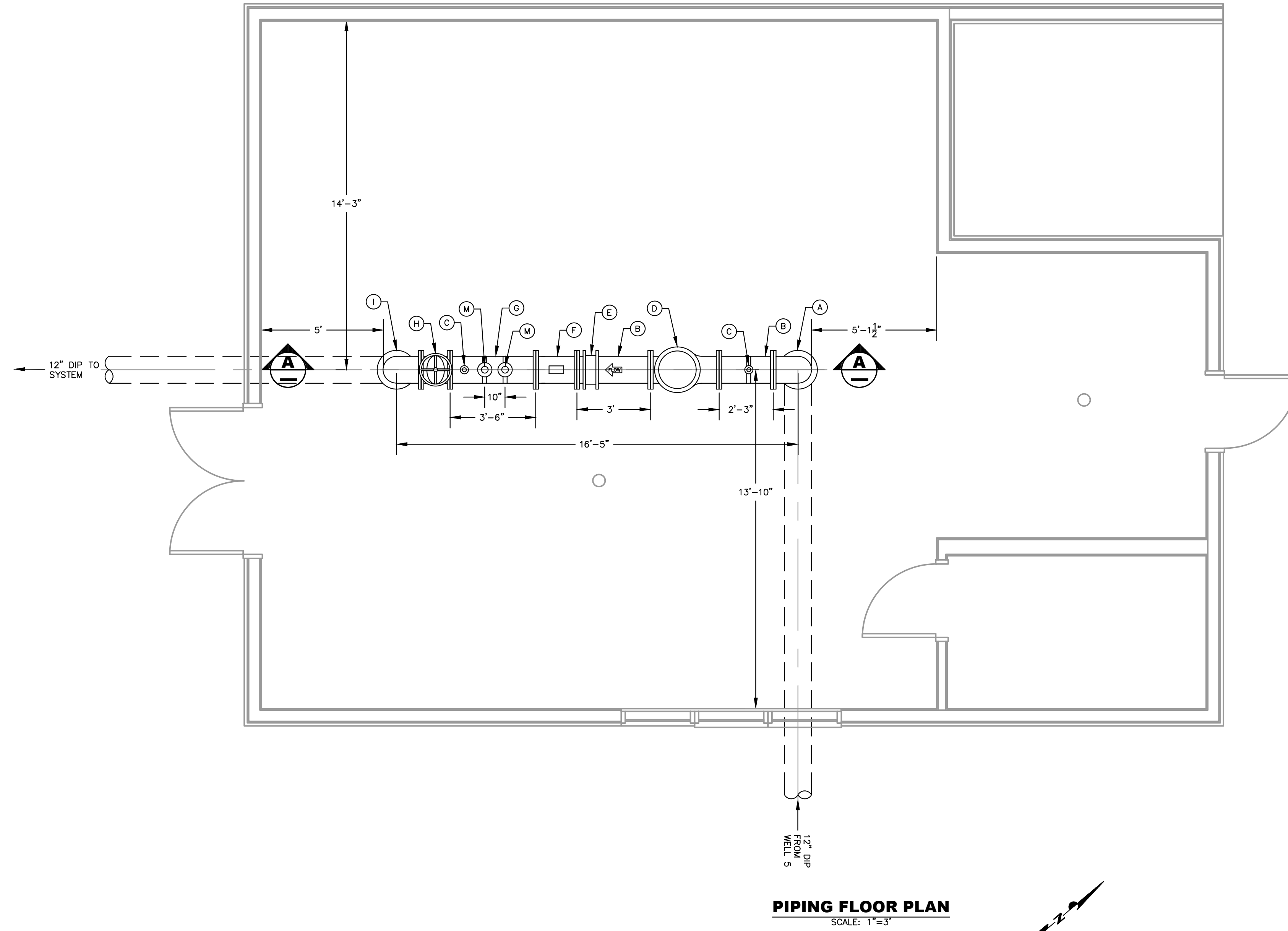
PROJECT



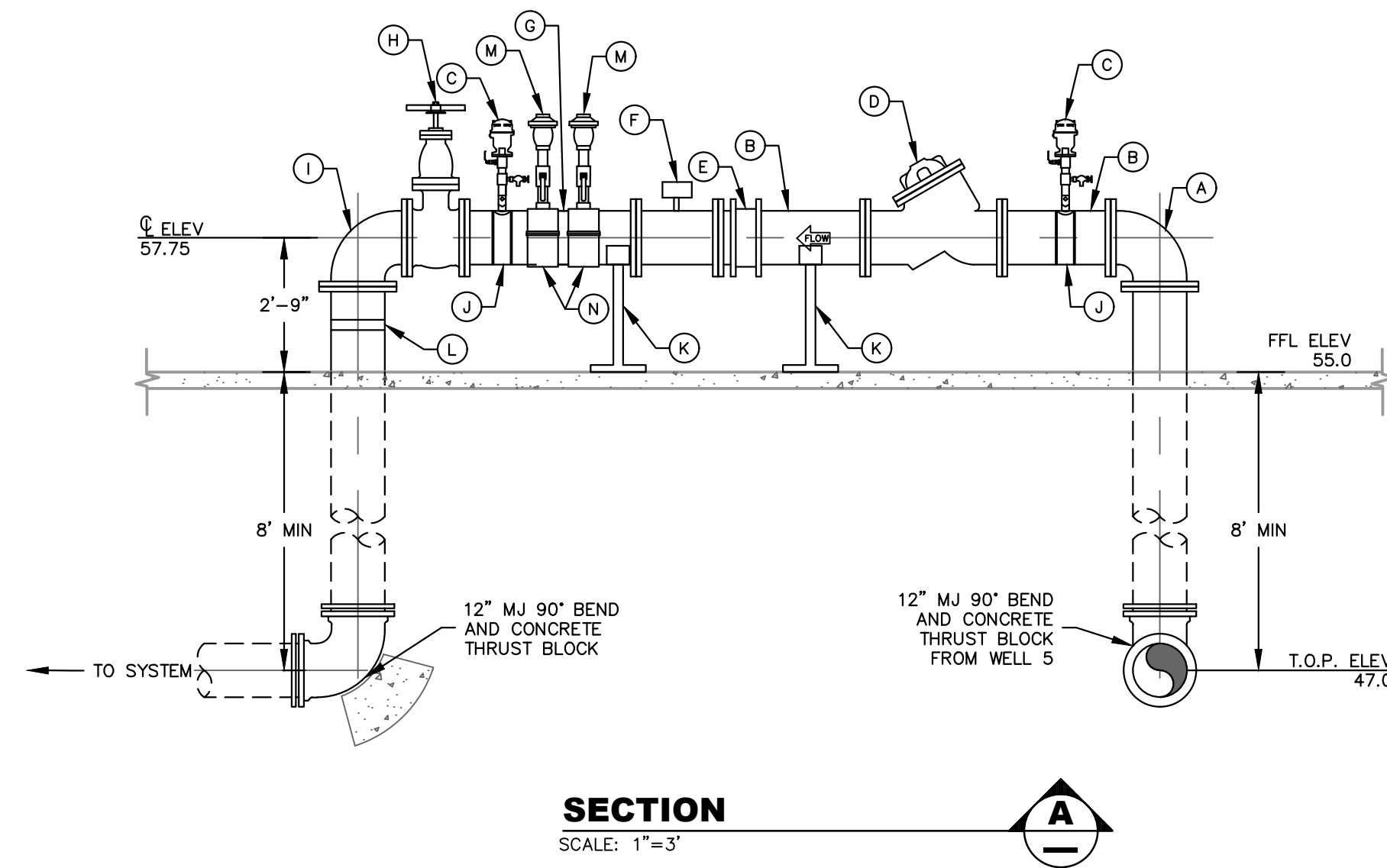
DAY ENGINEERING

PG. BOX 151778 • ELY, NEVADA 89315 • (775) 399-5353
63 KEYSTONE AVENUE #206 • IRVING, NEVADA 89135 • (775) 346-8824

BY : **C4** OF **8** SHEETS
DATE : JAN 2026
SCALE : AS SHOWN



PIPING FLOOR PLAN
SCALE: 1"=3'



SECTION
SCALE: 1"=3'

MATERIALS LIST		
ITEM	QTY	DESCRIPTION
A	1	12" DI FL 90
B	2	12" DI FLxPE SPOOL
C	2	2" COMBINATION AIR VALVE WITH SAMPLE TAP
D	1	12" CHECK & BOOSTER PUMP CONTROL VALVE (BERMAD 740 EN)
E	1	12" REST. FL ADAPT. (ROMAC RFCA)
F	1	12" MAG METER (BADGER M2000)
G	1	12" DI FLxFL SPOOL
H	1	12" OS&Y FL RES. WEDGE GATE VALVE (AFC 2500)
I	1	12" DI FL 90
J	2	2" DOUBLE STRAP TAPPING SLEEVE
K	1	PIPE SUPPORT
L	1	1 1/2" SERVICE SADDLE
M	2	2" BERMAD PRESSURE RELIEF VALVES (SEE DETAIL SHEET 3/D1)
N	2	12"x2" STAINLESS SADDLES

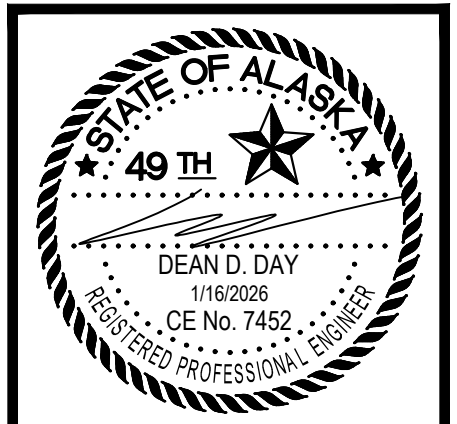
- NOTE:
 1) SEE ARCHITECTURAL, MECHANICAL, AND ELECTRICAL SHEETS FOR BUILDING DETAILS.
 2) FEDERAL SAFETY BLUE SHERWIN-WILLIAMS MACROPOXY EPOXY FOR POTABLE WATER OR EQUAL, 2 COATS AND 10 MILS MINIMUM ON ALL EXPOSED POTABLE WATER PIPING AND FITTINGS.

DATE	BY	REVISION
9/3/2025	MU	ITEM L MOVED TO OTHER SIDE OF CHECK VALVE AND CHANGED SIZE
9/23/2025	MU	ADDED NOTE FOR PAINT ELEVATIONS ADDED
10/31/2025	MU	ELEVATIONS ADDED

BUILDING PIPING PLAN AND SECTION

**NEW WELL 5 PUMPING STATION
VALDEZ, ALASKA**

TITLE PROJECT

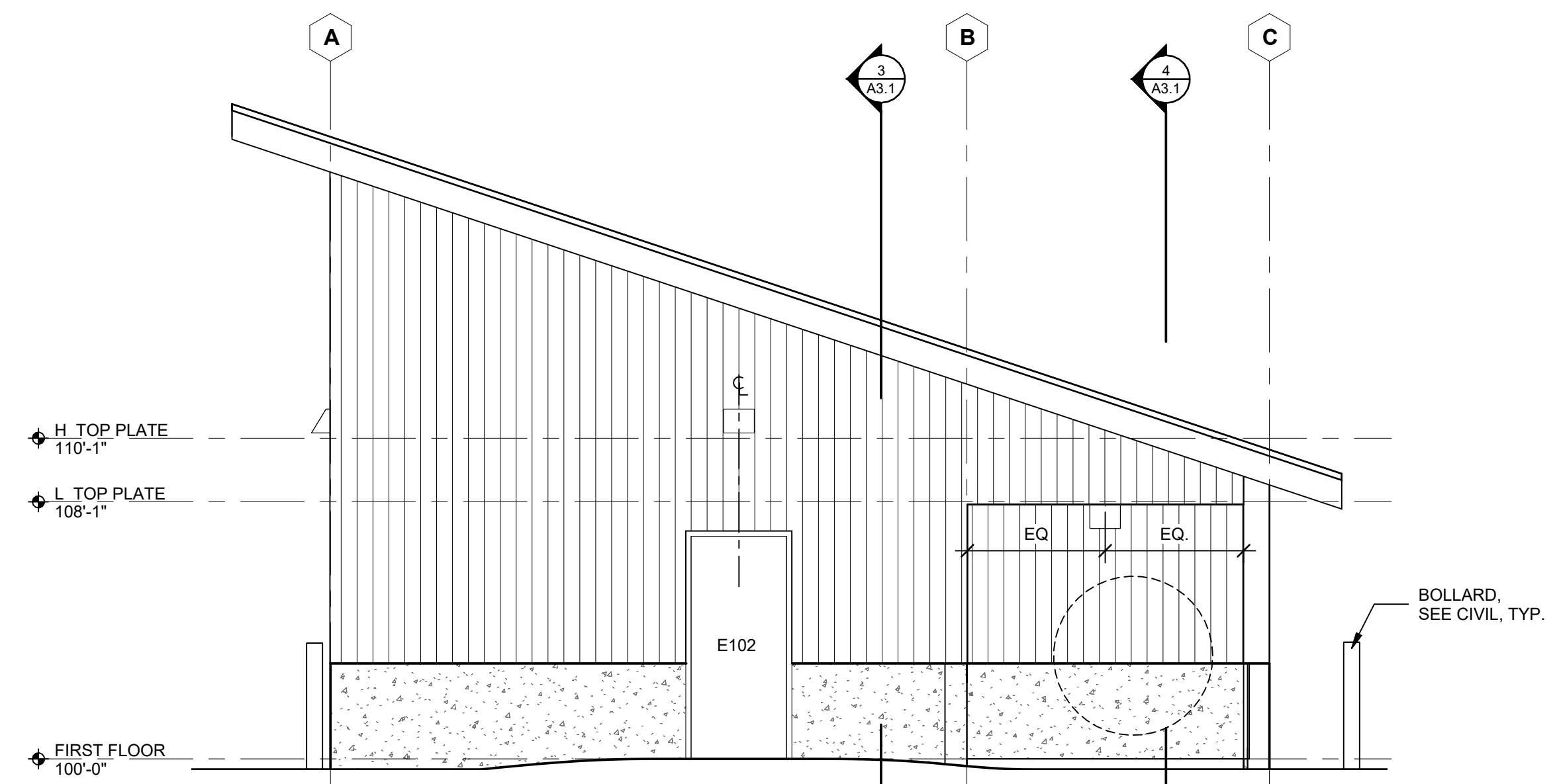


DAY ENGINEERING

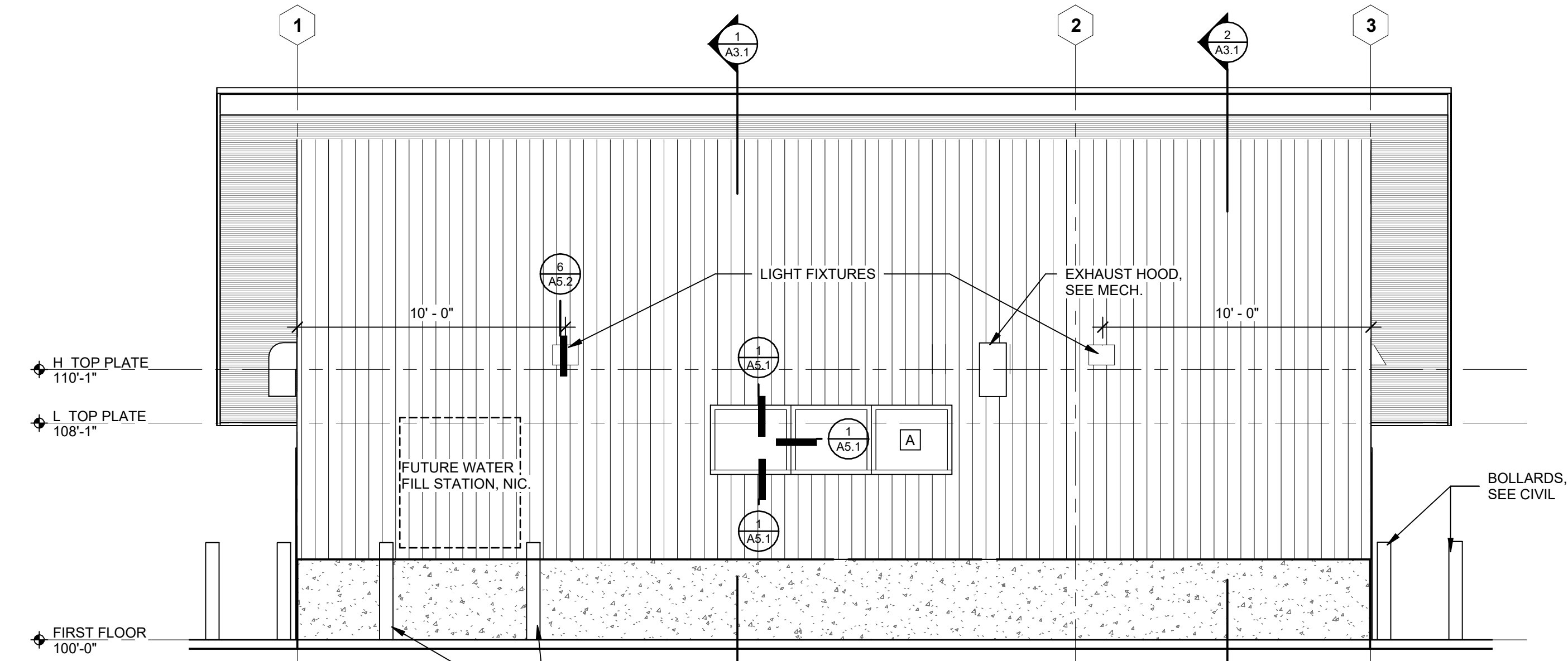
PG. BOX 151778 • ELY, NEVADA 89315 • (775) 299-5333
 63 KEYSTONE AVENUE #206 • RENO, NEVADA 89503 • (775) 346-8824

BY :
 DATE : JAN 2026
 SCALE : AS SHOWN

SHEET **C5** OF **8** SHEETS

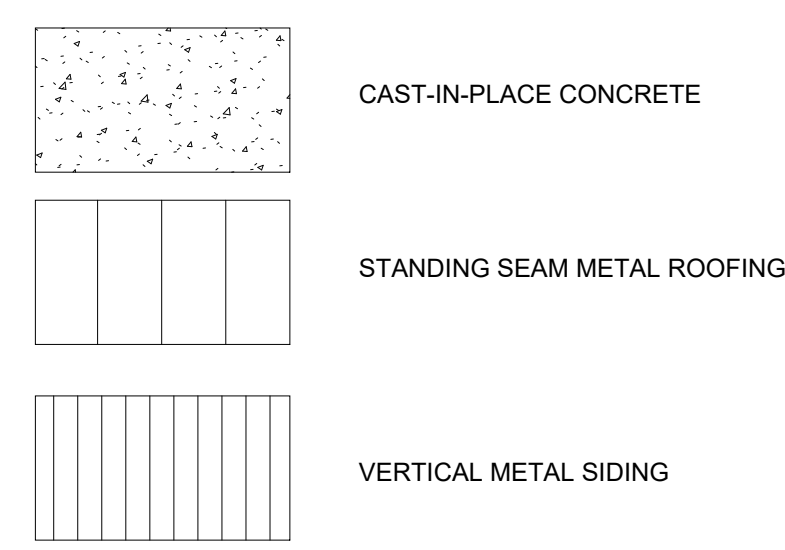


2 NORTHEAST ELEVATION
Scale: 1/4" = 1'-0"



1 SOUTHEAST ELEVATION
Scale: 1/4" = 1'-0"

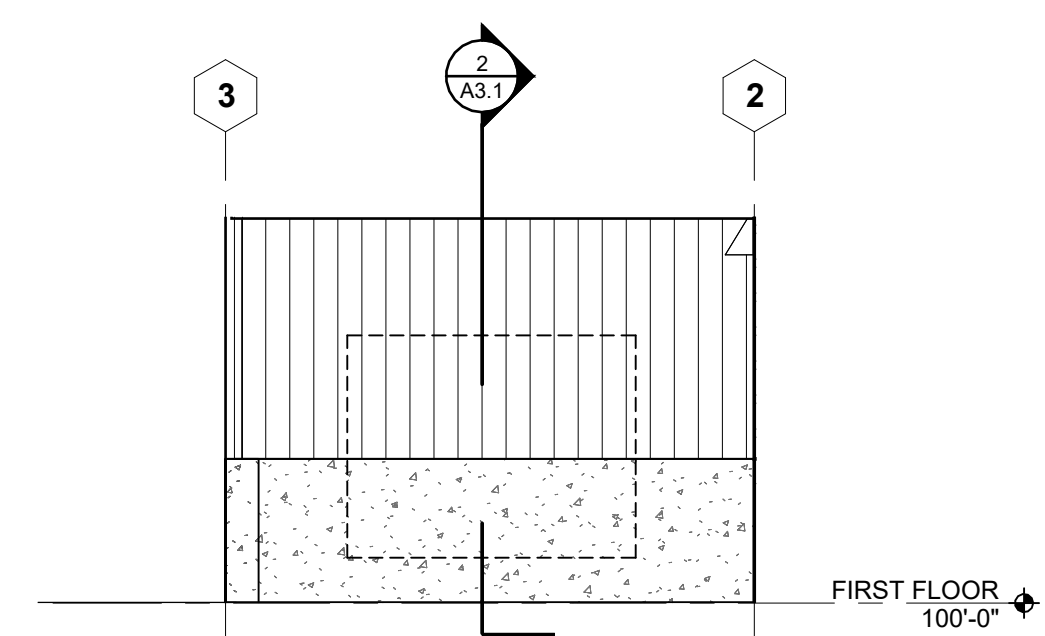
MATERIALS LEGEND



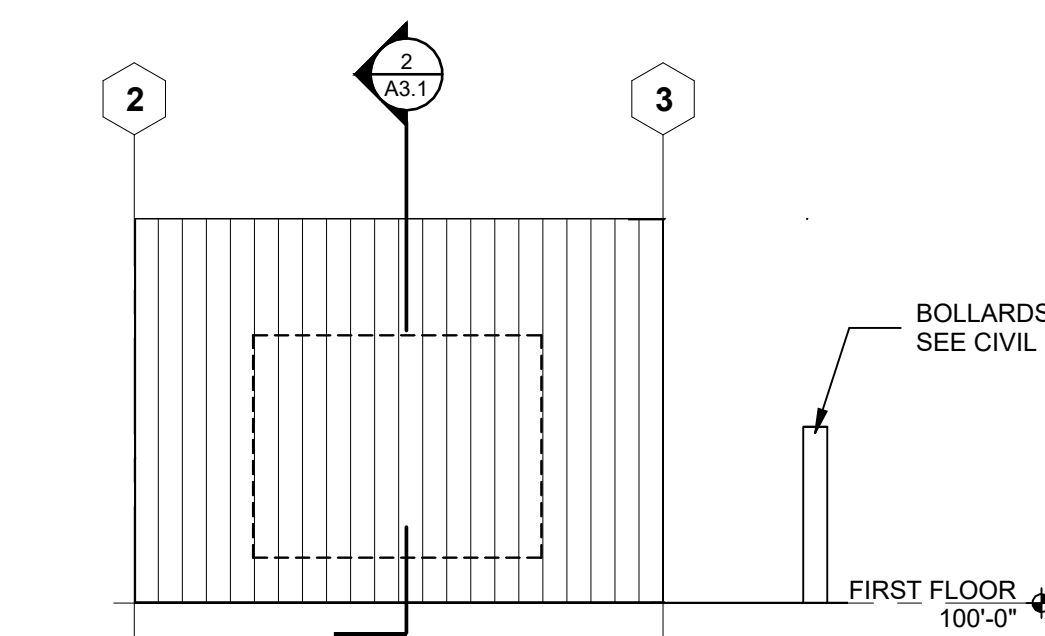
NOTE: THIS LEGEND DOES NOT INCLUDE ALL MATERIALS. SEE NOTES & REFERENCED DETAILS FOR ADDITIONAL INFORMATION.

EXTERIOR ELEVATION GENERAL NOTES

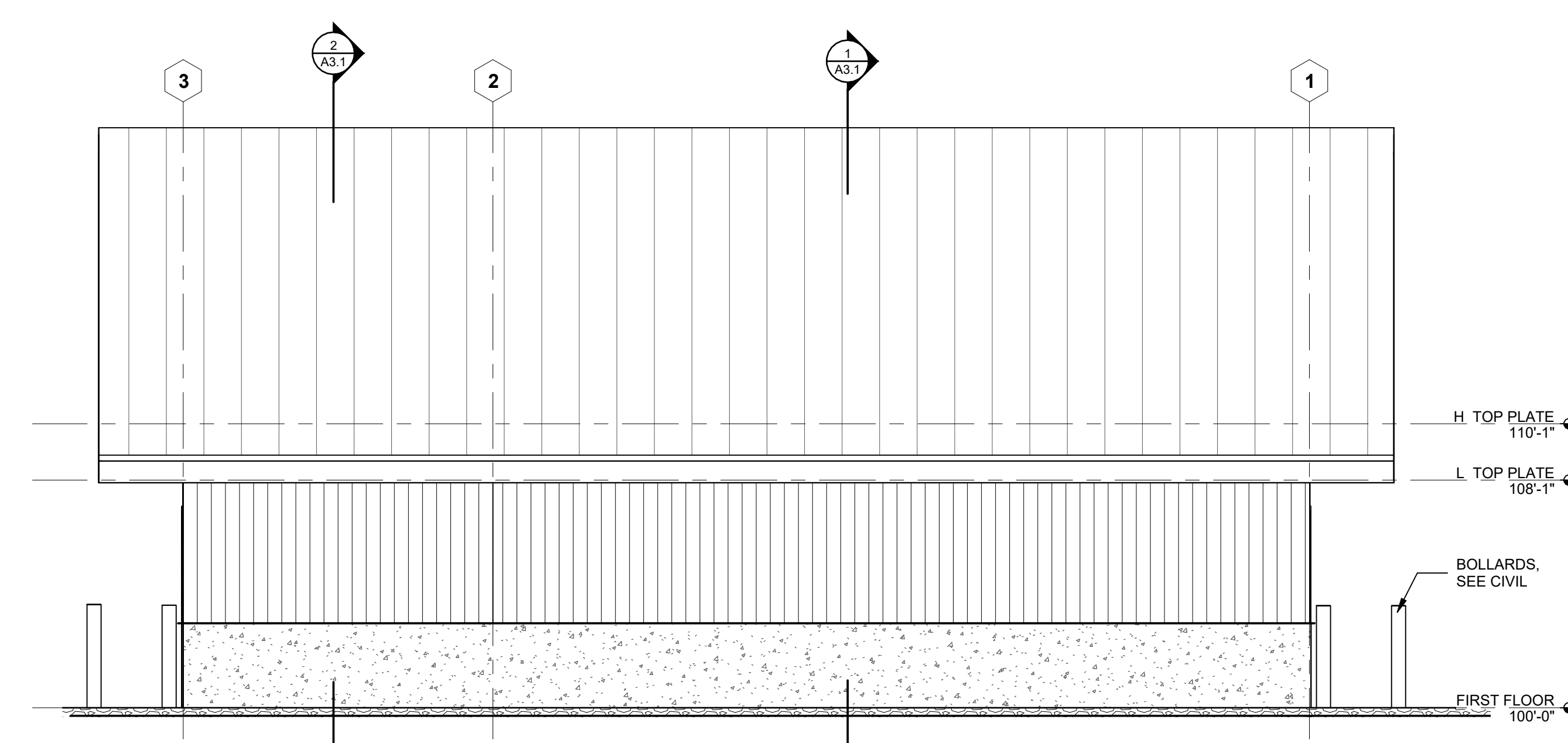
1. LOCATION AND SPACING OF WINDOW MULLIONS, MASONRY CONTROL JOINTS AND COURSE PATTERNS, ETC., ARE TO BE AS SHOWN ON EXTERIOR ELEVATIONS. WHERE NOT DIMENSIONED OR DETAILED, WINDOW MULLIONS AND MATERIAL JOINTS ARE TO BE EQUALLY SPACED AND/OR CENTERED/ALIGNED W/ ADJACENT ELEMENT (MASONRY COLUMN, EDGE OR CENTER LINE OF WINDOW OR DOOR OPENING, ETC.) AS SHOWN.
2. SEE SHEET AX.X FOR ALUMINUM LOUVER TYPES AND SEE MECH FOR COORDINATION WITH DUCTWORK.
3. REFER TO DETAILS FOR DIMENSION REFERENCE POINTS.
4. C.J'S EXTEND FULL HEIGHT OF MASONRY, TYP. WHERE "C.J" IS INDICATED AT INSIDE CORNERS THE JOINT SHALL PENETRATE THE MASONRY SURFACE ON WHICH THE LABEL OCCURS. SEE DETAILS FOR ADDITIONAL C.J LOCATIONS.
5. ALL WINDOW AND LOUVER DIMENSIONS ARE FOR ROUGH OR MASONRY OPENING, UNLESS NOTED OTHERWISE. SEE PLANS FOR ADDITIONAL DIMENSION INFORMATION.
6. 100'-0" IS THE DATUM ELEVATION AND CORRESPONDS TO THE REFERENCED FLOOR SLAB ELEVATION 1078.00'. SEE CIVIL FOR FURTHER INFORMATION.
7. EXTERIOR WALL FINISHES EXTEND FULL HEIGHT TO SOFFITS (NOT SHOWN WHERE EAVES OBSCURE VIEW). SEE BUILDING SECTIONS & DETAILS.
8. SEE REFLECTED CEILING PLANS (RCP) FOR SHEET METAL CLAD SOFFIT COLORS. SHEET METAL CLAD FIN'S & VERT FACE OF SOFFIT TO MATCH COLOR OF ASSOCIATED SOFFIT AS NOTED ON RCP.



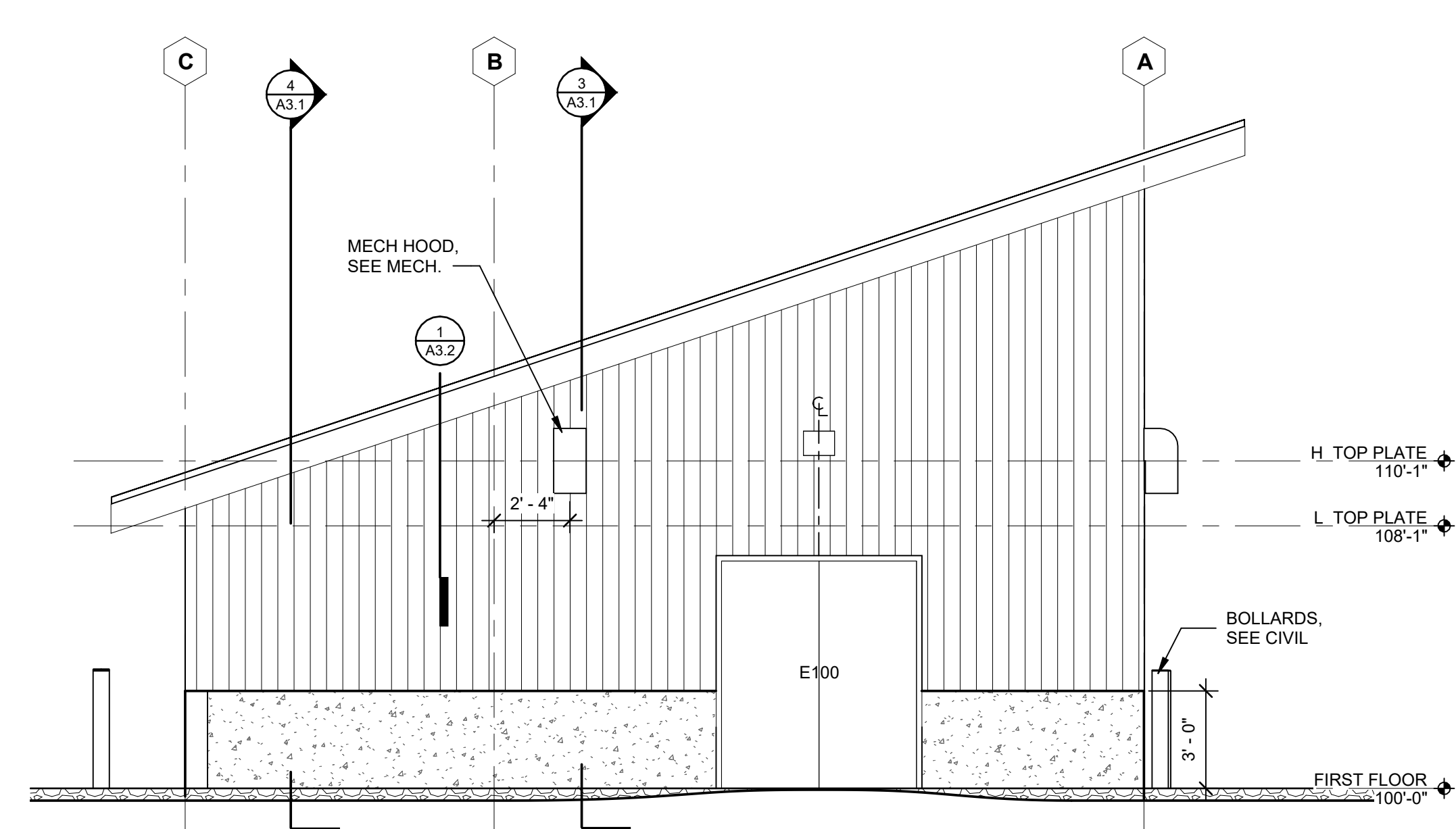
4 NW ELEVATION 2
Scale: 1/4" = 1'-0"



3 SE ELEVATION 2
Scale: 1/4" = 1'-0"



6 NORTHWEST ELEVATION
Scale: 1/4" = 1'-0"



5 SOUTHWEST ELEVATION
Scale: 1/4" = 1'-0"

NO.	REVISION	DATE	BY

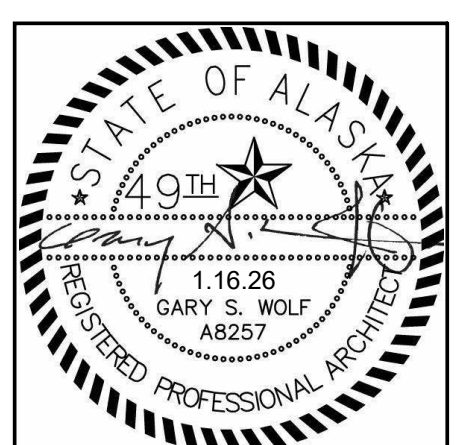
WOLF
ARCHITECTURE

625 S Cobb St Palmer, AK 99645
907.746.6670 | wolfarchitecture.com

EXTERIOR ELEVATIONS

NEW WELL 5 PUMPING STATION
VALDEZ, ALASKA

TITLE PROJECT

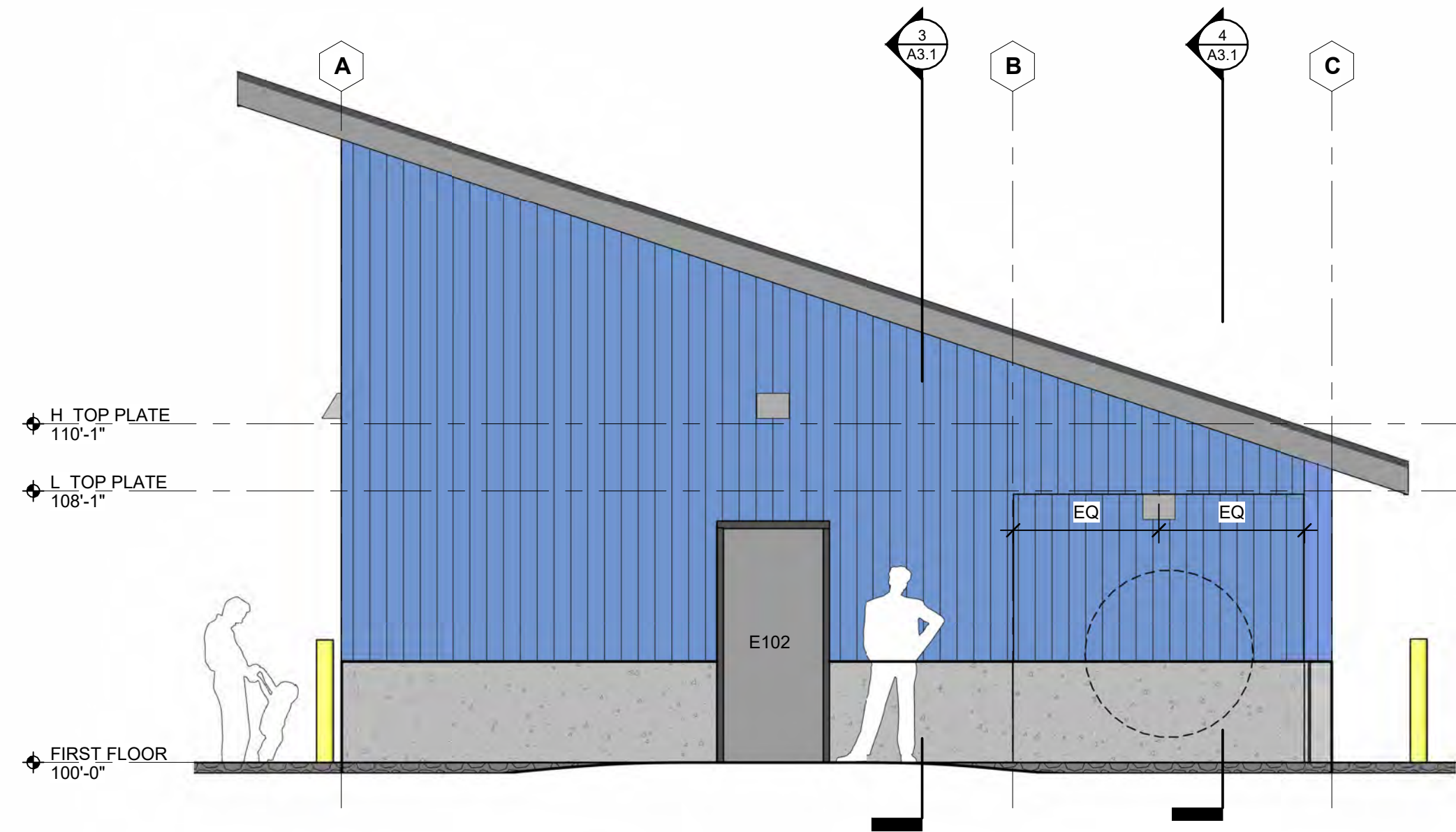


DAY ENGINEERING

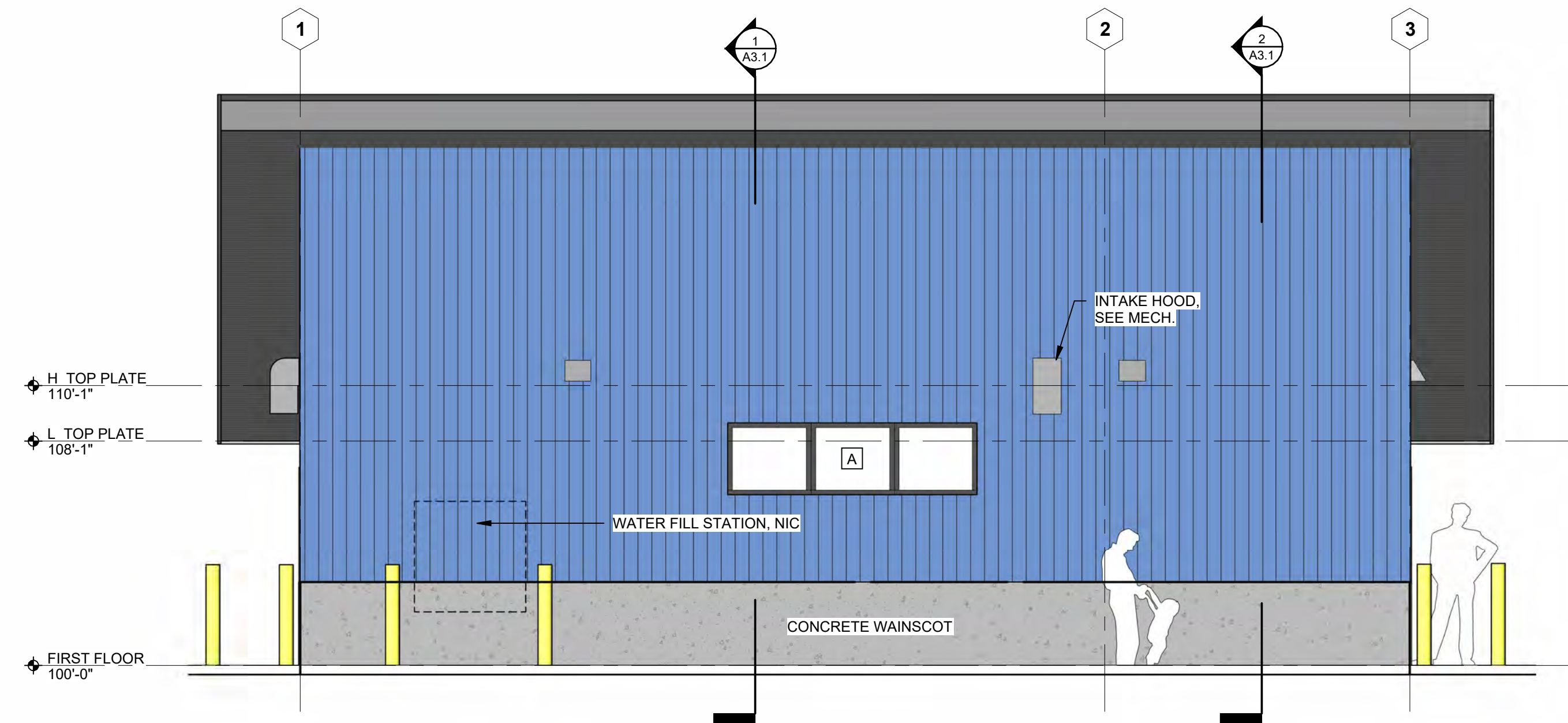
5 EAST PARK STREET • FALLON, NEVADA 89406 • (775) 423-9090
PO BOX 631 • EUREKA, NEVADA 89316 • (775) 253-1743

BY: DATE: 1/16/26
SCALE: **A2.1**

SHEET

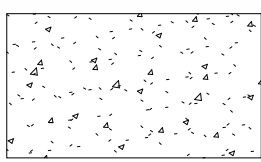
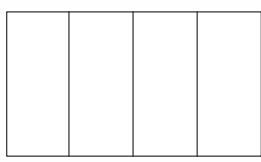
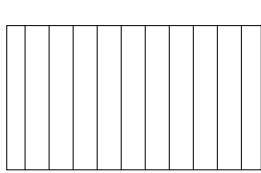


2 NORTHEAST ELEVATION COLOR
Scale: 1/4" = 1'-0"



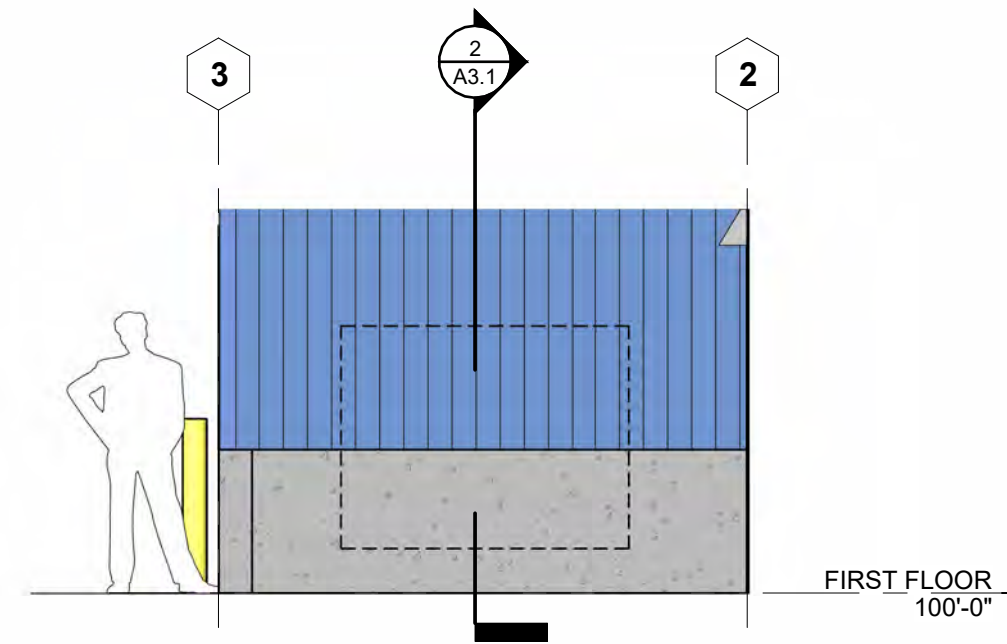
1 SOUTHEAST ELEVATION COLOR
Scale: 1/4" = 1'-0"

MATERIALS LEGEND

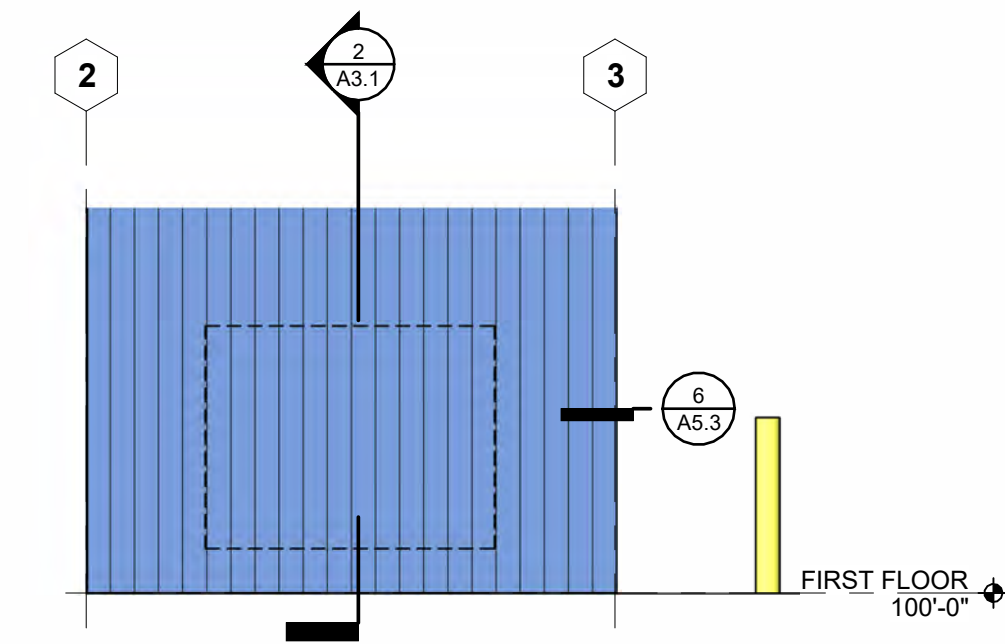
-  CAST-IN-PLACE CONCRETE
-  STANDING SEAM METAL ROOFING
-  VERTICAL METAL SIDING

NOTE: COLORED ELEVATIONS ARE PROVIDED FOR MATERIAL AND FINISH REFERENCE. CONFIRM COLOR SELECTION WITH ARCHITECT AND OWNER PRIOR TO ORDERING MATERIAL.

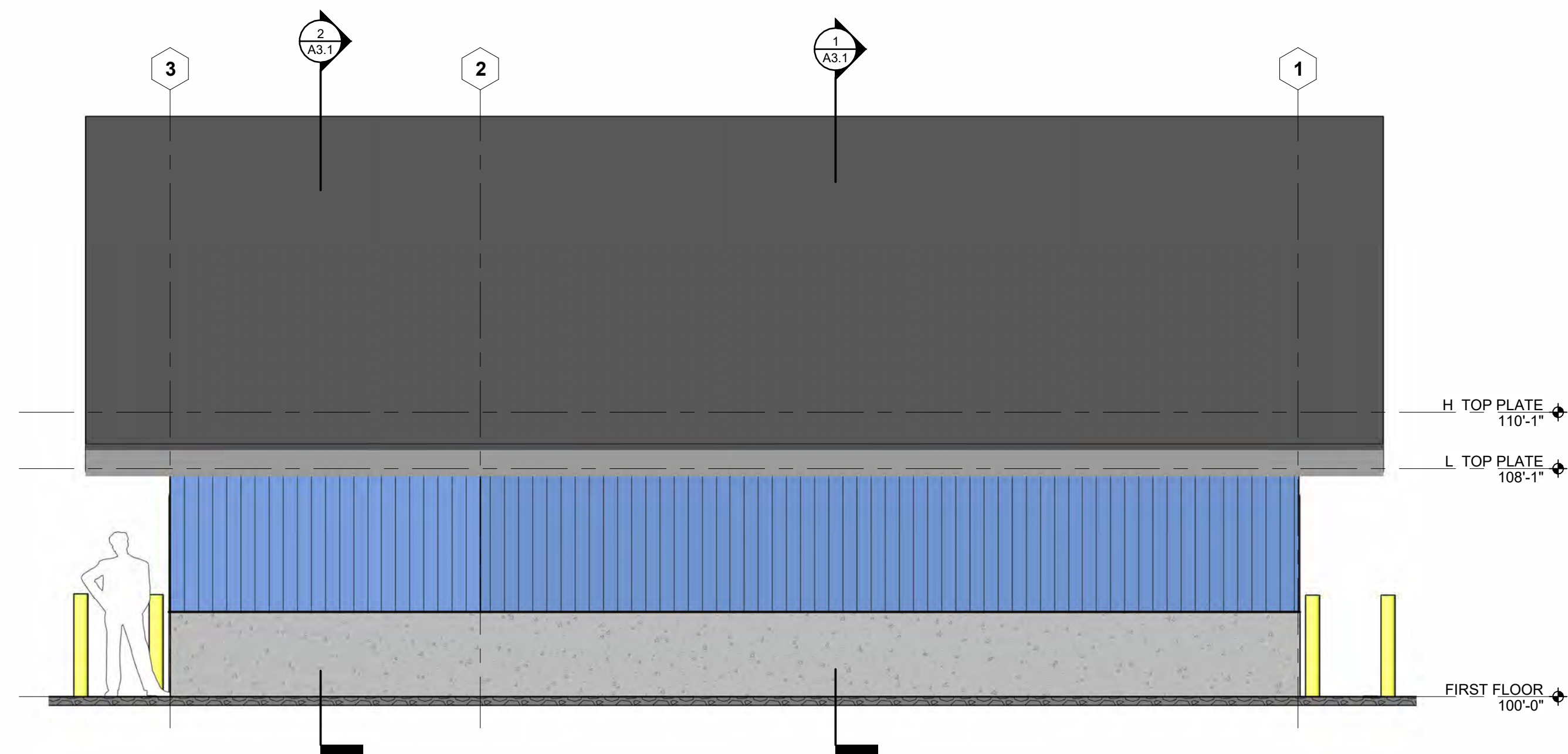
NOTE: THIS LEGEND DOES NOT INCLUDE ALL MATERIALS. SEE NOTES & REFERENCED DETAILS FOR ADDITIONAL INFORMATION.



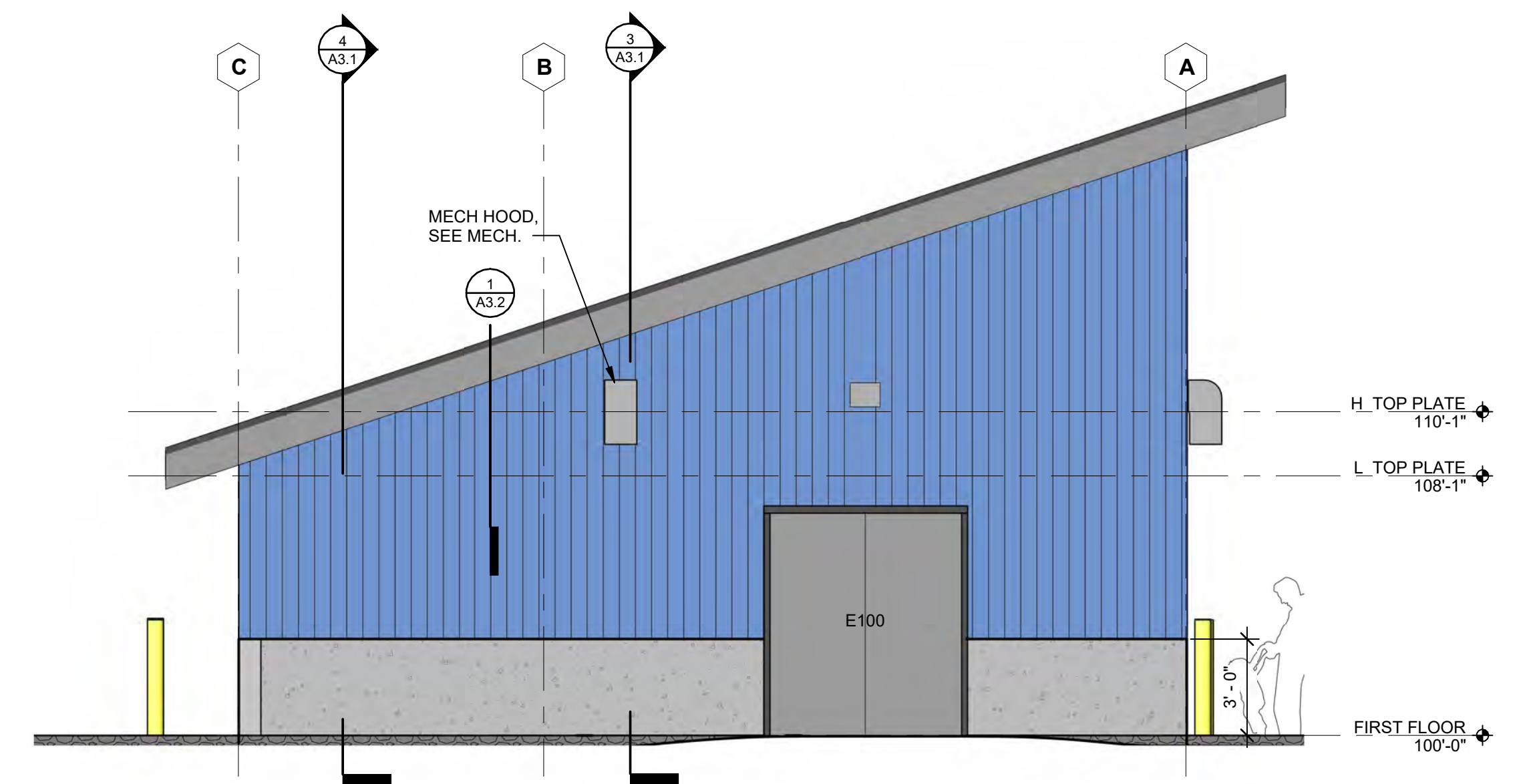
4 NW ELEVATION 2 COLOR
Scale: 1/4" = 1'-0"



3 SE ELEVATION 2 COLOR
Scale: 1/4" = 1'-0"



6 NORTHWEST ELEVATION COLOR
Scale: 1/4" = 1'-0"



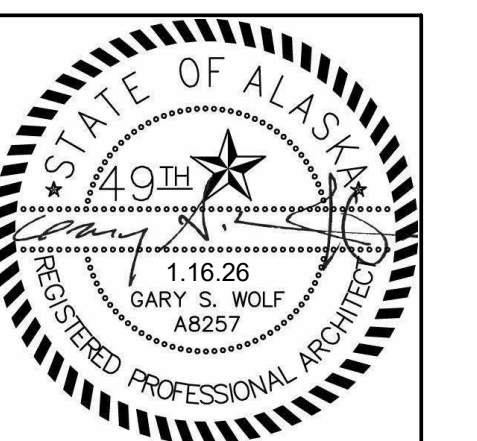
5 SOUTHWEST ELEVATION COLOR
Scale: 1/4" = 1'-0"

NO.	REVISION	DATE	BY

WOLF
ARCHITECTURE

625 S Cobb St Palmer, AK 99645
907.746.6670 | wolfarchitecture.com

ELEVATIONS - COLOR
 NEW WELL 5 PUMPING STATION
 VALDEZ, ALASKA



DAY ENGINEERING

5 EAST PARK STREET • FALLON, NEVADA 89405 • (775) 423-9090
PO BOX 631 • EUREKA, NEVADA 89316 • (775) 253-1743

BY: DATE: 01/16/2026
SCALE: **A2.2**