



CITY OF VALDEZ FIBER INSTALL

CONTACT INFORMATION

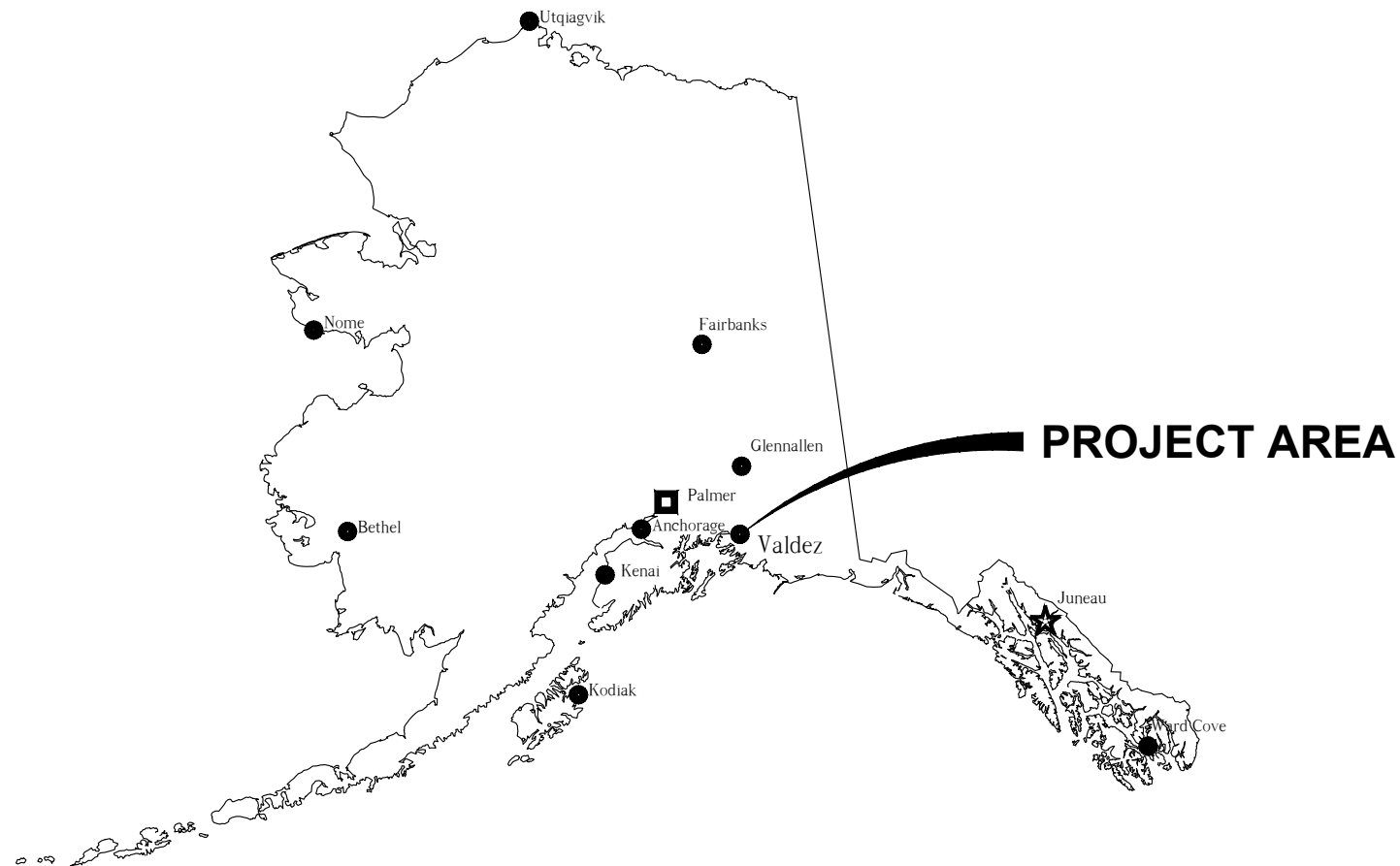
NEW HORIZONS TELECOM, INC.
 901 COPE INDUSTRIAL WAY
 PALMER, ALASKA 99645
 PHONE: (907) 761-6000
 LICENSE # AECC610
CIVIL ENGINEER
 DALE BROWNING, PE
 PHONE - (907) 761-6069

PROJECT INFORMATION

PROJECT LOCATION: VALDEZ, AK
 NHTI PROJECT NUMBER: 22-0132-90-05

DRAWING INDEX

SHEET #	TITLE	REV#
T1.0	COVER SHEET	A
G1.0	GENERAL NOTES	A
G1.1	UNIT DESCRIPTIONS	A
G2.0	KEY MAP	A
G3.0	FDP AT FIRE STATION SHELTER	A
G3.1	FDP AT FIRE STATION RM 219 AND CITY HALL RM 224	A
G4.0	TOTAL QUANTITIES	A
C1.0	PLAN	A
C2.0	PLAN	A
C3.0	PLAN	A
C4.0	PLAN	A
C5.0	PLAN	A
C6.0	PLAN	A
C7.0	PLAN	A



IFR

REV	DESCRIPTION	DATE
A	ISSUE FOR REVIEW	230106

COVER SHEET

T1.0



(800) 478-3121
 Know what's below.
 Call before you dig.

DESIGN AND CONSTRUCTION GENERAL NOTES:

PROJECT OVERVIEW

INSTALL (2) NEW FIBER OPTIC CABLES (FOCs):

FIBER OPTIC ROUTE 1: INSTALL (1) NEW 24 STRAND FIBER OPTIC CABLE FROM NEW COMMUNICATIONS SHELTER ON BLOCK 5 OF MINERAL CREEK SUBDIVISION TO CITY OF VALDEZ FIRE STATION 1, ROOM 219. LOCATE AND EXPOSE EXISTING HANDHOLE (HH 1A) UNDERNEATH PAVEMENT NEAR THE FIRE STATION TRAINING BUILDING TO ACCESS EXISTING SPARE CONDUIT THAT LEADS TO FIRE STATION 1, ROOM 219. PLACE NEW CONDUIT FROM SHELTER TO HH 1A.

FIBER OPTIC ROUTE 2: INSTALL (1) NEW 24 STRAND FIBER OPTIC CABLE FROM NEW COMMUNICATIONS SHELTER ON BLOCK 5 OF MINERAL CREEK SUBDIVISION TO CITY OF VALDEZ CITY HALL. INSTALL NEW CONDUIT FOR FOC ROUTE EXCEPT BETWEEN EXISTING HANDHOLE 3 AND EXISTING HANDHOLE 4, WHERE EXISTING CONDUIT SHALL BE USED. INSTALL A SPARE DUCT FROM NEW COMMUNICATIONS SHELTER TO HANDHOLE 3, AND FROM HANDHOLE 4 TO HANDHOLE 6 TO ACCOMMODATE CITY OF VALDEZ FUTURE FOC COMMUNICATIONS NEEDS. INSTALL NEW BUILDING PENETRATION TO CREATE NEW PATH/RACEWAY FOR CABLE ENTRANCE INTO CITY OF VALDEZ CITY HALL BUILDING.

GENERAL NOTES:

- CALL 1-800-478-3121 FOR LOCATION OF OTHER UTILITIES PRIOR TO DIGGING. CAUTION BURIED POWER, TELEPHONE, & COMMUNICATION. CABLES ARE KNOWN TO EXIST IN THE AREA TO BE EXCAVATED. NUMEROUS EXISTING UTILITIES MAY EXIST ALONG THE EXISTING FOC ROUTE. EXISTING UTILITIES HAVE NOT BEEN FULLY DELINEATED ON THE PLAN SHEETS DUE TO THE UNRELIABILITY OF RECORD INFORMATION. VERIFY LOCATION BY OBTAINING UTILITY LOCATES PRIOR TO BEGINNING CONSTRUCTION. COORDINATE WITH FIELD ENGINEER ANY CONFLICTS BETWEEN EXISTING FOC ALIGNMENT AND EXISTING UTILITIES. USE EXTREME CAUTION & WHEN REQUIRED, POTHOLE PRIOR TO COMMENCING WORK.
- ALL WORK SHALL CONFORM TO ALASKA DOT STANDARDS SET FORTH IN "STANDARD SPECIFICATIONS FOR HIGHWAY CONSTRUCTION 2020 EDITION" DATED FEBRUARY 2020. WHERE APPLICABLE THE "TECHNICAL STANDARDS FOR ROADWAY, TRAIL AND UTILITY FACILITIES IN THE ARRC RIGHT-OF-WAY, DATED JANUARY 2014" SHALL APPLY.
- VERIFY HORIZONTAL AND VERTICAL LOCATIONS OF UTILITIES ENCOUNTERED DURING CONSTRUCTION, RECORD LOCATIONS AND CHANGES TO UTILITIES IN SURVEY NOTES AND ON AS-BUILT DRAWINGS.
- SIGN AND/OR FLAG WORK LOCATIONS WITHIN OR ADJACENT TO HIGHWAY/ROAD ROW IN ACCORDANCE WITH STATE SAFETY PROCEDURES. TRAFFIC CONTROL & SAFETY PLANS ARE TO BE PREPARED BY THE CONTRACTOR AND SUBMITTED TO ADOT FOR APPROVAL PRIOR TO START OF CONSTRUCTION.
- RETURN ALL EXCAVATED AREAS OR AREAS DISTURBED BY CONSTRUCTION BACK TO AS GOOD OR BETTER THAN ORIGINAL CONDITION. DO NOT DISTURB LOT PINS OR SURVEY MARKERS. ALL SURVEY STAKES AND LATH PLACED BY OR FOR THE CONTRACTOR ARE TO BE REMOVED AND CLEANED UP PRIOR TO COMPLETION OF CONSTRUCTION.
- SHORING AND LADDERS WILL BE REQUIRED FOR ENTERING TRENCH, WHEN TRENCH DEPTH EXCEEDS MAXIMUMS ESTABLISHED BY STATE AND OSHA.
- NO OPEN TRENCHES WILL BE LEFT UNATTENDED. ANY OPEN TRENCHES REQUIRED TO BE LEFT OPEN WHILE UNATTENDED MUST BE FENCED OFF.

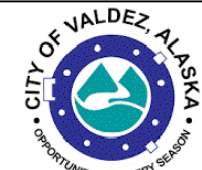
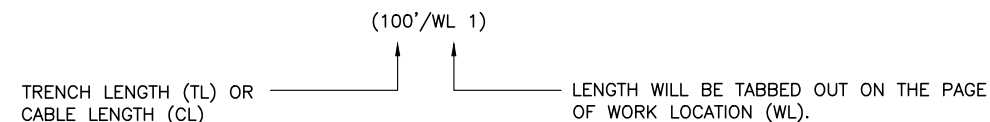
- THIS DRAWING DOES NOT REPRESENT EXISTING FACILITIES SURVEYED OR LOCATED POSITIONS. ALL ALIGNMENTS AND POSITIONS ARE APPROXIMATE AND OFFSET FOR CLARITY. SYMBOLS ARE ALSO NOT TO SCALE AND DO NOT REPRESENT TRUE DIMENSIONS OF PEDESTALS, HAND HOLES, ETC.
- DISCHARGE OF SILT LADEN RUNOFF FROM THE JOB SITE IS FORBIDDEN. USE BEST MANAGEMENT PRACTICES (BMP'S) WHERE NECESSARY.
- MAINTAIN A SUPPLY OF OIL ABSORBENT FABRIC AND APPROVED SPILL KIT ON SITE TO CLEAN UP MINOR SPILLS.
- KEEP SITE FREE OF LITTER.
- MINIMIZE OFF-SITE VEHICLE TRACKING OF SEDIMENTS. WATER EXPOSED SOILS AS NECESSARY TO CONTROL GENERATION OF DUST.
- ALL CONSTRUCTION WILL MEET ALL APPLICABLE STATE OF ALASKA, CODES, RULES AND REGULATIONS.
- THE CONTRACTOR SHALL FOLLOW ALL APPLICABLE REGULATIONS FOR NOISE, HOURS OF OPERATION AND DUST CONTROL.
- CONTAMINATED SOILS ARE NOT ANTICIPATED TO BE ENCOUNTERED THROUGHOUT THIS JOB. ANY CONTAMINATED SOILS WHICH ARE ENCOUNTERED ARE OUTSIDE THE SCOPE OF WORK FOR THIS PROJECT. IF CONTAMINATED SOILS ARE ENCOUNTERED, CEASE ANY EXCAVATION AND NOTIFY THE ENGINEER AT ONCE, WHO WILL THEN MAKE APPROPRIATE NOTIFICATION TO ADEC.
- 3" UNDERGROUND TELEPHONE LINE WARNING TAPE SHALL BE PLACED 1' ABOVE ANY CONDUIT AND CABLE PLACED IN TRENCH.
- ALL BFC CABLES SHALL BE PLACED AT A MINIMUM DEPTH OF 42" IN EASEMENTS, A MINIMUM DEPTH OF 48" IN ALL ROAD RIGHT OF WAYS OUTSIDE OF SLOPE LIMITS, AND A MINIMUM DEPTH OF 48" IN ALL ROAD RIGHT OF WAYS WHEN BELOW ROAD SURFACE OR DITCH BOTTOM.
- THESE DRAWINGS ARE FOR THE CONSTRUCTION OF NEW FIBER OPTIC CABLE/S (FOC) BEING ADDED TO NEW, AND EXISTING UTILITIES LINES. THESE DRAWINGS NEITHER IMPLY ADEQUACY NOR GIVE WARRANTY TO ANY EXISTING OR NEW LINE DESIGNS.
- DISTANCES AND STATIONING OF CONSTRUCTION WORK IS IN FEET.
- CONSTRUCTION OF THE FIBER OPTIC AERIAL CABLE SHOULD BE INSTALLED IN ACCORDANCE WITH THE RUS STANDARDS AND APPLICABLE JURISDICTIONAL STANDARDS.
- PVC PIPE SHALL BE SCHEDULE 40 U.V. RESISTANT MATERIAL.

DESIGN CRITERIA:

- APPLICABLE CODES AND STANDARDS:
NATIONAL ELECTRIC SAFETY CODE 2020 (NEC 2020)
UNITED STATES DEPARTMENT OF AGRICULTURE--
RURAL UTILITY SERVICE (RUS)
- WHERE STANDARDS OR CODES VARY OR CONFLICT, THE MOST STRINGENT SHALL BE APPLIED. NOTES ON THESE DRAWINGS SHALL SUPERCEDE IN ALL CASES.
- SOILS:
SOIL DATA FOR THE EXTENTS OF THIS RURAL LINE IS LIMITED. FOR CONSERVATIVE DESIGN, THE FOLLOWING THREE SOIL CLASSES WHERE SHALL BE USED.
SOIL CLASS 3 = DENSE SANDS & GRAVEL, HARD SILTS AND CLAY (USED IN AREAS THAT ARE LIKELY CLASS 1 OR CLASS 2 SOILS)
SOIL CLASS 6 = LOOSE TO MEDIUM DENSE FINE TO COARSE SAND, FIRM TO STIFF CLAYS & SILT (USED IN AREAS THAT ARE LIKELY CLASS 3, CLASS 4 OR CLASS 5 SOILS)
SOIL CLASS 8 = PEAT, ORGANIC SILTS, INUNDATED SILTS, FLY ASH, VERY LOOSE SANDS, VERY SOFT TO SOFT CLAYS (USED IN AREAS THAT ARE LIKELY CLASS 6, CLASS 7 OR CLASS 8 SOILS)

DESIGN CRITERIA:

- UNITS LENGTHS FOR TRENCH LINE, CABLE LENGTHS AND INSIDE CONDUITS ARE POPULATED IN THE DIRECTION OF THE FEED OR TO THE NEXT WORK LOCATION EVEN IF THE WORK LOCATION IS NOT ON THE SAME PAGE.
- TRENCH LENGTHS, CABLE LENGTHS AND AERIAL CABLE LENGTHS WILL BE IDENTIFIED ON EACH SPAN WITH THIS EXAMPLE.



COPYRIGHT NOTICE
THIS LAYOUT/DESIGN IS AN UNPUBLISHED WORK, AND NEW HORIZONS TELECOM, INC. HEREBY RESERVES ITS COMMON LAW RIGHT, PURSUANT TO TITLE 17 SECTION 2 OF THE USA CODE TO PREVENT ANY UNAUTHORIZED COPYING, PUBLICATION OR USE OF THIS DESIGN AND TO OBTAIN DAMAGES THEREFORE.

NOT FOR CONSTRUCTION

IFR

REV	DESCRIPTION	DATE
A	ISSUE FOR REVIEW	230106

**CITY OF VALDEZ
RADIO NETWORK
IMPROVEMENTS
FIBER**

DWN: MPD	DSN: RNS	APP: DRB	REV
JOB #: 22-0132-90-05			DATE: 230106
			A

**GENERAL
NOTES**

G1.0

UFO 24
FIBER OPTIC CABLE ASSEMBLY UNITS
 UNIT CONSISTS OF (1) ONE FOOT (0.305 M) OF 24 STRAND FIBER OPTIC CABLE INSTALLED IN UNDERGROUND CONDUIT AND HANDHOLES. THIS UNIT ALSO INCLUDES ANY PLACEMENT OF DUCT PLUGS, CABLE TAGS, OR ANY OTHER PLACEMENT OF ASSOCIATED MATERIAL REQUIRED IN ACCORDANCE WITH THE DETAILED PLANS AND SPECIFICATIONS. THIS UNIT DOES NOT INCLUDE CABLE CLOSURE ASSEMBLY OR CABLE SPLICING. THEY WILL BE SPECIFIED SEPARATELY.

UFO 96
FIBER OPTIC CABLE ASSEMBLY UNITS
 UNIT CONSISTS OF (1) ONE FOOT (0.305 M) OF 96 STRAND FIBER OPTIC CABLE INSTALLED IN UNDERGROUND CONDUIT AND HANDHOLES. THIS UNIT ALSO INCLUDES ANY PLACEMENT OF DUCT PLUGS, CABLE TAGS, OR ANY OTHER PLACEMENT OF ASSOCIATED MATERIAL REQUIRED IN ACCORDANCE WITH THE DETAILED PLANS AND SPECIFICATIONS. THIS UNIT DOES NOT INCLUDE CABLE CLOSURE ASSEMBLY OR CABLE SPLICING. THEY WILL BE SPECIFIED SEPARATELY.

UFO () (A)
CABLE STORAGE IN HAND HOLE ASSEMBLY UNIT
 UNIT CONSISTS OF LABOR AND MATERIAL NECESSARY TO PLACE 100 FT OF FIBER OPTIC CABLE SLACK LOOP OR FIBER OPTIC CABLE COIL IN HAND HOLE. SOME SPLICE LOCATIONS MAY REQUIRE MORE THAN 100 FOOT COILS. MEASUREMENTS ARE SPECIFIED ON THE CONSTRUCTION DRAWINGS AT EACH LOCATION.

BM92(1.25)
BURIED CONDUIT ASSEMBLY UNITS
 UNIT CONSISTS OF (1) ONE FOOT (0.305 M) OF BURIED 1.25 INCH CONDUIT PLOWED OR TRENCHED. THIS UNIT INCLUDES ALL MATERIAL AND LABOR FOR THE INSTALLING FOR EITHER TRENCHING OR PLOWING 1.25 INCH INNERDUCT. ANY OTHER UNITS NEEDED SUCH AS COMPACTION OR BORING WILL BE SPECIFIED IN THE DETAILED PLANS. IT MAY BE NECESSARY TO PROVIDE A RIPPED PATH TO ALLOW PLACEMENT AT THE REQUIRED DEPTH WHEN PLOWING AND WILL BE INCLUDED IN THE UNIT WHEN CALLED OUT TO BE PLOWED. THIS UNIT ALSO CONSISTS OF SETTING UP THE CONDUIT WITHIN THE HANDHOLE OR PEDESTAL, PLACING CONDUIT COUPLING OR DUCT PLUGS. THIS UNIT INCLUDES ALL MATERIAL AND LABOR REQUIRED IN THE REPAIR AND/OR REPLACEMENT OF STREETS, ROADS, SIDEWALKS, DRIVES, FENCES, LAWNS, SHRUBBERY, WATER MAINS, PIPES, PIPELINES AND CONTENTS. UNDERGROUND POWER AND TELECOMMUNICATIONS FACILITIES AND ANY OTHER PROPERTY DAMAGED BY THE EXCAVATING IS ALSO INCLUDED IN THIS UNIT. THE CONDUIT IS DURALINE, 1-1/4" SMOOTH OUTSIDE AND INSIDE, SDR 13.5, 8000 FOOT REEL, NO PULL ROPE, OR APPROVED EQUAL. OPTIONS DESIGNATED BY THE FOLLOWING SUFFIXES APPLY:

SUFFIX DESCRIPTION
 T TRENCHED CONDUIT 1.25 INCH HDPE
 D TRENCHED OR PLOWED DUAL CONDUIT 1.25 INCH HDPE

BM92(4)
BURIED CONDUIT ASSEMBLY UNITS
 UNIT CONSISTS OF (1) ONE FOOT (0.305 M) OF BURIED 4 INCH SCHEDULE 80 PVC CONDUIT TRENCHED. THIS UNIT INCLUDES ALL MATERIAL AND LABOR FOR THE INSTALLING FOR TRENCHING A 4 INCH SCHEDULE 80 PVC CONDUIT. ANY OTHER UNITS NEEDED SUCH AS COMPACTION OR BORING WILL BE SPECIFIED IN THE DETAILED PLANS. THIS UNIT INCLUDES ALL MATERIAL AND LABOR REQUIRED IN THE REPAIR AND/OR REPLACEMENT OF STREETS, ROADS, SIDEWALKS, DRIVES, FENCES, LAWNS, SHRUBBERY, WATER MAINS, PIPES, PIPELINES AND CONTENTS. UNDERGROUND POWER AND TELECOMMUNICATIONS FACILITIES AND ANY OTHER PROPERTY DAMAGED BY THE EXCAVATING IS ALSO INCLUDED IN THIS UNIT.
 SUFFIX DESCRIPTION.

BM92 4 (90 DEG 48")
BURIED 90 DEGREE 48" SCHEDULE 80 PVC 4" CONDUIT SWEEP ASSEMBLY UNITS
 UNIT CONSISTS OF (1) ONE BURIED 90 DEGREE 48" SCHEDULE 80 PVC 4" CONDUIT SWEEP. THIS UNIT INCLUDES ALL MATERIAL AND LABOR FOR THE INSTALLING OF (1) ONE BURIED 90 DEGREE 48" SCHEDULE 80 PVC 4" CONDUIT SWEEP.

BM60(xx)
UNDERGROUND PIPE BORE ASSEMBLY UNIT
 UNIT CONSISTS OF (1) ONE LINEAR FOOT (0.305 M) OF HIGH DENSITY POLYETHYLENE PIPE (HDPE), WITH THE INSIDE DIAMETER IN INCHES SPECIFIED IN PARENTHESES, INSTALLED IN PLACE. THIS UNIT INCLUDES BORING, PUSHING OF PIPE AND ANY EXCAVATION, BACKFILLING AND TAMPING/COMPACTING NECESSARY FOR THE INSTALLATION OF THE PIPE. THE PIPE SHALL BE INSTALLED AT THE DEPTH SPECIFIED BY THE ENGINEER OF RECORD. THE INSTALLED PIPE SHALL BE FREE OF ANY SHARP PROJECTIONS TO AVOID DAMAGE TO THE CONDUIT OR OUTER JACKET OF THE BURIED CABLE DURING ITS INSTALLATION IN THE CONTRACTOR WILL BE COMPENSATED FOR LABOR AND MATERIAL FOR THE BURIED CONDUIT AND CABLE UNDER SEPARATE UNITS. 4 INCH HDPE BORE PIPE MUST BE SDR 11. 1.25 INCH BORE PIPE MUST BE SDR 11.

UD(1.25)v
TWO (2) VACANT 1.25" DUCTS PLACED IN CONDUIT
 UNIT CONSISTS OF (1) ONE FOOT (0.305 M) OF ALL MATERIAL AND LABOR REQUIRED FOR THE INSTALLING AND PLACEMENT OF (2) TWO 1.25 INCH INNER DUCTS INSIDE A 4' CONDUIT.

WBM 92
REARRANGE/LOWER EXISTING CONDUIT
 UNIT CONSISTS OF LABOR AND EQUIPMENT USE TO REARRANGE OR LOWER (1) ONE FOOT (0.305 M) OF EXISTING CONDUIT.

BHF(xx)
BURIED HANDHOLE ASSEMBLY UNITS
 UNIT CONSISTS OF LABOR AND MATERIAL FOR (1) ONE BURIED HANDHOLE INSTALLED IN PLACE, INCLUDING THE BASE, TOP COVER AND CABLE RACKING HARDWARE, GRAVEL, WITH EMS LOCATOR . THE HANDHOLE SHALL BE INSTALLED AS SPECIFIED BY THE MANUFACTURERS INSTRUCTIONS.

WBHF
REARRANGEMENT OF HAND HOLE OR SPLICE VAULT
 UNIT CONSISTS OF THE REARRANGEMENT OF (1) ONE EXISTING BURIED HANDHOLE OR SPLICE VAULT. THIS UNIT COVERS LABOR TO EITHER MOVE, RE-LEVEL OR CHANGE OUT TO DIFFERENT SIZE HAND HOLE OR SPLICE VAULT. THE HANDHOLE SHALL BE REARRANGED OR RE-INSTALLED AS SPECIFIED BY THE MANUFACTURERS INSTRUCTIONS.

ZBHF
SALVAGE AND REUSE HANDHOLE OR SPLICE VAULT
 UNIT CONSISTS OF LABOR TO REMOVE AND SALVAGE (1) ONE EXISTING BURIED HANDHOLE OR SPLICE VAULT. SALVAGED HANDHOLES WILL BE RETURNED TO CUSTOMER OR REUSED AT ANOTHER LOCATION ON PROJECT SPECIFIED BY THE ENGINEER.

BM53
CABLE LOCATE WARNING SIGN ASSEMBLY UNIT
 UNIT CONSISTS OF (1) ONE STAKED WARNING SIGN, IN PLACE AS SHOWN ON THE CONSTRUCTION DRAWINGS. THIS UNIT INCLUDES ALL LABOR AND MATERIAL TO INSTALL THE STAKED SIGN. TYPICAL IS CARSONITE POS 72 INCH, ORANGE, WITH LABEL.

R1-15
CLEAR AND GRUB ROW 15' WIDE UNIT
 UNIT CONSIST OF 1 FOOT (0.305 M) X 15 FOOT WIDE CLEARING AND GRUBBING ON EACH SIDE OF POLE LINE OR MARKED ROW OR EASEMENT.

NOTE 1: TREES THAT ARE FELLED THAT ARE 6 INCH DIAMETER AT BREAST HEIGHT OR GREATER SHALL BE CUT TO 8 FOOT LENGTHS AND NEATLY STACKED ON THE SIDE OF THE RIGHT-OF-WAY FOR THE LANDOWNER, OR AS DIRECTED BY FIELD ENGINEER.

NOTE 2: TREES LESS THAN 6 INCHES AT BREAST HEIGHT, BRUSH, BRANCHES, AND REFUSE FROM THE CLEARING OPERATIONS SHALL BE MECHANICALLY CLEARED WITH A HYDRO AX OR CHIPPER AND DISPOSED OF AS DIRECTED BY THE FIELD ENGINEER.

NOTE 3: ALL STUMPS WILL BE GRINDED OFF BELOW GROUND LEVEL.

ASPHALT REPAIR
ASPHALT REPAIR ASSEMBLY UNIT
 UNIT CONSISTS OF (1) ONE SQUARE FOOT OF CUTTING AND PATCHING ASPHALT WHERE NEEDED TO TIE IN BORES OR TO OPEN TRENCH ACROSS PARKING LOT/DRIVEWAY.

BM70
TRENCH COMPACTION
 UNIT CONSISTS OF (1) ONE FOOT (0.305 M) OF ALL LABOR AND EQUIPMENT REQUIRED TO COMPACT TRENCH IN 1' LIFTS.

LBR PLC
LABOR UNIT FOR 3 CREW MEMBER LINE CREW & EQUIPMENT
 UNIT CONSISTS OF LABOR AND EQUIPMENT FOR (1) ONE FOREMAN AND (2) TWO JOURNEYMAN LINEMAN.

WHO-1
FUSION SPLICE (ONE FIBER)
 UNIT CONSISTS OF MATERIAL AND LABOR TO REARRANGE (1) ONE FIBER OPTIC FUSION SPLICE.

HO-1
FUSION SPLICE (ONE FIBER)
 UNIT CONSISTS OF MATERIAL AND LABOR FOR (1) ONE FIBER OPTIC FUSION SPLICE.

HBFO 6.5
FIBER SPLICE CLOSURE 6.5" (AERIAL OR BURIED)
 UNIT CONSISTS OF A 6.5 INCH X 22 INCH FIBER OPTIC SPLICE CASE INCLOSURE AND LABOR REQUIRED FOR INSTALLATION. SPLICE TRAYS AND FUSION SPLICES WILL BE CALLED OUT AS SEPARATE UNIT.

HBFO TRAY
SPLICE TRAY ASSEMBLY UNIT
 UNIT CONSISTS OF (1) ONE 36 CT SPLICE TRAY AND LABOR REQUIRED FOR INSTALLATION.

CAT FF
CABLE ACCEPTANCE TEST BI-DIRECTIONAL TESTING
 UNIT CONSISTS OF OTDR BI DIRECTIONAL AND OLTS FIBER OPTIC TESTING.

FDH 1RU
FIBER DISTRIBUTION HOUSING CCH-01U
 CONSIST OF 1 RACK UNIT FIBER DISTRIBUTION HOUSING.

FDH 2RU
FIBER DISTRIBUTION HOUSING CCH-01U
 CONSIST OF 2 RACK UNIT FIBER DISTRIBUTION HOUSING.

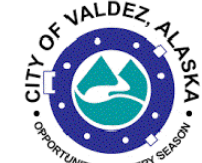
FDH 4RU
FIBER DISTRIBUTION HOUSING CCH-01U
 CONSIST OF 4 RACK UNIT FIBER DISTRIBUTION HOUSING.

FDH CASSETTE 12
12 STR SPLICE CASSETTS CCH-CS12-A9-P00RE
 CONSIST OF 1 12 STRAND SINGLE MODE LC SPLICE CASSETTE.

FDH CASSETTE 24
24 STR SPLICE CASSETTS CCH-CS12-A9-P00RE
 CONSIST OF 1 24 STRAND SINGLE MODE LC SPLICE CASSETTE.

12U WMC
12U WALL MOUNT CABINET SWM12RUPL-26-26
 CONSIST OF 1 WALL MOUNT CABINET 12 RACK UNIT ENCLOSURE.

CCH-BLNK
CLOSET CONNECT HOUSING (CCH) BLANK PANEL
 CONSIST OF 1 CLOSET CONNECT HOUSING (CCH) BLANK PANEL.



COPYRIGHT NOTICE
 THIS LAYOUT/DESIGN IS AN UNPUBLISHED WORK, AND NEW HORIZONS TELECOM, INC. HEREBY RESERVES ITS COMMON LAW RIGHT, PURSUANT TO TITLE 17 SECTION 2 OF THE USA CODE TO PREVENT ANY UNAUTHORIZED COPYING, PUBLICATION OR USE OF THIS DESIGN AND TO OBTAIN DAMAGES THEREFORE.

NOT FOR CONSTRUCTION

IFR

REV	DESCRIPTION	DATE
A	ISSUE FOR REVIEW	230106

CITY OF VALDEZ
 RADIO NETWORK
 IMPROVEMENTS
 FIBER

DWN: MPD	DSN: RNS	APP: DRB	REV
JOB #: 22-0132-90-05			DATE: 230106
			A

UNIT
 DESCRIPTIONS

G1.1



COPYRIGHT NOTICE
 THIS LAYOUT/DESIGN IS AN UNPUBLISHED WORK, AND NEW HORIZONS TELECOM, INC. HEREBY RESERVES ITS COMMON LAW RIGHT, PURSUANT TO TITLE 17 SECTION 2 OF THE USA CODE TO PREVENT ANY UNAUTHORIZED COPYING, PUBLICATION OR USE OF THIS DESIGN AND TO OBTAIN DAMAGES THEREFORE.

NOT FOR CONSTRUCTION

IFR

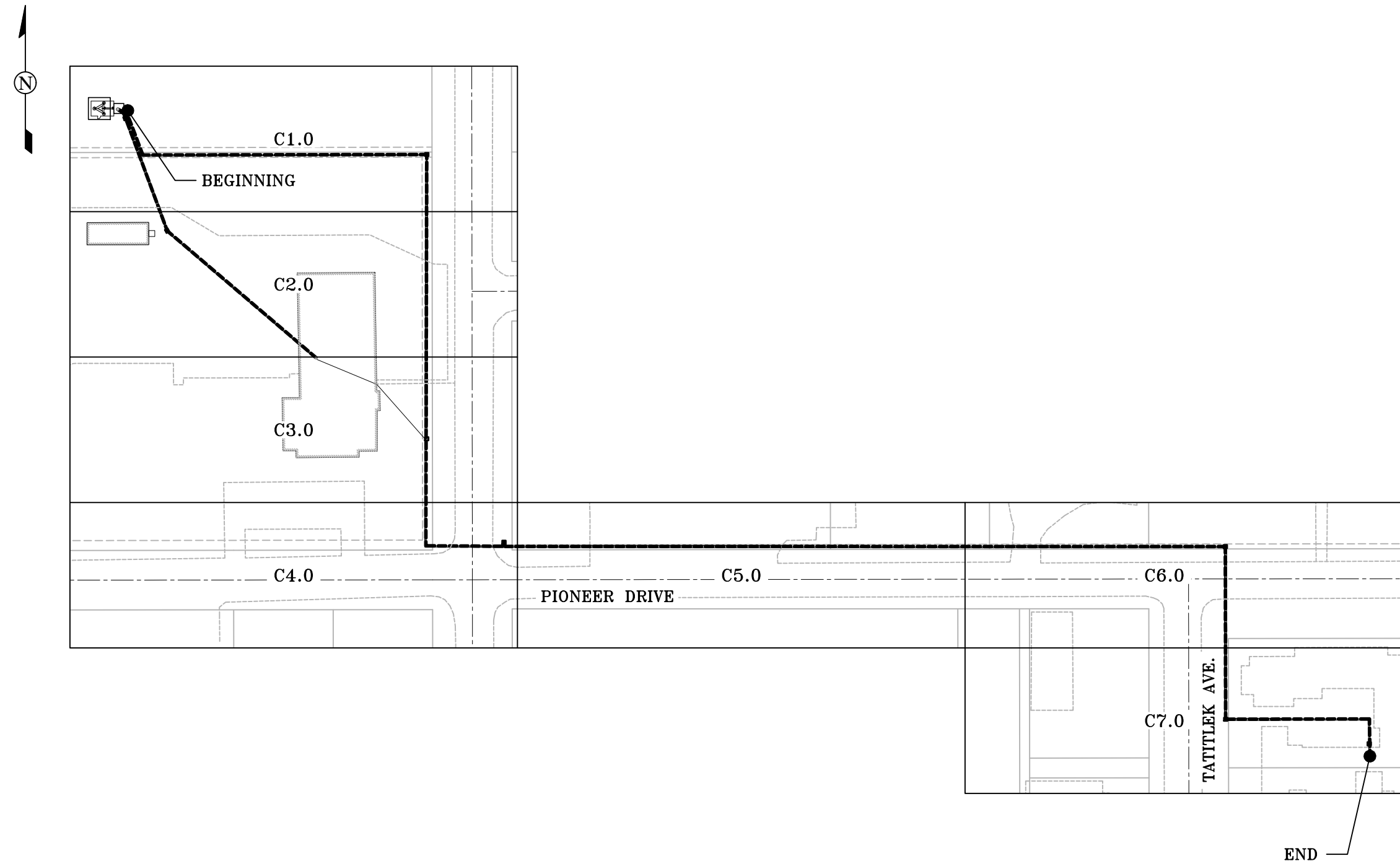
REV	DESCRIPTION	DATE
A	ISSUE FOR REVIEW	230106

**CITY OF VALDEZ
 RADIO NETWORK
 IMPROVEMENTS
 FIBER**

DWN: MPD	DSN: RNS	APP: DRB	REV
JOB #: 22-0132-90-05			DATE: 230106
			A

KEY MAP

G2.0

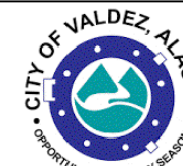


1
 G2.0 **KEY MAP**
 SCALE: NTS

FDP AT SHELTER AT FIRE STATION CVDZ01, 1-288

CCH-04U

24 STRAND CASSETTE		24 STRAND CASSETTE		24 STRAND CASSETTE		24 STRAND CASSETTE		24 STRAND CASSETTE		24 STRAND CASSETTE		24 STRAND CASSETTE		24 STRAND CASSETTE		24 STRAND CASSETTE		24 STRAND CASSETTE		24 STRAND CASSETTE		24 STRAND CASSETTE		24 STRAND CASSETTE	
1	13	25	37	49	61	73	85	97	109	121	133	145	157	169	181	193	205	217	229	241	253	265	277		
2	14	26	38	50	62	74	86	98	110	122	134	146	158	170	182	194	206	218	230	242	254	266	278		
3	15	27	39	51	63	75	87	99	111	123	135	147	159	171	183	195	207	219	231	243	255	267	279		
4	16	28	40	52	64	76	88	100	112	124	136	148	160	172	184	196	208	220	232	244	256	268	280		
5	17	29	41	53	65	77	89	101	113	125	137	149	161	173	185	197	209	221	233	245	257	269	281		
6	18	30	42	54	66	78	90	102	114	126	138	150	162	174	186	198	210	222	234	246	258	270	282		
7	19	31	43	55	67	79	91	103	115	127	139	151	163	175	187	199	211	223	235	247	259	271	283		
8	20	32	44	56	68	80	92	104	116	128	140	152	164	176	188	200	212	224	236	248	260	272	284		
9	21	33	45	57	69	81	93	105	117	129	141	153	165	177	189	201	213	225	237	249	261	273	285		
10	22	34	46	58	70	82	94	106	118	130	142	154	166	178	190	202	214	226	238	250	262	274	286		
11	23	35	47	59	71	83	95	107	119	131	143	155	167	179	191	203	215	227	239	251	263	275	287		
12	24	36	48	60	72	84	96	108	120	132	144	156	168	180	192	204	216	228	240	252	264	276	288		
CVDZ01, 1-12(TO FIRE STATION RM 219)		VACANT	VACANT	VACANT	VACANT	VACANT	VACANT	VACANT	VACANT	VACANT	VACANT	VACANT	VACANT	VACANT	VACANT	VACANT	VACANT	VACANT	VACANT	VACANT	VACANT	VACANT	VACANT	VACANT	VACANT
CVDZ01, 13-24(CITY HALL RM 224)																									



COPYRIGHT NOTICE
 THIS LAYOUT/DESIGN IS AN UNPUBLISHED WORK, AND NEW HORIZONS TELECOM, INC. HEREBY RESERVES ITS COMMON LAW RIGHT, PURSUANT TO TITLE 17 SECTION 2 OF THE USA CODE TO PREVENT ANY UNAUTHORIZED COPYING, PUBLICATION OR USE OF THIS DESIGN AND TO OBTAIN DAMAGES THEREFORE.

NOT FOR CONSTRUCTION

IFR

REV	DESCRIPTION	DATE
A	ISSUE FOR REVIEW	230106

**CITY OF VALDEZ
 RADIO NETWORK
 IMPROVEMENTS
 FIBER**

DWN: MPD	DSN: RNS	APP: DRB	REV
JOB #: 22-0132-90-05			DATE: 230106
			A

**FDP AT FIRE
 STATION SHELTER**

G3.0



COPYRIGHT NOTICE
 THIS LAYOUT/DESIGN IS AN UNPUBLISHED WORK, AND NEW HORIZONS TELECOM, INC. HEREBY RESERVES ITS COMMON LAW RIGHT, PURSUANT TO TITLE 17 SECTION 2 OF THE USA CODE TO PREVENT ANY UNAUTHORIZED COPYING, PUBLICATION OR USE OF THIS DESIGN AND TO OBTAIN DAMAGES THEREFORE.

NOT FOR CONSTRUCTION

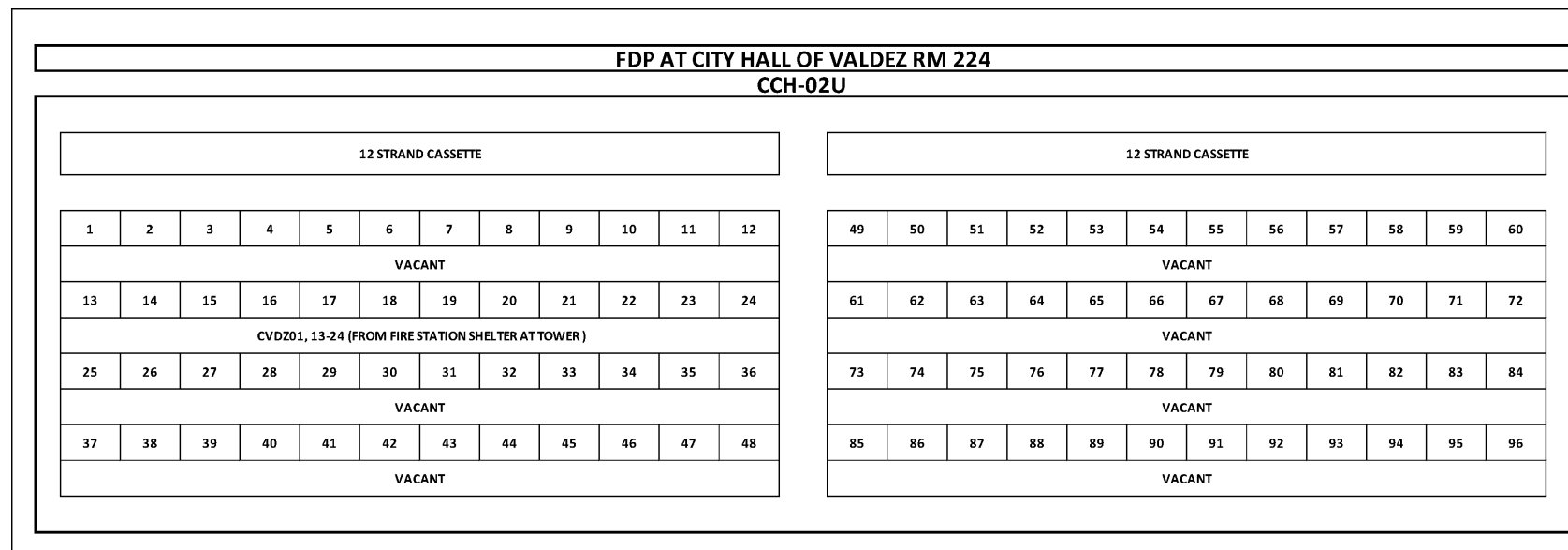
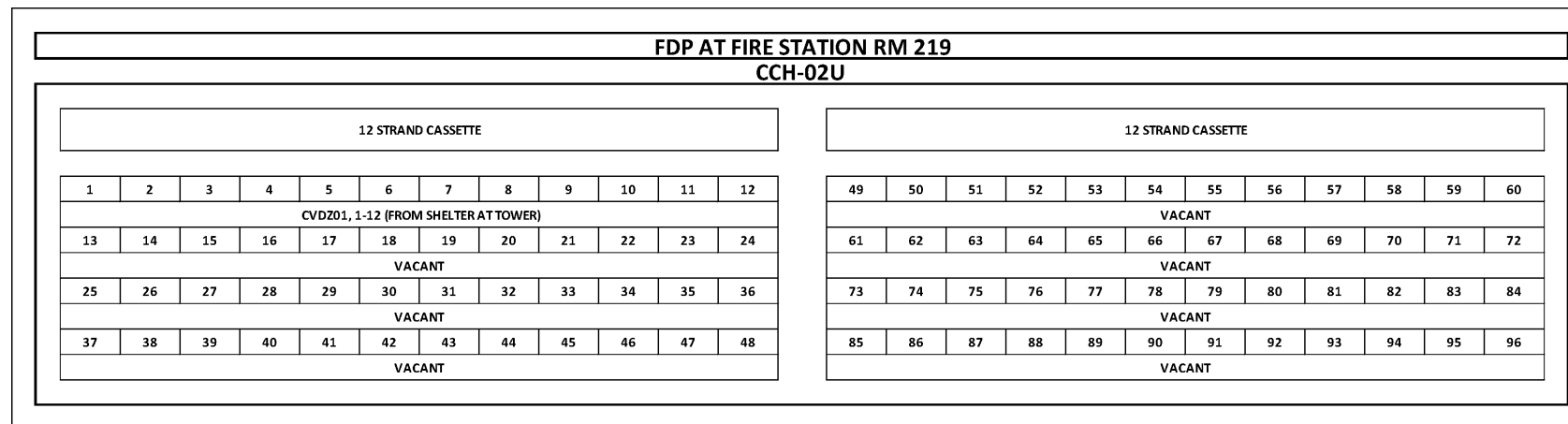
IFR

REV	DESCRIPTION	DATE
A	ISSUE FOR REVIEW	230106

**CITY OF VALDEZ
 RADIO NETWORK
 IMPROVEMENTS
 FIBER**

DWN: MPD	DSN: RNS	APP: DRB	REV
JOB #: 22-0132-90-05			DATE: 230106
			A

**FDP AT FIRE STATION
 RM 219 AND CITY
 HALL RM 224
 G3.1**





COPYRIGHT NOTICE
 THIS LAYOUT/DESIGN IS AN UNPUBLISHED WORK, AND NEW HORIZONS TELECOM, INC. HEREBY RESERVES ITS COMMON LAW RIGHT, PURSUANT TO TITLE 17 SECTION 2 OF THE USA CODE TO PREVENT ANY UNAUTHORIZED COPYING, PUBLICATION OR USE OF THIS DESIGN AND TO OBTAIN DAMAGES THEREFORE.

NOT FOR CONSTRUCTION

IFR

REV	DESCRIPTION	DATE
A	ISSUE FOR REVIEW	230106

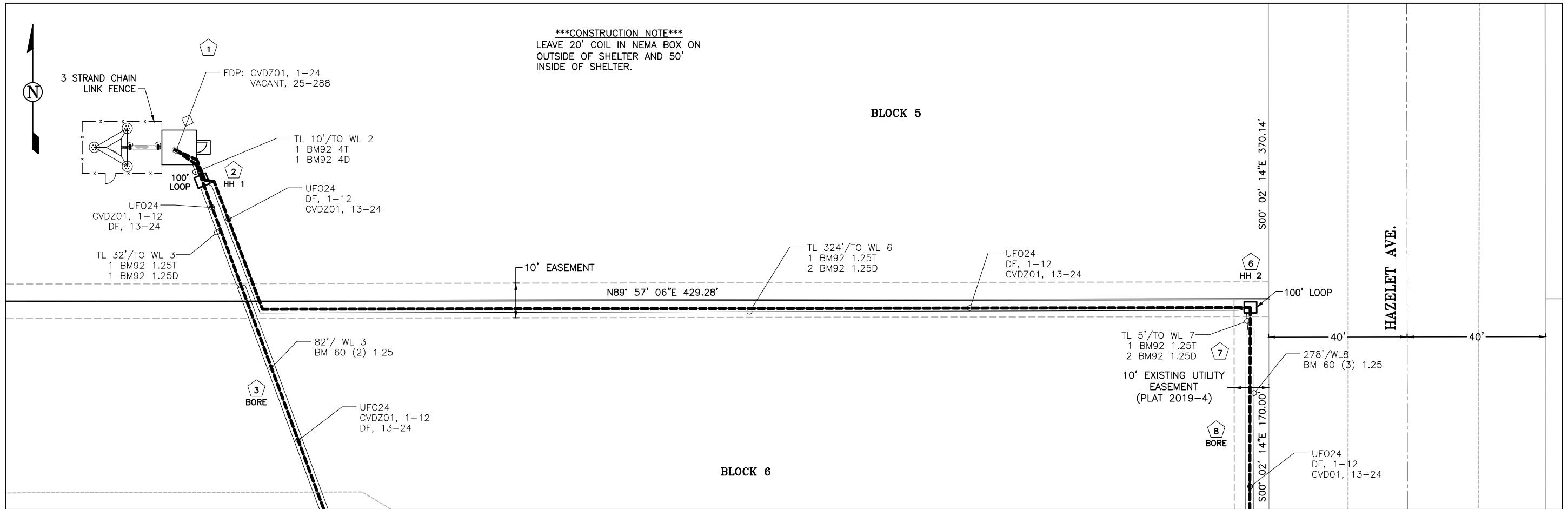
**CITY OF VALDEZ
 RADIO NETWORK
 IMPROVEMENTS
 FIBER**

DWN: MPD	DSN: RNS	APP: DRB	REV
JOB #: 22-0132-90-05			DATE: 230106
			A

**TOTAL
 QUANTITIES**

G4.0

ITEM #	UNIT DESIGNATION	DESCRIPTION	WL	EST. QTY	WL	EST. QTY	WL	EST. QTY	Total EST. QTY	ITEM #	UNIT DESIGNATION	DESCRIPTION	WL	EST. QTY	WL	EST. QTY	WL	EST. QTY	Total EST. QTY
1	UFO 24	24 FIBER OPTIC CABLE PLACED IN CONDUIT							2518	18	BM 53	CABLE LOCATE WARNING SIGN							0
2	UFO 24 (A)	CABLE STORAGE IN HANDHOLE (SLACK)							900	19	RI-15	CLEAR AND GRUB ROW 15' WIDE							230
3	UFO 96	96 FIBER OPTIC CABLE PLACED IN CONDUIT							0	20	ASPHALT REPAIR	REMOVE AND REPLACE ASPHALT (SQ FT)							30
4	UFO 96 (A)	CABLE STORAGE IN HANDHOLE (SLACK)							0	21	BM 70	TRENCH COMPACTION (1' LIFTS)							12
5	BM 92 1.25T	1.25" SDR 13.5 INNER DUCT-TRENCHED							962	22	LBR PLC	LABOR UNIT FOR 3 CREW MEMBER LINE CREW & EQUIP.							24
6	BM 92 1.25D	1.25" SDR 13.5 INNER DUCT-DUAL							1667	23	W HO 1	FIBER OPTIC CABLE FUSION SPLICE REARRANGEMENT							0
7	BM 92 4	4' SCHEDULE 80 PVC CONDUIT							20	24	HO-1	FUSION SPLICE (ONE FIBER)							48
8	BM 92 4 (90° X 48°)	4" x 90° x 48" SCHEDULE 80 PVC							2	25	HBFO 6.5	FIBER SPLICE CLOSURE 6.5" (AERIAL OR BURIED)							0
9	BM 60 (4)(D)	4" (O.D.) HDPE BORE 3.5 (I.D.)							0	26	HBFO TRAY	SPLICE TRAY							0
10	BM 60 (2)(1.25)(D)	2 X 1.25" SDR 11 HDPE BORE							132	27	CAT FF	CABLE ACCEPTANCE BI DIRECTIONAL TESTING							24
11	BM 60 (3)(1.25)(D)	3 X 1.25" SDR 11 HDPE BORE							708	28	FDH 1RU	48 FIBER DISTRIBUTION HOUSING CCH-01U							2
12	UD(1.25)V	TWO (2) VACANT 1.25" DUCTS PLACED IN CONDUIT							50	29	FDH 2RU	96 FIBER DISTRIBUTION HOUSING CCH-02U							0
13	WBM 92	REARRANGE/LOWER EXISTING CONDUIT							0	30	FDH 4RU	288 FIBER DISTRIBUTION HOUSING CCH-04U							1
14	BHF 1	36" X 36" X 48" HAND HOLE							5	31	FDH CASSETTE 12	12 STR SPLICE CASSETTS CCH-CS12-A9-P00RE							2
15	BM 92 2I	2" GALVANIZED STEEL CONDUIT							50	32	FDH CASSETTE 24	24 STR SPLICE CASSETTS-CS24-A9-P00RE							2
16	WBHF	REARRANGMENT OF HAND HOLE OR SPLICE VAULT							1	33	12U WMC	12U WALL MOUNT CABINET SWM12RUPL-26-26							0
17	ZBHF	SALVAGE AND REUSE HAND HOLE OR SPLICE VAULT							0	34	CCH-BLNK	CLOSET CONNECT HOUSING (CCH) BLANK PANEL							24



MATCHLINE-SHEET C2.0

NOTES:

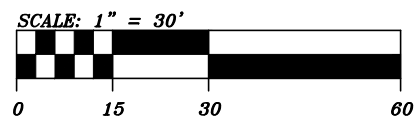
- FOOTAGES ARE APPROXIMATE.
- SYMBOLS ON DRAWINGS ARE NOT TO SCALE.

ITEM #	UNIT DESIGNATION	DESCRIPTION	WL	EST. QTY	WL	EST. QTY	WL	EST. QTY	Total EST. QTY
1	UFO 24	24 FIBER OPTIC CABLE PLACED IN CONDUIT	2	160	6	324			484
2	UFO 24 (A)	CABLE STORAGE IN HANDHOLE (SLACK)	2	200	6	100			300
3	UFO 96	96 FIBER OPTIC CABLE PLACED IN CONDUIT							0
4	UFO 96 (A)	CABLE STORAGE IN HANDHOLE (SLACK)							0
5	BM 92 1.25T	1.25" SDR 13.5 INNER DUCT-TRENCHED	3	32	6	324	7	5	361
6	BM 92 1.25D	1.25" SDR 13.5 INNER DUCT-DUAL	3	32	6	648	7	10	690
7	BM 92 4	4" SCHEDULE 80 PVC CONDUIT	2	20					20
8	BM 92 4 (90° X 48")	4" x 90° x 48" SCHEDULE 80 PVC	2	2					2
9	BM 60 (4)(D)	4" (O.D.) HDPE BORE 3.5 (I.D.)							0
10	BM 60 (2)(1.25)(D)	2 X 1.25" SDR 11 HDPE BORE							0
11	BM 60 (3)(1.25)(D)	3 X 1.25" SDR 11 HDPE BORE							0
12	UD(1.25)V	TWO (2) VACANT 1.25" DUCTS PLACED IN CONDUIT	2	50					50
13	WBM 92	REARRANGE/LOWER EXISTING CONDUIT							0
14	BHF 1	36" X 36" X 48" HAND HOLE	2	1	6	1			2
15	BM 92 2I	2" GALVANIZED STEEL CONDUIT							0
16	WBHF	REARRANGMENT OF HAND HOLE OR SPLICE VAULT							0
17	ZBHF	SALVAGE AND REUSE HAND HOLE OR SPLICE VAULT							0

ITEM #	UNIT DESIGNATION	DESCRIPTION	WL	EST. QTY	WL	EST. QTY	WL	EST. QTY	Total EST. QTY
18	BM 53	CABLE LOCATE WARNING SIGN							0
19	R1-15	CLEAR AND GRUB ROW 15' WIDE							0
20	ASPHALT REPAIR	REMOVE AND REPLACE ASPHALT (SQ FT)							0
21	BM 70	TRENCH COMPACTION (1' LIFTS)							0
22	LBR PLC	LABOR UNIT FOR 3 CREW MEMBER LINE CREW & EQUIP.							0
23	W HO 1	FIBER OPTIC CABLE FUSION SPLICE REARRANGEMENT							0
24	HO-1	FUSION SPLICE (ONE FIBER)	1	24					24
25	HBFO 6.5	FIBER SPLICE CLOSURE 6.5" (AERIAL OR BURIED)							0
26	HBFO TRAY	SPLICE TRAY							0
27	CAT FF	CABLE ACCEPTANCE BI DIRECTIONAL TESTING	1	24					24
28	FDH 1RU	48 FIBER DISTRIBUTION HOUSING CCH-O1U							0
29	FDH 2RU	96 FIBER DISTRIBUTION HOUSING CCH-O2U							0
30	FDH 4RU	288 FIBER DISTRIBUTION HOUSING CCH-O4U	1	1					1
31	FDH CASSETTE 12	12 STR SPLICE CASSETTS CCH-CS12-A9-P00RE							0
32	FDH CASSETTE 24	24 STR SPLICE CASSETTS-CS24-A9-P00RE	1	2					2
33	12U WMC	12U WALL MOUNT CABINET SWM12RUPL-26-26							0
34	CCH-BINK	CLOSET CONNECT HOUSING(CCH) BLANK PANEL	1	10					10

LEGEND

- HAND HOLE
- UFO 24
- EASEMENT
- EDGE OF ROAD / DRIVEWAY
- PROPERTY LINE / ROW
- WORK LOCATION



COPYRIGHT NOTICE

THIS LAYOUT/DESIGN IS AN UNPUBLISHED WORK, AND NEW HORIZONS TELECOM, INC. HEREBY RESERVES ITS COMMON LAW RIGHT, PURSUANT TO TITLE 17 SECTION 2 OF THE USA CODE TO PREVENT ANY UNAUTHORIZED COPYING, PUBLICATION OR USE OF THIS DESIGN AND TO OBTAIN DAMAGES THEREFORE.



NOT FOR CONSTRUCTION

IFR

REV	DESCRIPTION	DATE
A	ISSUE FOR REVIEW	230106

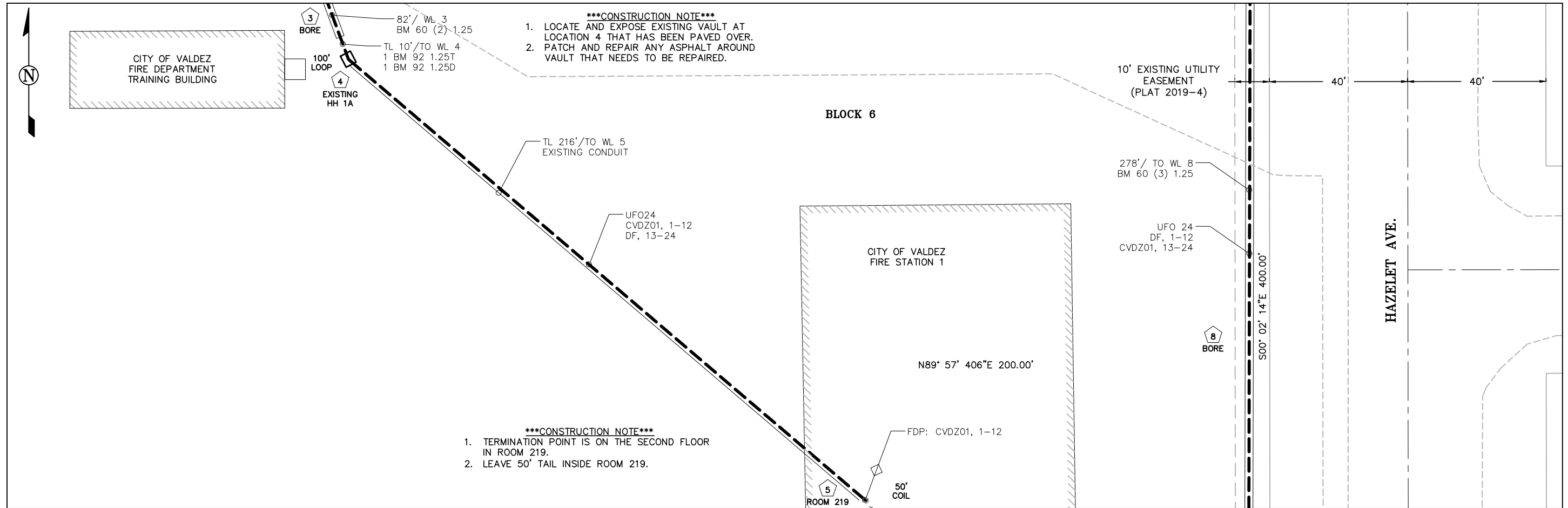
**CITY OF VALDEZ
RADIO NETWORK
IMPROVEMENTS
FIBER**

DWN: MPD	DSN: RNS	APP: DRB	REV A
JOB #: 22-0132-90-05			DATE: 230106

PLAN

C1.0

MATCHLINE-SHEET C1.0



MATCHLINE-SHEET C3.0

NOTES:

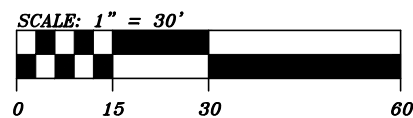
- FOOTAGES ARE APPROXIMATE.
- SYMBOLS ON DRAWINGS ARE NOT TO SCALE.

ITEM #	UNIT DESIGNATION	DESCRIPTION	WL	EST. QTY	WL	EST. QTY	WL	EST. QTY	Total EST. QTY
1	UFO 24	24 FIBER OPTIC CABLE PLACED IN CONDUIT	4	124	5	266			390
2	UFO 24(A)	CABLE STORAGE IN HANDHOLE (SLACK)	4	100					100
3	UFO 96	96 FIBER OPTIC CABLE PLACED IN CONDUIT							0
4	UFO 96(A)	CABLE STORAGE IN HANDHOLE (SLACK)							0
5	BM 92 1.25T	1.25" SDR 13.5 INNER DUCT-TRENCHED	4	10					10
6	BM 92 1.25D	1.25" SDR 13.5 INNER DUCT-DUAL	4	10					10
7	BM 92 4	4" SCHEDULE 80 PVC CONDUIT							0
8	BM 92 4(90° X 48")	4" x 90° x 48" SCHEDULE 80 PVC							0
9	BM 60(4)(D)	4" (O.D.) HDPE BORE 3.5 (I.D.)							0
10	BM 60(2)(1.25)(D)	2 X 1.25" SDR 11 HDPE BORE	3	82					82
11	BM 60(3)(1.25)(D)	3 X 1.25" SDR 11 HDPE BORE							0
12	UD(1.25)V	TWO (2) VACANT 1.25" DUCTS PLACED IN CONDUIT							0
13	WBM 92	REARRANGE/LOWER EXISTING CONDUIT							0
14	BHF 1	36" X 36" X 48" HAND HOLE							0
15	BM 92 2I	2" GALVANIZED STEEL CONDUIT							0
16	WBHF	REARRANGMENT OF HAND HOLE OR SPLICE VAULT	4	1					1
17	ZBHF	SALVAGE AND REUSE HAND HOLE OR SPLICE VAULT							0

ITEM #	UNIT DESIGNATION	DESCRIPTION	WL	EST. QTY	WL	EST. QTY	WL	EST. QTY	Total EST. QTY
18	BM 53	CABLE LOCATE WARNING SIGN							0
19	R1-15	CLEAR AND GRUB ROW 15' WIDE							0
20	ASPHALT REPAIR	REMOVE AND REPLACE ASPHALT (SQ FT)	4	20					20
21	BM 70	TRENCH COMPACTION (1' LIFTS)							0
22	LBR PLC	LABOR UNIT FOR 3 CREW MEMBER LINE CREW & EQUIP.	4	4					4
23	W HO 1	FIBER OPTIC CABLE FUSION SPLICE REARRANGEMENT							0
24	HO-1	FUSION SPLICE (ONE FIBER)	5	12					12
25	HBFO 6.5	FIBER SPLICE CLOSURE 6.5" (AERIAL OR BURIED)							0
26	HBFO TRAY	SPLICE TRAY							0
27	CAT FF	CABLE ACCEPTANCE BI DIRECTIONAL TESTING							0
28	FDH 1RU	48 FIBER DISTRIBUTION HOUSING CCH-O1U	5	1					1
29	FDH 2RU	96 FIBER DISTRIBUTION HOUSING CCH-O2U							0
30	FDH 4RU	288 FIBER DISTRIBUTION HOUSING CCH-O4U							0
31	FDH CASSETTE 12	12 STR SPLICE CASSETTS CCH-CS12-A9-P00RE	5	1					1
32	FDH CASSETTE 24	24 STR SPLICE CASSETTS-CS24-A9-P00RE							0
33	12U WMC	12U WALL MOUNT CABINET SWM12RUP1-26-26							0
34	CCH-BINK	CLOSET CONNECT HOUSING(CCH) BLANK PANEL	5	7					7

LEGEND

- HAND HOLE
- UFO 24
- EASEMENT
- EDGE OF ROAD / DRIVEWAY
- PROPERTY LINE / ROW
- WORK LOCATION



COPYRIGHT NOTICE

THIS LAYOUT/DESIGN IS AN UNPUBLISHED WORK, AND NEW HORIZONS TELECOM, INC. HEREBY RESERVES ITS COMMON LAW RIGHT, PURSUANT TO TITLE 17 SECTION 2 OF THE USA CODE TO PREVENT ANY UNAUTHORIZED COPYING, PUBLICATION OR USE OF THIS DESIGN AND TO OBTAIN DAMAGES THEREFORE.



NOT FOR CONSTRUCTION

IFR

REV	DESCRIPTION	DATE
A	ISSUE FOR REVIEW	230106

**CITY OF VALDEZ
RADIO NETWORK
IMPROVEMENTS
FIBER**

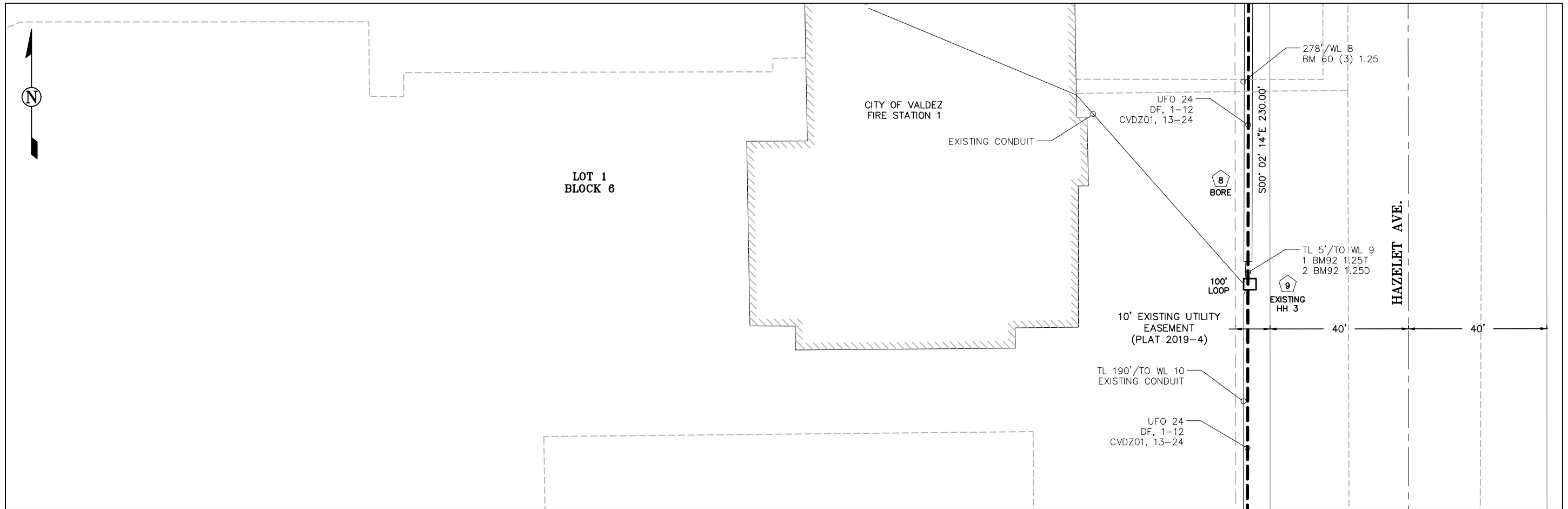
DWN: MPD	DSN: RNS	APP: DRB	REV A
JOB #: 22-0132-90-05			DATE: 230106

PLAN

C2.0

MATCHLINE-SHEET C2.0

MATCHLINE-SHEET C4.0

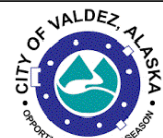


NOTES:

- FOOTAGES ARE APPROXIMATE.
- SYMBOLS ON DRAWINGS ARE NOT TO SCALE.

ITEM #	UNIT DESIGNATION	DESCRIPTION	WL	EST. QTY	WL	EST. QTY	WL	EST. QTY	Total EST. QTY
1	UFO 24	24 FIBER OPTIC CABLE PLACED IN CONDUIT	9	288					288
2	UFO 24 (A)	CABLE STORAGE IN HANDHOLE (SLACK)	9	100					100
3	UFO 96	96 FIBER OPTIC CABLE PLACED IN CONDUIT							0
4	UFO 96 (A)	CABLE STORAGE IN HANDHOLE (SLACK)							0
5	BM 92 1.25T	1.25" SDR 13.5 INNER DUCT-TRENCHED	9	5					5
6	BM 92 1.25D	1.25" SDR 13.5 INNER DUCT-DUAL	9	10					10
7	BM 92 4	4" SCHEDULE 80 PVC CONDUIT							0
8	BM 92 4 (90° X 48")	4" x 90° x 48" SCHEDULE 80 PVC							0
9	BM 60 (4)(D)	4" (O.D.) HDPE BORE 3.5 (L.D.)							0
10	BM 60 (2)(1.25)(D)	2 X 1.25" SDR 11 HDPE BORE							0
11	BM 60 (3)(1.25)(D)	3 X 1.25" SDR 11 HDPE BORE	8	278					278
12	UD(1.25)V	TWO (2) VACANT 1.25" DUCTS PLACED IN CONDUIT							0
13	WBM 92	REARRANGE/LOWER EXISTING CONDUIT							0
14	BHF 1	36" X 36" X 48" HAND HOLE							0
15	BM 92 2I	2" GALVANIZED STEEL CONDUIT							0
16	WBHF	REARRANGMENT OF HAND HOLE OR SPLICE VAULT							0
17	ZBHF	SALVAGE AND REUSE HAND HOLE OR SPLICE VAULT							0

ITEM #	UNIT DESIGNATION	DESCRIPTION	WL	EST. QTY	WL	EST. QTY	WL	EST. QTY	Total EST. QTY
18	BM 53	CABLE LOCATE WARNING SIGN							0
19	R1-15	CLEAR AND GRUB ROW 15' WIDE							0
20	ASPHALT REPAIR	REMOVE AND REPLACE ASPHALT (SQ FT)							0
21	BM 70	TRENCH COMPACTION (1' LIFTS)							0
22	LBR PLC	LABOR UNIT FOR 3 CREW MEMBER LINE CREW & EQUIP.							0
23	W HO 1	FIBER OPTIC CABLE FUSION SPLICE REARRANGEMENT							0
24	HO-1	FUSION SPLICE (ONE FIBER)							0
25	HBFO 6.5	FIBER SPLICE CLOSURE 6.5" (AERIAL OR BURIED)							0
26	HBFO TRAY	SPLICE TRAY							0
27	CAT FF	CABLE ACCEPTANCE BI DIRECTIONAL TESTING							0
28	FDH 1RU	48 FIBER DISTRIBUTION HOUSING CCH-O1U							0
29	FDH 2RU	96 FIBER DISTRIBUTION HOUSING CCH-O2U							0
30	FDH 4RU	288 FIBER DISTRIBUTION HOUSING CCH-O4U							0
31	FDH CASSETTE 12	12 STR SPLICE CASSETTS CCH-CS12-A9-P00RE							0
32	FDH CASSETTE 24	24 STR SPLICE CASSETTS-CS24-A9-P00RE							0
33	I2U WMC	12U WALL MOUNT CABINET SWM12RUP1-26-26							0
34	CCH-BLNK	CLOSET CONNECT HOUSING (CCH) BLANK PANEL							0



NOT FOR CONSTRUCTION

IFR

REV	DESCRIPTION	DATE
A	ISSUE FOR REVIEW	230106

CITY OF VALDEZ
RADIO NETWORK
IMPROVEMENTS
FIBER

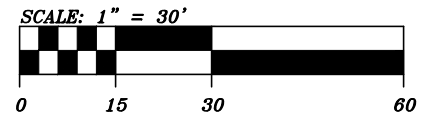
DWN: MPD	DSN: RNS	APP: DRB	REV A
JOB #: 22-0132-90-05			DATE: 230106

PLAN

C3.0

LEGEND

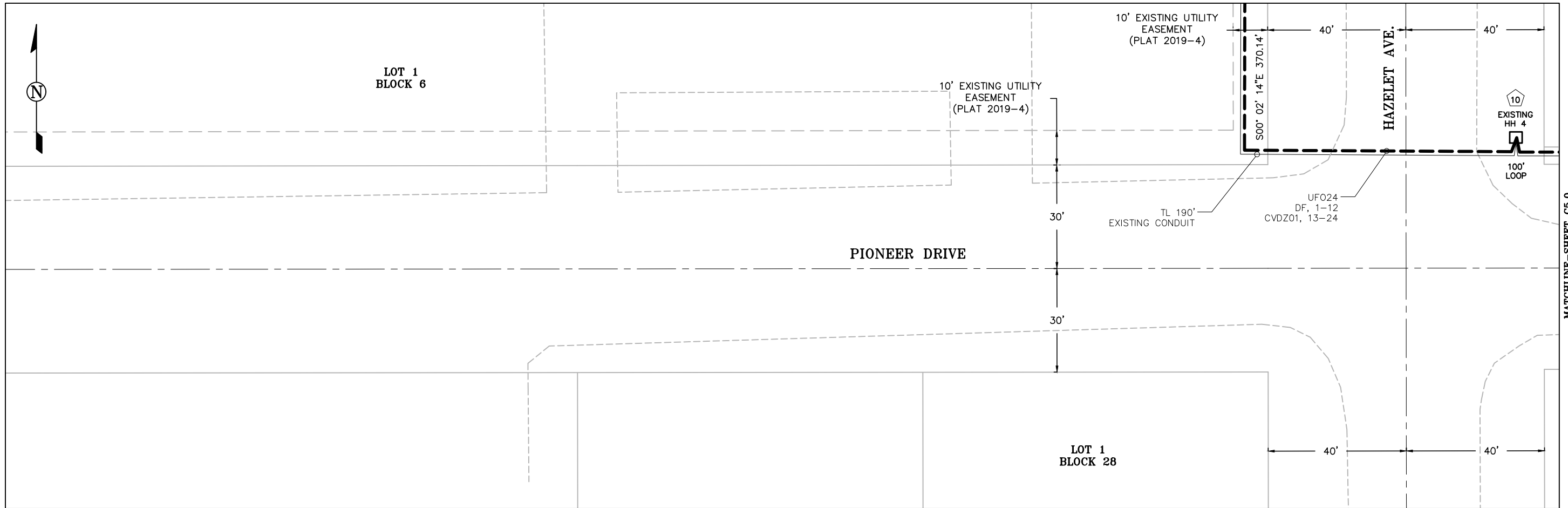
- HAND HOLE
- UFO 24
- EASEMENT
- EDGE OF ROAD / DRIVEWAY
- PROPERTY LINE / ROW
- WORK LOCATION



COPYRIGHT NOTICE

THIS LAYOUT/DESIGN IS AN UNPUBLISHED WORK, AND NEW HORIZONS TELECOM, INC. HEREBY RESERVES ITS COMMON LAW RIGHT, PURSUANT TO TITLE 17 SECTION 2 OF THE USA CODE TO PREVENT ANY UNAUTHORIZED COPYING, PUBLICATION OR USE OF THIS DESIGN AND TO OBTAIN DAMAGES THEREFORE.

MATCHLINE-SHEET C3.0



NOTES:

- FOOTAGES ARE APPROXIMATE.
- SYMBOLS ON DRAWINGS ARE NOT TO SCALE.

ITEM #	UNIT DESIGNATION	DESCRIPTION	WL	EST. QTY	WL	EST. QTY	WL	EST. QTY	Total EST. QTY
1	UFO 24	24 FIBER OPTIC CABLE PLACED IN CONDUIT	10	190					190
2	UFO 24(A)	CABLE STORAGE IN HANDHOLE (SLACK)	10	100					100
3	UFO 96	96 FIBER OPTIC CABLE PLACED IN CONDUIT							0
4	UFO 96(A)	CABLE STORAGE IN HANDHOLE (SLACK)							0
5	BM 92 1.25T	1.25" SDR 13.5 INNER DUCT-TRENCHED							0
6	BM 92 1.25D	1.25" SDR 13.5 INNER DUCT-DUAL							0
7	BM 92 4	4" SCHEDULE 80 PVC CONDUIT							0
8	BM 92 4 (90° X 48")	4" x 90° x 48" SCHEDULE 80 PVC							0
9	BM 60 (4)D	4" (O.D.) HDPE BORE 3.5 (I.D.)							0
10	BM 60 (2)(1.25)D	2 X 1.25" SDR 11 HDPE BORE							0
11	BM 60 (3)(1.25)D	3 X 1.25" SDR 11 HDPE BORE							0
12	UD(1.25)V	TWO (2) VACANT 1.25" DUCTS PLACED IN CONDUIT							0
13	WBM 92	REARRANGE/LOWER EXISTING CONDUIT							0
14	BHF 1	36" X 36" X 48" HAND HOLE							0
15	BM 92 2I	2" GALVANIZED STEEL CONDUIT							0
16	WBHF	REARRANGMENT OF HAND HOLE OR SPLICE VAULT							0
17	ZBHF	SALVAGE AND REUSE HAND HOLE OR SPLICE VAULT							0

ITEM #	UNIT DESIGNATION	DESCRIPTION	WL	EST. QTY	WL	EST. QTY	WL	EST. QTY	Total EST. QTY
18	BM 53	CABLE LOCATE WARNING SIGN							0
19	R1-15	CLEAR AND GRUB ROW 15' WIDE							0
20	ASPHALT REPAIR	REMOVE AND REPLACE ASPHALT (SQ FT)							0
21	BM 70	TRENCH COMPACTION (1' LIFTS)							0
22	LBR PLC	LABOR UNIT FOR 3 CREW MEMBER LINE CREW & EQUIP.							0
23	W HO 1	FIBER OPTIC CABLE FUSION SPLICE REARRANGEMENT							0
24	HO-1	FUSION SPLICE (ONE FIBER)							0
25	HBFO 6.5	FIBER SPLICE CLOSURE 6.5" (AERIAL OR BURIED)							0
26	HBFO TRAY	SPLICE TRAY							0
27	CAT FF	CABLE ACCEPTANCE BI DIRECTIONAL TESTING							0
28	FDH 1RU	48 FIBER DISTRIBUTION HOUSING CCH-O1U							0
29	FDH 2RU	96 FIBER DISTRIBUTION HOUSING CCH-O2U							0
30	FDH 4RU	288 FIBER DISTRIBUTION HOUSING CCH-O4U							0
31	FDH CASSETTE 12	12 STR SPLICE CASSETTS CCH-CS12-A9-P00RE							0
32	FDH CASSETTE 24	24 STR SPLICE CASSETTS-CS24-A9-P00RE							0
33	I2U WMC	12U WALL MOUNT CABINET SWM12RUP1-26-26							0
34	CCH-BLNK	CLOSET CONNECT HOUSING(CCH)BLANK PANEL							0



NOT FOR CONSTRUCTION

IFR

REV	DESCRIPTION	DATE
A	ISSUE FOR REVIEW	230106

**CITY OF VALDEZ
RADIO NETWORK
IMPROVEMENTS
FIBER**

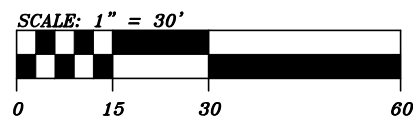
DWN: MPD	DSN: RNS	APP: DRB	REV A
JOB #: 22-0132-90-05			DATE: 230106

PLAN

C4.0

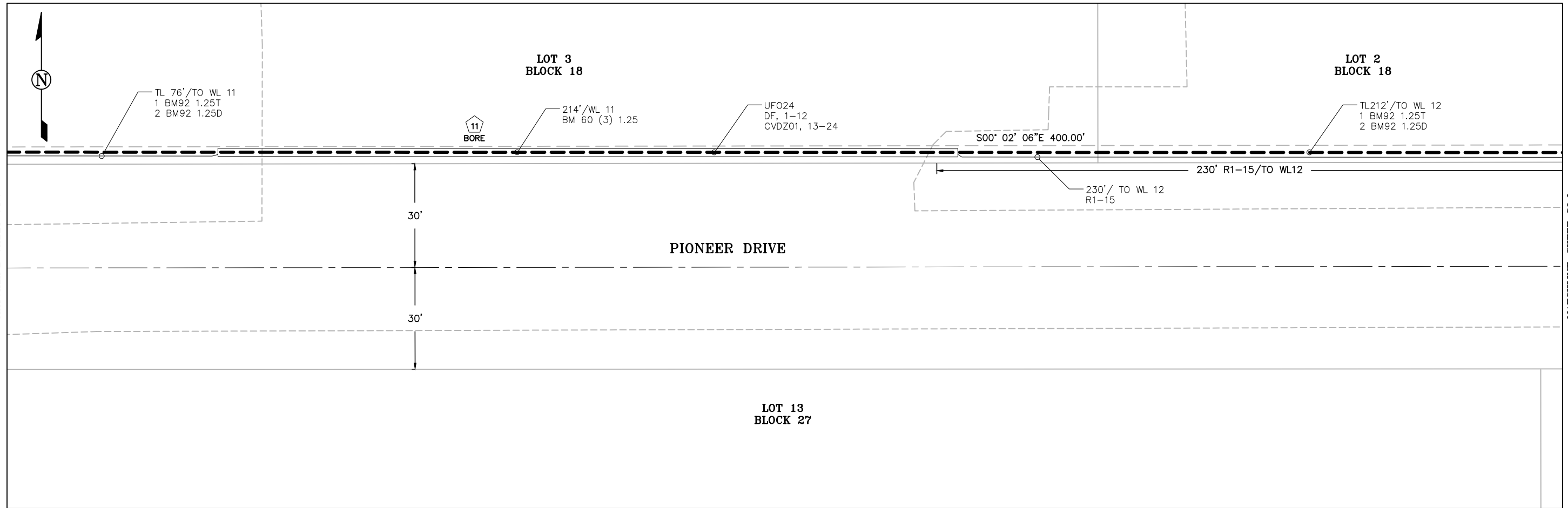
LEGEND

- HAND HOLE
- UFO 24
- EASEMENT
- EDGE OF ROAD / DRIVEWAY
- PROPERTY LINE / ROW
- WORK LOCATION



COPYRIGHT NOTICE

THIS LAYOUT/DESIGN IS AN UNPUBLISHED WORK, AND NEW HORIZONS TELECOM, INC. HEREBY RESERVES ITS COMMON LAW RIGHT, PURSUANT TO TITLE 17 SECTION 2 OF THE USA CODE TO PREVENT ANY UNAUTHORIZED COPYING, PUBLICATION OR USE OF THIS DESIGN AND TO OBTAIN DAMAGES THEREFORE.



NOTES:
 1. FOOTAGES ARE APPROXIMATE.
 2. SYMBOLS ON DRAWINGS ARE NOT TO SCALE.

ITEM #	UNIT DESIGNATION	DESCRIPTION	WL	EST. QTY	WL	EST. QTY	WL	EST. QTY	Total EST. QTY
1	UFO 24	24 FIBER OPTIC CABLE PLACED IN CONDUIT							0
2	UFO 24 (A)	CABLE STORAGE IN HANDHOLE (SLACK)							0
3	UFO 96	96 FIBER OPTIC CABLE PLACED IN CONDUIT							0
4	UFO 96 (A)	CABLE STORAGE IN HANDHOLE (SLACK)							0
5	BM 92 1.25T	1.25" SDR 13.5 INNER DUCT-TRENCHED	11	76					76
6	BM 92 1.25D	1.25" SDR 13.5 INNER DUCT-DUAL	11	152					152
7	BM 92 4	4" SCHEDULE 80 PVC CONDUIT							0
8	BM 92 4 (90° X 48")	4" x 90° x 48" SCHEDULE 80 PVC							0
9	BM 60 (4)(D)	4" (O.D.) HDPE BORE 3.5 (I.D.)							0
10	BM 60 (2)(1.25)(D)	2 X 1.25" SDR 11 HDPE BORE							0
11	BM 60 (3)(1.25)(D)	3 X 1.25" SDR 11 HDPE BORE	11	214					214
12	UD(1.25)V	TWO (2) VACANT 1.25" DUCTS PLACED IN CONDUIT							0
13	WBM 92	REARRANGE/LOWER EXISTING CONDUIT							0
14	BHF 1	36" X 36" X 48" HAND HOLE							0
15	BM 92 2I	2" GALVANIZED STEEL CONDUIT							0
16	WBHF	REARRANGMENT OF HAND HOLE OR SPLICE VAULT							0
17	ZBHF	SALVAGE AND REUSE HAND HOLE OR SPLICE VAULT							0

ITEM #	UNIT DESIGNATION	DESCRIPTION	WL	EST. QTY	WL	EST. QTY	WL	EST. QTY	Total EST. QTY
18	BM 53	CABLE LOCATE WARNING SIGN							0
19	R1-15	CLEAR AND GRUB ROW 15' WIDE							0
20	ASPHALT REPAIR	REMOVE AND REPLACE ASPHALT (SQ FT)							0
21	BM 70	TRENCH COMPACTION (1' LIFTS)							0
22	LBR PLC	LABOR UNIT FOR 3 CREW MEMBER LINE CREW & EQUIP.							0
23	W HO 1	FIBER OPTIC CABLE FUSION SPLICE REARRANGEMENT							0
24	HO-1	FUSION SPLICE (ONE FIBER)							0
25	HBFO 6.5	FIBER SPLICE CLOSURE 6.5" (AERIAL OR BURIED)							0
26	HBFO TRAY	SPLICE TRAY							0
27	CAT FF	CABLE ACCEPTIANCE BI DIRECTIONAL TESTING							0
28	FDH 1RU	48 FIBER DISTRIBUTION HOUSING CCH-O1U							0
29	FDH 2RU	96 FIBER DISTRIBUTION HOUSING CCH-O2U							0
30	FDH 4RU	288 FIBER DISTRIBUTION HOUSING CCH-O4U							0
31	FDH CASSETTE 12	12 STR SPLICE CASSETTS CCH-CS12-A9-P00RE							0
32	FDH CASSETTE 24	24 STR SPLICE CASSETTS-CS24-A9-P00RE							0
33	12U WMC	12U WALL MOUNT CABINET SWM12RUPL-26-26							0
34	CCH-BLNK	CLOSET CONNECT HOUSING (CCH) BLANK PANEL							0

NEW HORIZONS
 CITY OF VALDEZ, ALASKA
 OPPORTUNITIES IN EVERY SEASON
 NOT FOR CONSTRUCTION

IFR

REV	DESCRIPTION	DATE
A	ISSUE FOR REVIEW	230106

**CITY OF VALDEZ
 RADIO NETWORK
 IMPROVEMENTS
 FIBER**

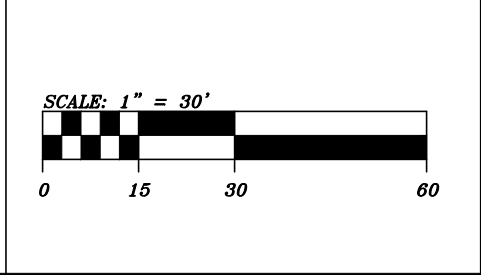
DWN: MPD	DSN: RNS	APP: DRB	REV
JOB #: 22-0132-90-05			DATE: 230106
A			

PLAN

C5.0

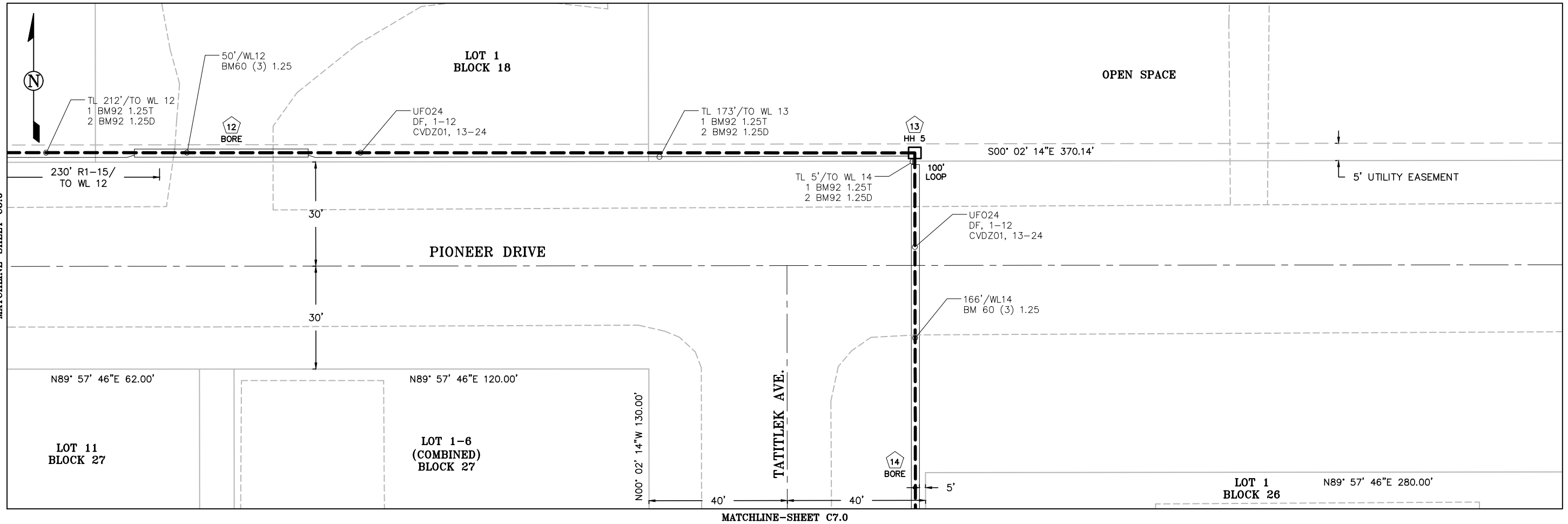
LEGEND

- HAND HOLE
- UFO 24
- EASEMENT
- EDGE OF ROAD / DRIVEWAY
- PROPERTY LINE / ROW
- WORK LOCATION



COPYRIGHT NOTICE

THIS LAYOUT/DESIGN IS AN UNPUBLISHED WORK, AND NEW HORIZONS TELECOM, INC. HEREBY RESERVES ITS COMMON LAW RIGHT, PURSUANT TO TITLE 17 SECTION 2 OF THE USA CODE TO PREVENT ANY UNAUTHORIZED COPYING, PUBLICATION OR USE OF THIS DESIGN AND TO OBTAIN DAMAGES THEREFORE.



MATCHLINE-SHEET C5.0

MATCHLINE-SHEET C7.0

NOTES:

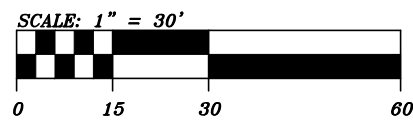
- FOOTAGES ARE APPROXIMATE.
- SYMBOLS ON DRAWINGS ARE NOT TO SCALE.

ITEM #	UNIT DESIGNATION	DESCRIPTION	WL	EST. QTY	WL	EST. QTY	WL	EST. QTY	Total EST. QTY
1	UFO 24	24 FIBER OPTIC CABLE PLACED IN CONDUIT	13	725					725
2	UFO 24 (A)	CABLE STORAGE IN HANDHOLE (SLACK)	13	100					100
3	UFO 96	96 FIBER OPTIC CABLE PLACED IN CONDUIT							0
4	UFO 96 (A)	CABLE STORAGE IN HANDHOLE (SLACK)							0
5	BM 92 1.25T	1.25" SDR 13.5 INNER DUCT-TRENCHED	12	212	13	173	14	5	390
6	BM 92 1.25D	1.25" SDR 13.5 INNER DUCT-DUAL	12	324	13	346	14	10	680
7	BM 92 4	4" SCHEDULE 80 PVC CONDUIT							0
8	BM 92 4 (90° X 48")	4" x 90° x 48" SCHEDULE 80 PVC							0
9	BM 60 (4)D	4" (O.D.) HDPE BORE 3.5 (L.D.)							0
10	BM 60 (2)(1.25)D	2 X 1.25" SDR 11 HDPE BORE							0
11	BM 60 (3)(1.25)D	3 X 1.25" SDR 11 HDPE BORE	12	50					50
12	UD(1.25)V	TWO (2) VACANT 1.25" DUCTS PLACED IN CONDUIT							0
13	WBM 92	REARRANGE/LOWER EXISTING CONDUIT							0
14	BHF 1	36" X 36" X 48" HAND HOLE	13	1					1
15	BM 92 2I	2" GALVANIZED STEEL CONDUIT							0
16	WBHF	REARRANGMENT OF HAND HOLE OR SPLICE VAULT							0
17	ZBHF	SALVAGE AND REUSE HAND HOLE OR SPLICE VAULT							0

ITEM #	UNIT DESIGNATION	DESCRIPTION	WL	EST. QTY	WL	EST. QTY	WL	EST. QTY	Total EST. QTY
18	BM 53	CABLE LOCATE WARNING SIGN							0
19	R1-15	CLEAR AND GRUB ROW 15' WIDE	12	230					230
20	ASPHALT REPAIR	REMOVE AND REPLACE ASPHALT (SQ FT)							0
21	BM 70	TRENCH COMPACTION (1' LIFTS)							0
22	LBR PLC	LABOR UNIT FOR 3 CREW MEMBER LINE CREW & EQUIP.							0
23	W HO 1	FIBER OPTIC CABLE FUSION SPLICE REARRANGEMENT							0
24	HO-1	FUSION SPLICE (ONE FIBER)							0
25	HBFO 6.5	FIBER SPLICE CLOSURE 6.5" (AERIAL OR BURIED)							0
26	HBFO TRAY	SPLICE TRAY							0
27	CAT FF	CABLE ACCEPTANCE BI DIRECTIONAL TESTING							0
28	FDH 1RU	48 FIBER DISTRIBUTION HOUSING CCH-O1U							0
29	FDH 2RU	96 FIBER DISTRIBUTION HOUSING CCH-O2U							0
30	FDH 4RU	288 FIBER DISTRIBUTION HOUSING CCH-O4U							0
31	FDH CASSETTE 12	12 STR SPLICE CASSETTS CCH-CS12-A9-P00RE							0
32	FDH CASSETTE 24	24 STR SPLICE CASSETTS-CS24-A9-P00RE							0
33	I2U WMC	12U WALL MOUNT CABINET SWM12RUP1-26-26							0
34	CCH-BLNK	CLOSET CONNECT HOUSING (CCH) BLANK PANEL							0

LEGEND

- HAND HOLE
- UFO 24
- EASEMENT
- EDGE OF ROAD / DRIVEWAY
- PROPERTY LINE / ROW
- WORK LOCATION



COPYRIGHT NOTICE

THIS LAYOUT/DESIGN IS AN UNPUBLISHED WORK, AND NEW HORIZONS TELECOM, INC. HEREBY RESERVES ITS COMMON LAW RIGHT, PURSUANT TO TITLE 17 SECTION 2 OF THE USA CODE TO PREVENT ANY UNAUTHORIZED COPYING, PUBLICATION OR USE OF THIS DESIGN AND TO OBTAIN DAMAGES THEREFORE.



NOT FOR CONSTRUCTION

IFR

REV	DESCRIPTION	DATE
A	ISSUE FOR REVIEW	230106

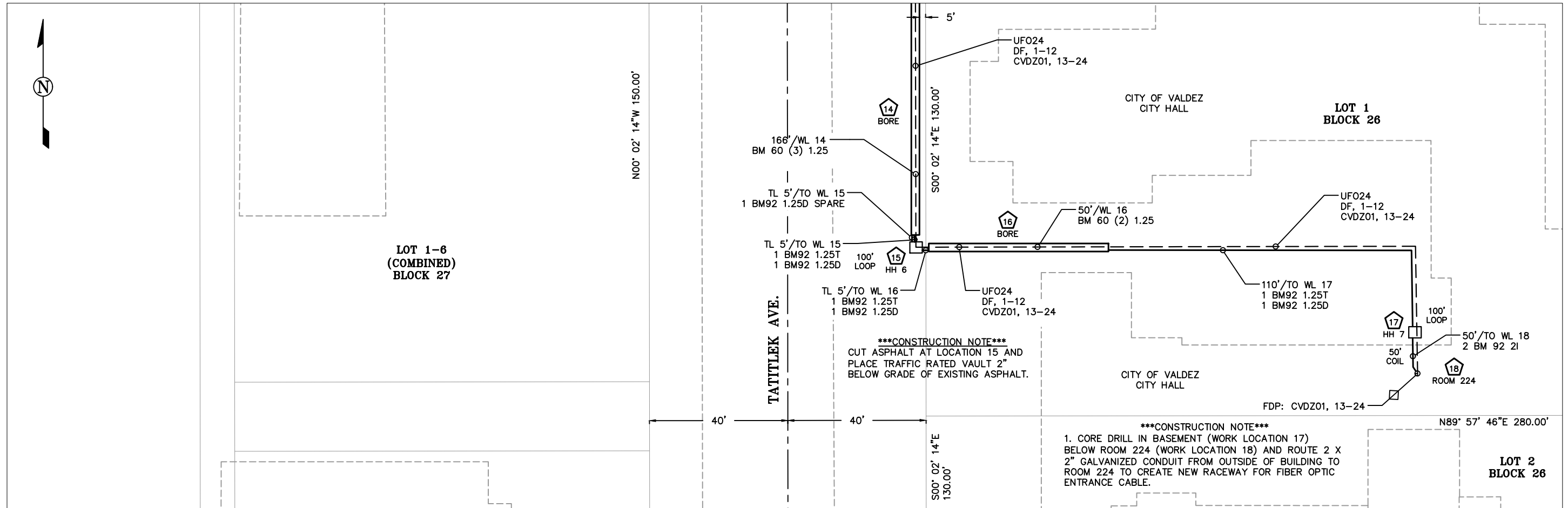
**CITY OF VALDEZ
RADIO NETWORK
IMPROVEMENTS
FIBER**

DWN: MPD	DSN: RNS	APP: DRB	REV A
JOB #: 22-0132-90-05			DATE: 230106

PLAN

C6.0

MATCHLINE-SHEET C6.0



NOTES:

- FOOTAGES ARE APPROXIMATE.
- SYMBOLS ON DRAWINGS ARE NOT TO SCALE.

ITEM #	UNIT DESIGNATION	DESCRIPTION	WL	EST. QTY	WL	EST. QTY	WL	EST. QTY	Total EST. QTY
1	UFO 24	24 FIBER OPTIC CABLE PLACED IN CONDUIT	15	176	17	165	18	100	441
2	UFO 24 (A)	CABLE STORAGE IN HANDHOLE (SLACK)	15	100	17	100			200
3	UFO 96	96 FIBER OPTIC CABLE PLACED IN CONDUIT							0
4	UFO 96 (A)	CABLE STORAGE IN HANDHOLE (SLACK)							0
5	BM 92 1.25T	1.25" SDR 13.5 INNER DUCT-TRENCHED	15	5	16	5	17	110	120
6	BM 92 1.25D	1.25" SDR 13.5 INNER DUCT-DUAL	15	10	16	5	17	110	125
7	BM 92 4	4" SCHEDULE 80 PVC CONDUIT							0
8	BM 92 4 (90° X 48")	4" x 90° x 48" SCHEDULE 80 PVC							0
9	BM 60 (4)(D)	4" (O.D.) HDPE BORE 3.5 (I.D.)							0
10	BM 60 (2)(1.25)(D)	2 X 1.25" SDR 11 HDPE BORE			16	50			50
11	BM 60 (3)(1.25)(D)	3 X 1.25" SDR 11 HDPE BORE	14	166					166
12	UD(1.25)V	TWO (2) VACANT 1.25" DUCTS PLACED IN CONDUIT							0
13	WBM 92	REARRANGE/LOWER EXISTING CONDUIT							0
14	BHF 1	36" X 36" X 48" HAND HOLE	15	1	17	1			2
15	BM 92 2I	2" GALVANIZED STEEL CONDUIT	18	50					50
16	WBHF	REARRANGMENT OF HAND HOLE OR SPLICE VAULT							0
17	ZBHF	SALVAGE AND REUSE HAND HOLE OR SPLICE VAULT							0

ITEM #	UNIT DESIGNATION	DESCRIPTION	WL	EST. QTY	WL	EST. QTY	WL	EST. QTY	Total EST. QTY
18	BM 53	CABLE LOCATE WARNING SIGN							0
19	R1-15	CLEAR AND GRUB ROW 15' WIDE							0
20	ASPHALT REPAIR	REMOVE AND REPLACE ASPHALT (SQ FT)	15	10					10
21	BM 70	TRENCH COMPACTION (1' LIFTS)	15	12					12
22	LBR PLC	LABOR UNIT FOR 3 CREW MEMBER LINE CREW & EQUIP.	17	10	18	10			20
23	W HO 1	FIBER OPTIC CABLE FUSION SPLICE REARRANGEMENT							0
24	HO-1	FUSION SPLICE (ONE FIBER)	18	12					12
25	HBFO 6.5	FIBER SPLICE CLOSURE 6.5" (AERIAL OR BURIED)							0
26	HBFO TRAY	SPLICE TRAY							0
27	CAT FF	CABLE ACCEPTANCE BI DIRECTIONAL TESTING							0
28	FDH 1RU	48 FIBER DISTRIBUTION HOUSING CCH-O1U	18	1					1
29	FDH 2RU	96 FIBER DISTRIBUTION HOUSING CCH-O2U							0
30	FDH 4RU	288 FIBER DISTRIBUTION HOUSING CCH-O4U							0
31	FDH CASSETTE 12	12 STR SPLICE CASSETTS CCH-CS12-A9-P00RE	18	1					1
32	FDH CASSETTE 24	24 STR SPLICE CASSETTS-CS24-A9-P00RE							0
33	12U WMC	12U WALL MOUNT CABINET SWM12RUP1-26-26							0
34	CCH-BLNK	CLOSET CONNECT HOUSING (CCH) BLANK PANEL	18	7					7



NOT FOR CONSTRUCTION

IFR

REV	DESCRIPTION	DATE
A	ISSUE FOR REVIEW	230106

**CITY OF VALDEZ
RADIO NETWORK
IMPROVEMENTS
FIBER**

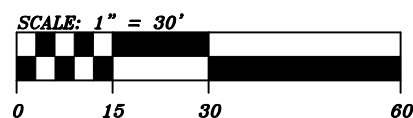
DWN: MPD	DSN: RNS	APP: DRB	REV A
JOB #: 22-0132-90-05			DATE: 230106

PLAN

C7.0

LEGEND

	HAND HOLE
	UFO 24
	EASEMENT
	EDGE OF ROAD / DRIVEWAY
	PROPERTY LINE / ROW
	WORK LOCATION



COPYRIGHT NOTICE

THIS LAYOUT/DESIGN IS AN UNPUBLISHED WORK, AND NEW HORIZONS TELECOM, INC. HEREBY RESERVES ITS COMMON LAW RIGHT, PURSUANT TO TITLE 17 SECTION 2 OF THE USA CODE TO PREVENT ANY UNAUTHORIZED COPYING, PUBLICATION OR USE OF THIS DESIGN AND TO OBTAIN DAMAGES THEREFORE.