

An aerial photograph of a coastal town, likely in Alaska, featuring a large marina filled with boats, a residential and commercial area, and a backdrop of massive, snow-covered mountains under a clear blue sky. The text "We Are All In the Museum Business Together!" is overlaid in the center in a bold, white, sans-serif font.

**We Are All In the Museum Business  
Together!**

# Current Sites



Starting the Conversation...



Closing Remembering Old Valdez

# What do we do at the Annex?

Old Town  
Model



Research



Education  
Programs



Collection  
Management



# What do we do at the Annex?

Protect the  
Collections



Administration



Exhibit  
Design and  
Preparation



Theater



# What do we do at the Annex?

Retail Store



Storage



# Impact of Closing the Annex

Interpretation



Research



Education



Collection Management



# Impact of Closing the Annex

Collection Storage



Office Space



Exhibit Prep



Theater





# Impact of Closing the Annex

Retail Store



Storage



# Preparing For Change

- What will the Museum look like in one year?  
Five years?
  - Short Term – Temporary Storage
  - Long Term – New Museum



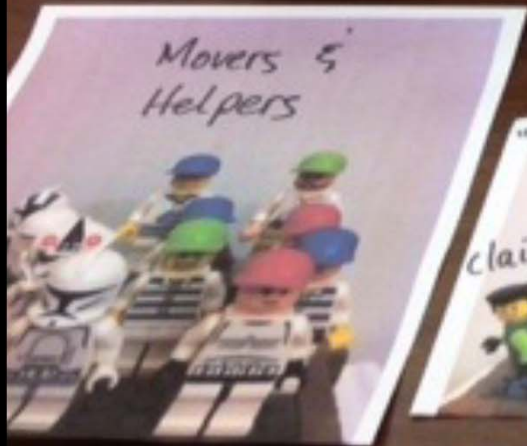
# Short Term Preparations

- Identify resources
  - Financial:
    - Collections Move
  - Human Resources
  - Spatial Needs
- Set up a timeline
- Draft a plan
- Implement



	2018	2019	2020	2021	2022	5 year Total
<b>Moving Costs</b>						
Professional Services	\$50,000					
Labor	\$50,000					
Site Preparation	\$750,000					
Moving	\$125,000					
<b>Rent for Space</b>	\$27,000	\$36,000	\$36,000	\$36,000	\$36,000	
<b>Utilities: Electric, Heat, Water Sewer</b>	\$40,150	\$40,150	\$40,150	\$40,150	\$40,150	
<b>Telephone/Internet</b>	\$4,500	\$4,500	\$4,500	\$4,500	\$4,500	
<b>IT Support</b>	\$9,000	\$9,000	\$9,000	\$9,000	\$9,000	
<b>Total</b>	<b>\$1,055,650.</b>	<b>\$89,650</b>	<b>\$89,650</b>	<b>\$89,650</b>	<b>\$89,650</b>	<b>\$1,414,250</b>

# Human Resources



# Preparation Time

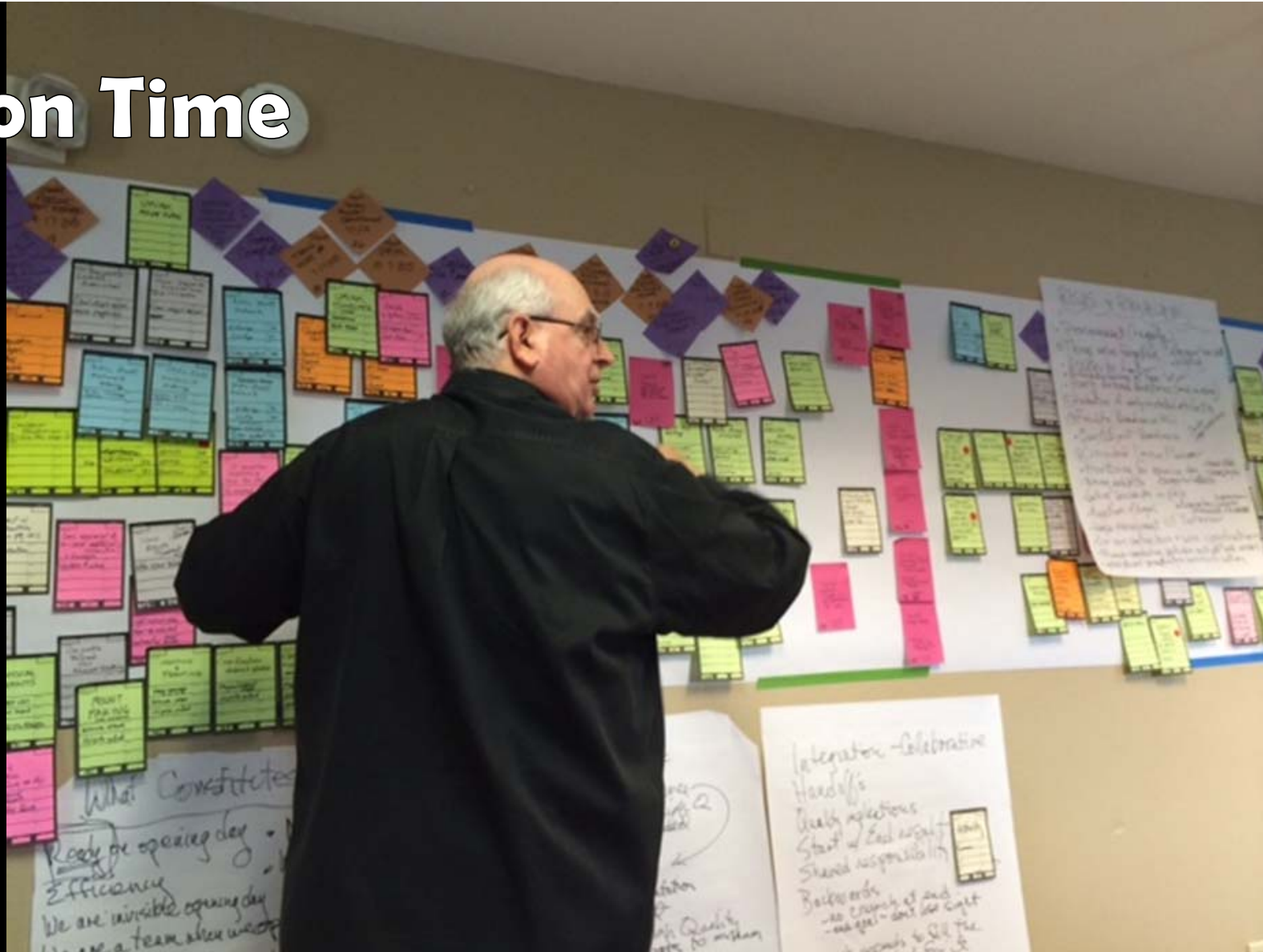
*"Work backwards from a clearly defined completion date, assemble a team of experts, develop a plan, assign roles, and commit to the task at hand."*

Time frame:

1 year to plan

6 months to prep

6 weeks to move



# Planning Options for Temporary Storage

## Existing

Former Prospector Building



Airport



Other Sites

# Planning Options for Temporary Storage New





# Long Term Preparations

A monarch butterfly with vibrant orange wings and black veins is perched on a green leaf. The butterfly's wings are spread, showing the characteristic pattern of orange, black, and white spots. The background is a soft, out-of-focus green, suggesting a natural habitat.

- Get a commitment from COV to proceed with a Museum Project
- Secure a site
- Acquire funding to begin concept design & Fundraising Support Materials.
- Design and proceed