

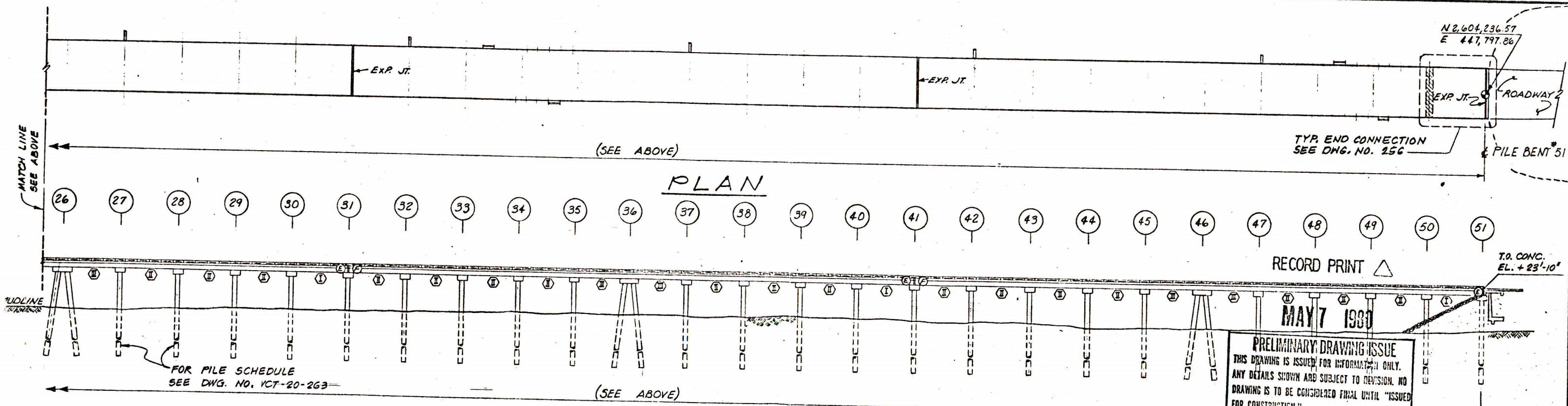
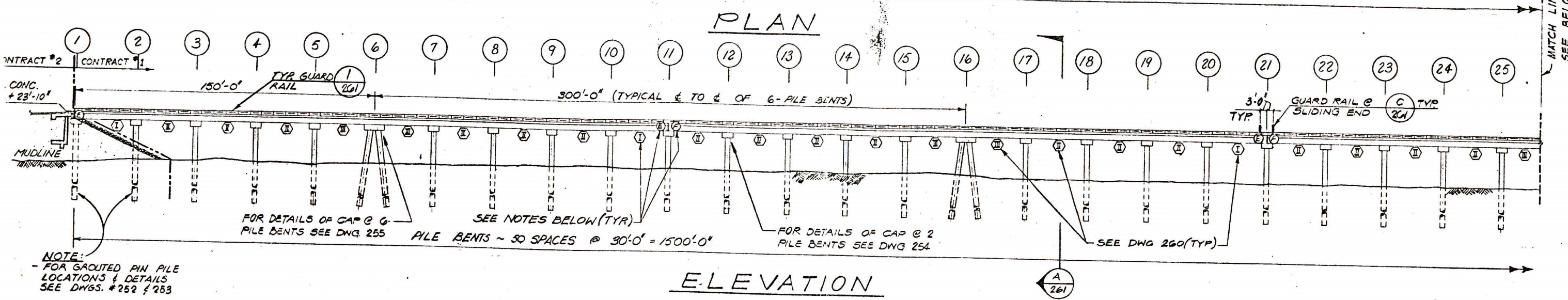
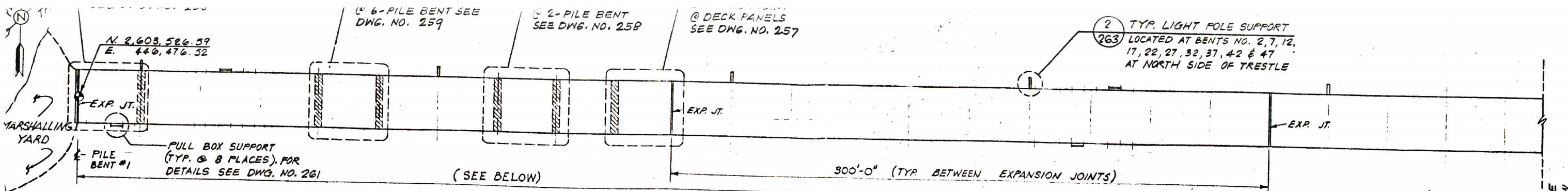


City of Valdez

Project: VCT Causeway Repairs
Project Number: 20-350-2011 / Contract Number: 1683

APPENDIX A

REFERENCE DRAWINGS VCT CAUSEWAY



REFERENCES

MK	DATE	BY	APPROVED	REVISIONS

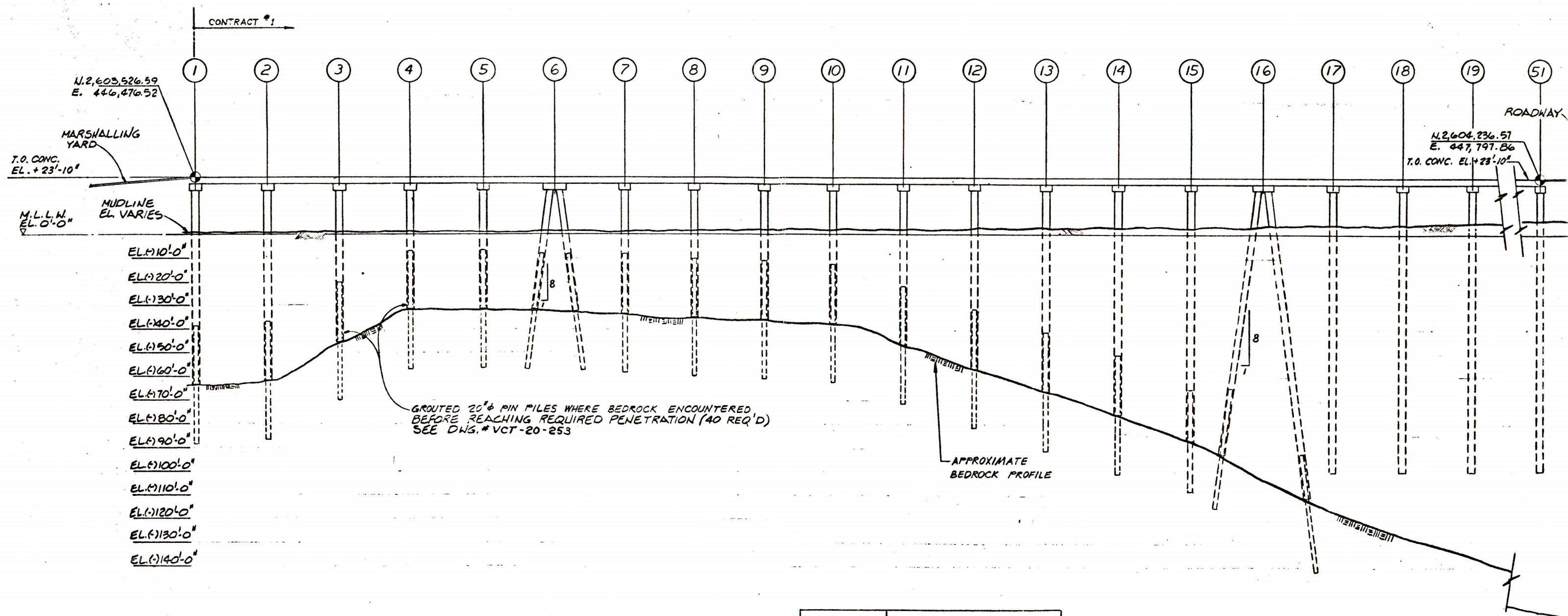
OVERALL PLOT PLAN - VCT-00-003
TRESTLE PILE LOCATION PLAN - VCT-00-008
TRESTLE BEDROCK PROFILE & PIN PILE

NOTES:

1-EXPANSION END NOTED (E)
2-FIXED END NOTED (F)
3-O DENOTES TYPE OF PRECAST CONC. DOUBLE TEES (SEE DWG. 260)
4-FOR GEN. NOTES SEE DWG. VCT-G-001

SANTA FE TECHNICAL SERVICES COMPANY
A Subsidiary of Santa Fe International Corporation
Houston, Texas

TRESTLE - PLAN & ELEVATION
Scale 1" = 25'
Drawing # VCT-20-251



BENT	PILE TIP ELEVATION
1 → 16	BEDROCK + INSERTED PIN PILE, SEE DWG. VCT-20-253
17 → 25	- 100' MLLW
26	- 160' "
27 → 35	- 100' "
36	- 160' "
37 → 45	- 100' "
46	- 160' "
47 → 51	- 100' "

NOTE

1. FOR GEN. NOTES SEE DWG. VCT-G-001
2. FOR PILE SCHEDULE SEE DWG. VCT-20-263

RECORD PRINT

MAY 7 1980

PRELIMINARY DRAWING ISSUE
THIS DRAWING IS ISSUED FOR INFORMATION ONLY.
ANY DETAILS SHOWN ARE SUBJECT TO REVISION. NO
DRAWING IS TO BE CONSIDERED FINAL UNTIL "ISSUED
FOR CONSTRUCTION."

REFERENCES

MK DATE BY APPROVED

REVISIONS

MK DATE BY APPROVED

REVISIONS



SANTA FE TECHNICAL SERVICES COMPANY

A Subsidiary of Santa Fe International Corporation
Houston, Texas

DRAWN BY
RICH G.

DATE
2-7-80

CHECKED BY

DATE

ENGINEER

DATE

SF APPROVAL

CLIENT APPROVAL

SCALE
1"=20'-0"

TRESTLE - BEDROCK PROFILE AND PIN PILE LOCATION

VALDEZ CONTAINER TERMINAL

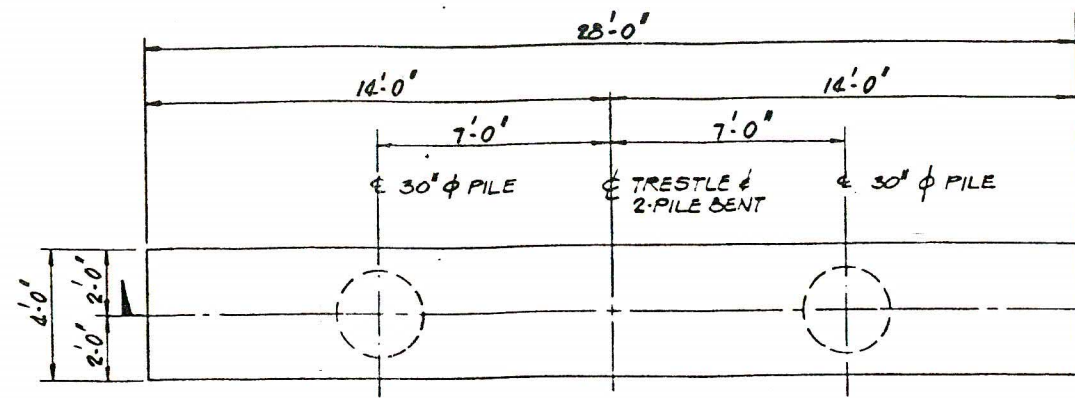
VALDEZ, ALASKA

CONTRACT NO.

3071.00

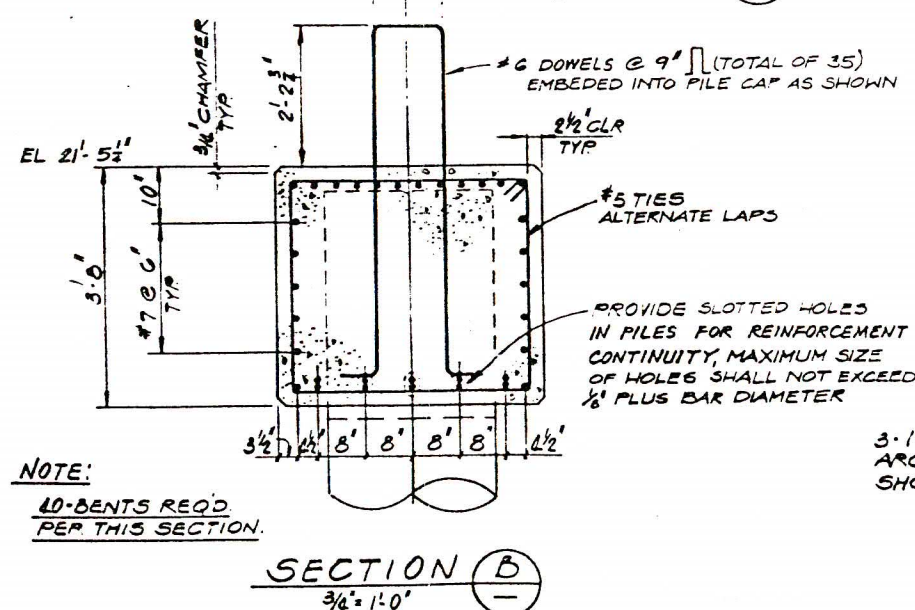
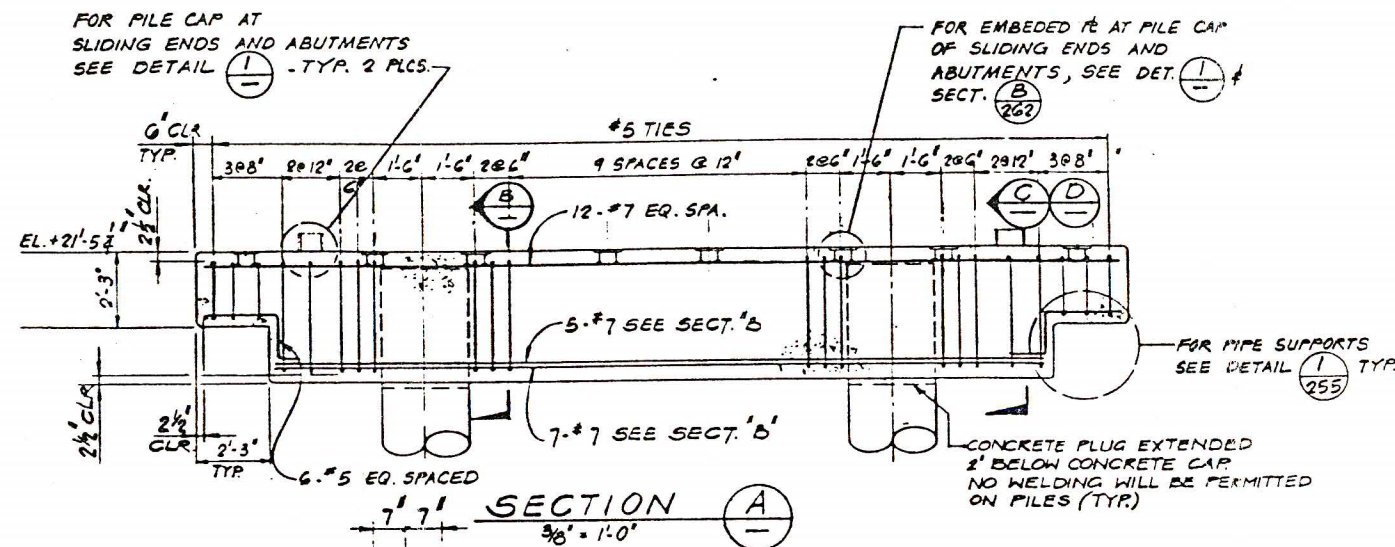
DRAWING NO.

VCT-20-252



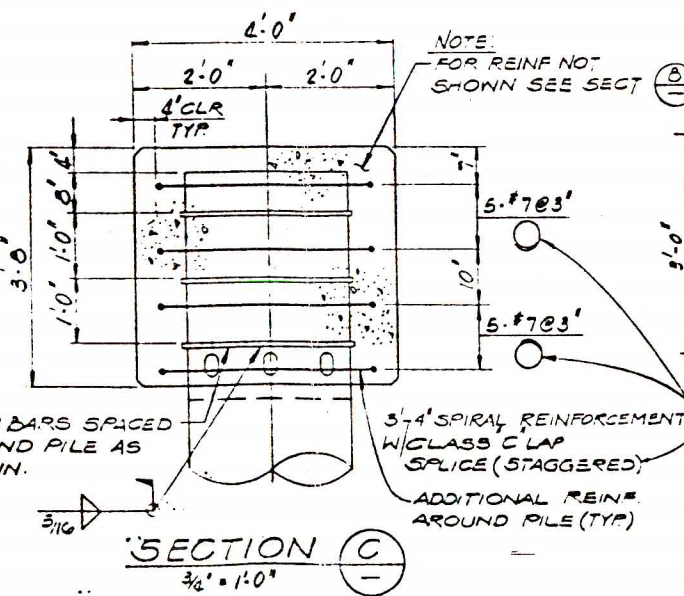
4G BENTS REQ'D
SEE NOTE ON SECT. 'B' & 'D'

PLAN (FOR LOCATION SEE DWG. 251)
3/8" = 1'-0"

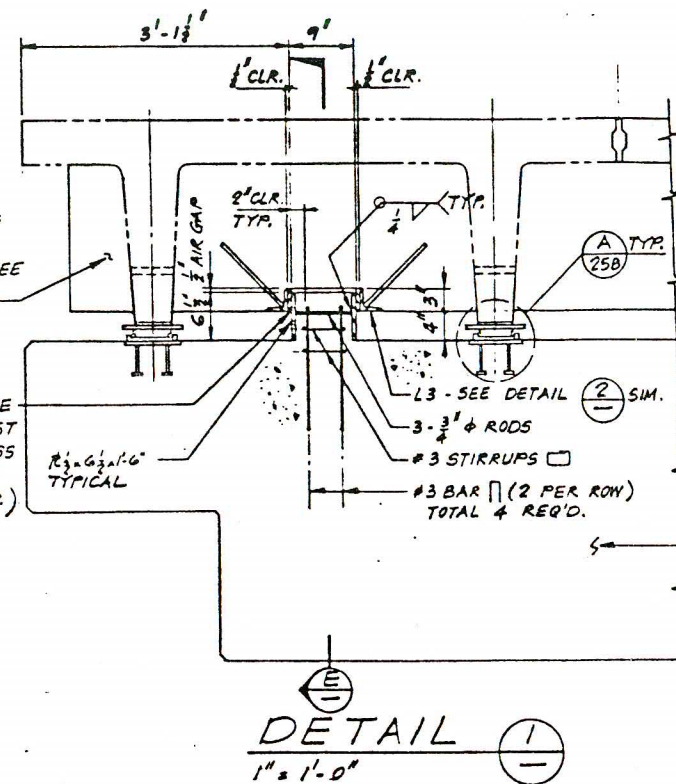


NOTE:
4G BENTS REQ'D
PER THIS SECTION.

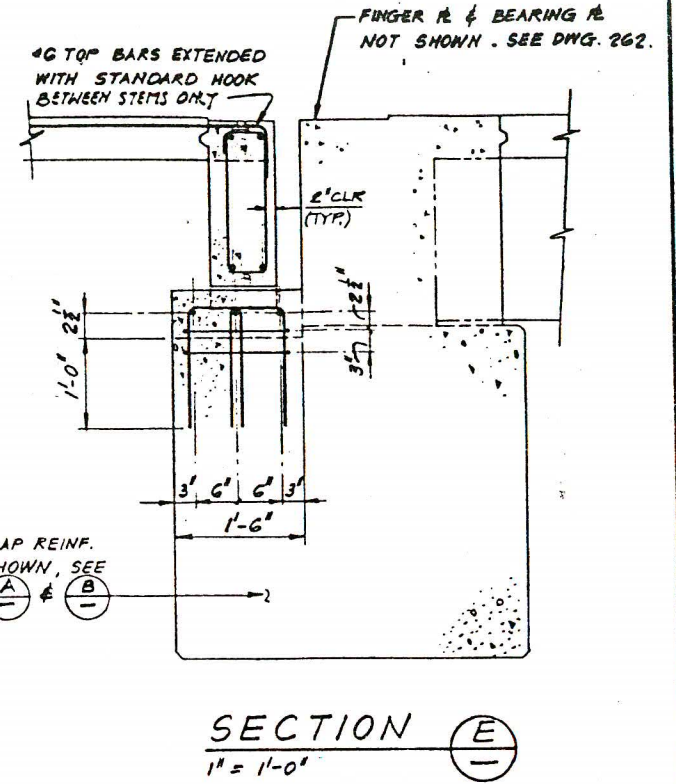
SECTION B
3/8" = 1'-0"



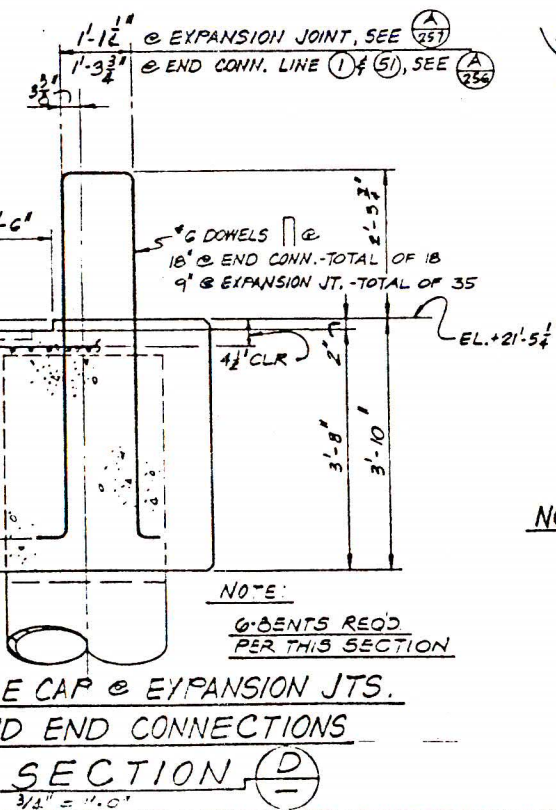
SECTION C
3/8" = 1'-0"



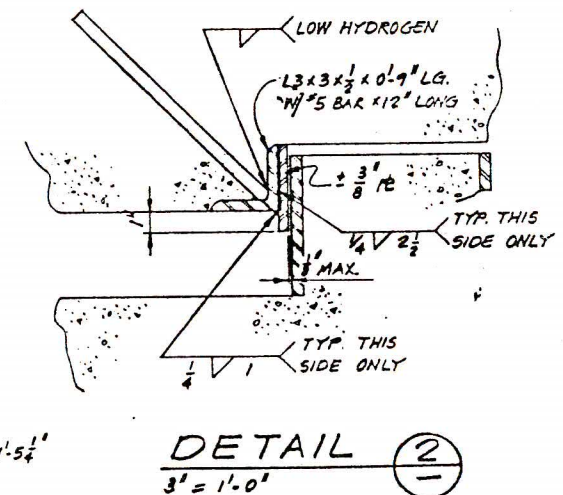
DETAIL 1
1" = 1'-0"



SECTION E
1" = 1'-0"



PILE CAP @ EXPANSION JTS.
AND END CONNECTIONS
SECTION D
3/8" = 1'-0"



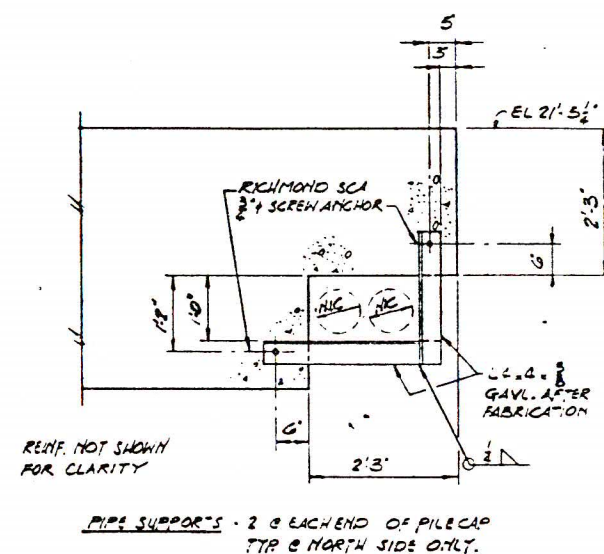
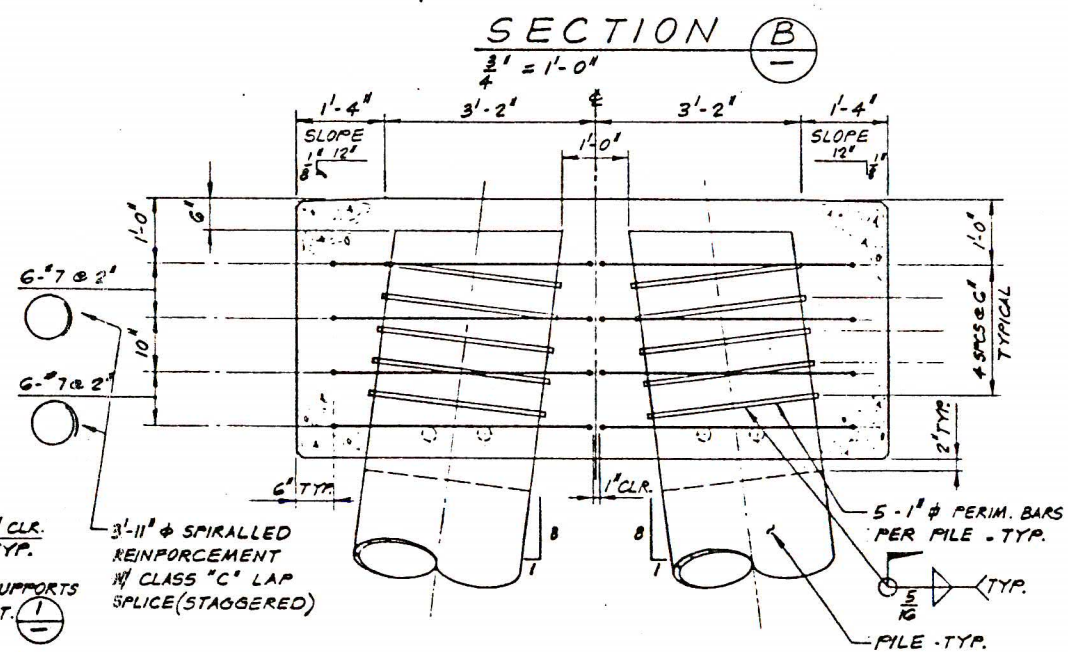
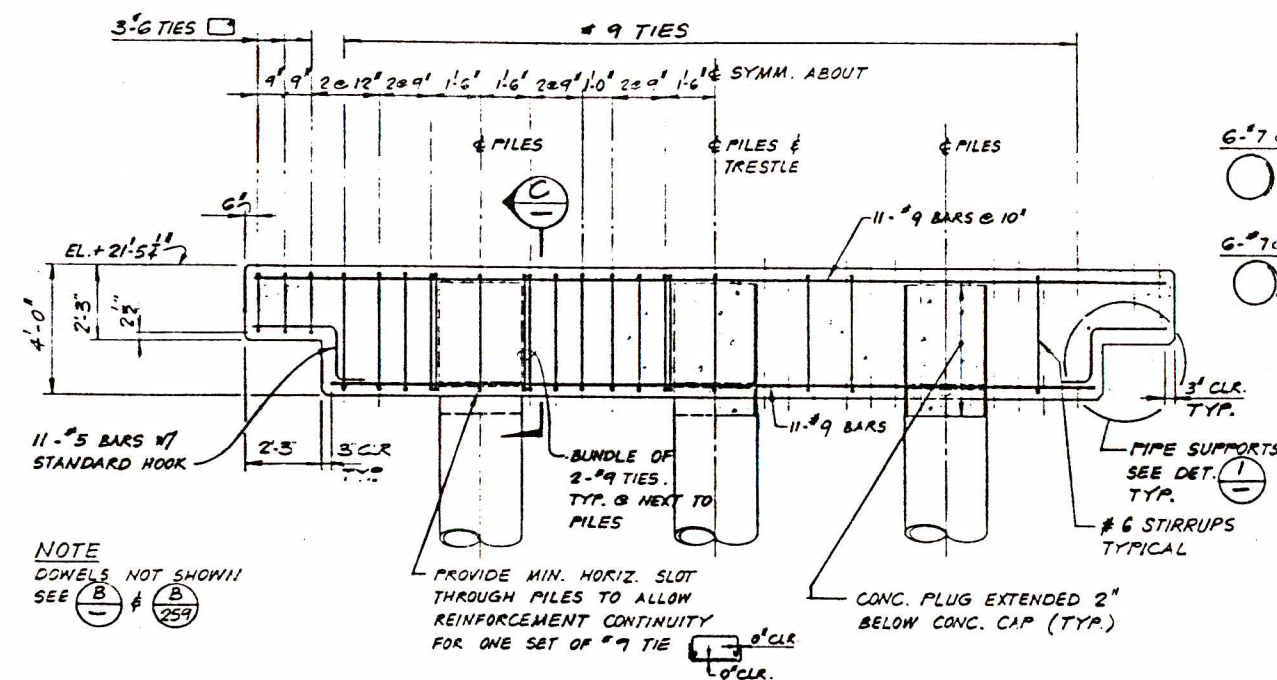
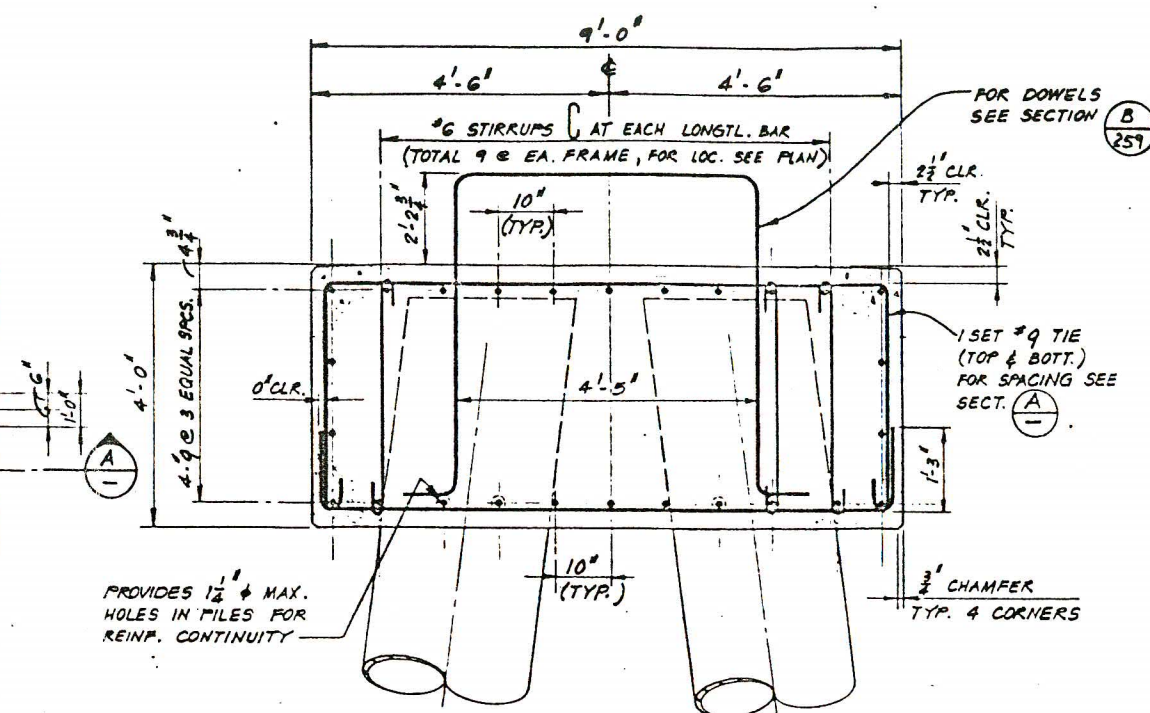
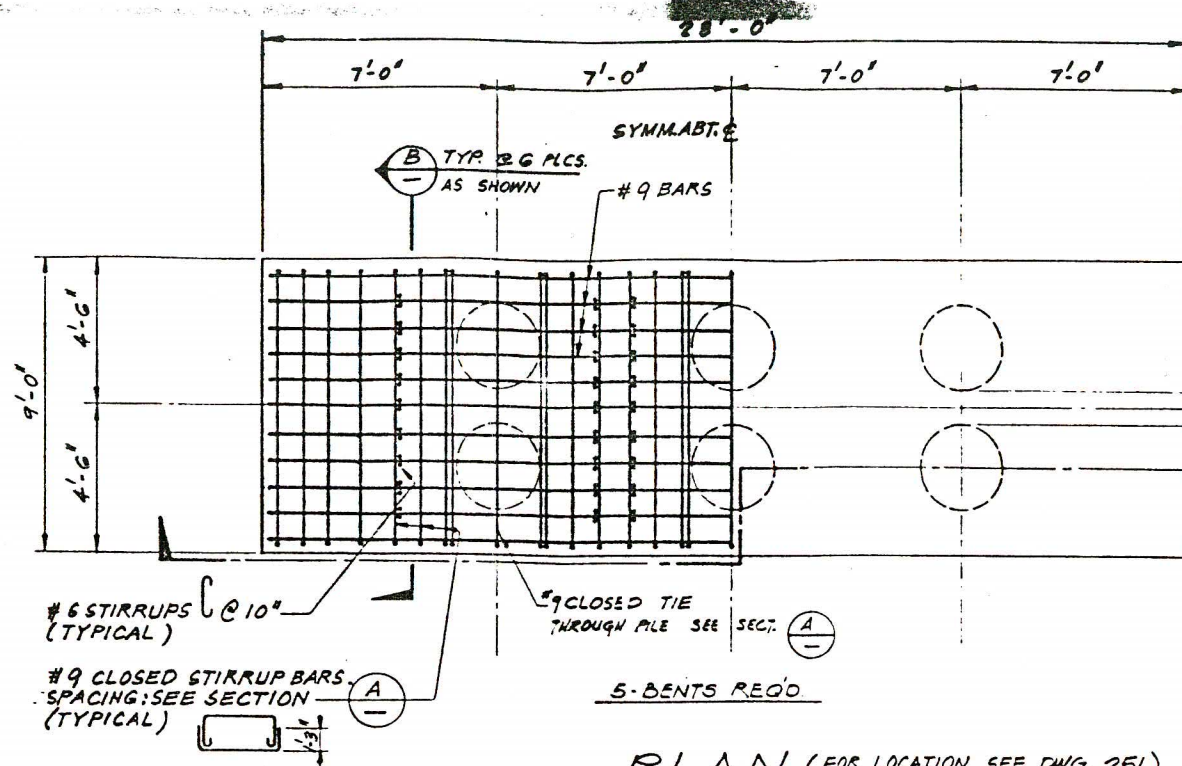
DETAIL 2
3" = 1'-0"

NOTE:
1. FOR GENERAL NOTES SEE DWG. VCT-G-001

MAY 7 1980

PRELIMINARY DRAWING ISSUE
THIS DRAWING IS ISSUED FOR INFORMATION ONLY.
ANY DETAILS SHOWN ARE SUBJECT TO REVISION. NO
DRAWING IS TO BE CONSIDERED FINAL UNTIL "ISSUED
FOR CONSTRUCTION."

REFERENCES	DATE BY APPROVED	REVISIONS	DATE BY APPROVED	REVISIONS	SANTA FE TECHNICAL SERVICES COMPANY	TRESTLE - TYPICAL 2 PILE BENTS PLAN, SECTIONS & DETAILS
					DRAWN BY J. PALMERI	VALDEZ CONTAINER TERMINAL
					DATE	VALDEZ ALASKA
					DATE	307100
					DATE	DRAWING NO. VCT-20-254



NOTE
DOWELS NOT SHOWN!
SEE (B) & (B) 259

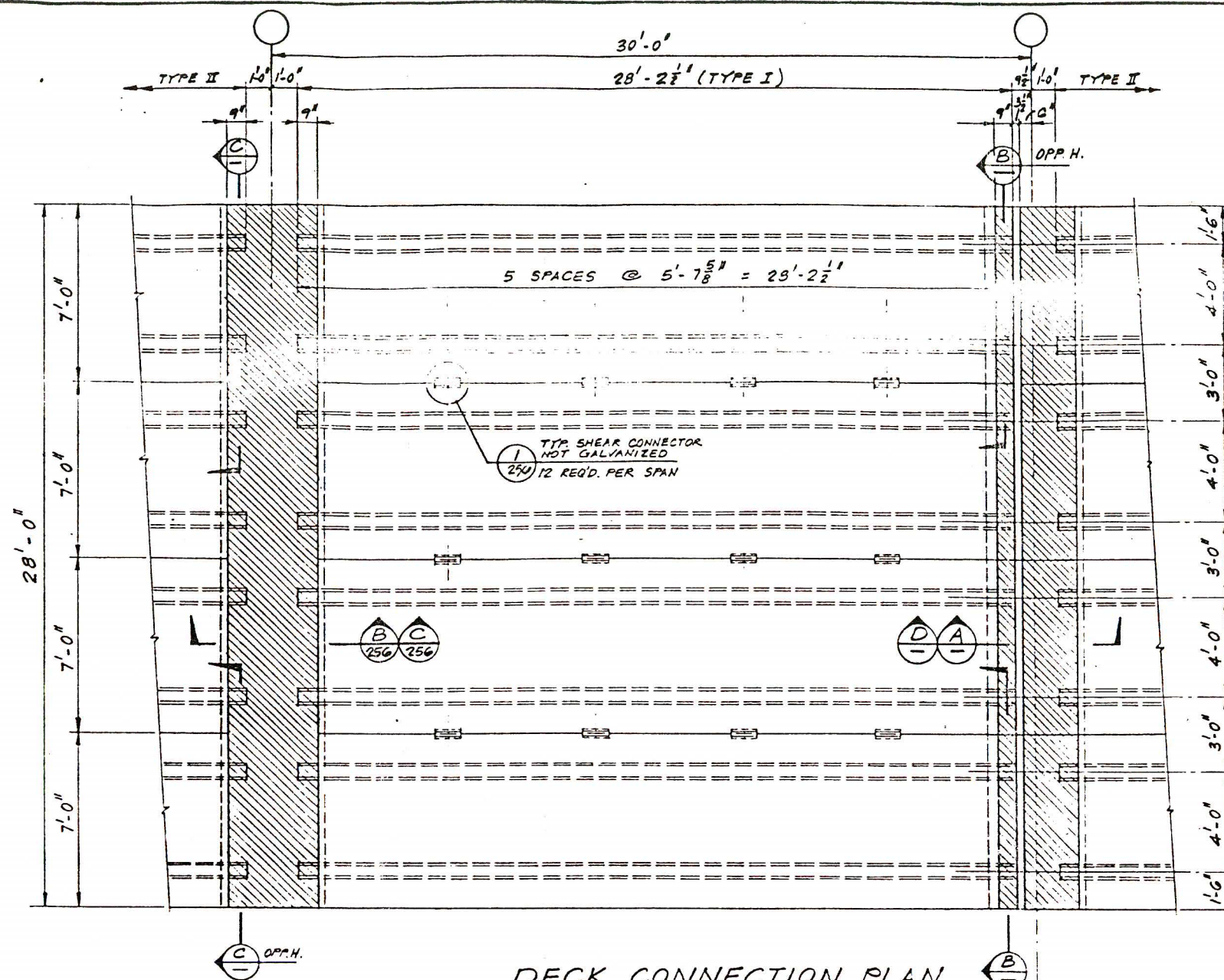
NOTE:
1. FOR GENERAL NOTES SEE DWG. VCT-G-001

SHEAR CONNECTORS
AND PILECAP REINF. RING

MAY 7 1980

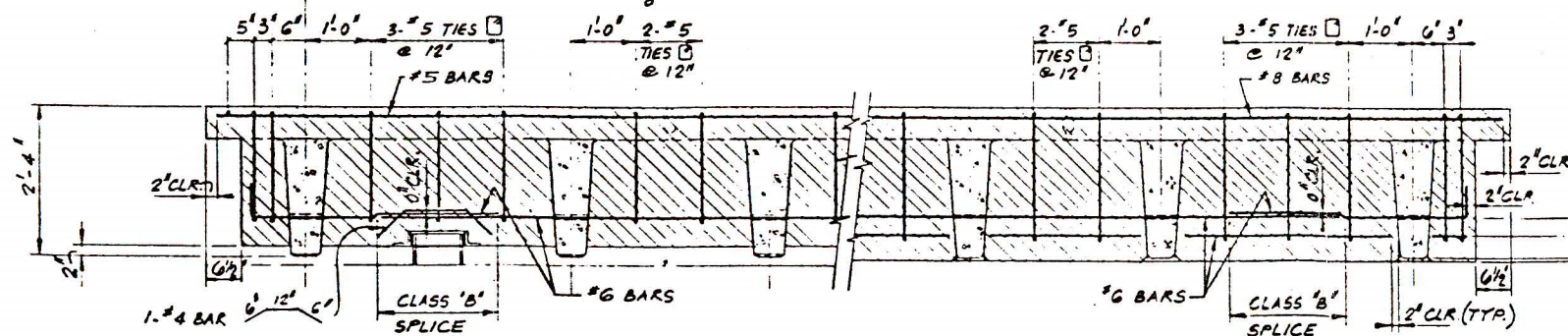
PRELIMINARY DRAWING ISSUE
THIS DRAWING IS ISSUED FOR INFORMATION ONLY.
ANY DETAILS SHOWN ARE SUBJECT TO REVISION. NO
DRAWING IS TO BE CONSIDERED FINAL UNTIL "ISSUED
FOR CONSTRUCTION."

REFERENCES	AK DATE BY APPROVED	REVISIONS	AK DATE BY APPROVED	REVISIONS	SANTA FE TECHNICAL SERVICES COMPANY A subsidiary of Santa Fe International Corporation Houston, Texas	TRESTLE - TYPICAL 6 FILE ANCHOR BENTS PLAN SECTIONS & DETAILS VALDEZ CONTAINER TERMINAL VALDEZ ALASKA
					DRAWN BY DATE April 12, 1980	NOTED
					CHECKED BY	SCALE
					ENGINEER	CONTRACT NO. 3071.00
					S.F. APPROVAL	DRAWING NO. VCT-20-255
					CLIENT APPROVAL	REV.



DECK CONNECTION PLAN

$\frac{3}{4}'' = 1'-0''$ (FOR LOCATIONS SEE DWG. 251)



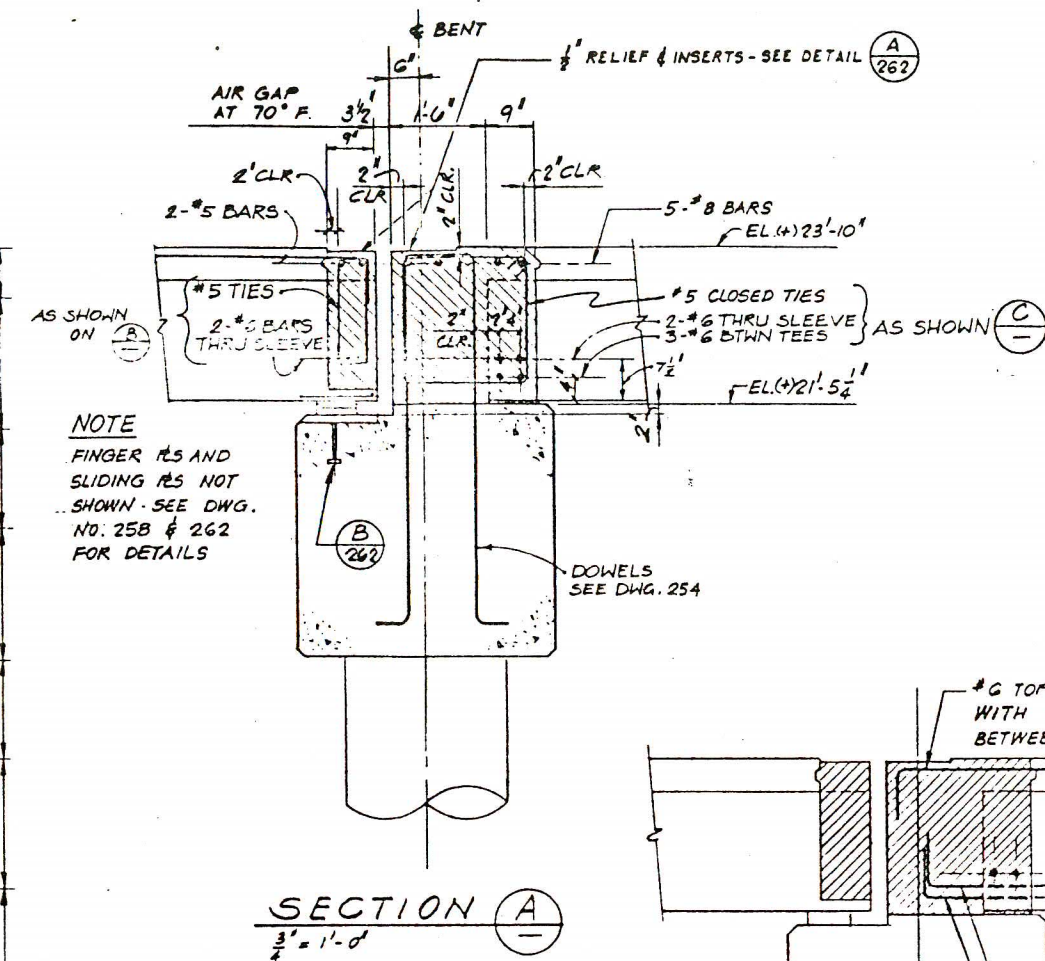
DIAPHRAGM AT SLIDING END

SECTION B

$\frac{3}{4}'' = 1'-0''$

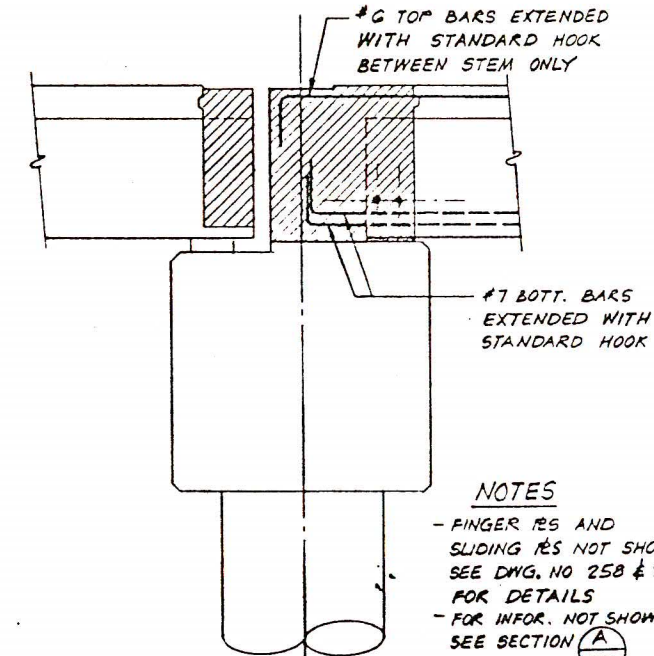
SECTION C

$\frac{3}{4}'' = 1'-0''$



SECTION A

$\frac{3}{4}'' = 1'-0''$



SECTION D

$\frac{3}{4}'' = 1'-0''$

NOTE
FINGER RS AND SLIDING RS NOT SHOWN - SEE DWG. NO. 25B & 262 FOR DETAILS

NOTES
- FINGER RS AND SLIDING RS NOT SHOWN SEE DWG. NO. 25B & 262 FOR DETAILS
- FOR INFO. NOT SHOWN SEE SECTION A


NOTE
1. FOR GENERAL NOTES SEE DWG. VCT-G-001

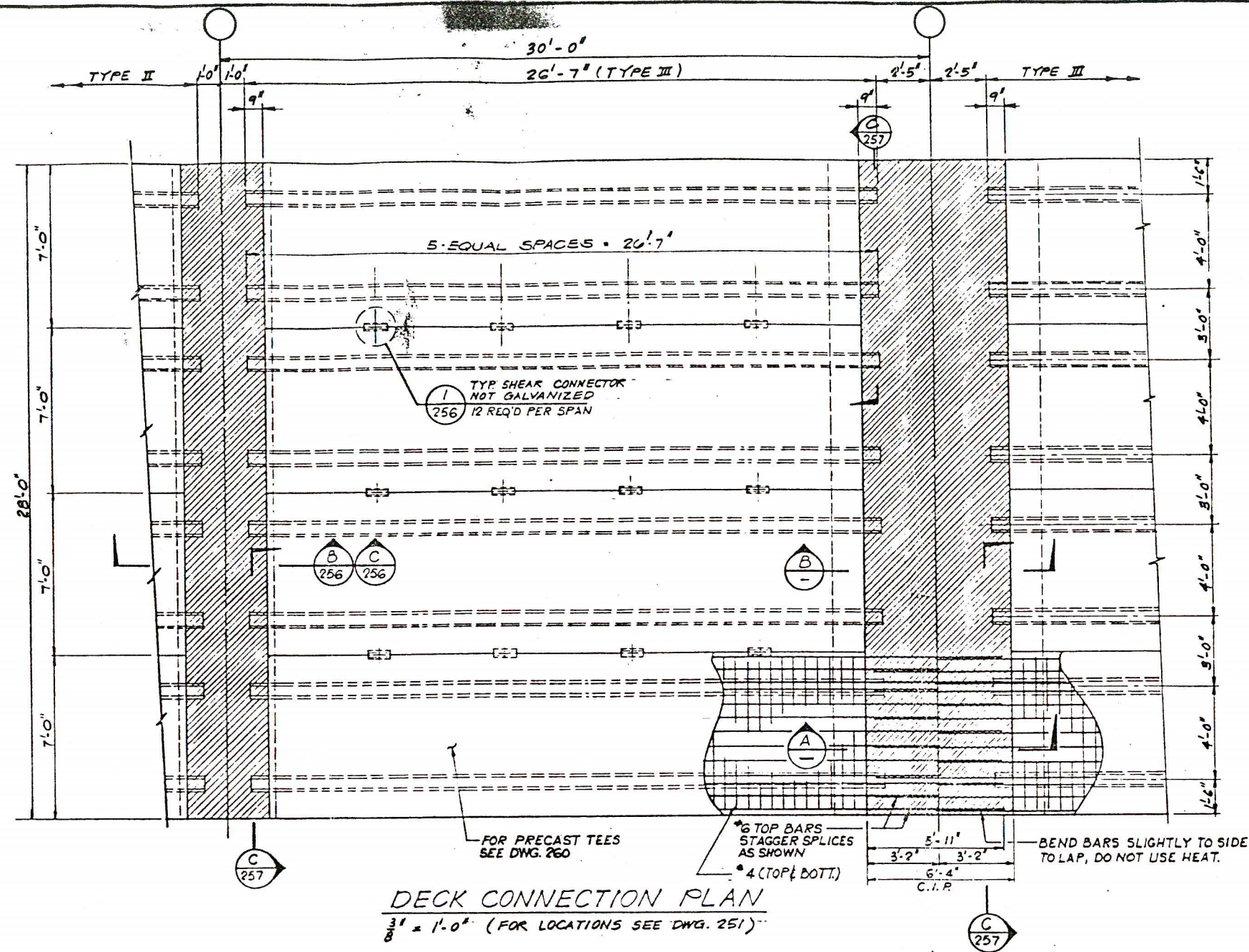
PRELIMINARY DRAWING ISSUE
THIS DRAWING IS ISSUED FOR INFORMATION ONLY. ANY DETAILS SHOWN ARE SUBJECT TO REVISION. NO DRAWING IS TO BE CONSIDERED FINAL UNTIL "ISSUED FOR CONSTRUCTION."

MAY 7 1980

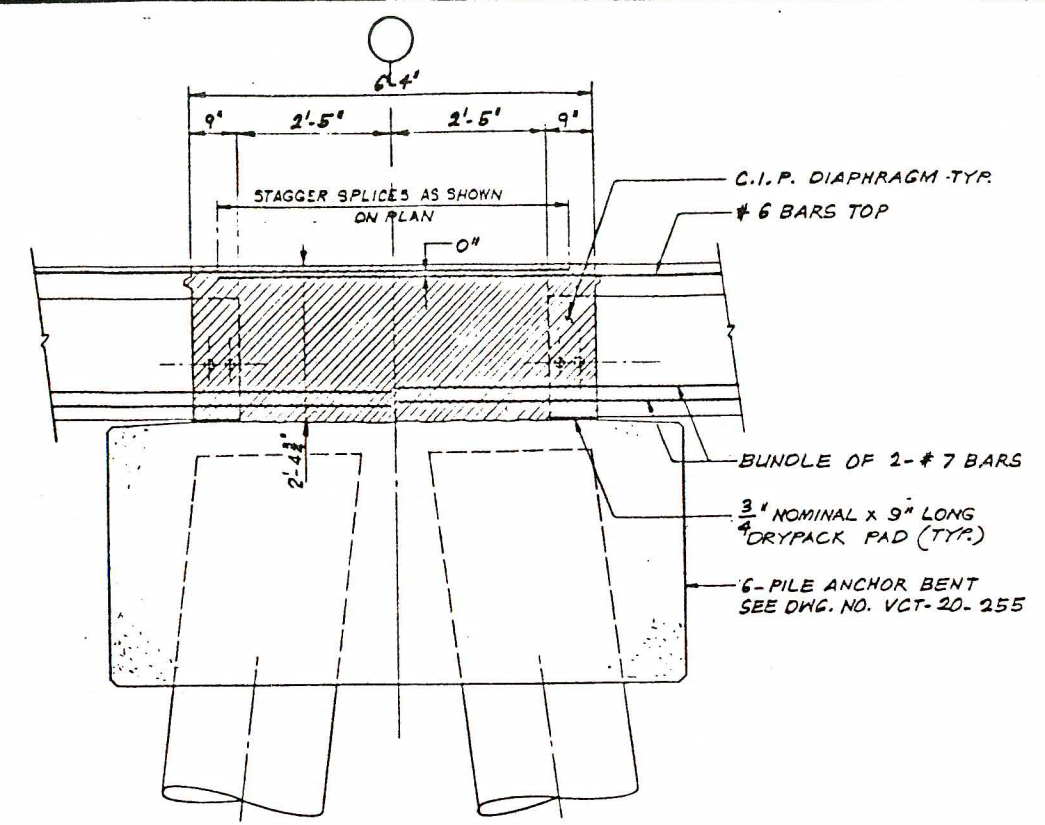
REFERENCES	REV. DATE BY APPROVED	REVISIONS	REV. DATE BY APPROVED	REVISIONS	SANTA FE TECHNICAL SERVICES COMPANY A Subsidiary of Santa Fe International Corporation Houston, Texas	TRESTLE - TYPICAL DECK PANELS AT EXPANSION JOINT SECTIONS & DETAILS VALDEZ CONTAINER TERMINAL VALDEZ ALASKA
	5/5/80				DRAWN BY Thompson	SCALE AS NOTED
					CHECKED BY	CONTRACT NO. 3071.00
					ENGINEER	DRAWING NO. VCT-20-257
					DATE APR 9, 1980	CLIENT APPROVAL
					DATE	REV.



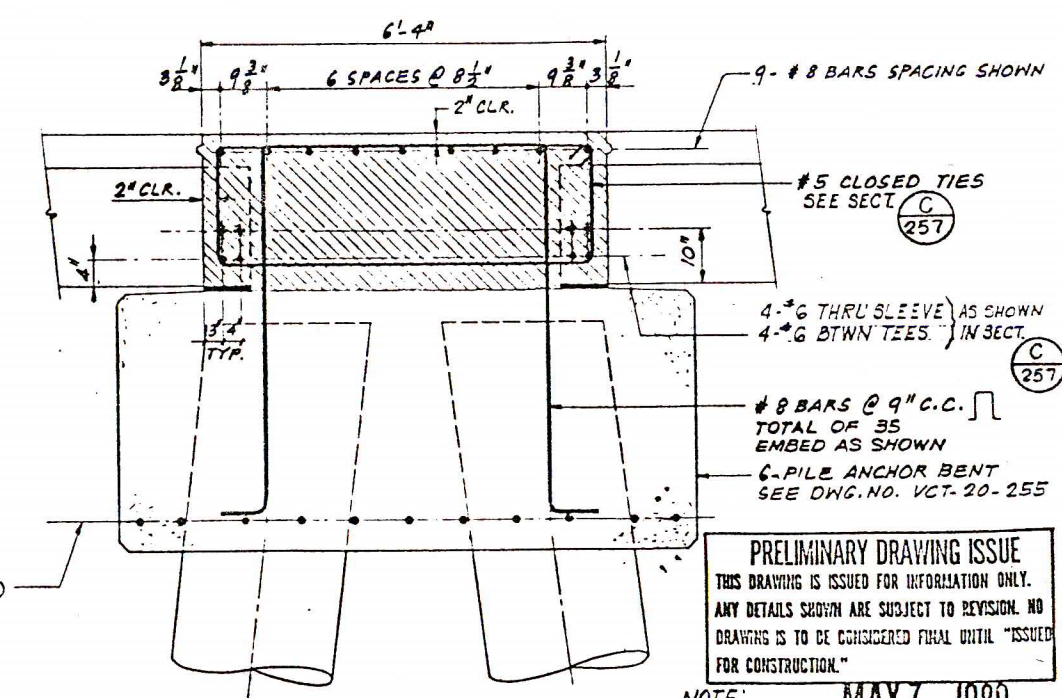
REFERENCES	MK DATE BY APPROVED	REVISIONS	MK DATE BY APPROVED	REVISIONS	<div> SANTA FE TECHNICAL SERVICES COMPANY</div> <div>A Subsidiary of Santa Fe International Corporation Houston Texas</div>	TRESTLE - TYPICAL DECK PANELS AT 2 FILE BENTS							
						SECTIONS & DETAILS							
						VALDEZ CONTAINER TERMINAL							
						VALDEZ ALASKA							
						DRAWN BY <i>thay</i>	CHECKED BY	ENGINEER	S.F. APPROVAL	SCALE AS NOTED	CONTRACT NO. 3071.00	DRAWING NO. VOT-20-258	REV.
						DATE APRIL 14, 1980	DATE	DATE	CLIENT APPROVAL				



DECK CONNECTION PLAN
 $\frac{3}{8}'' = 1'-0''$ (FOR LOCATIONS SEE DWG. 251)



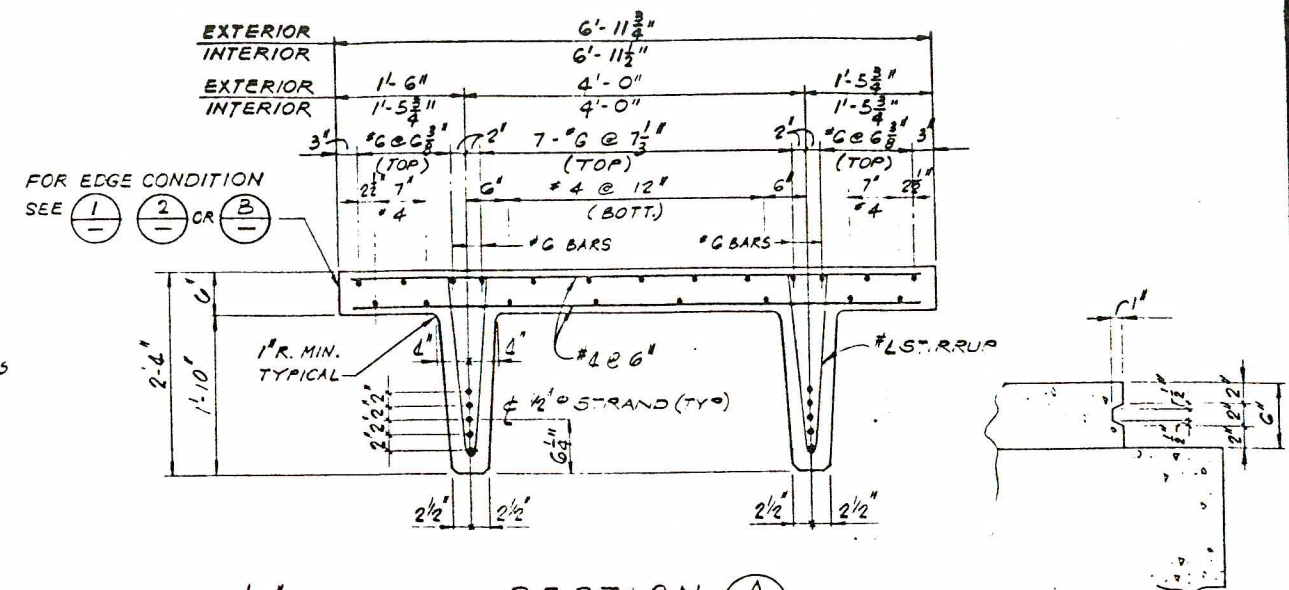
SECTION A
 $\frac{3}{8}'' = 1'-0''$



SECTION B
 $\frac{3}{8}'' = 1'-0''$

PRELIMINARY DRAWING ISSUE
 THIS DRAWING IS ISSUED FOR INFORMATION ONLY. ANY DETAILS SHOWN ARE SUBJECT TO REVISION. NO DRAWING IS TO BE CONSIDERED FINAL UNTIL "ISSUED FOR CONSTRUCTION."
 NOTE: MAY 7 1980
 1. FOR GENERAL NOTES SEE DWG. VCT-G-001

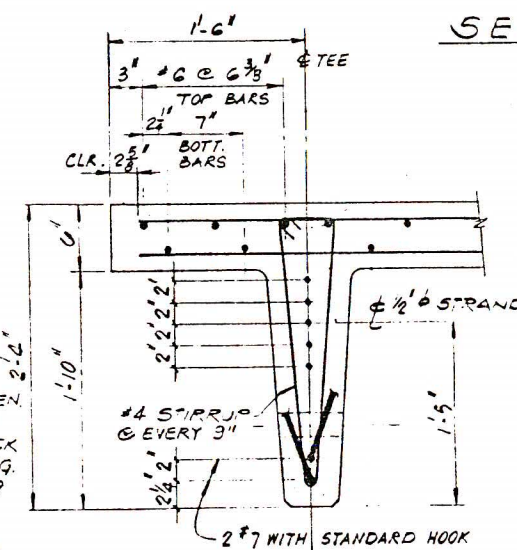
REFERENCES	DATE BY APPROVED	REVISIONS	DATE BY APPROVED	REVISIONS	SANTA FE TECHNICAL SERVICES COMPANY <small>A Subsidiary of Santa Fe International Corporation Houston, Texas</small>				TRESTLE - TYPICAL DECK PANELS AT 6-PILE ANCHOR BENTS SECTIONS & DETAILS VALDEZ CONTAINER TERMINAL VALDEZ ALASKA			
					DRAWN BY <i>Thompson</i>	CHECKED BY	ENGINEER	SF APPROVAL	SCALE NOTED	CONTRACT NO. 3071 00	DRAWING NO. VCT-20-	REV. A
					DATE April 9, 1980	DATE	DATE	CLIENT APPROVAL				



SECTION (A)

TYP. TONGUE & GROOVE

DETAIL

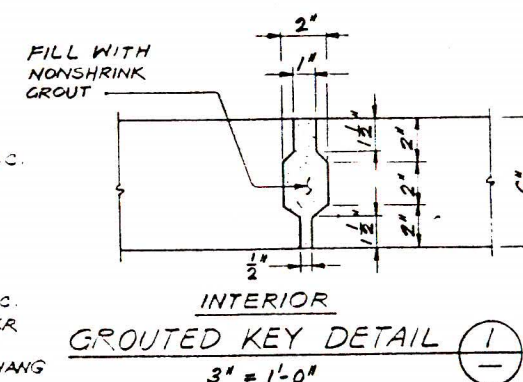
$$\underline{1\frac{1}{2}'' = 1' - 0''}$$


TYP END SECTION @ 2-PILE BENT

END SECTION @ ANCHOR BENT (C)

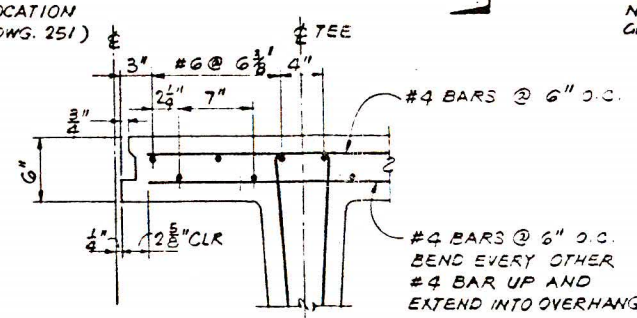
TYPE III MAY 7 1980

PRELIMINARY DRAWING ISSUE
THIS DRAWING IS ISSUED FOR INFORMATION ONLY.
ALL DETAILS SHOWN ARE SUBJECT TO REVISION.
THIS DRAWING IS TO BE CONSIDERED FINAL UNTIL "ISSUED FOR CONSTRUCTION."



ROUTED KEY DETAIL


FOR INTERIOR KEY @ MECH. CONNECTOR -
SEE SECTION (E)



TYPICAL BEAM TRANSVERSE SECTION

SLAB DETAIL @ MECH. CONN

REFERENCES	MK	DATE	BY	APPROVED	REVISIONS	MK	DATE	BY	APPROVED	REVISIONS
						A	5/9/80			

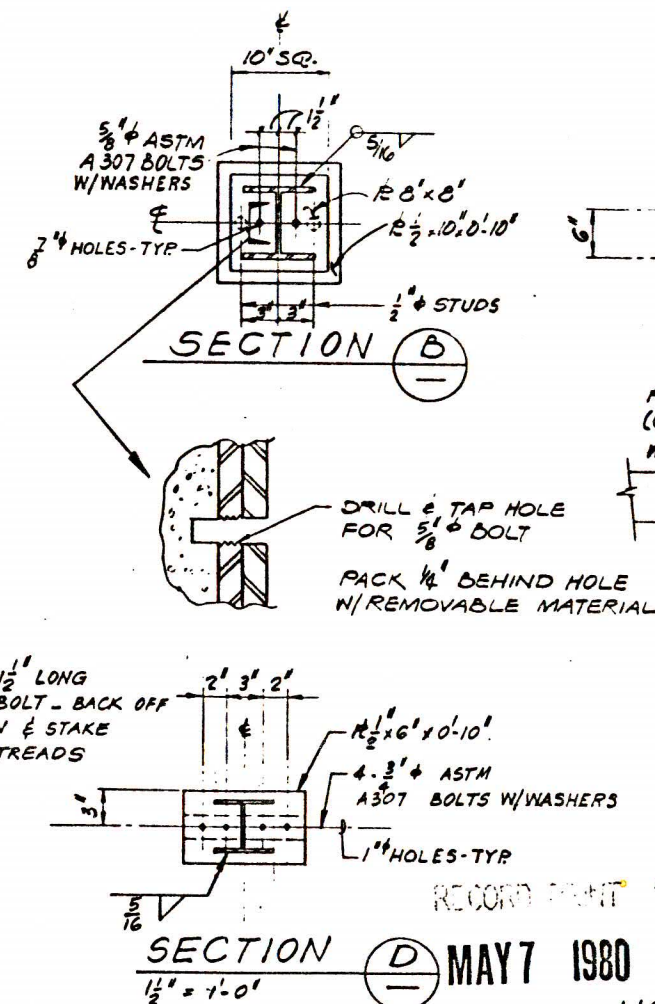
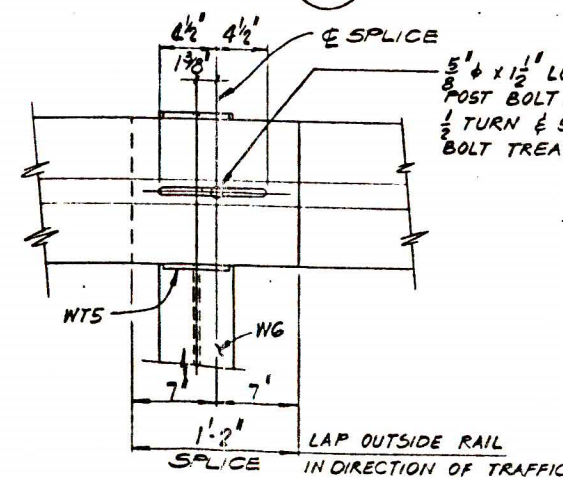
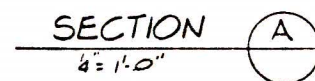


SANTA FE TECHNICAL SERVICES COMPANY
A Subsidiary of Santa Fe International Corporation
Houston, Texas

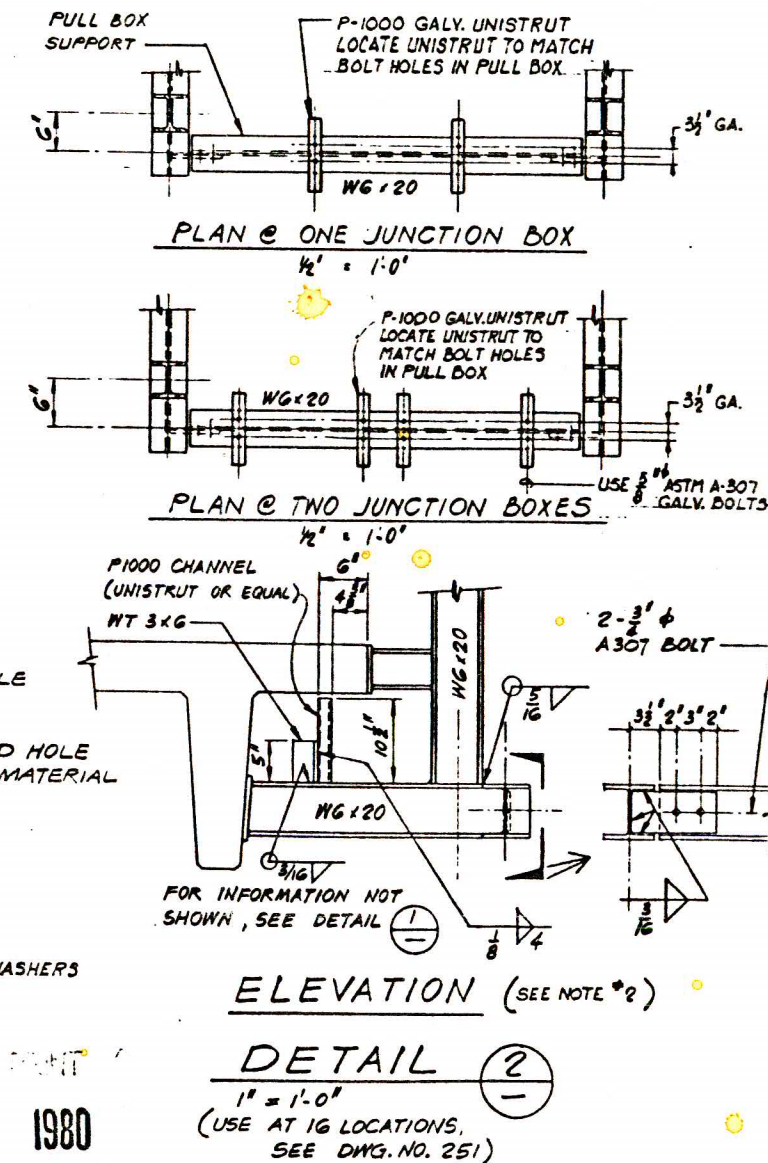
DRAWN BY <i>J.P. HANSEN</i>	CHECKED BY	ENGINEER	SF APPROVAL
DATE MAY 9, 1980	DATE	DATE	CLIENT APPROVAL

TRESTLE - TYPICAL PRECAST CONCRETE DOUBLE TEES -
TYPE I, II & III SECTIONS & DETAILS
VALDEZ CONTAINER TERMINAL
VALDEZ, ALASKA

SCALE NOTED	CONTRACT NO. 3C71 CO	DRAWING NO. VOT-PC-250
----------------	-------------------------	---------------------------





PRELIMINARY DRAWING ISSUE
THIS DRAWING IS ISSUED FOR INFORMATION ONLY.
ANY DETAILS SHOWN ARE SUBJECT TO REVISION. NO
DRAWING IS TO BE CONSIDERED FINAL UNTIL "ISSUED
FOR CONSTRUCTION."



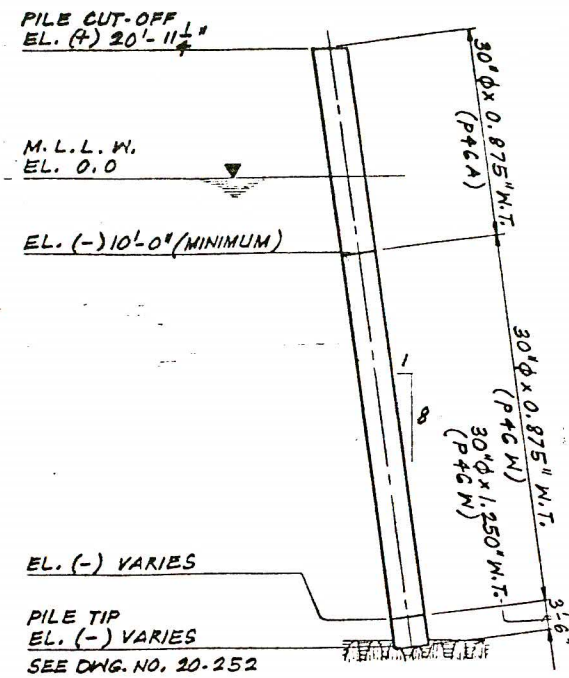
NOTE

- 1 - FOR GENERAL NOTES SEE DWG. VCT-G-001
- 2 - GALVANIZE ENTIRE GUARDRAIL POST ASSEMBLY AFTER FABRICATION

REFERENCES	MK DATE BY APPROVED		REVISIONS		MK DATE BY APPROVED		REVISIONS		 SANTA FE TECHNICAL SERVICES COMPANY <small>A Subsidiary of Santa Fe International Corporation Houston, Texas</small>	TRESTLE - MISCELLANEOUS SECTIONS & DETAILS		
										VALDEZ CONTAINER TERMINAL		
										VALDEZ ALASKA		
									DRAWN BY 	CHECKED BY	ENGINEER	S F APPROVAL
									DATE April 8, 1980	DATE	DATE	CLIENT APPROVAL
									SCALE NOTED	CONTRACT NO. 3071 00		DRAWING NO. VCT-20-261

[illegible]

BENT NO.	PILE CUT-OFF ELEVATION
1	(+) 20'-11 $\frac{1}{2}$ "
2 TO 5	(+) 21'-1 $\frac{1}{4}$ "
7 TO 10	(+) 21'-1 $\frac{1}{4}$ "
11	(+) 20'-11 $\frac{1}{2}$ "
12 TO 15	(+) 21'-1 $\frac{1}{4}$ "
17 TO 20	(+) 21'-1 $\frac{1}{4}$ "
21	(+) 20'-11 $\frac{1}{2}$ "
22 TO 25	(+) 21'-1 $\frac{1}{4}$ "
27 TO 30	(+) 21'-1 $\frac{1}{4}$ "
31	(+) 20'-11 $\frac{1}{2}$ "
32 TO 33	(+) 21'-1 $\frac{1}{4}$ "
37 TO 40	(+) 21'-1 $\frac{1}{4}$ "
41	(+) 20'-11 $\frac{1}{2}$ "
42 TO 45	(+) 21'-1 $\frac{1}{4}$ "
47 TO 50	(+) 21'-1 $\frac{1}{4}$ "
51	(+) 20'-11 $\frac{1}{2}$ "



BATTER PILE

INSIDE FACE OF PILE

INSIDE FACE OF PILE

F.P., TYP.

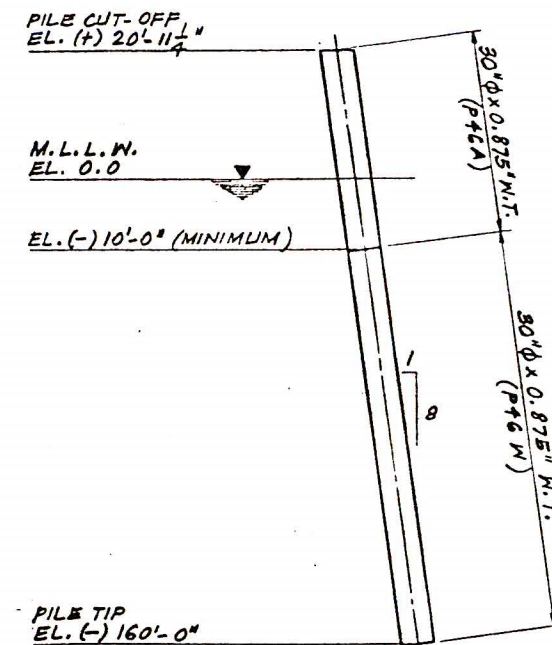
F.P., TYP.

1

3

DIFFERENT WALL THICKNESS

N. T. S.




BATTER PILE

NOTE:
1. FOR GENERAL NOTES SEE DWG VCT-G-001

RECORD PRINT ^

MAY 7 1980

PRELIMINARY DRAWING ISSUE
THIS DRAWING IS ISSUED FOR INFORMATION ONLY.
ANY DETAILS SHOWN ARE SUBJECT TO REVISION. NO
DRAWING IS TO BE CONSIDERED FINAL UNTIL "ISSUED
FOR CONSTRUCTION."

REFERENCES	MK	DATE	BY	APPROVED	REVISIONS	MK	DATE	BY	APPROVED	REVISIONS	 SANTA FE TECHNICAL SERVICES COMPANY <small>A Subsidiary of Santa Fe International Corporation Houston, Texas</small>	TRESTLE - PILE DETAILS							
												DRAWN BY D.D.S.	CHECKED BY	ENGINEER	S.F. APPROVAL	VALDEZ CONTAINER TERMINAL			
																VALDEZ, ALASKA			
																SCALE NOTED	CONTRACT NO. 3071 00	DRAWING NO. VCT -20- 263	RE A