

NOVEMBER 2018



© Gary Minish

VALDEZ NEW BOAT HARBOR

CONSTRUCTION

Phase 2 Uplands Facilities and Inner Harbor Facilities

The contractors corrected most of the Punchlist items noted during the Architectural Substantial Completion inspection and the Electrical and Mechanical engineers performed their inspections of the buildings. Zastrow installed the flagpole in the plaza area east of the Warehouse Building and decorative fish poles along the boardwalk. Zastrow also finished erecting structural timbers and roof decking for the east and west picnic canopies.

Pacific Pile and Marine (PPM) repaired the 450-ton crane and off-loaded materials from the second supply barge that arrived October 28 with Drive-down (DD) float modules, transfer bridge and pontoon, and the remaining materials that were stored in the Seattle area. Mooring floats were off-loaded to the water, assembled and staged for installation with piling after the DD float is installed. DD float components were off-loaded to the uplands, assembled into modules and placed in the water for further assembly. Pilings were installed, and the pile cap welded for the DD bridge abutment. Placement of the 140-foot long bridge and support pontoon is now scheduled for mid-January.

Harris Sand and Gravel (HSG) continued installing piping for water systems on the head floats and main floats for the west two-thirds of the Mooring Basin. Puffin performed preliminary work for installation of electrical systems on the floats. Zastrow placed reinforced concrete for the footing and started placing forms and rebar for the bridge abutment retaining wall.

PROJECT ACHIEVEMENTS

- Performed Substantial Completion inspections for building electrical and mechanical systems
- Erected the structural framing and roof decking for east and west picnic canopies
- Installed piling and pile cap for DD bridge abutment
- Started construction of concrete retaining wall for DD bridge abutment



Decorative fish poles with banner hooks installed along boardwalk

NOVEMBER 2018 PROJECT UPDATE (CONT.)

DESIGN TEAM - CONSTRUCTION SUPPORT

R&M continued reviewing submittals, responded to Requests for Information (RFIs), clarifications of construction documents and conflicts in the field. R&M resumed inspection of drilling and pile driving and provided inspection, sampling and testing of concrete for the abutment retaining wall. R&M coordinated with ADEC during review of design revisions that were submitted for water services from the Uplands to the floats.

USACE NAVIGATION IMPROVEMENTS

The USACE and City representatives met and discussed open items, the closeout process and the City's financial obligations under the contract. The City will continue working with the USACE on closeout of the contract. The Coast Guard still needs to install the Aids to Navigation features for the new harbor.

FUTURE MILESTONES

- Finish the concrete retaining wall for the DD bridge abutment
- Install piling and rock anchors (and test tension) for DD bridge mooring frame
- Place the bridge, support pontoon, DD float and mooring piles
- Finish installing electrical and mechanical systems on mooring floats T, U, V and W
- Install the piling, floats and gangway for the east portion of the Mooring Basin
- Install electrical and mechanical systems on mooring floats R and S and the DD float
- Closeout City's contract with USACE for the dredging and breakwater work
- Commission and test the Bilge Treatment equipment (after the mooring floats are completed)



Drilling the second 30" diameter pile for DD float bridge abutment

PROJECT TEAM

Nate Duval, Capital Facilities Project Manager, City of Valdez || 907.835.5478 ext. 1

Ronnie Barcak, Project Manager, USACE || 907.753.5755

Kim Nielsen, Group Manager, Waterfront Engineering, R&M Consultants || 907.646.9602

Andy Romine, Project Manager, Pacific Pile and Marine || 907.360.4580

Ron Rozak, Construction Manager, Arcadis || 907.382.2933





West picnic canopy almost ready for installing metal roofing



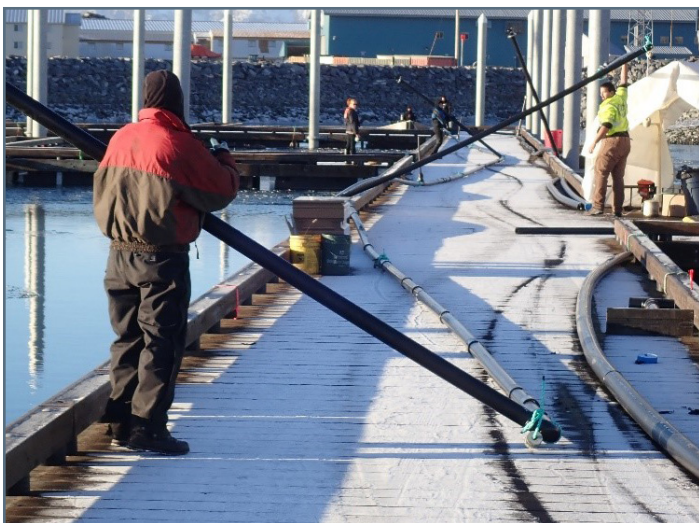
Installing tongue and groove deck on roof for west picnic canopy



Tying rebar in footing form for bridge abutment retaining wall



Placing concrete for footing of abutment retaining wall



Placing assembled piping in water to attach to hangers on floats



Divers attach water pipe to hangers bolted to side of floats

PROJECT SCHEDULE

Task	2016	2017				2018				2019			
	Q4	Q1	Q2	Q3	Q4	Q1	Q2	Q3	Q4	Q1	Q2	Q3	Q4
CITY OF VALDEZ WORK													
Phase 1 Uplands (Civil work except paving)	■												
Phase 2 *													***
Design/Bid/Award/NTP	■	■	■										
Mooring Floats													
Fabrication/Delivery				■	■	■	■	■	■				
On-site Construction										■	■	■	■
Drive Down Float													
Fabrication/Delivery				■	■	■	■	■	■				
On-site Construction										■	■	■	■
In-water Rock Removal													
West Rock										■	■	■	■
East Rock										■	■	■	■
Uplands Facilities (Warehouse, East Restroom, Bilge Water Bldg.)													
Fabrication/Delivery				■	■	■	■	■	■				
On-site Construction										■	■	■	■
Paving/Landscaping/Site Furnishings										■	■	■	■
Master Waterfront Plan (To be determined)													
Phase 3 Future Facilities (To be determined with Master Plan)													
Launch Ramp, Fish Cleaning Station, Wash-Down Pad, W. Restroom													
CORPS OF ENGINEERS (USACE) WORK													
Harbor Dredging and Breakwater Construction**	■		■	■	■								

*Solid lines reflect PPM's October 2018 schedule and PPM's recent communications about potential changes; PPM's November update was not available for this report.

** WMC contract for dredging and breakwater is complete. *** Contract requires Phase 2 work to be completed by October 1, 2019.

BUDGET SUMMARY

Description	Original Budget	Revised Budget	Committed	Expenditures 11/30/18	% Spent	Estimate at Completion
DESIGN	\$ 2,451,971	\$ 3,892,420	\$ 3,892,420	\$ 3,458,683	89%	\$ 3,892,420
Design	\$ 1,851,971	\$ 2,215,983	\$ 2,215,983	\$ 2,231,917	101%	\$ 2,231,917
Design Team Services During Construction	\$ 600,000	\$ 1,676,437	\$ 1,676,437	\$ 1,226,766	73%	\$ 1,660,503
PROJECT MANAGEMENT	\$ 2,340,548	\$ 2,919,405	\$ 2,919,405	\$ 2,683,926	92%	\$ 3,090,306
Project Management	\$ 1,740,548	\$ 2,547,868	\$ 2,547,868	\$ 2,312,389	91%	\$ 2,718,769
Inspection/Testing	\$ 600,000	\$ 371,537	\$ 371,537	\$ 371,537	100%	\$ 371,537
USACE CONSTRUCTION - CITY PORTION	\$ 9,345,453	\$ 7,645,453	\$ 7,525,453	\$ 5,141,258	67%	\$ 6,522,845
Initial Basin	\$ 7,145,453	\$ 7,145,453	\$ 7,145,453	\$ 4,761,258	67%	\$ 6,460,980
Other Basin Modifications	\$ 2,200,000	\$ 500,000	\$ 380,000	\$ 380,000	76%	\$ 61,864
CITY CONSTRUCTION	\$ 39,023,904	\$ 44,738,748	\$ 44,661,583	\$ 39,898,831	89%	\$ 44,738,748
Phase 1 Uplands	\$ 19,013,040	\$ 19,191,437	\$ 19,191,437	\$ 19,191,437	100%	\$ 19,191,437
Phase 2 Base/Drivedown Floats, Uplands Fac.	\$ 8,976,100	\$ 25,090,832	\$ 25,090,832	\$ 20,390,181	81%	\$ 25,090,832
Upland Facilities (with Phase 2)	\$ 4,046,643	\$ -	\$ -	\$ -	0%	\$ -
Drive Down Float (with Phase 2)	\$ 4,951,721	\$ -	\$ -	\$ -	0%	\$ -
Drive-Down Float In-water Mods (with Phase 2)	\$ 1,342,500	\$ -	\$ -	\$ -	0%	\$ -
Hotel Hill Clearing	\$ 64,900	\$ 64,900	\$ 64,900	\$ 64,900	100%	\$ 64,900
Fish Cleaning	\$ 324,000	\$ -	\$ -	\$ -	0%	\$ -
Electric Primary	\$ 225,000	\$ 311,579	\$ 311,579	\$ 252,312	81%	\$ 311,579
CCTV/Security/Head End Equipment	\$ 80,000	\$ 80,000	\$ 2,834	\$ -	0%	\$ 80,000
ADMINISTRATION	\$ 60,000	\$ 100,000	\$ 99,245	\$ 92,554	93%	\$ 100,000
FFE	\$ 100,000	\$ 100,000	\$ -	\$ -	0%	\$ 100,000
CONTINGENCY (@ 15% original budget)	\$ 7,998,281	\$ 1,924,131				\$ 2,875,838
TOTAL CITY FUNDED	\$ 61,320,158	\$ 61,320,158	\$ 59,098,106	\$ 51,275,252	84%	\$ 61,320,158
USACE FUNDED**	\$ 21,277,761	\$ 21,277,761	\$ 21,277,761	\$ 20,558,716	97%	\$ 21,277,761
TOTAL CITY/USACE FUNDING	\$ 82,597,919	\$ 82,597,919	\$ 80,375,867	\$ 71,833,968	87%	\$ 82,597,919

* Data includes expenses from 5/22/14 which is the start of Bond eligible costs authorized by COV Resolution 14-33. \$254,321.77 in R&M expenses and other costs are not included.

** Reconciliation with USACE is in process; updates are anticipated.