

CITY OF VALDEZ KELSEY DOCK DECKING REPLACEMENT

VALDEZ, ALASKA
DECEMBER 2019
PROJECT NO: 18-350-1904

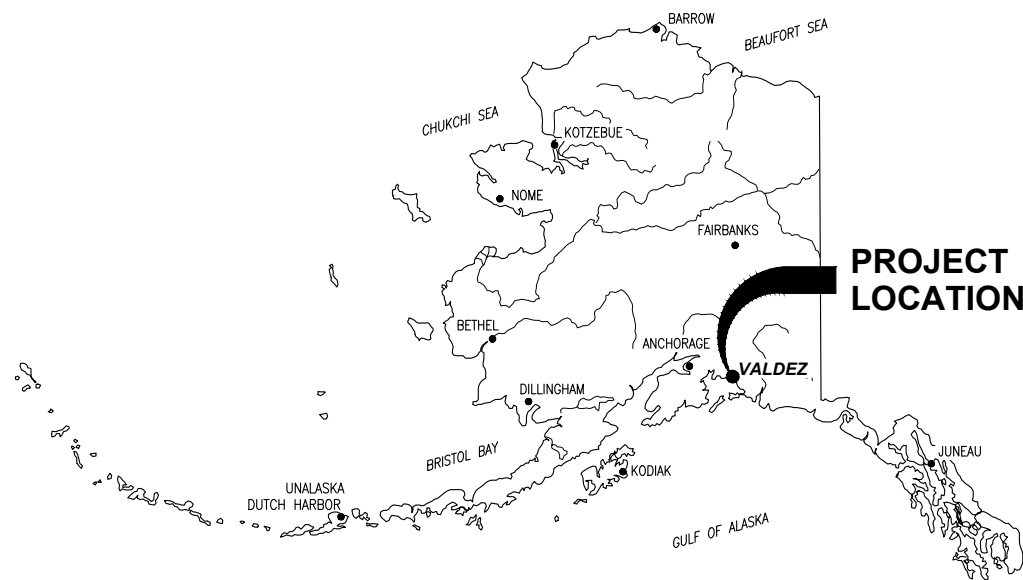
DRAWING INDEX

SHEET TITLE	SHEET NO.
COVER SHEET & DRAWING INDEX	1
AREA PLAN	2
DOCK PLAN - WEST	3
DOCK PLAN - EAST	4
DECKING DETAILS	5
TRANSITION DETAILS	6
HANDRAIL LAYOUT	7
HANDRAIL DETAILS	8
GENERAL NOTES	9

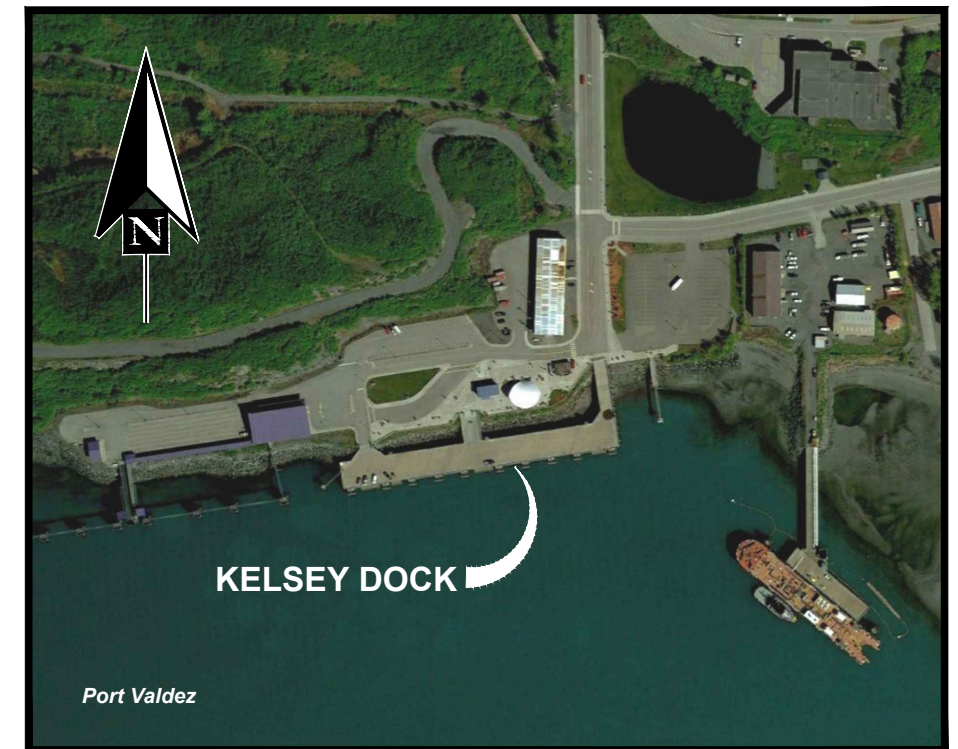
WORK SUMMARY

THE PROJECT SCOPE OF WORK INCLUDES:

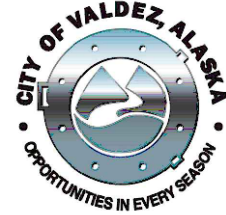
1. DEMOLITION OF THE EXISTING DECK WEAR SURFACE AND REPLACEMENT WITH NEW TIMBER.
2. INSTALLATION OF NEW TIMBER HANDRAIL.
3. MODIFICATION OF EXISTING TIMBER HANDRAIL (ALT B.1).



STATE OF ALASKA



VICINITY MAP



ISSUED FOR BID
12/06/19

PND Engineers, Inc. (PND) is not responsible for safety programs, methods or procedures of operation, or the construction of the design shown on these drawings. Where specifications are general or not called out, the specifications shall conform to standards of industry. Drawings are for use on this project only and are not intended for reuse without written approval from PND. Drawings are also not to be used in any manner that would constitute a detriment directly or indirectly to PND.

REV	DATE	DESCRIPTION

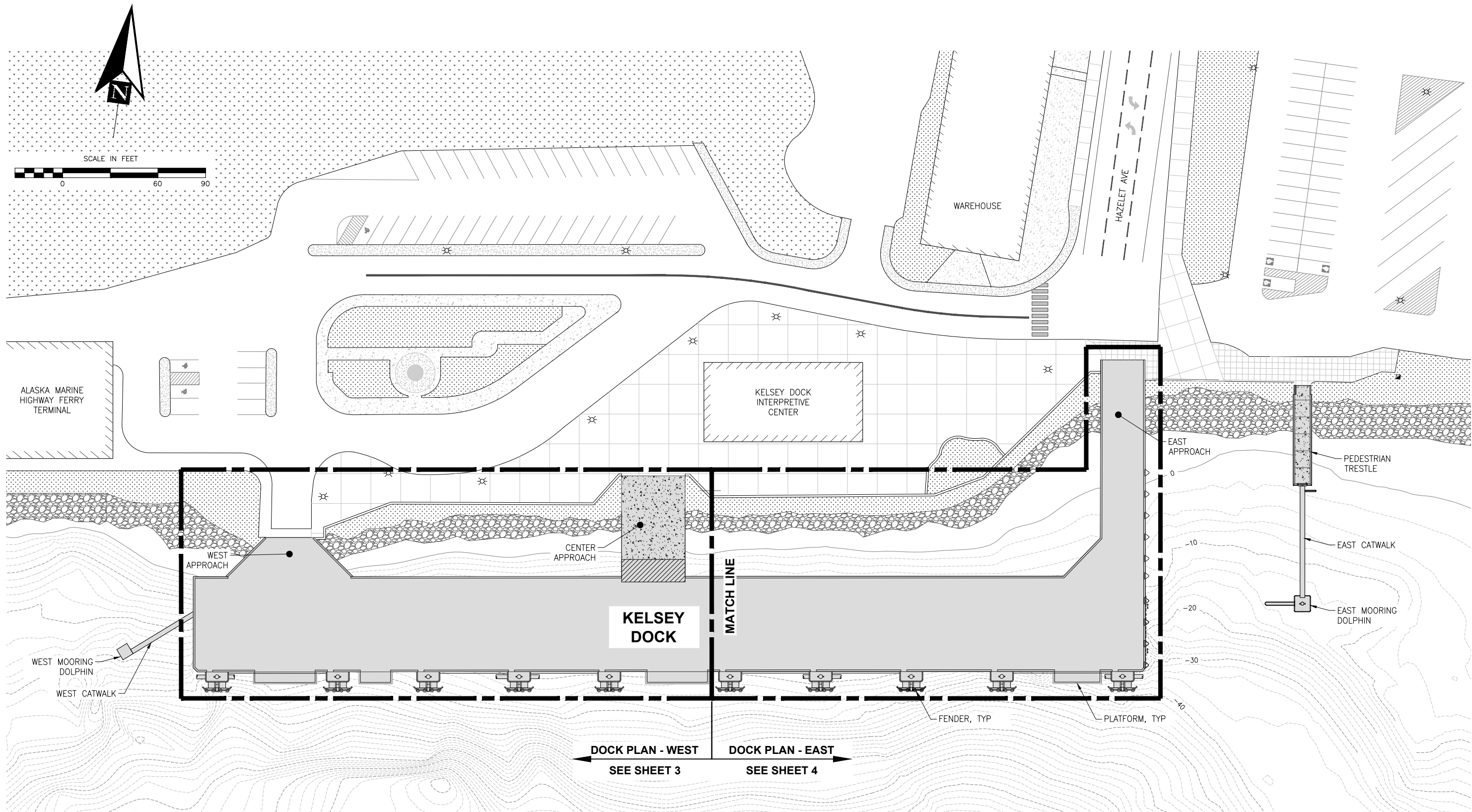


DATE: 12/06/19

1506 West 36th Avenue
Anchorage, Alaska 99503
Phone: 907.561.1011
Fax: 907.563.4220
www.pndengineers.com



PROJECT: CITY OF VALDEZ KELSEY DOCK DECKING REPLACEMENT			
TITLE: COVER SHEET & DRAWING INDEX			
DESIGNED BY: MAB/BJ	DATE: 12/06/2019	SHEET NO: 1	OF 9
CHECKED BY: CC	PND PROJECT NO: 191113		



ISSUED FOR BID
12/06/19

PND Engineers, Inc. (PND) is not responsible for safety programs, methods or procedures of operation, or the construction of the design shown on these drawings. Where specifications are general or not called out, the specifications shall conform to standards of industry. Drawings are for use on this project only and are not intended for reuse without written approval from PND. Drawings are also not to be used in any manner that would constitute a detriment directly or indirectly to PND.

REV	DATE	DESCRIPTION



DATE: 12/06/19

1506 West 36th Avenue
Anchorage, Alaska 99503
Phone: 907.561.1011
Fax: 907.563.4220
www.pndengineers.com



PROJECT: CITY OF VALDEZ
KELSEY DOCK DECKING REPLACEMENT

TITLE: AREA PLAN

DESIGNED BY: MAB/BJ DATE: 12/06/2019 SHEET NO:
CHECKED BY: CC PND PROJECT NO: 191113

2 OF 9



PHOTO #1



PHOTO #2

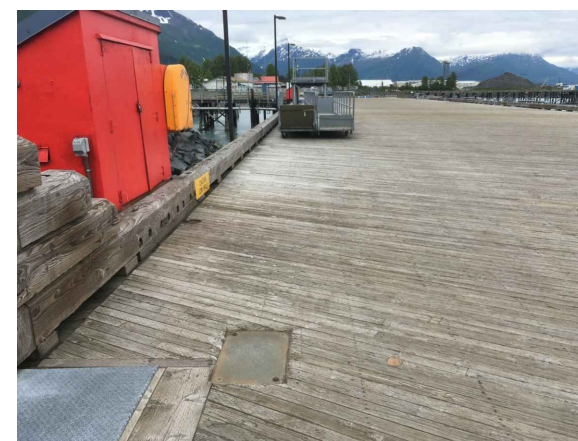
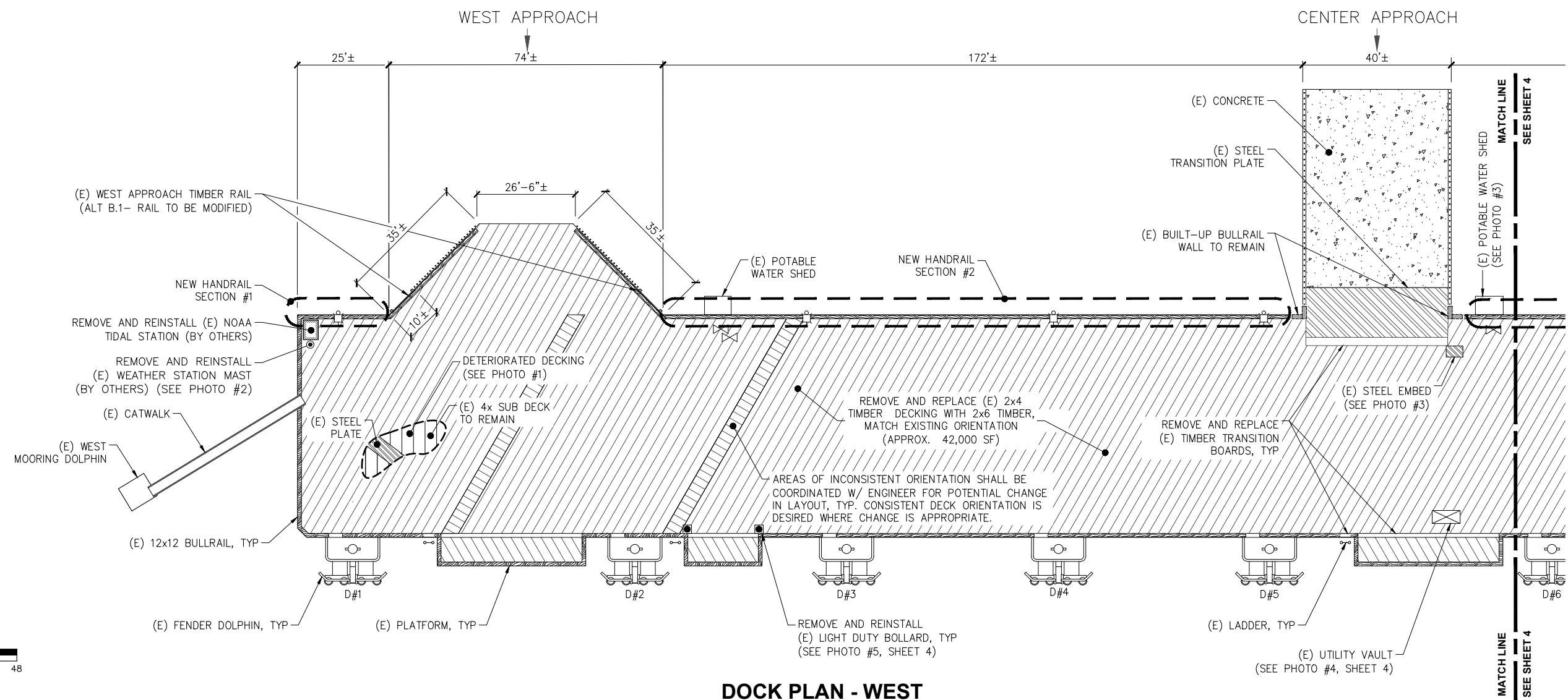
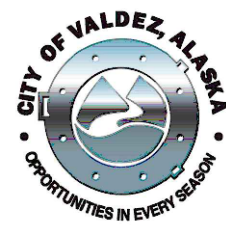


PHOTO #3

SHEET LEGEND	
	LIGHT POLE
	WATER SHUTOFF VALVE
	LIGHT DUTY BOLLARD
	TIMBER BULL RAIL
	DECKING ORIENTATION
	CONCRETE SURFACING
	STEEL



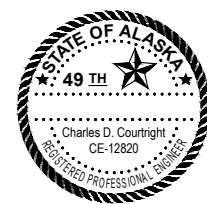
DOCK PLAN - WEST



ISSUED FOR BID
12/06/19

PND Engineers, Inc. (PND) is not responsible for safety programs, methods or procedures of operation, or the construction of the design shown on these drawings. Where specifications are general or not called out, the specifications shall conform to standards of industry. Drawings are for use on this project only and are not intended for reuse without written approval from PND. Drawings are also not to be used in any manner that would constitute a detriment directly or indirectly to PND.

REV	DATE	DESCRIPTION



DATE: 12/06/19

1506 West 36th Avenue
Anchorage, Alaska 99503
Phone: 907.561.1011
Fax: 907.563.4220
www.pndengineers.com



PROJECT: CITY OF VALDEZ KELSEY DOCK DECKING REPLACEMENT			
TITLE: DOCK PLAN - WEST			
DESIGNED BY: MAB/BJ	DATE: 12/06/2019	SHEET NO:	3 OF 9
CHECKED BY: CC	PND PROJECT NO: 191113		

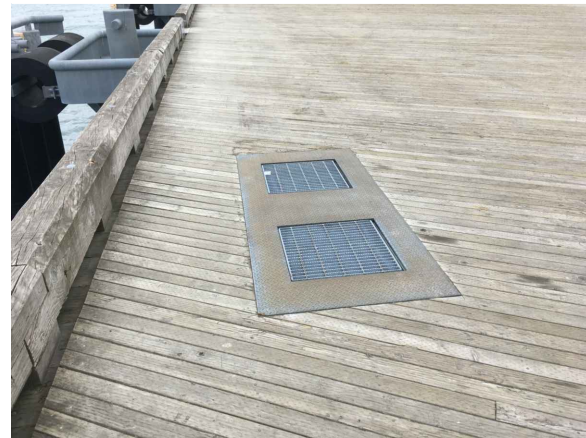


PHOTO #4



PHOTO #5

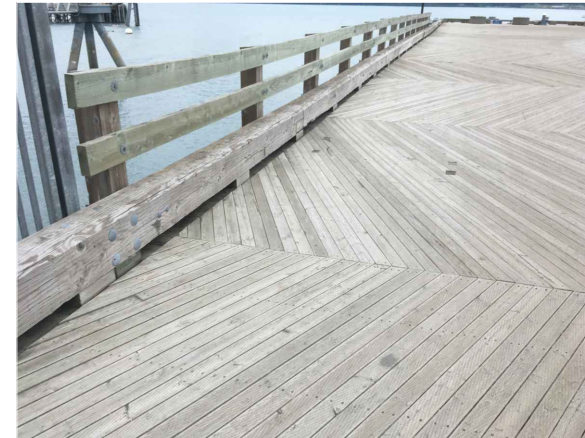
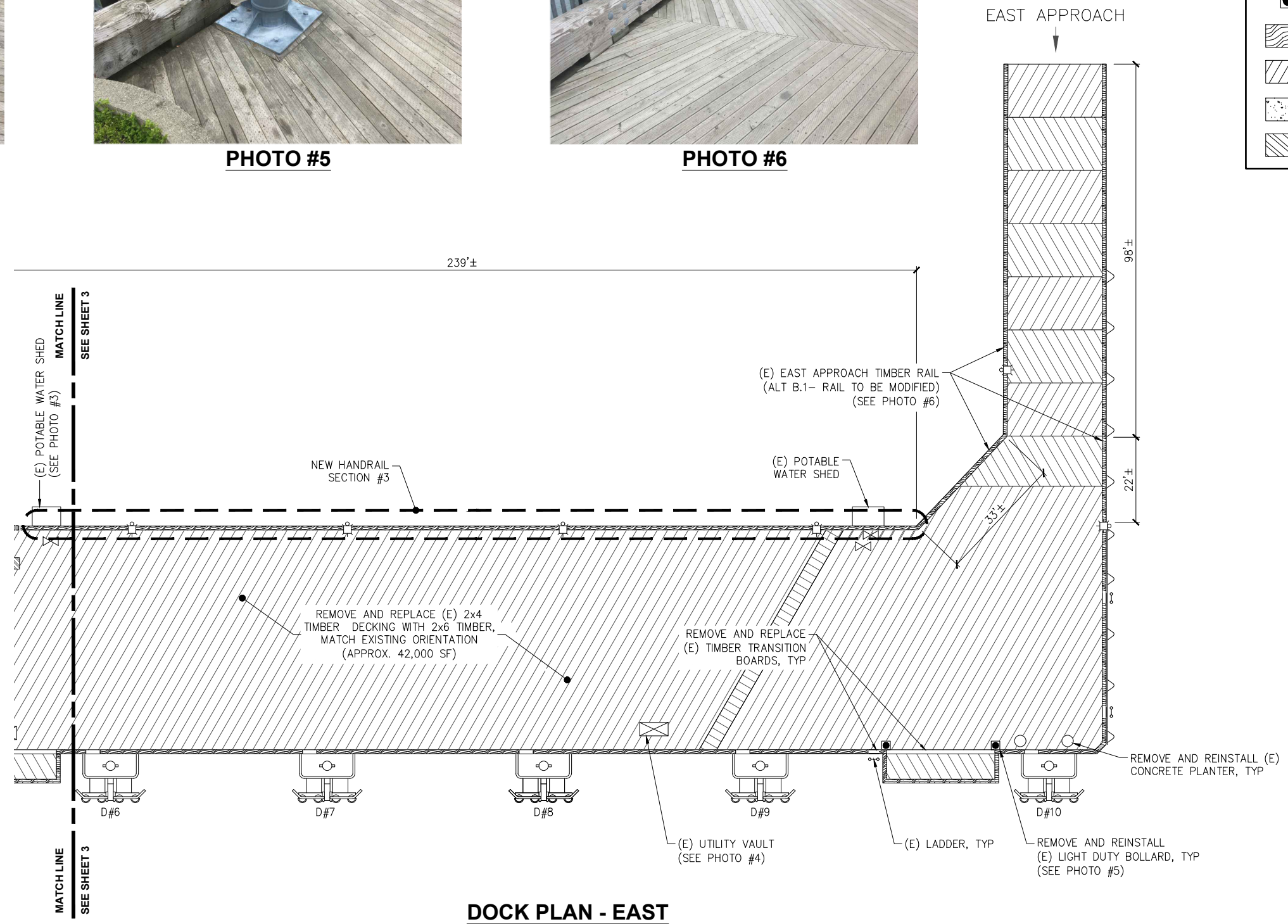


PHOTO #6

SHEET LEGEND	
	LIGHT POLE
	WATER SHUTOFF VALVE
	LIGHT DUTY BOLLARD
	TIMBER BULL RAIL
	DECKING ORIENTATION
	CONCRETE SURFACING
	STEEL

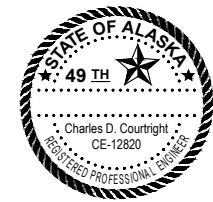


DOCK PLAN - EAST



ISSUED FOR BID
12/06/19

PND Engineers, Inc. (PND) is not responsible for safety programs, methods or procedures of operation, or the construction of the design shown on these drawings. Where specifications are general or not called out, the specifications shall conform to standards of industry. Drawings are for use on this project only and are not intended for reuse without written approval from PND. Drawings are also not to be used in any manner that would constitute a detriment directly or indirectly to PND.



1506 West 36th Avenue
Anchorage, Alaska 99503
Phone: 907.561.1011
Fax: 907.563.4220
www.pndengineers.com



PROJECT: **CITY OF VALDEZ
KELSEY DOCK DECKING REPLACEMENT**

TITLE: **DOCK PLAN - EAST**

DESIGNED BY: MAB/BJ	DATE: 12/06/2019	SHEET NO: 4
CHECKED BY: CC	PND PROJECT NO: 191113	OF 9

REV	DATE	DESCRIPTION

DATE: 12/06/19



PHOTO #7 - WORN DECK WITH EXPOSED PLATE

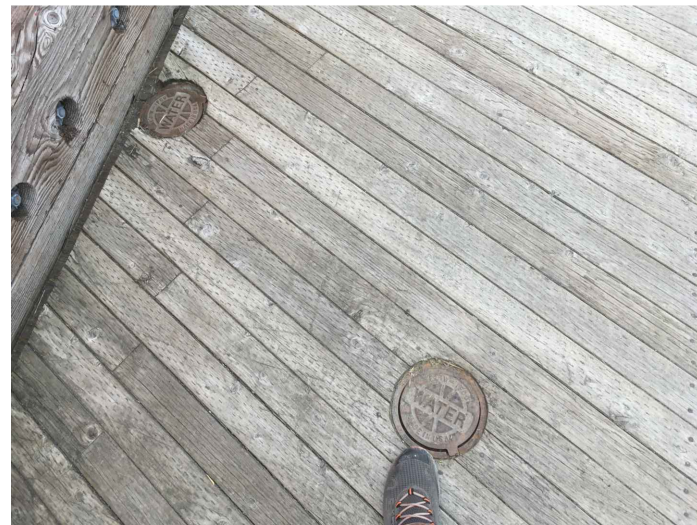


PHOTO #8 - TYPICAL VALVE COVER

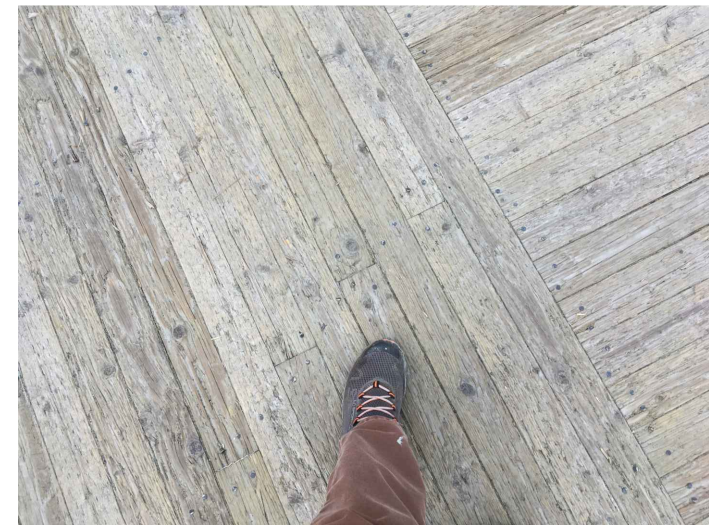
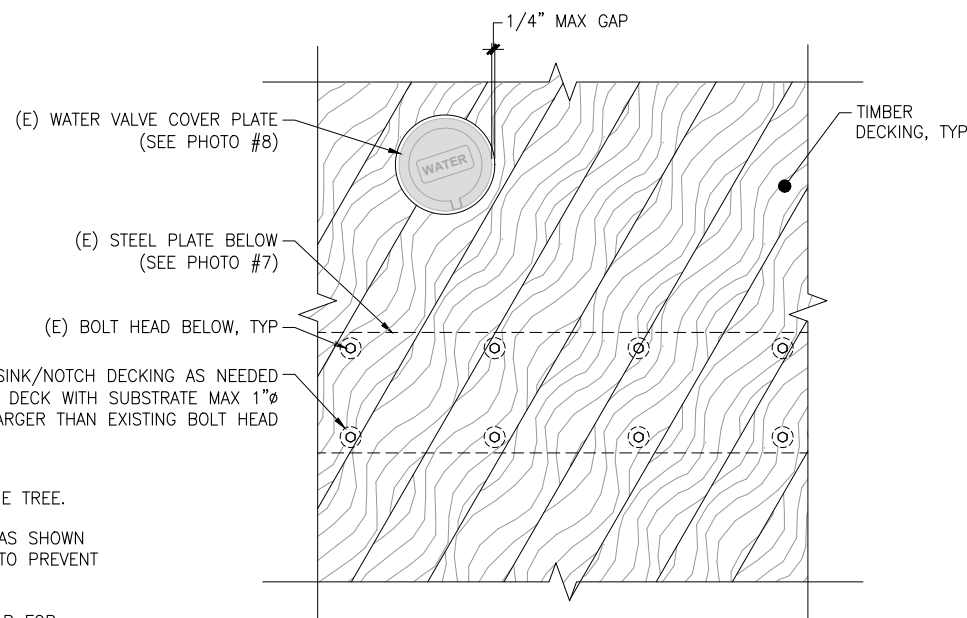


PHOTO #9 - TYPICAL DECKING LAYOUT



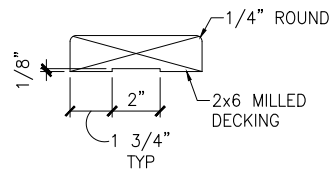
TYPICAL PLANK MODIFICATIONS



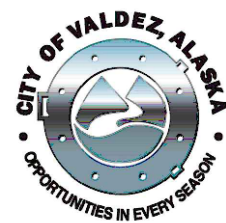
TYPICAL DECKING LAYOUT

NOTES:

- MILLED SIDE SHALL BE TOWARDS THE CENTER OF THE TREE.
- SECURE WITH 16d NAILS FLUSH AT EACH LOCATION AS SHOWN UNLESS OTHERWISE APPROVED. PREDRILL AS REQ'D TO PREVENT SPLITTING.
- DECK BOARDS SHALL BE SPACED WITH 1/8" MAX GAP FOR DRY/SEASONED LUMBER, BUTT FLUSH IF WET/UNSEASONED.
- 2x6 SHOWN, WIDER TRANSITION BOARDS SHALL INCREASE MILL WIDTH RESPECTIVELY WITH 1-3/4" EDGE TO REMAIN FIXED LENGTH.



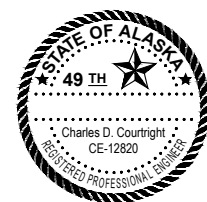
TIMBER DECKING DETAIL



ISSUED FOR BID
12/06/19

PND Engineers, Inc. (PND) is not responsible for safety programs, methods or procedures of operation, or the construction of the design shown on these drawings. Where specifications are general or not called out, the specifications shall conform to standards of industry. Drawings are for use on this project only and are not intended for reuse without written approval from PND. Drawings are also not to be used in any manner that would constitute a detriment directly or indirectly to PND.

REV	DATE	DESCRIPTION



DATE: 12/06/19

1506 West 36th Avenue
Anchorage, Alaska 99503
Phone: 907.561.1011
Fax: 907.563.4220
www.pndengineers.com



PROJECT: CITY OF VALDEZ KELSEY DOCK DECKING REPLACEMENT			
TITLE: DECKING DETAILS			
DESIGNED BY: MAB/BJ	DATE: 12/06/2019	SHEET NO: 5	OF 9
CHECKED BY: CC	PND PROJECT NO: 191113		



PHOTO #10 - TYPICAL LADDER TRANSITION



PHOTO #11 - TYPICAL FENDER STEP TRANSITION

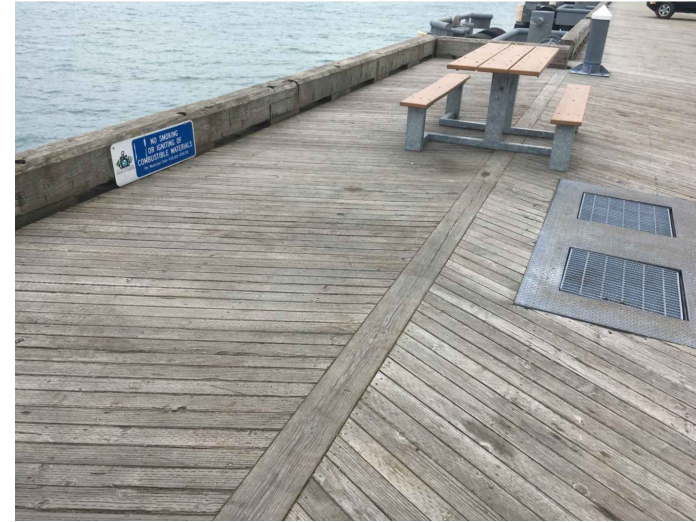
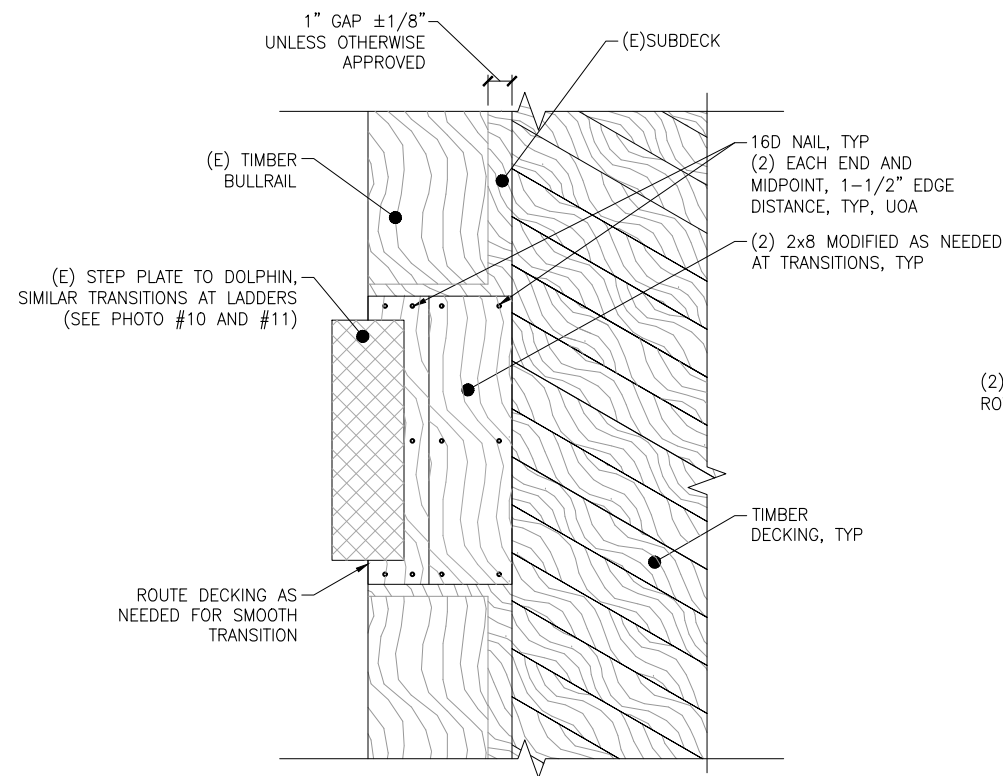


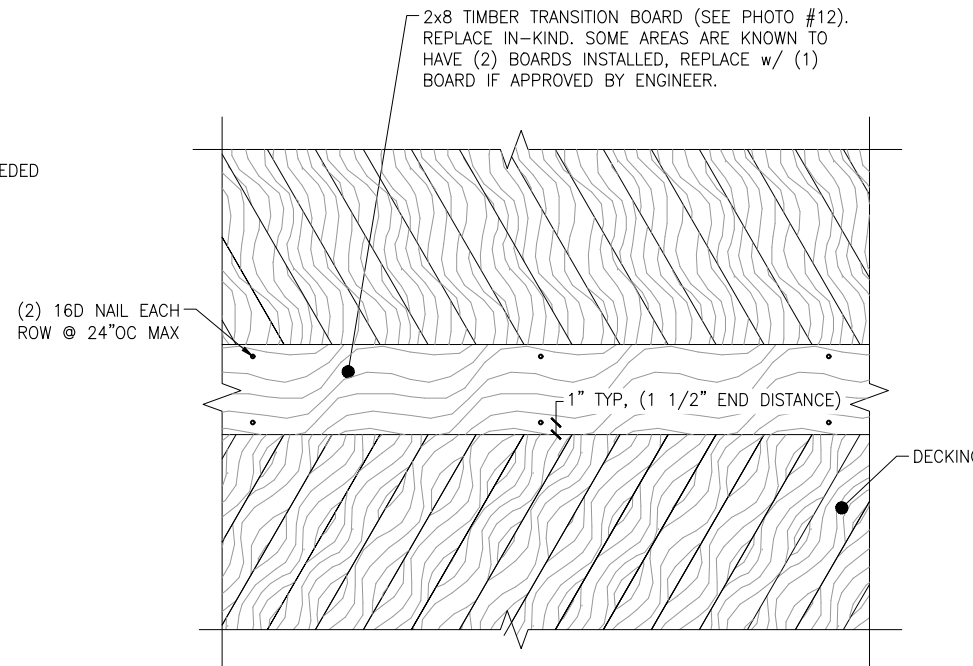
PHOTO #12 - TYPICAL PLATFORM TRANSITION



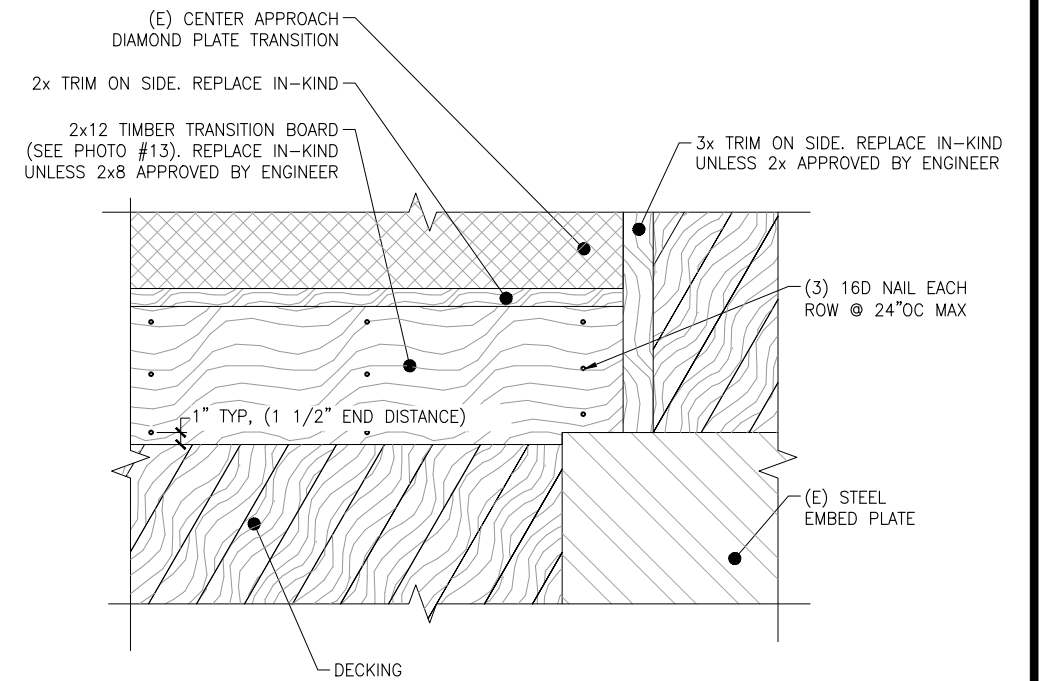
PHOTO #13 - CENTER APPROACH TRANSITION



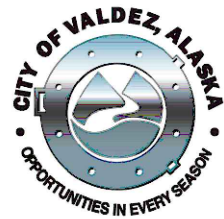
TYPICAL EDGE TRANSITION DETAIL



TRANSITION @ EXTERIOR PLATFORM



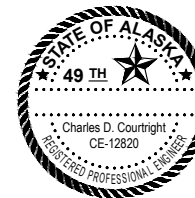
CENTER APPROACH TRANSITION DETAIL



ISSUED FOR BID
12/06/19

PND Engineers, Inc. (PND) is not responsible for safety programs, methods or procedures of operation, or the construction of the design shown on these drawings. Where specifications are general or not called out, the specifications shall conform to standards of industry. Drawings are for use on this project only and are not intended for reuse without written approval from PND. Drawings are also not to be used in any manner that would constitute a detriment directly or indirectly to PND.

REV	DATE	DESCRIPTION



DATE: 12/06/19

1506 West 36th Avenue
Anchorage, Alaska 99503
Phone: 907.561.1011
Fax: 907.563.4220
www.pndengineers.com



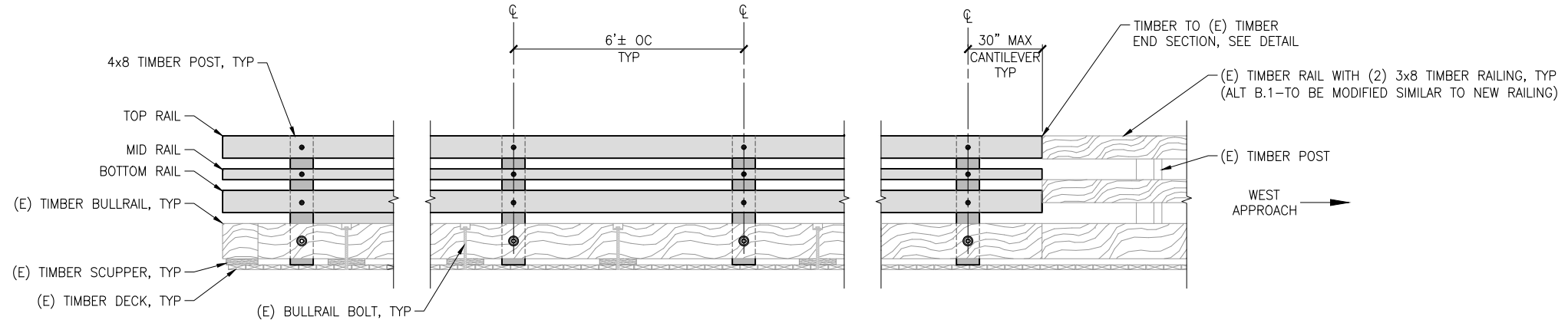
PROJECT: CITY OF VALDEZ
KELSEY DOCK DECKING REPLACEMENT

TITLE: TRANSITION DETAILS

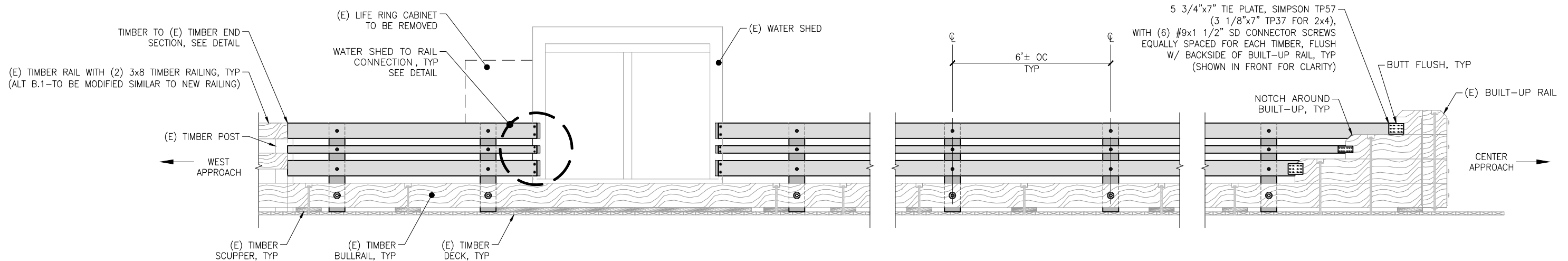
DESIGNED BY: MAB/BJ	DATE: 12/06/2019	SHEET NO: 6
CHECKED BY: CC	PND PROJECT NO: 191113	OF 9

NOTES:

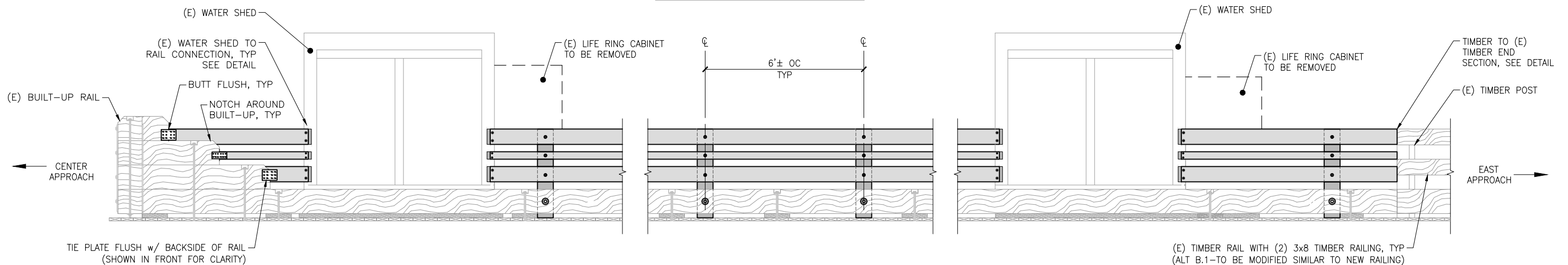
1. RAIL POST BELOW DECK NOT SHOWN FOR CLARITY.
2. POST SHALL BE LAID OUT TO AVOID OBSTRUCTIONS, MINIMIZE RAIL SPLICES, AND APPEAR UNIFORMLY SPACED AS PRACTICAL.
3. LAYOUT SHALL BE COORDINATED AND APPROVED BY ENGINEER PRIOR TO INSTALLATION. POST LOCATION MAY BE ADJUSTED W/ ENGINEER APPROVAL.
4. LIFE RINGS TO BE REMOVED AND REINSTALLED ON NEW RAIL PER OWNER GUIDANCE.



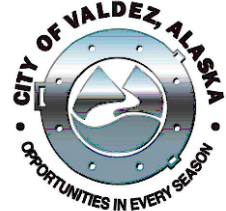
HANDRAIL SECTION #1 LAYOUT



HANDRAIL SECTION #2 LAYOUT



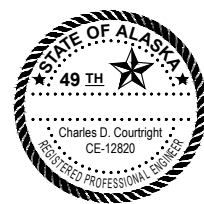
HANDRAIL SECTION #3 LAYOUT



ISSUED FOR BID
12/06/19

PND Engineers, Inc. (PND) is not responsible for safety programs, methods or procedures of operation, or the construction of the design shown on these drawings. Where specifications are general or not called out, the specifications shall conform to standards of industry. Drawings are for use on this project only and are not intended for reuse without written approval from PND. Drawings are also not to be used in any manner that would constitute a detriment directly or indirectly to PND.

REV	DATE	DESCRIPTION

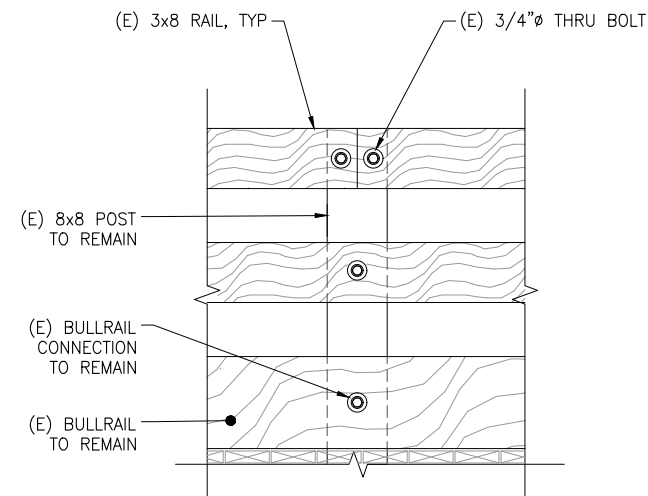


DATE: 12/06/19

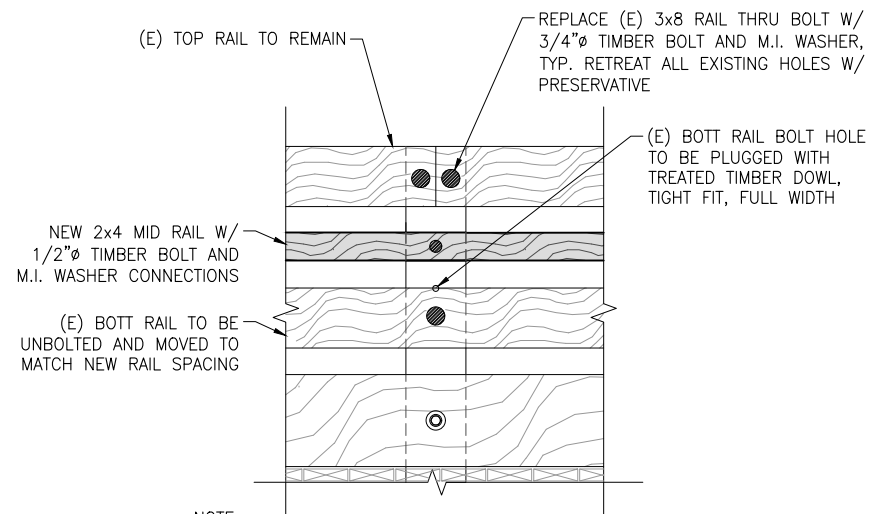
1506 West 36th Avenue
Anchorage, Alaska 99503
Phone: 907.561.1011
Fax: 907.563.4220
www.pndengineers.com



PROJECT: CITY OF VALDEZ KELSEY DOCK DECKING REPLACEMENT			
TITLE: HANDRAIL LAYOUT			
DESIGNED BY: MAB/BJ	DATE: 12/06/2019	SHEET NO: 7	OF 9
CHECKED BY: CC	PND PROJECT NO: 191113		

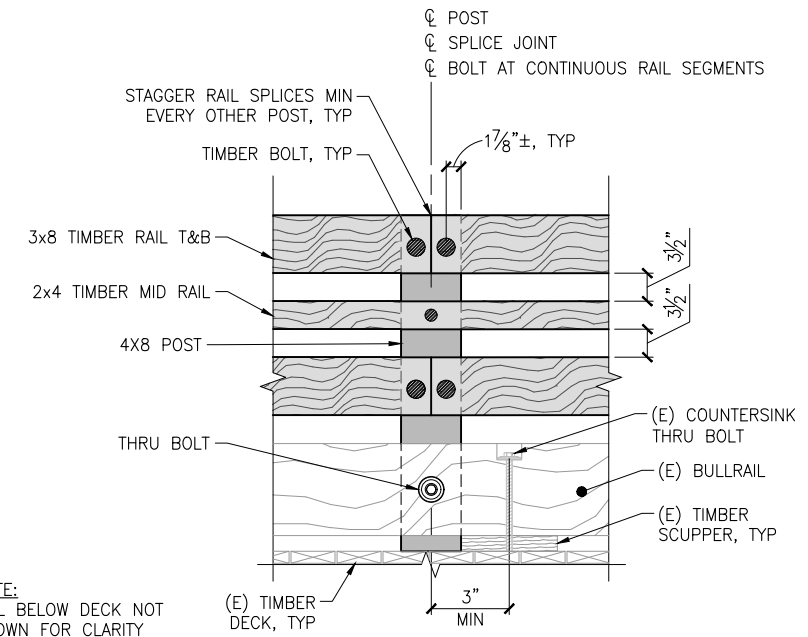


EXISTING EAST/WEST APPROACH RAIL



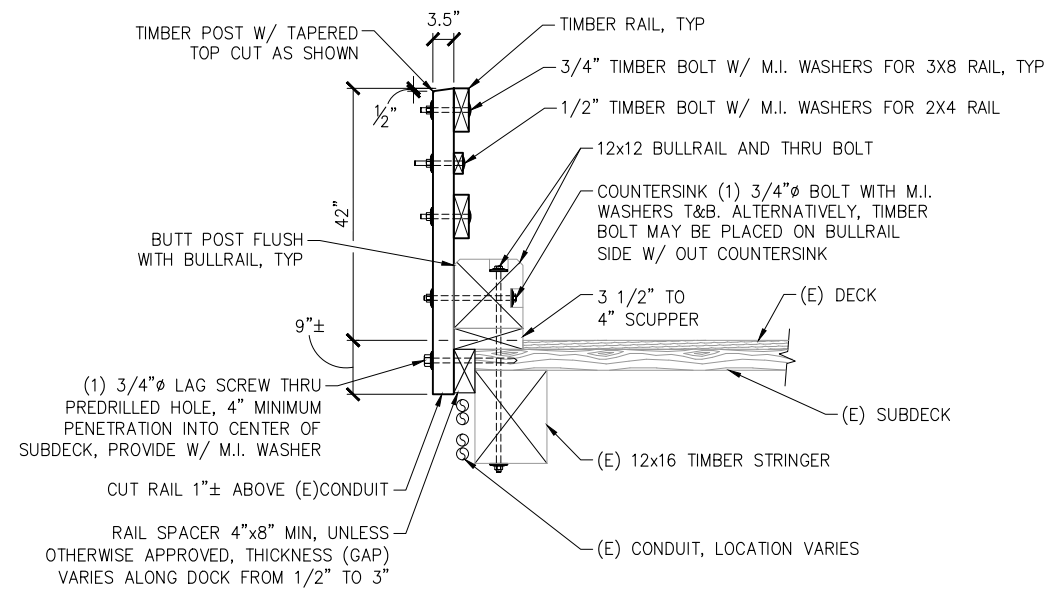
MODIFIED EAST/WEST APPROACH RAIL (ALT B.1)

NOTE:
SEE NEW TIMBER RAIL FOR DETAILS NOT SHOWN

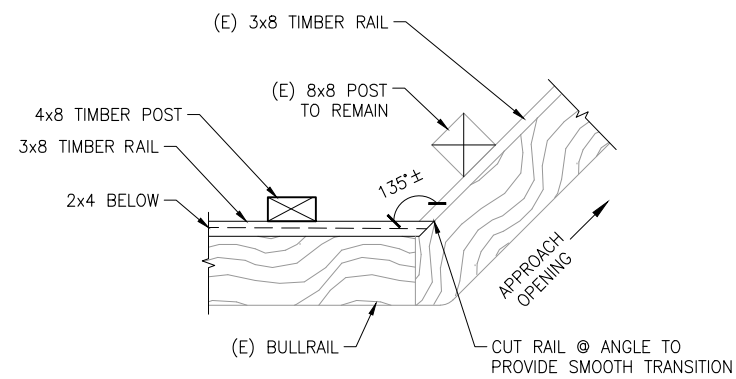


NOTE:
RAIL BELOW DECK NOT SHOWN FOR CLARITY

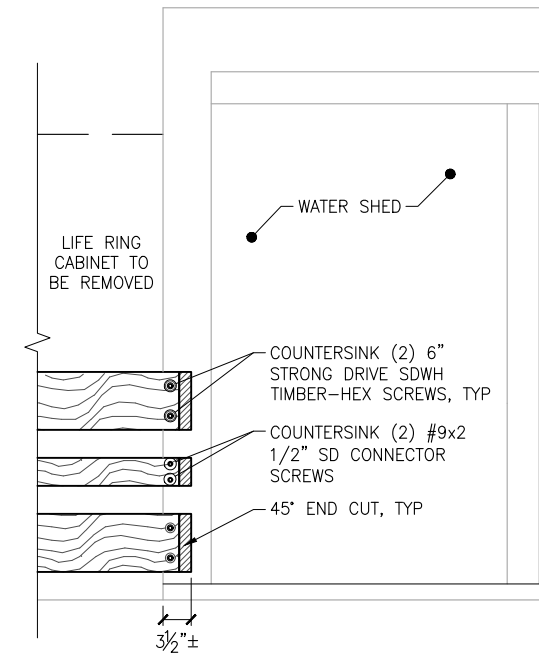
NEW TIMBER RAIL



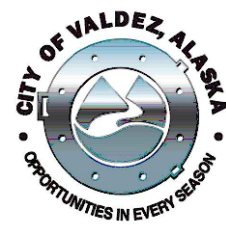
HANDRAIL ATTACHMENT - TYPICAL



RAIL TO APPROACH RAIL END DETAIL



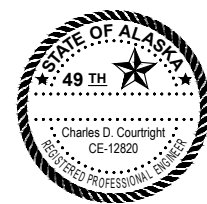
WATER SHED TO RAIL CONNECTION DETAIL



ISSUED FOR BID
12/06/19

PND Engineers, Inc. (PND) is not responsible for safety programs, methods or procedures of operation, or the construction of the design shown on these drawings. Where specifications are general or not called out, the specifications shall conform to standards of industry. Drawings are for use on this project only and are not intended for reuse without written approval from PND. Drawings are also not to be used in any manner that would constitute a detriment directly or indirectly to PND.

REV	DATE	DESCRIPTION



DATE: 12/06/19

1506 West 36th Avenue
Anchorage, Alaska 99503
Phone: 907.561.1011
Fax: 907.563.4220
www.pndengineers.com



PROJECT: CITY OF VALDEZ
KELSEY DOCK DECKING REPLACEMENT

TITLE: HANDRAIL DETAILS

DESIGNED BY: MAB/BJ DATE: 12/06/2019 SHEET NO: 8 OF 9
CHECKED BY: CC PND PROJECT NO: 191113

GENERAL NOTES:

OWNER: CITY OF VALDEZ

ENGINEER: PND ENGINEERS, INC.

NOTICE TO CONTRACTOR:

THE DESIGN DRAWINGS AND SPECIFICATIONS SHALL BE POSTED PROMINENTLY AT THE CONTRACTOR'S ONSITE PROJECT OFFICE. ANY DISCREPANCIES FOUND AMONG THE DRAWINGS, SPECIFICATIONS, SITE CONDITIONS, AND THESE GENERAL NOTES SHALL BE REPORTED TO THE OWNER/ENGINEER AT ONCE. ANY FURTHER WORK PERFORMED BY THE CONTRACTOR AFTER FINDING SUCH DISCREPANCIES SHALL BE DONE AT THEIR OWN RISK.

THE CONTRACTOR IS ADVISED TO INSPECT THE SITE TO DETERMINE SCOPE OF WORK AND ACCESSIBILITY PRIOR TO BIDDING.

DESCRIPTION OF WORK

THE WORK INCLUDES DEMOLITION AND REPLACEMENT OF EXISTING TIMBER DECKING AND INSTALLATION OF NEW HANDRAILS. ALL LABOR, ACCESS, MATERIALS, FABRICATION, TRANSPORTATION AND EQUIPMENT NECESSARY TO COMPLETE WORK SHALL BE FURNISHED BY THE CONTRACTOR.

ANY DAMAGE CAUSED BY THE CONTRACTOR OR SUBCONTRACTORS TO THE EXISTING STRUCTURE (OUTSIDE OF THE DETAILED SCOPE OF WORK) OR ADJOINING PROPERTY SHALL BE REPAIRED IMMEDIATELY AT THE EXPENSE OF THE CONTRACTOR.

ALL WORK SHALL BE DONE IN ACCORDANCE WITH THE PLANS, SPECIFICATIONS, AND PERMITS.

APPLICABLE CODES AND STANDARDS

ALL LOCAL CODES PLUS THE FOLLOWING SPECIFICATIONS, STANDARDS AND CODES ARE PART OF THESE GENERAL NOTES:

1. CVSS, CURRENT EDITION w/ PROJECT SPECIFIC MODIFICATIONS AND ADDITIONS
2. ASTM SPECIFICATIONS, CURRENT EDITION
3. IBC, CURRENT EDITION

IN THE EVENT THAT THERE IS A CONFLICT BETWEEN THE ABOVE REFERENCES AND THESE GENERAL NOTES THE FOLLOWING PRIORITY WILL BE FOLLOWED:

1. ALL PROJECT PERMIT REQUIREMENTS
2. THESE GENERAL NOTES AND PLANS
3. LOCAL CODES
4. THE SPECIFICATIONS, STANDARDS AND CODES LISTED ABOVE IN ORDER OF PRECEDENCE

VERTICAL DATUM

VERTICAL DATUM IS MEAN LOWER LOW WATER (MLLW).

TIDAL DATUMS

NOAA TIDAL DATUMS FOR 1983-2001 EPOCH AT VALDEZ, PRINCE WILLIAM SOUND (STATION #9454240):

EST. EXTREME HIGH WATER (EHW)	EL. +17.1 FT
MEAN HIGHER HIGH WATER (MHHW)	EL. +12.2
MEAN HIGH WATER (MHW)	EL. +11.2
MEAN SEA LEVEL (MSL)	EL. +6.5
MEAN TIDE LEVEL (MTL)	EL. +6.4
MEAN LOW WATER (MLW)	EL. +1.5
MEAN LOWER LOW WATER (MLLW)	EL. +0.0
EST. EXTREME LOW WATER (ELW)	EL. -5.4

PERFORMANCE CRITERIA

THE SCOPE OF WORK IDENTIFIED WITHIN THE PLANS IS INTENDED TO RESTORE THE DECK WEAR SURFACE TO THE ORIGINALLY DESIGNED SERVICEABILITY. REPAIRS ARE NOT INTENDED TO STRENGTHEN OR IMPROVE THE FUNCTIONALITY OF THE COMPONENTS BUT REPLACE IN-KIND. REPAIRS ARE PROPOSED TO RESTORE SERVICE LIFE TO THE WEAR SURFACE AND MITIGATE FUTURE DETERIORATION OF SUBGRADE COMPONENTS.

HANDRAIL INSTALLATION SCOPE OF WORK IDENTIFIED WITHIN THE PLANS ARE INTENDED TO IMPROVE PUBLIC SAFETY IN AND AROUND THE DOCK ACCESS AREAS. HANDRAILS ARE INTENDED TO BE INCORPORATED INTO EXISTING STRUCTURAL COMPONENTS WITH LIMITED RETROFITTING OR MODIFICATION TO EXISTING COMPONENTS.

SUBMITTAL REQUIREMENTS

CERTIFICATIONS, MANUFACTURER'S DATA, AND OTHER INFORMATION FOR ALL MATERIALS, INCLUDING THOSE NOT SPECIFICALLY NOTED IN THE GENERAL NOTES OR SHOWN ON INDIVIDUAL DRAWINGS, SHALL BE SUBMITTED TO THE ENGINEER FOR WRITTEN APPROVAL. ALL METHODS AND MATERIALS SHALL CONFORM TO THE CONTRACT DOCUMENTS, GENERAL NOTES, THE PLANS, GOOD WORKMANSHIP, GENERALLY ACCEPTED INDUSTRY STANDARDS, AND MANUFACTURER'S RECOMMENDATIONS.

ELECTRONIC SUBMITTALS ARE PREFERRED. FOR HARD COPY SUBMITTALS, A MINIMUM OF THREE (3) SETS SHALL BE PROVIDED WITH EACH SUBMITTAL. REVIEWED COPIES WILL BE RETURNED TO THE CONTRACTOR AND MARKED AS REQUIRED FOR ACCEPTANCE OR NON-ACCEPTANCE. THE ENGINEER'S REVIEW OF SUBMITTALS WILL BE FOR GENERAL CONFORMANCE ONLY, AND IT SHALL REMAIN THE RESPONSIBILITY OF THE CONTRACTOR TO PERFORM ALL REQUIREMENTS OF THE PLANS AND SPECIFICATIONS. ANY INTENDED DEVIATION FROM THE PLANS AND SPECIFICATIONS MUST BE SPECIFICALLY IDENTIFIED BY THE CONTRACTOR AND SPECIFICALLY APPROVED BY THE ENGINEER TO BE ACCEPTABLE. WORK PERFORMED BY THE CONTRACTOR PRIOR TO RECEIVING ENGINEER'S OR OWNER'S WRITTEN APPROVAL SHALL BE AT THE CONTRACTOR'S OWN RISK. ANY SUCH WORK REQUIRED BY THE ENGINEER OR OWNER TO BE REMOVED AND/OR REPLACED SHALL BE AT THE EXPENSE OF THE CONTRACTOR.

LIST OF SUBMITTALS

THE FOLLOWING IS A LIST OF REQUIRED SUBMITTALS FOR THIS PROJECT (ADDITIONAL SUBMITTALS MAY BE REQUIRED BY THE ENGINEER OR OWNER):

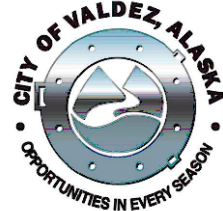
1. CONSTRUCTION SCHEDULE
2. TRAFFIC/PEDESTRIAN CONTROL PLAN
3. DEMOLITION AND REPAIR PLANS
4. TIMBER MATERIAL CERTIFICATIONS
5. PRESSURE TREATMENT/PRESERVE CERTIFICATIONS
6. ATTACHMENT HARDWARE MATERIALS & CERTIFICATIONS
7. GALVANIZING CERTIFICATIONS FOR STEEL COMPONENTS (INCLUDING HARDWARE)
8. RED-LINED AS-BUILT DRAWINGS

AS-BUILT PLANS

THE CONTRACTOR SHALL MAINTAIN A SET OF AS-BUILT PLANS IN THE ON-SITE PROJECT OFFICE. THE AS-BUILT PLANS SHALL BE KEPT UP TO DATE THROUGHOUT THE PROJECT WITH THE LATEST AS-BUILT DIMENSIONS AND DETAILS AS APPROVED BY THE ENGINEER AND SHALL BE SUBMITTED TO THE OWNER WITHIN 30 DAYS AFTER THE END OF THE PROJECT.

ABBREVIATIONS

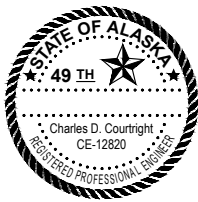
ACI – AMERICAN CONCRETE INSTITUTE
 AISC – AMERICAN INSTITUTE OF STEEL CONSTRUCTION
 ALT – ALTERNATE
 APPROX – APPROXIMATELY
 ASTM – AMERICAN SOCIETY OF TESTING AND MATERIALS
 AWS – AMERICAN WELDING SOCIETY
 BO – BOTTOM OF
 BTM – BOTTOM
 C – CHANNEL
 CVSS – CITY OF VALDEZ STANDARD SPECIFICATIONS AND STANDARD DETAILS
 CLR – CLEAR
 CL – CENTERLINE
 CONC – CONCRETE
 CONT – CONTINUOUS
 CY – CUBIC YARD
 EA – EACH
 EL/ELEV – ELEVATION
 EOP – END OF PROJECT
 EW – EACH WAY
 E/EXIST – EXISTING
 GALV – GALVANIZED
 HDG – HOT-DIP GALVANIZED
 HORZ – HORIZONTAL
 HSS – HOLLOW STRUCTURAL SECTION
 HTL – HIGH TIDE LINE
 ID – INSIDE DIAMETER
 K/KIP – ONE THOUSAND POUNDS
 L – STEEL ANGLE
 LB – POUND
 LF – LINEAR FEET
 MAX – MAXIMUM
 ME – MATCH EXISTING
 MHW – MEAN HIGH WATER
 M.I. – MALLEABLE IRON
 MIN – MINIMUM
 MLLW – MEAN LOWER LOW WATER
 NA – NOT APPLICABLE
 NO – NUMBER
 NTS – NOT TO SCALE
 OC – ON CENTER
 OD – OUTSIDE DIAMETER
 PL – PLATE
 PSF – POUNDS PER SQUARE FOOT
 PSI – POUNDS PER SQUARE INCH
 QTY – QUANTITY
 R – RADIUS
 REF – REFERENCE
 SS – STAINLESS STEEL
 SF – SQUARE FEET
 SHT – SHEET
 SIM – SIMILAR
 STA – STATION
 SYMM – SYMMETRIC
 t – THICKNESS
 T&B – TOP AND BOTTOM
 TBD – TO BE DETERMINED
 TO – TOP OF
 TYP – TYPICAL
 UNO – UNLESS NOTED OTHERWISE
 UOA – UNLESS OTHERWISE APPROVED
 VERT – VERTICAL
 VT – VISUAL INSPECTION
 W/ – WITH



ISSUED FOR BID
 12/06/19

PND Engineers, Inc. (PND) is not responsible for safety programs, methods or procedures of operation, or the construction of the design shown on these drawings. Where specifications are general or not called out, the specifications shall conform to standards of industry. Drawings are for use on this project only and are not intended for reuse without written approval from PND. Drawings are also not to be used in any manner that would constitute a detriment directly or indirectly to PND.

REV	DATE	DESCRIPTION



1506 West 36th Avenue
 Anchorage, Alaska 99503
 Phone: 907.561.1011
 Fax: 907.563.4220
 www.pndengineers.com



PROJECT: CITY OF VALDEZ
 KELSEY DOCK DECKING REPLACEMENT

TITLE: GENERAL NOTES

DESIGNED BY: MAB/BJ	DATE: 12/06/2019	SHEET NO: 9
CHECKED BY: CC	PND PROJECT NO: 191113	OF 9