

EAST PEAK

RESORT
VALDEZ, ALASKA



The Area

- **Well-positioned to incorporate a premier year-round attraction**
- **Unique setting combining modern and 1800's Klondike**
- **Accommodate upwards of 60K winter and 200K summer guests**



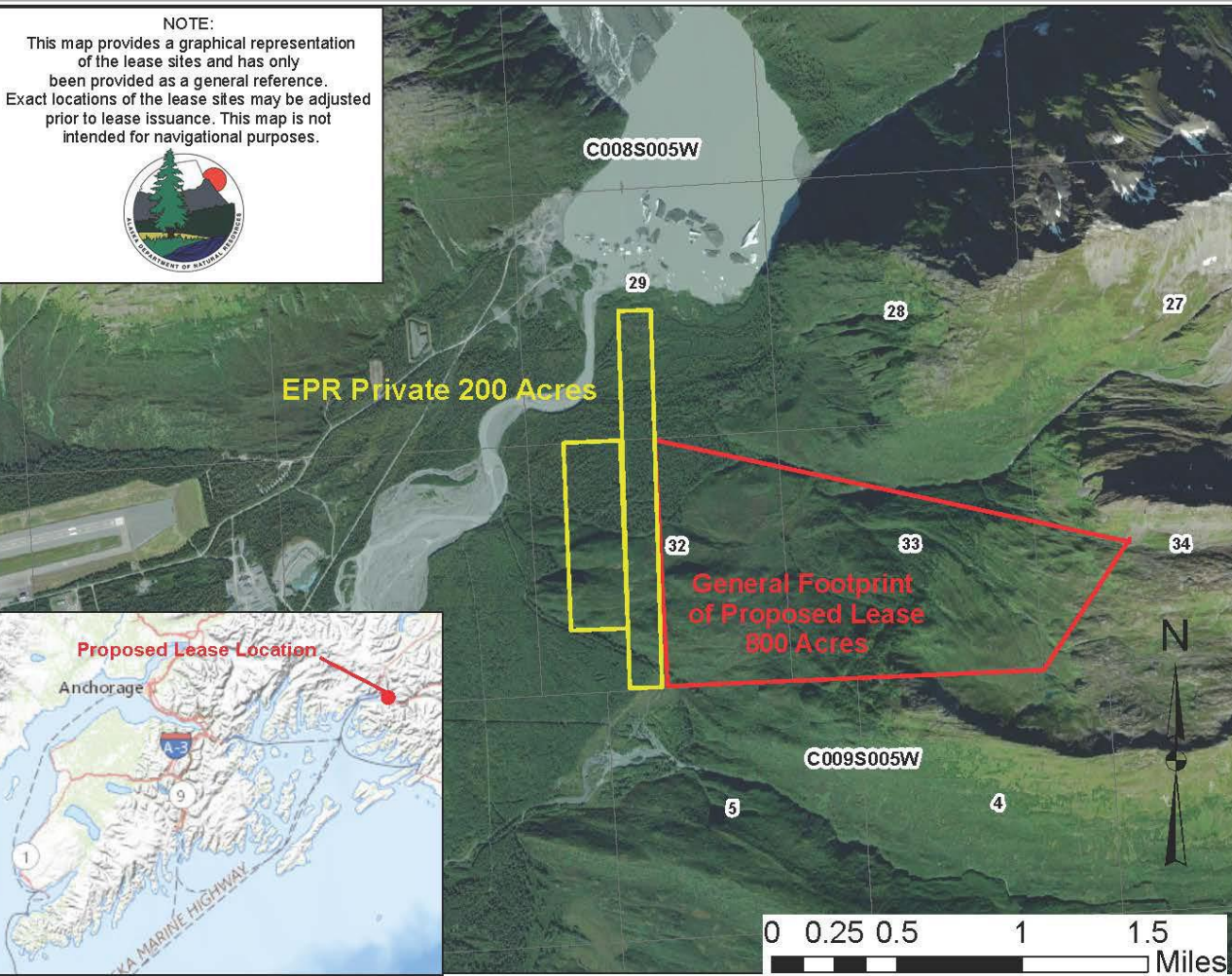
The View — Summer



The View — Winter



The Lease — Approx. 800 acres



- Application
 - July 2021
- PD & Comments
 - June 2023
- Final Decision
 - Coming Soon

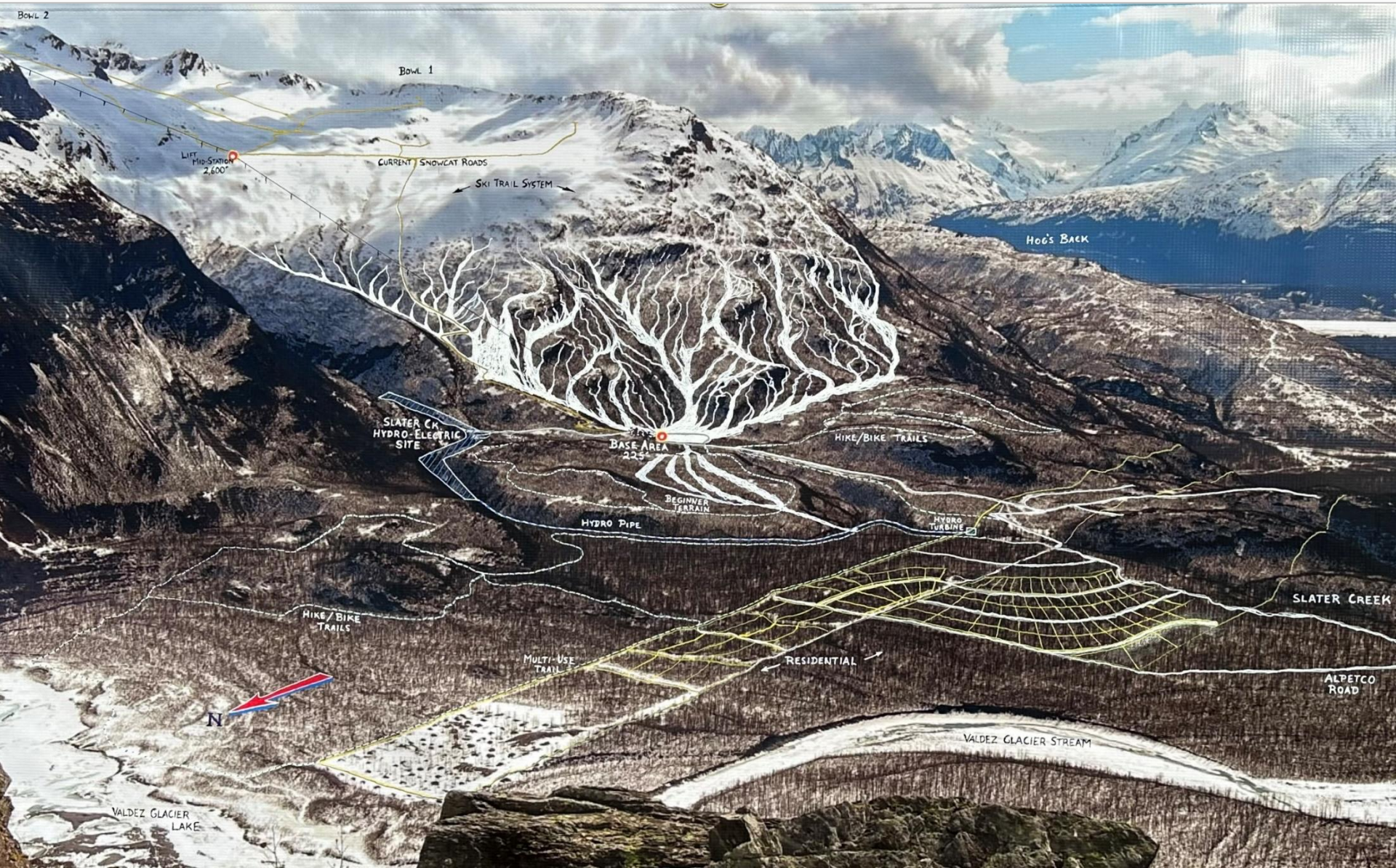
Roads · Trails · Mid-Mountain Warming Hut · Expansion

East Peak Resort

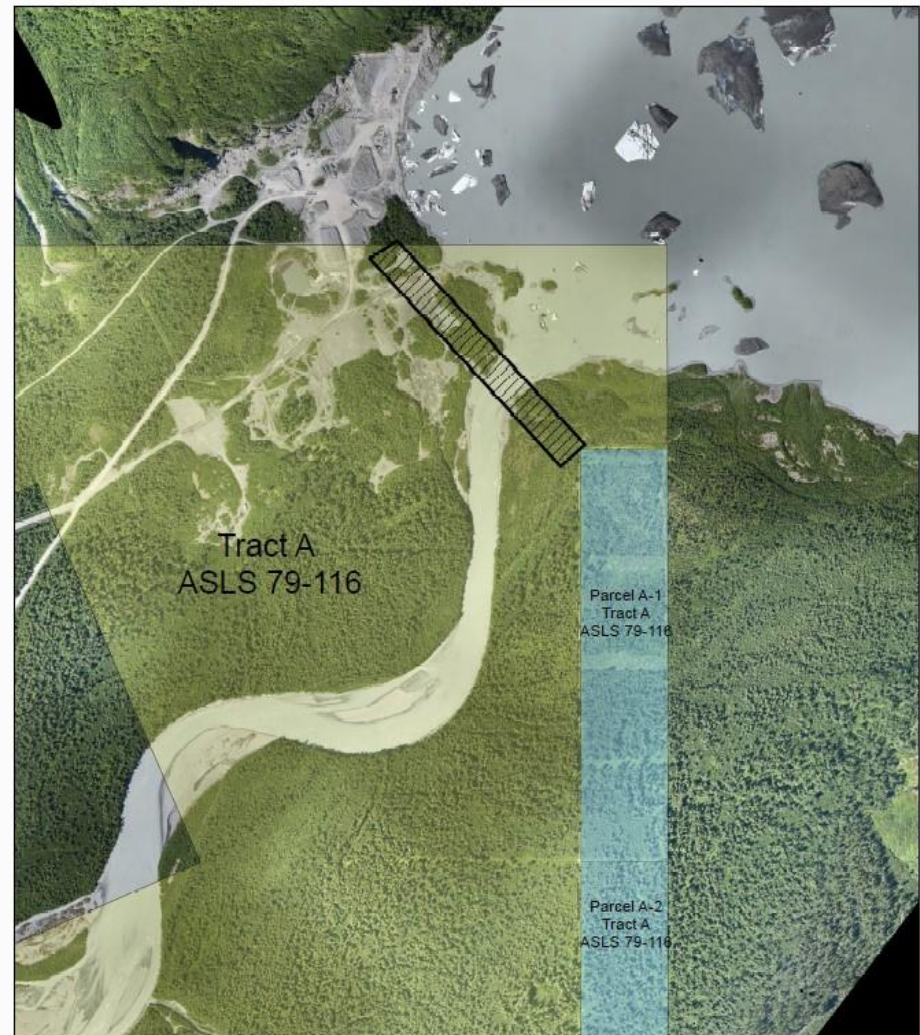
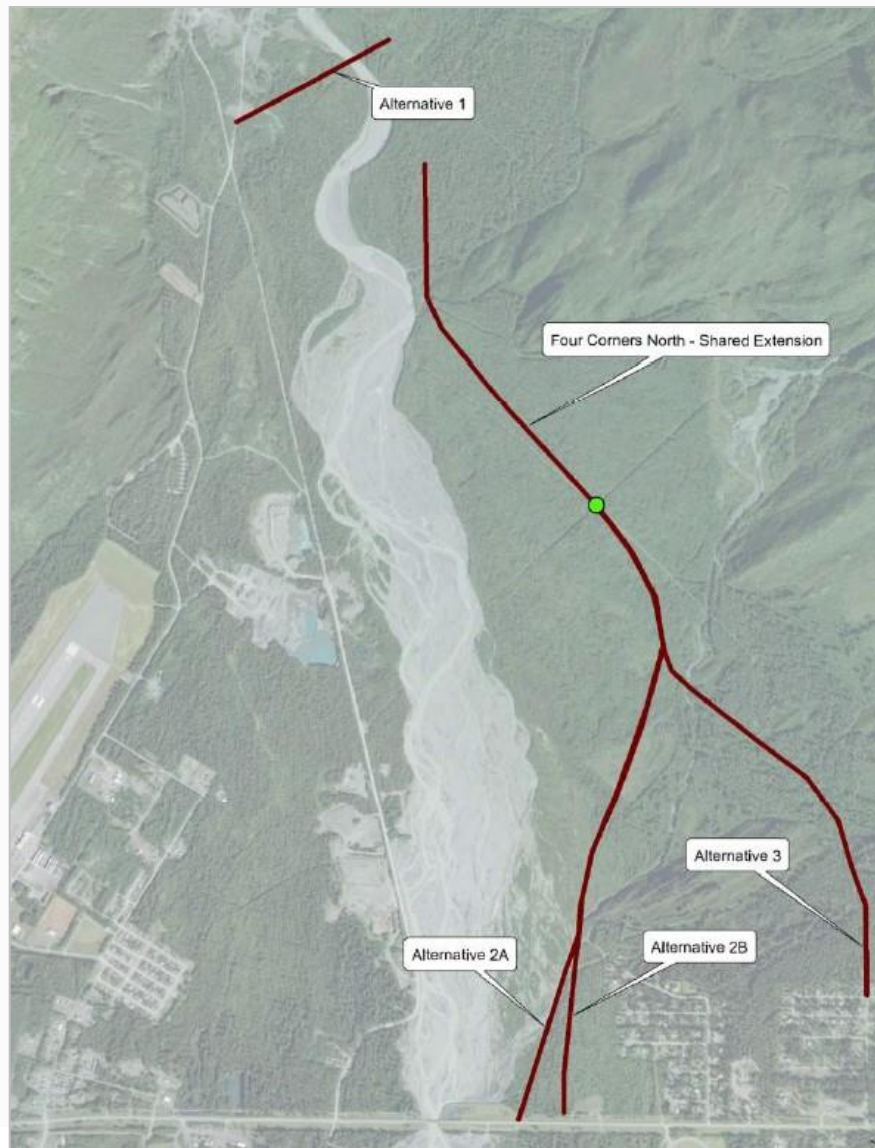
- Economic growth through recreational opportunities
- Meaningful, well-paid year-round tourism jobs
- Community and economic impact
- Diversity of revenue streams
- Market conditions & commitment



East Peak Resort — 2027




The Access



Concept Easement

 200ft Wide Easement

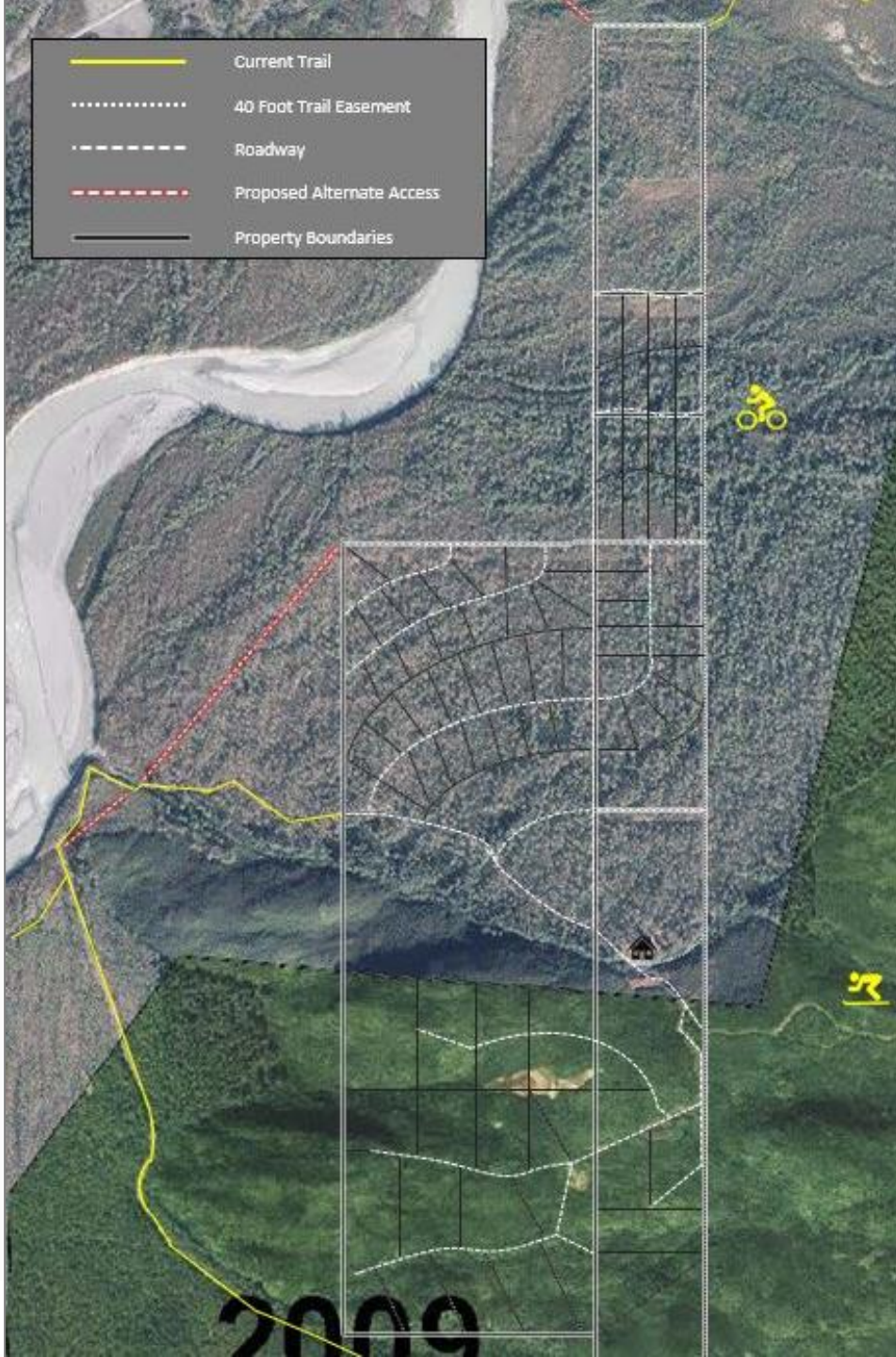
 City Owned Property

 Private Property



BASE MAP PROVIDED BY: COV ComDev Dept.
ALL FEATURES ASSOCIATED WITH THIS MAP
ARE SUBJECT TO THE COV DISCLAIMER FOR
ACCURACY AND USE. IMAGERY DATE: 2016
SCALE: 1 in = 682 ft

The Design



- Density
- Zoning
- Roads
- Trails

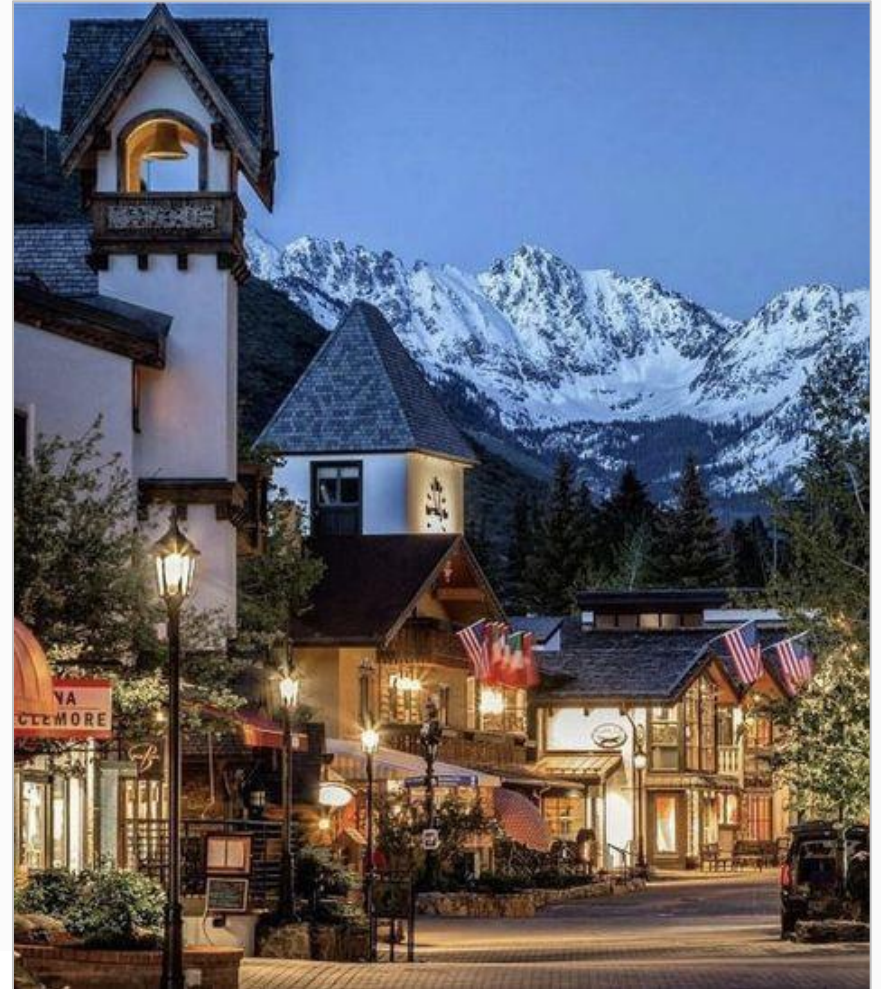
The Vision - Example



The Vision



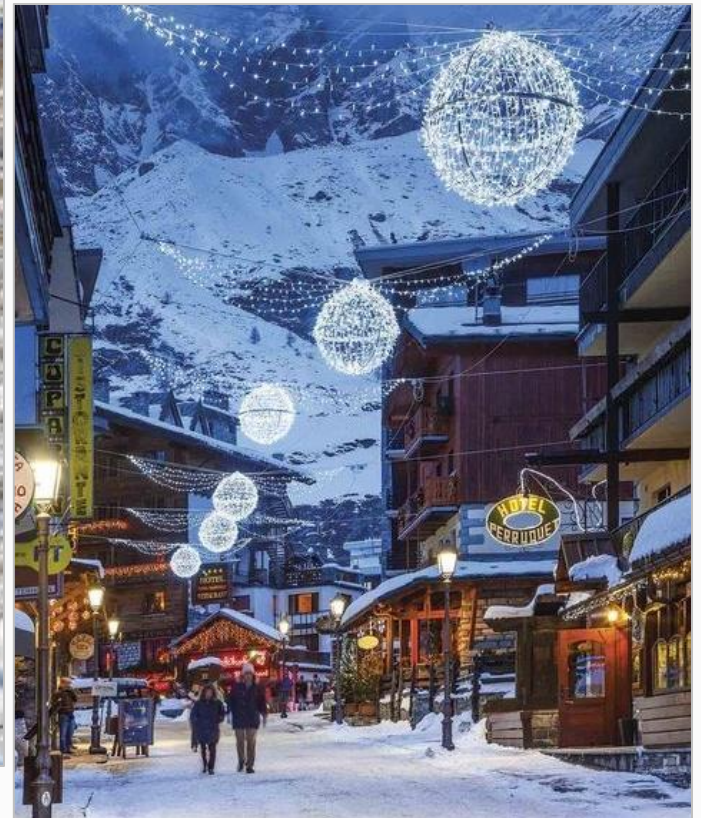
Base Village



The Vision cont...

Mid-Mountain

- Transformation
- Village / Activities



The Vision cont...



Residential

The Recreation



Mountain Biking



The Recreation cont...



Zip Line

Others

Cultural Activities

Wildlife Viewing

Exploration

Kayaking

Camping

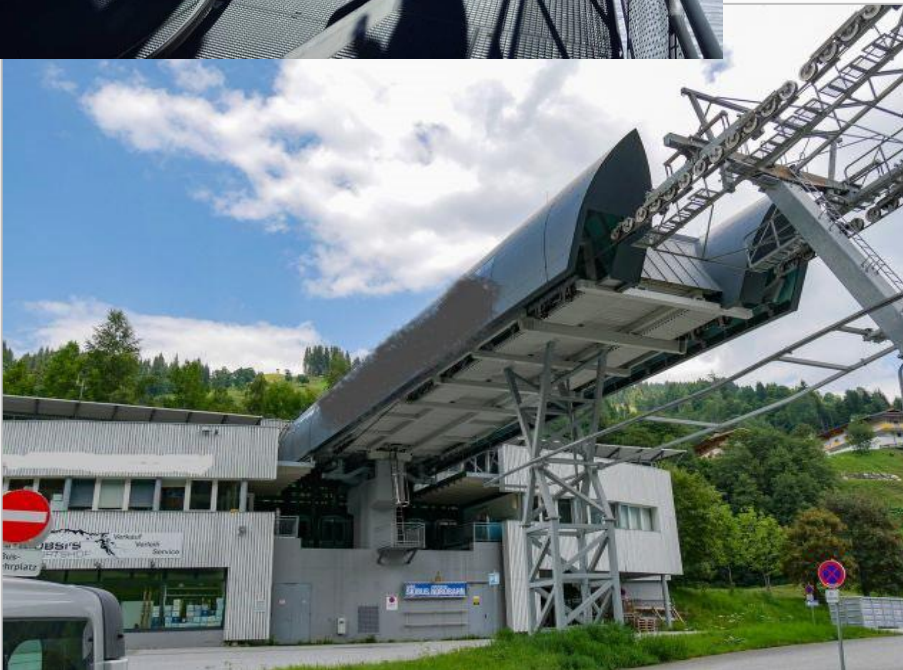
Aurora

ATV



The Lift - Gondola

- 12 Person
- 2200/hr Capacity



EAST PEAK

**RESORT
VALDEZ, ALASKA**



- **World renowned year-round tourist attraction**
- **Economic impacts**
- **Jobs creation and resident retention**