

CONSTRUCTION DOCUMENTS

VALDEZ CIVIC CENTER THEATRE LIGHTING UPGRADES

FOR THE

CITY OF VALDEZ

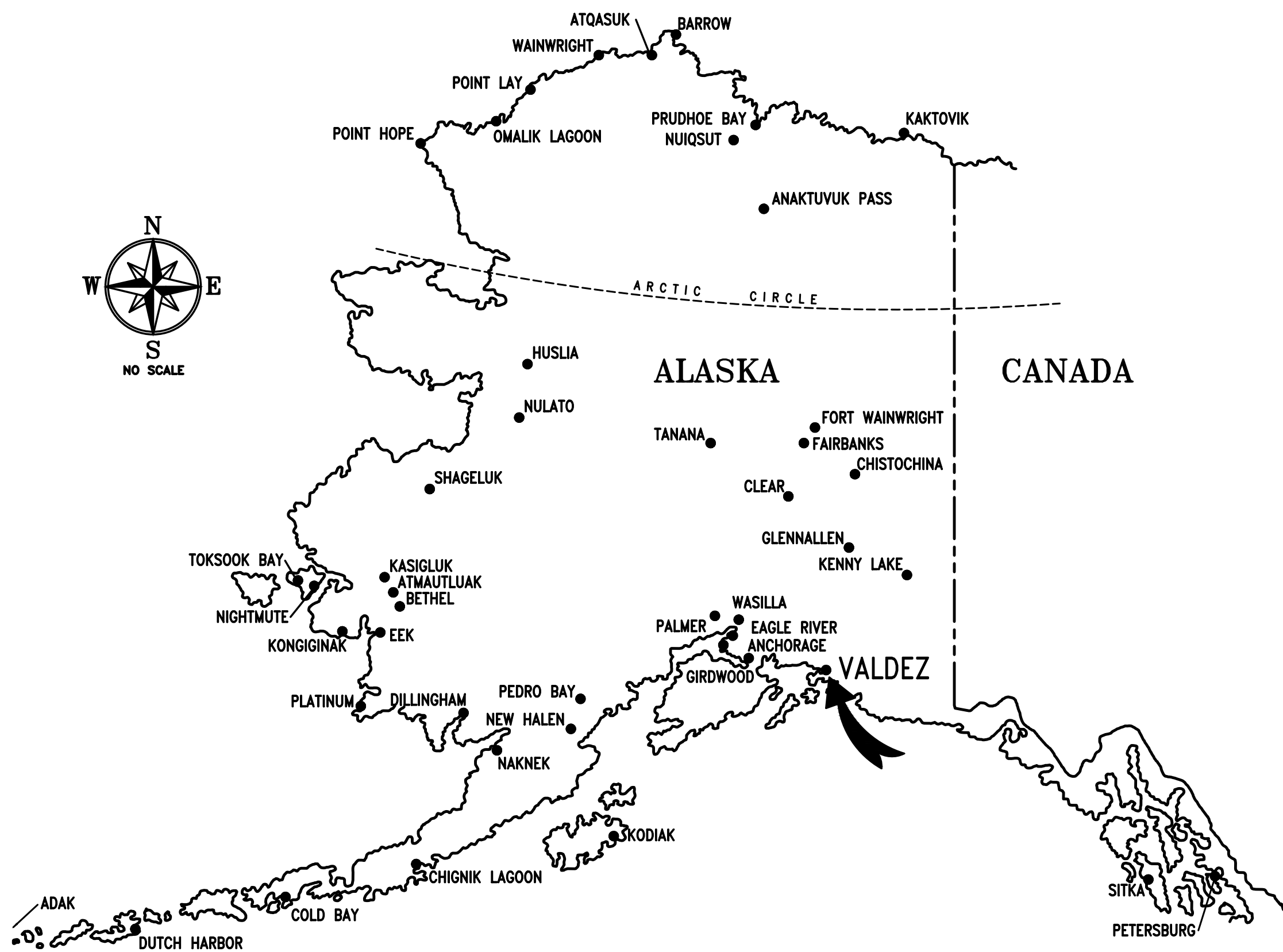
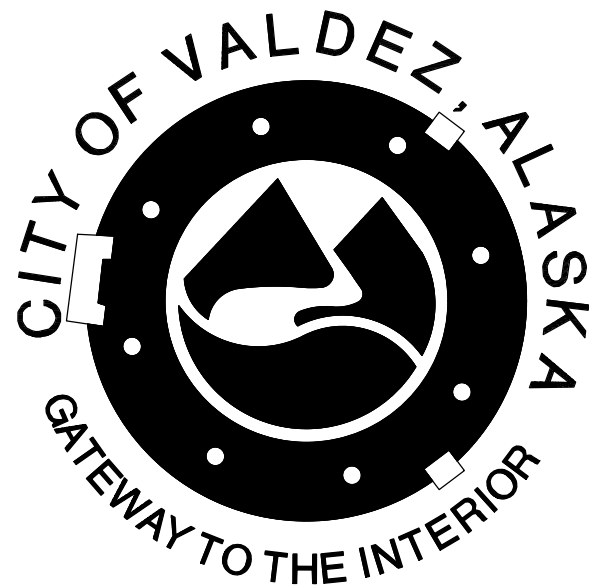
PREPARED BY:

RSA

Engineering, Inc.

MECHANICAL AND ELECTRICAL CONSULTING ENGINEERS

670 W. Fireweed Lane
Anchorage, AK 99503
Phone (907) 276-0521
Fax (907) 276-1751



VALDEZ, ALASKA

INDEX TO DRAWINGS:

ELECTRICAL

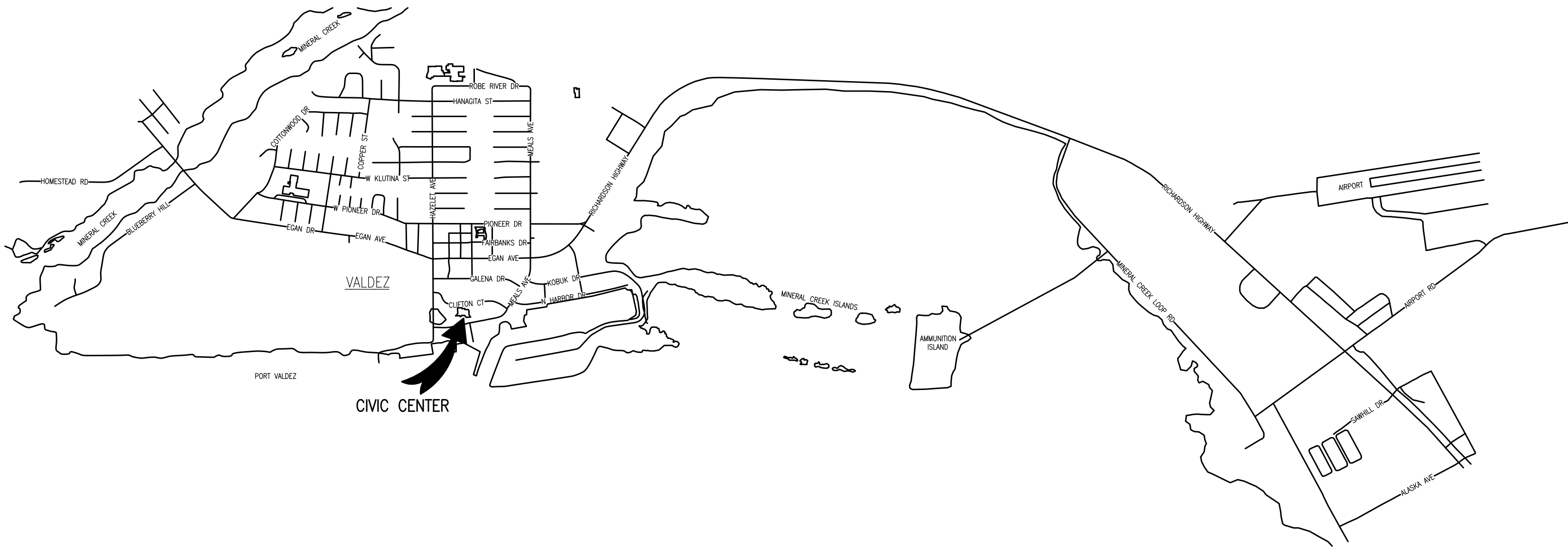
- E0.1 ELECTRICAL LEGEND, FIXTURE SCHEDULE, SPECIFICATIONS, AND DETAILS
- E1.1 ELECTRICAL DEMOLITION PLANS
- E2.1 ELECTRICAL REMODEL PLANS

INTERIOR DESIGN

- ID-1 THEATRE FLOOR FINISH PLAN
- ID-2 REFERENCE PHOTOS

SCOPE OF WORK

THIS PROJECT CONSISTS OF REPLACING THE STAIRWAY EGRESS LIGHTING, EMERGENCY EGRESS LIGHTING, AND THE CARPETING WITHIN THE CIVIC CENTER THEATRE.



LEGEND AND ACRONYMS

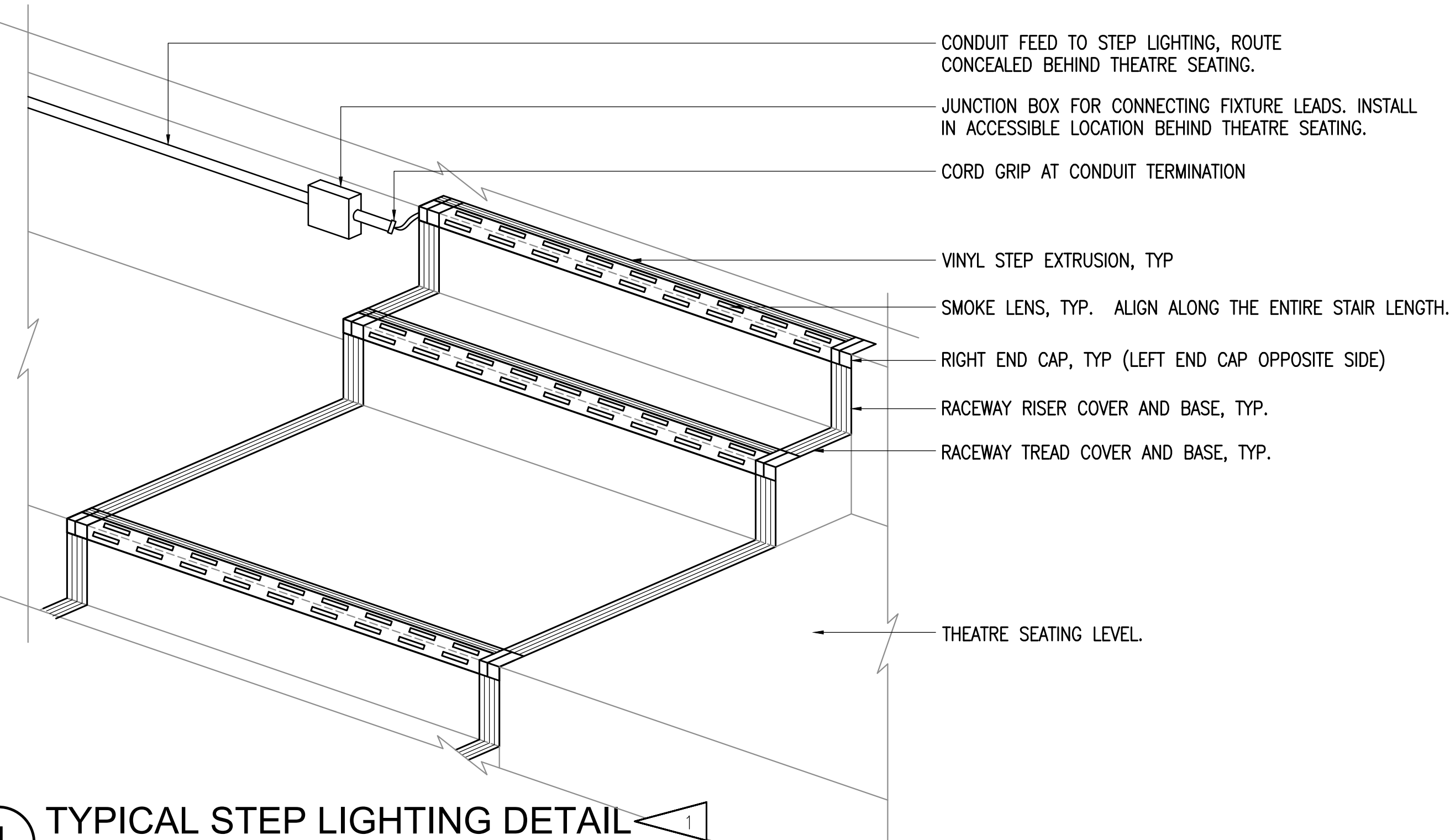
| | | | |
|--|---|-----|-------------------------------|
| | STEP LIGHTING | | NOTE TAG (No. INDICATES NOTE) |
| | EMERGENCY LIGHT | C | CONDUIT |
| | FIXTURE TAG (LETTER INDICATES TYPE) | E | DENOTES EXISTING ITEM |
| | 0-10V DIMMING SWITCH | EM | DENOTES EMERGENCY POWER |
| | SINGLE POLE SWITCH | K | KELVIN |
| | CONDUIT, CONCEALED | LED | LIGHT EMITTING DIODE |
| | HOMERUN TO PANEL (PANEL AND CIRCUIT No.) | LM | LUMENS |
| | SURFACE RACEWAY | NEC | NATIONAL ELECTRICAL CODE |
| | PANEL | NTS | NOT TO SCALE |
| | DEMOLITION ITEM (DASHED LINES INDICATE ITEMS TO BE DEMOLISHED, TYPICAL) | TYP | TYPICAL |

LIGHT FIXTURE SCHEDULE

| TYPE | LOCATION | MANUFACTURER AND CATALOG NUMBER (OR APPROVED EQUAL) | LUMINAIRE DESCRIPTION | MOUNTING | | LAMPS | BALLAST/DRIVER | TOTAL INPUT WATTS |
|--------|----------------|--|---|--------------|----------------|-----------|---------------------------|-------------------|
| | | | | TYPE | HEIGHT | | | |
| A | THEATRE STAIRS | CALIFORNIA ACCENT LIGHTING #STL6175-6"-10V-1%-3.0K-3.0K-SLC-5'7.5" | 5' 7.5"L STAIR NOSING STEP LIGHT WITH UPWARD AND FORWARD FACING LIGHT, LIGHT STRIPS SPACED 6" APART, SMOKE LENS, AND MATTE BLACK VINYL ORDER WITH LEFT AND RIGHT END CAPS, RACEWAY BASE AND COVERS (TREAD & RISER), POWER CONNECTORS, AND ADHESIVE TUBES FOR FIXTURE. PROVIDE 320VA 120VAC TO 24VDC 0-10V DIMMING DRIVERS AS SHOWN ON DRAWINGS. | SURFACE | STAIR NOSING | 3000K LED | 24VDC 0-10V DIMMING TO 1% | 12W |
| A1 | THEATRE STAIRS | CALIFORNIA ACCENT LIGHTING #STL6175-6"-10V-1%-3.0K-3.0K-SLC-3'3" | SAME AS FIXTURE TYPE 'A' EXCEPT WITH 3'3"L STEP LIGHTS AND PROVIDED WITH ADDITIONAL STEP EXTRUSION TO WALL ACCESSORY. | SURFACE | STAIR NOSING | 3000K LED | 24VDC 0-10V DIMMING TO 1% | 7W |
| XE | THEATRE | LITHONIA #ELM4L-B | EMERGENCY FIXTURE WITH DUAL-HEAD ADJUSTABLE OPTICS, BLACK HOUSING, AND NICAD BATTERY. | WALL MOUNTED | MATCH EXISTING | 640LM | 120V DRIVER | 7W |

SHEET NOTES:

1. EXACT LENGTH OF STEP LIGHT AND ALL STEP LIGHT ACCESSORIES TO BE VERIFIED BY CONTRACTOR PRIOR TO ORDERING.



1 TYPICAL STEP LIGHTING DETAIL
NO SCALE

ELECTRICAL SPECIFICATIONS

- 26.05.00 - COMMON WORK RESULTS FOR ELECTRICAL
- A. SCOPE OF WORK: FURNISH AND INSTALL ALL MATERIAL AND EQUIPMENT FOR AN EXTENSION TO THE EXISTING ELECTRICAL SYSTEM AS INDICATED ON THE DRAWINGS AND IN THESE SPECIFICATIONS.
- B. STANDARDS, CODES AND REGULATIONS: COMPLY WITH THE LATEST ADOPTED EDITION OF THE NATIONAL ELECTRICAL CODE, INTERNATIONAL BUILDING CODE, AND INTERNATIONAL FIRE CODE INCLUDING ALL STATE AND LOCAL AMENDMENTS TO THESE CODES. COMPLY WITH THE LATEST PUBLISHED VERSION OF THE NECA STANDARD OF INSTALLATION.
- C. DRAWINGS: THE DRAWINGS ARE DIAGRAMMATIC, NOT NECESSARILY SHOWING ALL OFFSETS OR EXACT LOCATIONS OF FIXTURES, EQUIPMENT, ETC. UNLESS SPECIFICALLY DIMENSIONED. BRING QUESTIONABLE OR OBSCURE ITEMS, APPARENT CONFLICTS BETWEEN PLANS AND SPECIFICATIONS, GOVERNING CODES OR UTILITIES REGULATIONS TO THE ATTENTION OF THE OWNER. CODES, ORDINANCES, REGULATIONS, MANUFACTURER'S INSTRUCTIONS OR STANDARDS TAKE PRECEDENCE WHEN THEY ARE MORE STRINGENT OR CONFLICT WITH THE DRAWINGS AND SPECIFICATIONS.
- D. RECORD DRAWINGS: MARK UP A CLEAN SET OF DRAWINGS AS THE WORK PROGRESSES TO SHOW THE DIMENSIONED LOCATION AND ROUTING OF ALL ELECTRICAL WORK WHICH WILL BECOME PERMANENTLY CONCEALED. SHOW COMPLETE ROUTING AND SIZING OF ANY SIGNIFICANT REVISIONS TO THE SYSTEMS SHOWN.
- E. WORKMANSHIP: INSTALLATION OF ALL WORK SHALL BE MADE SO THAT ITS SEVERAL COMPONENT PARTS SHALL FUNCTION AS A WORKABLE SYSTEM COMPLETE WITH ALL ACCESSORIES NECESSARY FOR ITS OPERATION. ALL MATERIAL AND EQUIPMENT SHALL BE INSTALLED IN ACCORDANCE WITH THE MANUFACTURER'S RECOMMENDATIONS, INSTRUCTIONS AND/OR INSTALLATION DRAWINGS AND IN ACCORDANCE WITH NECA STANDARDS. MATERIALS AND EQUIPMENT SHALL BE NEW AND SHALL CONFORM WITH APPLICABLE INDUSTRY STANDARDS, NEMA STANDARDS AND UNDERWRITERS LABORATORIES STANDARDS WHERE APPLICABLE.
- F. SUBMITTALS: PROVIDE MATERIAL AND EQUIPMENT SUBMITTALS CONTAINING A COMPLETE LISTING OF MATERIAL AND EQUIPMENT SHOWN ON THE DRAWINGS. INCLUDE CATALOG NUMBERS, WIRING DIAGRAMS, ROUGH-IN DIMENSIONS AND PERFORMANCE DATA FOR ALL MATERIAL AND EQUIPMENT. SUBMITTALS SHALL BE IN ELECTRONIC .PDF FORMAT, SEPARATE FROM WORK FURNISHED UNDER OTHER DIVISIONS. INDEX AND CLEARLY IDENTIFY ALL MATERIAL AND EQUIPMENT BY ITEM, NAME OR DESIGNATION USED ON THE DRAWINGS. SUBMITTAL REVIEW IS FOR GENERAL DESIGN AND ARRANGEMENT ONLY AND DOES NOT RELIEVE THE CONTRACTOR FROM ANY REQUIREMENTS OF THE CONTRACT DOCUMENTS. THE SUBMITTALS ARE NOT CHECKED FOR QUANTITY, DIMENSION, OR FOR PROPER OPERATION. WHERE DEVIATIONS OF A SUBSTITUTE PRODUCT OR SYSTEM PERFORMANCE HAVE NOT BEEN SPECIFICALLY NOTED IN THE SUBMITTAL BY THE CONTRACTOR, PROVISIONS OF A COMPLETE AND SATISFACTORY WORKING INSTALLATION IS THE SOLE RESPONSIBILITY OF THE CONTRACTOR.
- G. OPERATION AND MAINTENANCE MANUALS: PROVIDE OPERATION AND MAINTENANCE MANUALS FOR TRAINING OF THE OWNER'S PERSONNEL. DESCRIBE THE PROCEDURES NECESSARY TO OPERATE THE SYSTEM INCLUDING START-UP, OPERATION, EMERGENCY OPERATION AND SHUTDOWN. PROVIDE INSTRUCTIONS AND A SCHEDULE OF PREVENTIVE MAINTENANCE IN TABULAR FORM FOR ALL ROUTINE CLEANING, INSPECTION AND LUBRICATION WITH RECOMMENDED LUBRICANTS. PROVIDE INSTRUCTIONS FOR MINOR REPAIR OR ADJUSTMENTS REQUIRED FOR PREVENTIVE MAINTENANCE ROUTINES. PROVIDE MANUFACTURER'S DESCRIPTIVE LITERATURE INCLUDING APPROVED SHOP DRAWINGS COVERING DEVICES USED IN ANY CONTRACTOR-PROVIDED EQUIPMENT OR SYSTEMS WITH ILLUSTRATION, EXPLODED VIEWS, ETC.
- H. WARRANTY: THE CONTRACTOR SHALL GUARANTEE ALL WORK EXECUTED UNDER THIS CONTRACT TO BE FREE FROM DEFECTS IN MATERIALS AND WORKMANSHIP FOR A PERIOD OF ONE YEAR FROM BENEFICIAL OCCUPANCY. ANY FAULTY MATERIALS OR WORKMANSHIP SHALL BE REPAIRED OR REPLACED TO THE SATISFACTION OF THE OWNER DURING THE GUARANTEE PERIOD.
- I. PERMITS: SECURE AND PAY FOR ALL FEES, PERMITS, ETC. REQUIRED BY LOCAL AND STATE AGENCIES.
- J. REFERENCE SYMBOLS: THE ELECTRICAL "LEGEND" ON THE DRAWINGS IS A STANDARDIZED VERSION, AND ALL SYMBOLS SHOWN MAY NOT BE USED. USE THE "LEGEND" AS A REFERENCE FOR THE SYMBOLS USED ON THE DRAWINGS.

- 26.05.05 - SELECTIVE DEMOLITION FOR ELECTRICAL
- A. DEMOLITION DRAWINGS ARE BASED ON A NON-DESTRUCTIVE FIELD OBSERVATION. REPORT DISCREPANCIES TO OWNER BEFORE DISTURBING THE EXISTING INSTALLATION. DISCONNECT ELECTRICAL SYSTEMS IN WALLS, FLOORS, AND CEILINGS SCHEDULED FOR REMOVAL. PROVIDE TEMPORARY WIRING AND CONNECTIONS TO MAINTAIN ALL EXISTING ELECTRICAL SYSTEMS (TELEPHONE, FIRE ALARM, LIGHTING, ELECTRICAL SERVICE, ETC.) IN SERVICE DURING CONSTRUCTION. DISABLE SYSTEMS ONLY TO MAKE SWITCHOVERS AND CONNECTIONS.
- B. OBTAIN PERMISSION FROM OWNER AT LEAST 24 HOURS BEFORE PARTIALLY OR COMPLETELY DISABLING SYSTEM. MINIMIZE OUTAGE DURATION AND MAKE TEMPORARY CONNECTIONS TO MAINTAIN SERVICE IN AREAS ADJACENT TO WORK AREA. WHEN WORK MUST BE PERFORMED ON ENERGIZED EQUIPMENT OR CIRCUITS, USE PERSONNEL EXPERIENCED IN SUCH OPERATIONS.
- C. REMOVE, RELOCATE AND EXTEND EXISTING INSTALLATIONS TO ACCOMMODATE NEW CONSTRUCTION. REMOVE ABANDONED WIRING TO SOURCE OF SUPPLY. REMOVE EXPOSED ABANDONED CONDUIT, INCLUDING ABANDONED CONDUIT ABOVE ACCESSIBLE CEILING FINISHES. WHERE ABANDONED CONDUIT ENTERS EXISTING SURFACES TO REMAIN, CUT CONDUIT FLUSH WITH WALLS AND FLOORS, AND PATCH SURFACES. DISCONNECT ABANDONED OUTLETS AND REMOVE DEVICES. REMOVE ABANDONED OUTLETS IF CONDUIT SERVICING THEM IS ABANDONED AND REMOVED. PROVIDE BLANK COVER FOR ABANDONED OUTLETS WHICH ARE NOT REMOVED.
- D. DISCONNECT AND REMOVE ABANDONED PANELBOARDS AND DISTRIBUTION EQUIPMENT. DISCONNECT AND REMOVE ELECTRICAL DEVICES AND EQUIPMENT SERVING UTILIZATION EQUIPMENT THAT HAS BEEN REMOVED. DISCONNECT AND REMOVE ABANDONED LUMINAIRES. REMOVE BRACKETS, STEMS, HANGERS AND OTHER ACCESSORIES. REPAIR ADJACENT CONSTRUCTION AND FINISHES DAMAGED DURING DEMOLITION AND EXTENSION WORK. MAINTAIN ACCESS TO EXISTING ELECTRICAL INSTALLATIONS WHICH REMAIN ACTIVE.

- 26.05.19 - WIRE AND CABLE
- A. SUBMITTALS: NONE REQUIRED FOR THIS SECTION.
- B. MATERIALS:
- ALL CONDUCTORS SHALL BE COPPER WITH TYPE XHHW, THWN, THW OR THHN INSULATION. MINIMUM BRANCH CIRCUIT CONDUCTOR SIZE SHALL BE #12 AWG. MINIMUM CONTROL CIRCUIT CONDUCTOR SIZE SHALL BE #18 AWG. CONTROL CIRCUITS SHALL BE COPPER, STRANDED CONDUCTOR, 600V INSULATION, THHN/THWN, MINIMUM SIZE #18 AWG.
 - 0-10V DIMMING/POWER MC CABLE (TYPE MC-PCS), SIZE #12 THROUGH #10 AWG WITH 16-2 CONTROL CABLES: SOLID COPPER CONDUCTOR, 600 VOLT THERMOPLASTIC INSULATION, RATED 90° C DRY, 75° WET, INSULATED GREEN GROUNDING CONDUCTOR, AND GALVANIZED STEEL OR ALUMINUM ARMOR OVER MYLAR.
- C. INSTALLATION:
- COLOR CODE WIRES BY LINE OR PHASE. COLOR CODE THE 120/208V CONDUCTORS BLACK, RED, BLUE, AND WHITE. FOR 277/480 VOLT SYSTEMS, USE BROWN, ORANGE, YELLOW, AND WHITE WITH AN IDENTIFIABLE COLORED STRIPE.
 - DO NOT SHARE NEUTRAL CONDUCTORS. PROVIDE A DEDICATED NEUTRAL CONDUCTOR FOR EACH BRANCH CIRCUIT THAT REQUIRES A NEUTRAL.
 - USE PROPERLY SIZED INSULATED SPRING WIRE CONNECTORS WITH PLASTIC CAPS FOR ALL CONDUCTORS #8 AWG AND SMALLER. TERMINATE #6 AWG AND LARGER CONDUCTORS WITH CRIMP OR COMPRESSION TYPE CONNECTORS INSTALLED WITH TOOL RECOMMENDED BY CONNECTION MANUFACTURER AND INSULATE WITH PROPERLY SIZED 600 VOLT RATED HEAT SHRINK TUBING.

- 26.05.26 - GROUNDING AND BONDING
- A. SUBMITTALS: NONE REQUIRED FOR THIS SECTION.
- B. INSTALLATION:
- PROVIDE A SEPARATE, INSULATED EQUIPMENT GROUNDING CONDUCTOR IN ALL NEW BRANCH CIRCUITS. TERMINATE EACH END ON A GROUNDING LUG, BUS, OR BUSHING.
 - MECHANICAL CONNECTORS: NON-REVERSIBLE CRIMP TYPE LUGS ONLY. USE FACTORY MADE COMPRESSION LUG FOR ALL TERMINATIONS. CRIMP TYPE ONE HOLE FOR CONDUCTORS SMALLER THAN 6 AWG.
 - BOND TOGETHER METAL RACEWAY SYSTEMS AND GROUNDING CONDUCTOR IN RACEWAYS AND CABLES.

- 26.05.33 - RACEWAY AND BOXES FOR ELECTRICAL SYSTEMS
- A. SUBMITTALS: NONE REQUIRED FOR THIS SECTION.
- B. MATERIALS:
- RIGID STEEL CONDUIT: ANSI C80.1. FITTINGS AND CONDUIT BODIES: ANSI/NEMA FB 1; THREADED TYPE WITH INSULATED THROAT BUSHINGS, MATERIAL TO MATCH CONDUIT.
 - INTERMEDIATE METAL CONDUIT (IMC): GALVANIZED STEEL. FITTINGS AND CONDUIT BODIES: ANSI/NEMA FB 1; USE FITTINGS AND CONDUIT BODIES SPECIFIED ABOVE FOR RIGID STEEL CONDUIT.
 - ELECTRICAL METALLIC TUBING CONDUIT (EMT): ANSI C80.3. GALVANIZED TUBING. FITTINGS AND CONDUIT BODIES: ANSI/NEMA FB 1; STEEL OR MALLEABLE IRON, COMPRESSION TYPE OR SET SCREW FITTINGS WITH INSULATED THROAT BUSHINGS. DIE-CAST FITTINGS ARE NOT ACCEPTABLE.
 - FLEXIBLE METAL CONDUIT: FS WW-C-566; STEEL, FULL WALL OR REDUCED WALL THICKNESS. FITTINGS AND CONDUIT BODIES: ANSI/NEMA FB 1; STEEL OR MALLEABLE IRON WITH INSULATED THROAT BUSHINGS. DIE CAST FITTINGS ARE NOT ACCEPTABLE.
 - PROVIDE GALVANIZED OR CADMIUM PLATED, ONE PIECE PRESSED STEEL OUTLET BOXES 4 INCH SQUARE OR OCTAGONAL, 1-1/2 INCHES DEEP MINIMUM SIZE FOR USE IN INTERIOR AREAS.
- C. INSTALLATION:
- INSTALL CONDUIT FOR ALL SYSTEMS UNLESS OTHERWISE NOTED, 1/2 INCH MINIMUM SIZE.
 - EXPOSED DRY INTERIOR LOCATIONS SHALL BE RIGID STEEL CONDUIT OR INTERMEDIATE METAL CONDUIT. ELECTRICAL METALLIC TUBING MAY BE USED EXPOSED WHEN INSTALLED ON THE CEILING, A MINIMUM OF TEN FEET ABOVE THE FLOOR OR WHERE NOT SUBJECT TO PHYSICAL DAMAGE. EMT MAY ALSO BE USED FOR CONCEALED, DRY, INTERIOR LOCATIONS.
 - PAINT ALL EXPOSED CONDUIT TO MATCH SURFACE TO WHICH IT IS ATTACHED OR CROSSES. CLEAN GREASY OR DIRTY CONDUIT PRIOR TO PAINTING IN ACCORDANCE WITH PAINT MANUFACTURER'S INSTRUCTIONS.
 - SUPPORT BOXES INDEPENDENTLY OF CONDUIT.

- 26.27.26 - WIRING DEVICES
- A. SUBMITTALS: SUBMIT PRODUCT DATA FOR APPROVAL.
- B. MATERIALS:
- WALL DIMMERS FOR 0-10V LED CIRCUITS: UL 1472; ANSI/NEMA WD6; DECORA-STYLE, COMMERCIAL GRADE PRESET WALL DIMMER SWITCH, 0-10V CONTROL FOR LED DRIVERS WITH NO POWER PACK REQUIRED TO SWITCH LINE VOLTAGE LOAD (8 A, 120-277 V); ADJUSTABLE HIGH-END AND LOW-END TRIM. COLOR: WHITE. HANDLE: PADDLE SWITCH FOR ON/OFF OPERATION WITH SMALL, DISCRETE, CAPTIVE LINEAR SLIDE FOR DIMMER ADJUSTMENT. PROVIDE SINGLE POLE UNLESS OTHERWISE INDICATED ON PLANS. DIMMER SHALL BE FULLY COMPATIBLE WITH ALL LOADS CONNECTED FOR SMOOTH, FLICKER-FREE DIMMING OPERATION.
 - WALL PLATES: DECORATIVE COVER PLATES IN FINISHED AREAS SHALL BE 430 OR 302 STAINLESS STEEL. PROVIDE 1/2 INCH RAISED, SQUARE, GALVANIZED OR CADMIUM PLATED, PRESSED STEEL COVER PLATE SUPPORTING DEVICES INDEPENDENT OF THE OUTLET BOX FOR ALL EXPOSED WORK.
- C. INSTALLATION:
- INSTALL WALL SWITCHES AND DIMMERS 48 INCHES ABOVE FLOOR, OFF POSITION DOWN.
 - INSTALL GALVANIZED STEEL PLATES ON OUTLET BOXES AND JUNCTION BOXES IN UNFINISHED AREAS, ABOVE ACCESSIBLE CEILINGS, AND ON SURFACE-MOUNTED OUTLETS.

- 26.50.00 - LIGHTING FIXTURES
- A. SUBMITTALS: SUBMIT PRODUCT DATA FOR APPROVAL.
- B. MATERIALS:
- LUMINAIRES: PROVIDE AND INSTALL ALL LIGHTING EQUIPMENT OR APPROVED EQUAL AS SHOWN ON THE DRAWINGS AND DESCRIBED IN THE "FIXTURE SCHEDULE". PROVIDE LIGHTING EQUIPMENT COMPLETE, WIRED, ASSEMBLED, WITH PROPER FLANGES, MOUNTING SUPPORTS, HARDWARE, ETC.
 - LED DRIVERS: PROVIDE UL LISTED POWER SUPPLY AS RECOMMENDED BY THE LED FIXTURE MANUFACTURER FOR OPERATION OF THE SPECIFIED LED LAMPS. POWER SUPPLY SHALL BE INTEGRAL TO THE LUMINAIRE UNLESS OTHERWISE NOTED ON THE PLANS. POWER SUPPLY SHALL OPERATE AT THE SUPPLY VOLTAGE INDICATED ON THE PLANS AND SHALL BE LISTED FOR STARTING AND OPERATING THE LAMPS AT 75F AVERAGE INDOOR TEMPERATURE.
 - LED DIMMING DRIVERS: PROVIDE UL LISTED 0-10V DIMMING BALLAST AS RECOMMENDED BY THE LED FIXTURE MANUFACTURER FOR OPERATION OF THE SPECIFIED LED LAMPS, FULLY COMPATIBLE WITH THE DIMMING SYSTEM OR DIMMING SWITCH CONTROLLING THE FIXTURE. DRIVER SHALL BE INTEGRAL TO THE FIXTURE AND CAPABLE OF DIMMING THE LUMINAIRE TO 20% OUTPUT MINIMUM UNLESS OTHERWISE SCHEDULED ON THE PLANS. POWER SUPPLY SHALL BE DUAL VOLTAGE (120/277V) WHERE AVAILABLE AND OPERATE AT THE SUPPLY VOLTAGE INDICATED ON THE PLANS.
 - LED LAMPS: UNLESS OTHERWISE SCHEDULED ON THE PLANS, PROVIDE NOMINAL 3000K, WITH MINIMUM 75CRI AND A MINIMUM L70 LAMP LIFE OF 50,000 HOURS.
- C. INSTALLATION:
- PROVIDE LUMINAIRE DISCONNECTING MEANS IN BALLAST/DRIVER CHANNEL OF EACH LIGHT FIXTURE. WHERE THE LUMINAIRE IS FED FROM A MULTI-WIRE BRANCH CIRCUIT, PROVIDE MULTI-POLE DISCONNECT TO SIMULTANEOUSLY BREAK ALL SUPPLY CONDUCTORS TO THE BALLAST, INCLUDING THE GROUNDING CONDUCTOR.
 - CONTRACTOR SHALL INSTALL LIGHTING FIXTURES IN STRICT ACCORDANCE WITH MANUFACTURER'S INSTALLATION INSTRUCTIONS.



RSA Engineering, Inc.
MECHANICAL AND ELECTRICAL CONSULTING ENGINEERS
670 West Friesweil Lane, Suite 200
Anchorage, AK 99503
Phone (907) 276-0521
Corporate No.: AECC042

VALDEZ CIVIC CENTER THEATRE LIGHTING UPGRADES

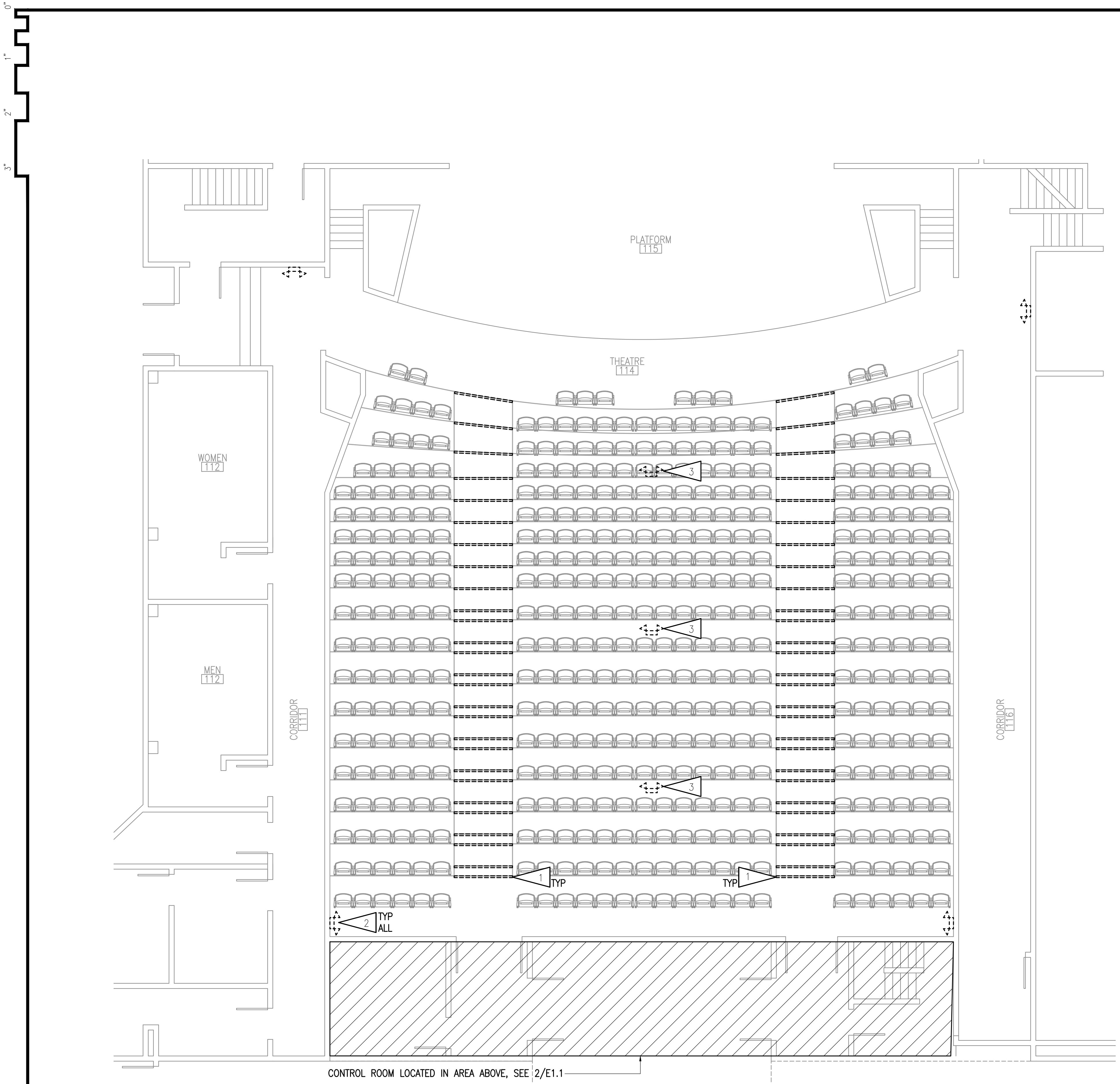
CITY OF VALDEZ
110 CLIFTON DR.
VALDEZ, AK 99686

REVISIONS:

DRAWN BY: KB
CHECKED BY: DB, TEH
DATE: 11/9/2020
JOB NUMBER: M0089
DWG FILE: M0089-Eseries

DRAWING TITLE:
ELECTRICAL LEGEND,
FIXTURE SCHEDULE,
SPECIFICATIONS,
AND DETAILS

SHEET:
E0.1



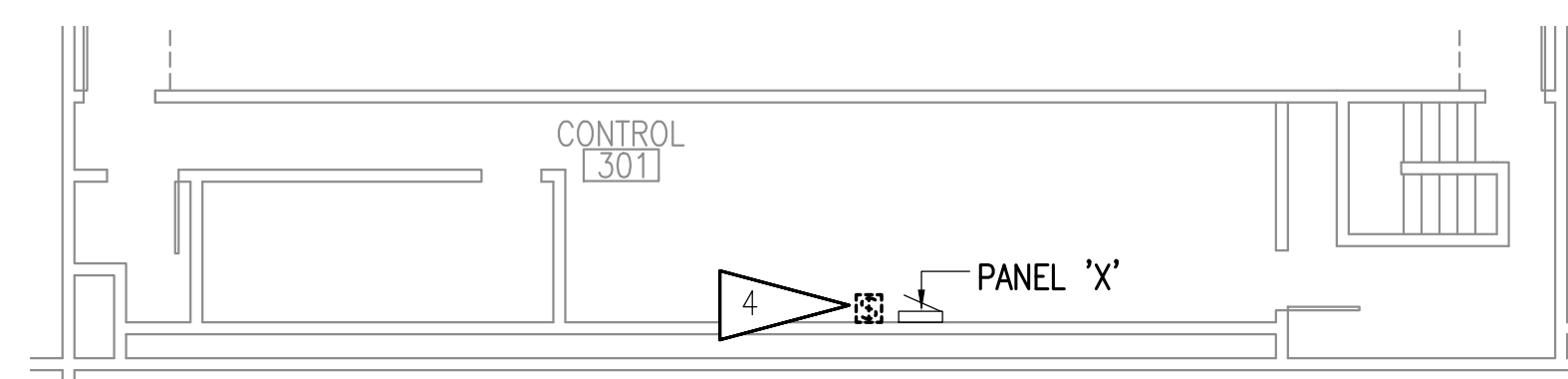
1 ELECTRICAL DEMOLITION PLAN
3/16" = 1'-0"

GENERAL NOTES:

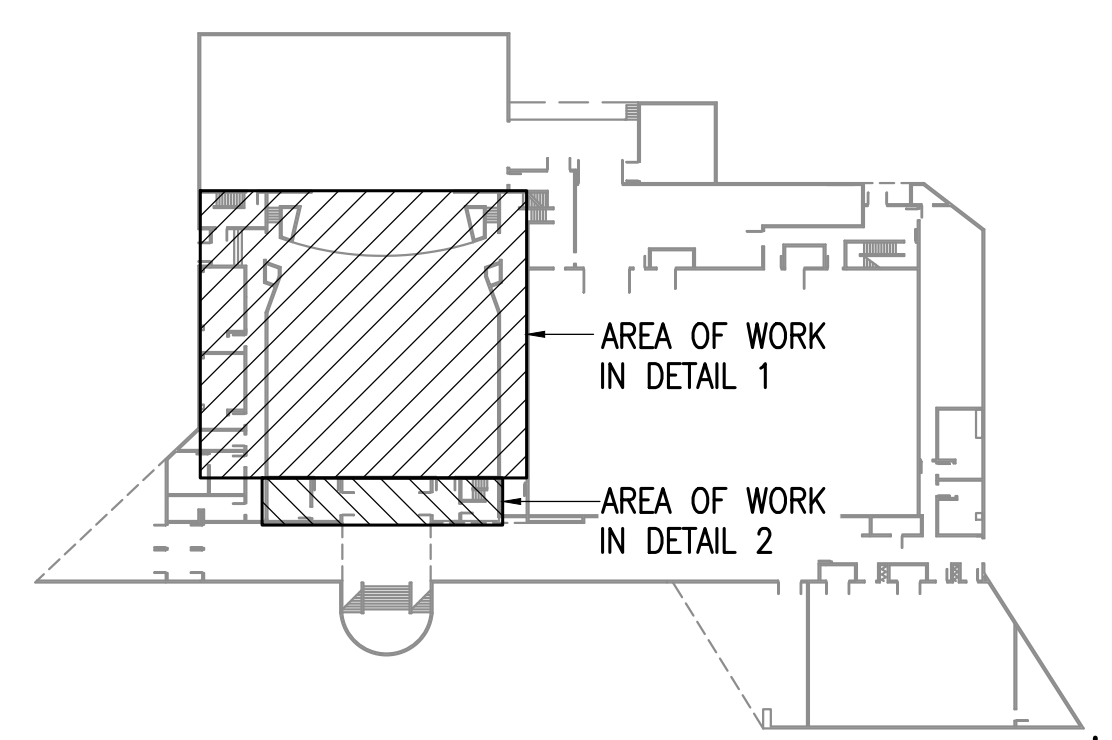
- THE INFORMATION SHOWN ON THIS DRAWING IS TAKEN FROM AS-BUILT DRAWINGS AND A NON-DESTRUCTIVE WALK THROUGH OF THE FACILITY. THERE IS NO WARRANTY OR GUARANTEE AS TO THE ACCURACY OF THE INFORMATION SHOWN HERE-IN. THE CONTRACTOR SHALL FIELD VERIFY ALL ITEMS SCHEDULED FOR DEMOLITION PRIOR TO START OF WORK.
- THE OWNER SHALL HAVE FIRST RIGHT OF REFUSAL ON ALL SALVAGEABLE MATERIALS. THE CONTRACTOR SHALL DELIVER SALVAGED MATERIALS TO A WAREHOUSE AS DIRECTED BY THE OWNER. THE CONTRACTOR SHALL DISPOSE OF, OFF SITE, ALL UNWANTED MATERIALS.
- DASHED OR DOTTED LINES INDICATE ITEMS TO BE REMOVED. SOLID LINES INDICATE EXISTING ITEMS TO REMAIN.
- LOCATION OF PANEL 'X' WITHIN CONTROL ROOM 301 IS APPROXIMATE ONLY. FIELD VERIFY EXACT LOCATION PRIOR TO BEGINNING WORK.

SHEET NOTES:

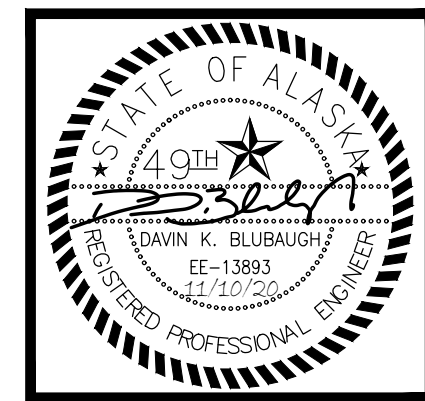
- DEMOLISH STEP LIGHT, RACEWAY, AND CONDUCTORS BACK TO SOURCE PANEL X IN CONTROL ROOM ABOVE. SEE 2/E1.1 FOR LOCATION OF PANEL.
- DEMOLISH EMERGENCY FIXTURE. SALVAGE CONDUIT AND WIRING FOR REUSE.
- EMERGENCY FIXTURE NOTED IS LOCATED ON CATWALK ABOVE.
- DEMOLISH STEP LIGHT DIMMING SWITCH, CONDUIT AND CONDUCTORS BACK TO SOURCE PANEL X.



2 CONTROL ROOM DEMOLITION PLAN
1/8" = 1'-0"



KEY PLAN
NO SCALE



RSA Engineering, Inc.
MECHANICAL AND ELECTRICAL CONSULTING ENGINEERS
670 West Friesend Lane, Suite 200
Anchorage, AK 99503
Phone (907) 276-0521
Corporate No.: AECC542

VALDEZ CIVIC CENTER THEATRE LIGHTING UPGRADES

CITY OF VALDEZ
110 CLIFTON DR.
VALDEZ, AK 99686

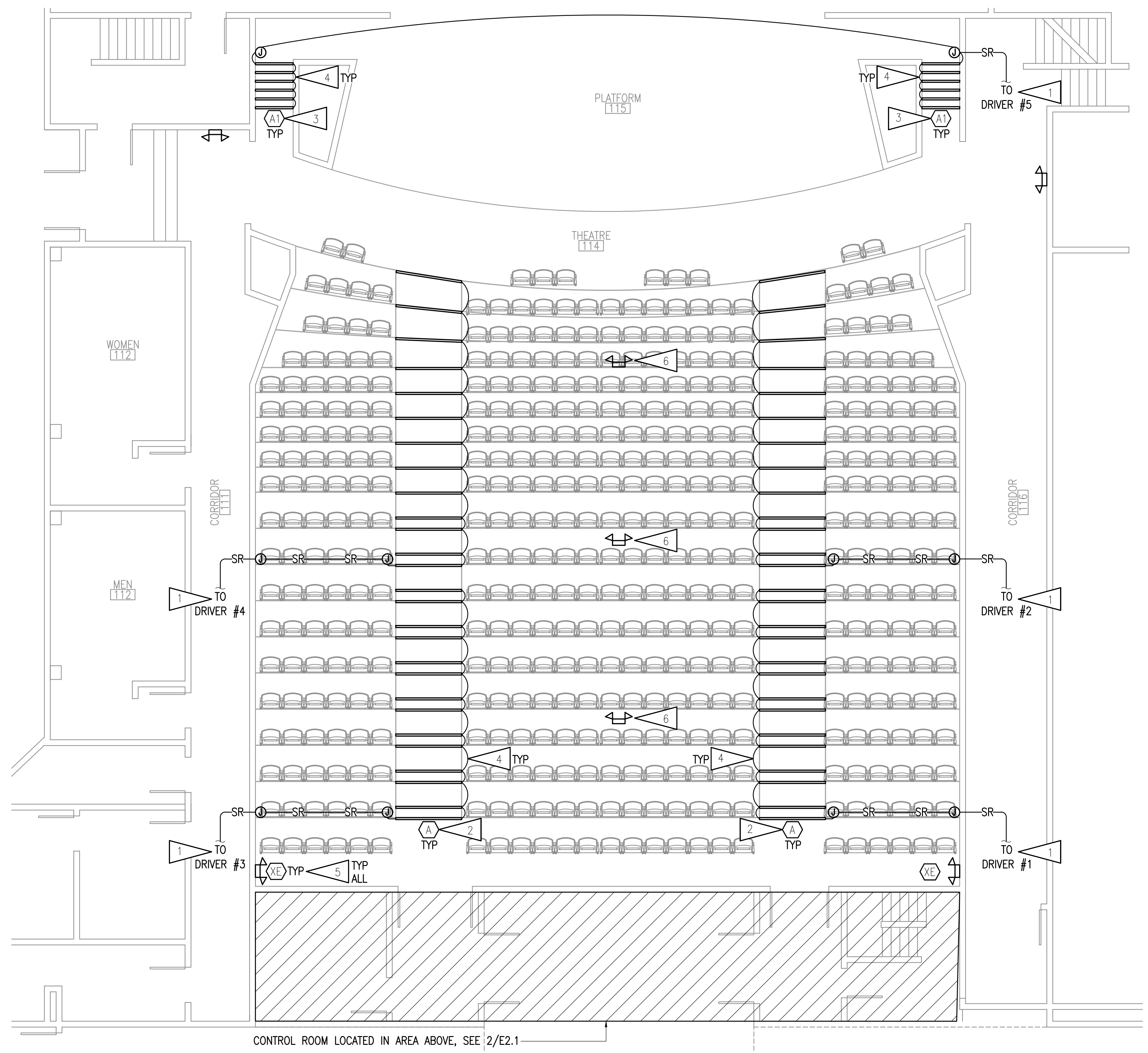
REVISIONS:

DRAWN BY: KB
CHECKED BY: DB, TEH
DATE: 11/9/2020
JOB NUMBER: M0089
DWG FILE: M0089-Eseries

DRAWING TITLE:
ELECTRICAL DEMOLITION
PLANS

SHEET:
E1.1

0"
1"
2"
3"



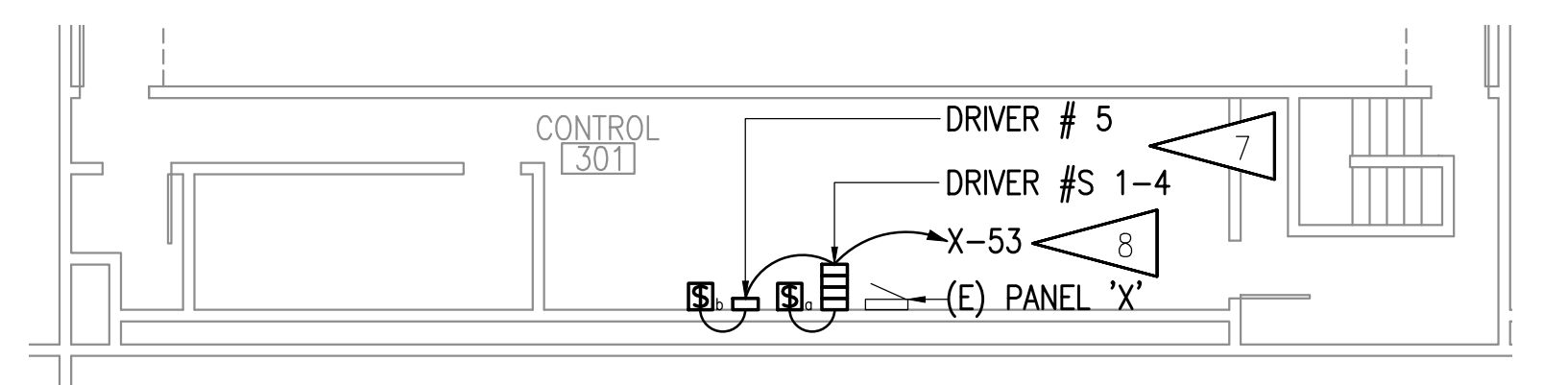
1 ELECTRICAL REMODEL PLAN
3/16" = 1'-0"

GENERAL NOTES:

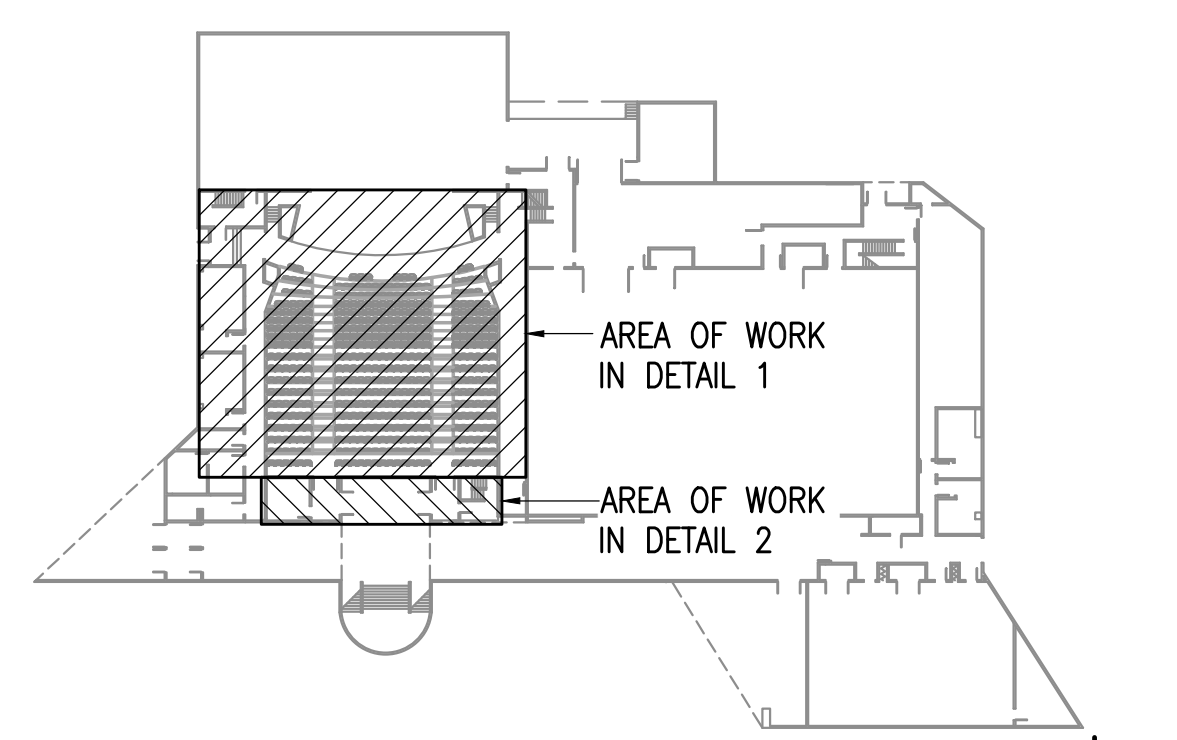
- A. THE INFORMATION SHOWN ON THIS DRAWING IS TAKEN FROM AS-BUILT DRAWINGS AND A NON-DESTRUCTIVE WALK THROUGH OF THE FACILITY. THERE IS NO WARRANTY OR GUARANTEE AS TO THE ACCURACY OF THE INFORMATION SHOWN HERE-IN. THE CONTRACTOR SHALL FIELD VERIFY ALL ITEMS PRIOR TO START OF WORK.
- B. LOCATION OF PANEL 'X' WITHIN CONTROL ROOM 301 IS APPROXIMATE ONLY. FIELD VERIFY EXACT LOCATION PRIOR TO BEGINNING WORK.
- C. REFERENCE 1/E0.1 FOR TYPICAL STEP LIGHTING DETAILS.
- D. LOW VOLTAGE WIRING SIZES NOT SHOWN, BUT SHALL BE PROVIDED BY THE CONTRACTOR IN STRICT ACCORDANCE WITH LIGHTING AND DRIVER MANUFACTURER'S INSTALLATION INSTRUCTIONS. THIS INCLUDES ALL WIRING BETWEEN DRIVERS AND FIXTURES, AND BETWEEN LOW VOLTAGE DIMMING SWITCHES AND DRIVERS.
- E. COORDINATE LIGHTING INSTALLATION WITH CARPET INSTALLATION. REFERENCE SHEETS ID-1 AND ID-2.

SHEET NOTES:

- 1. FIELD ROUTE 1/2" CONDUIT AND 24VDC CONDUCTORS FROM STEP LIGHT FIXTURES TO DRIVER NOTED WITHIN CONTROL ROOM 301. THE INTENT OF THE DESIGN IS TO PROVIDE SURFACE RACEWAY FROM DRIVERS TO FIXTURES, ROUTED CLEAR FROM VIEW TO FURTHEST EXTENT PRACTICAL. REFERENCE 1/E0.1 FOR ADDITIONAL INFORMATION. CONTRACTOR TO COORDINATE FINAL ROUTING WITH THE CITY OF VALDEZ PROJECT MANAGER PRIOR TO BEGINNING WORK.
- 2. FIXTURES NOTED TO BE CONTROLLED VIA 0-10V DIMMING SWITCH 'a' LOCATED IN CONTROL ROOM 301.
- 3. FIXTURES NOTED TO BE CONTROLLED VIA 0-10V DIMMING SWITCH 'b' LOCATED IN CONTROL ROOM 301.
- 4. SURFACE RACEWAY BETWEEN FIXTURES SHALL BE PROVIDED BY THE CONTRACTOR AS AN ACCESSORY TO THE STAIR FIXTURES. REFERENCE THE FIXTURE SCHEDULE AND DETAIL 1 ON SHEET E0.1.
- 5. RECONNECT SALVAGED CONDUIT AND WIRE TO NEW EMERGENCY FIXTURE.
- 6. EMERGENCY FIXTURE NOTED IS LOCATED ON CATWALK ABOVE.
- 7. FIELD LOCATE NEW DRIVERS AND 0-10V DIMMING SWITCHES IN CONTROL ROOM 301. COORDINATE FINAL LOCATION WITH THE CITY OF VALDEZ PROJECT MANAGER PRIOR TO ROUGH-IN.
- 8. CONNECT NEW DRIVERS TO BREAKER INDICATED IN PANEL X, WHICH IS THE SAME CIRCUIT BREAKER AS THE PREVIOUSLY DEMOLISHED STAIR LIGHTING. PROVIDE 1/2"C, 3#12 AWG CU FOR NEW CIRCUIT.



2 CONTROL ROOM REMODEL PLAN
1/8" = 1'-0"



KEY PLAN
NO SCALE



RSA
Engineering, Inc.
MECHANICAL AND ELECTRICAL CONSULTING ENGINEERS
670 West Freewood Lane, Suite 200
Anchorage, AK 99503
Phone (907) 276-0521
Corporate No.: AECC542

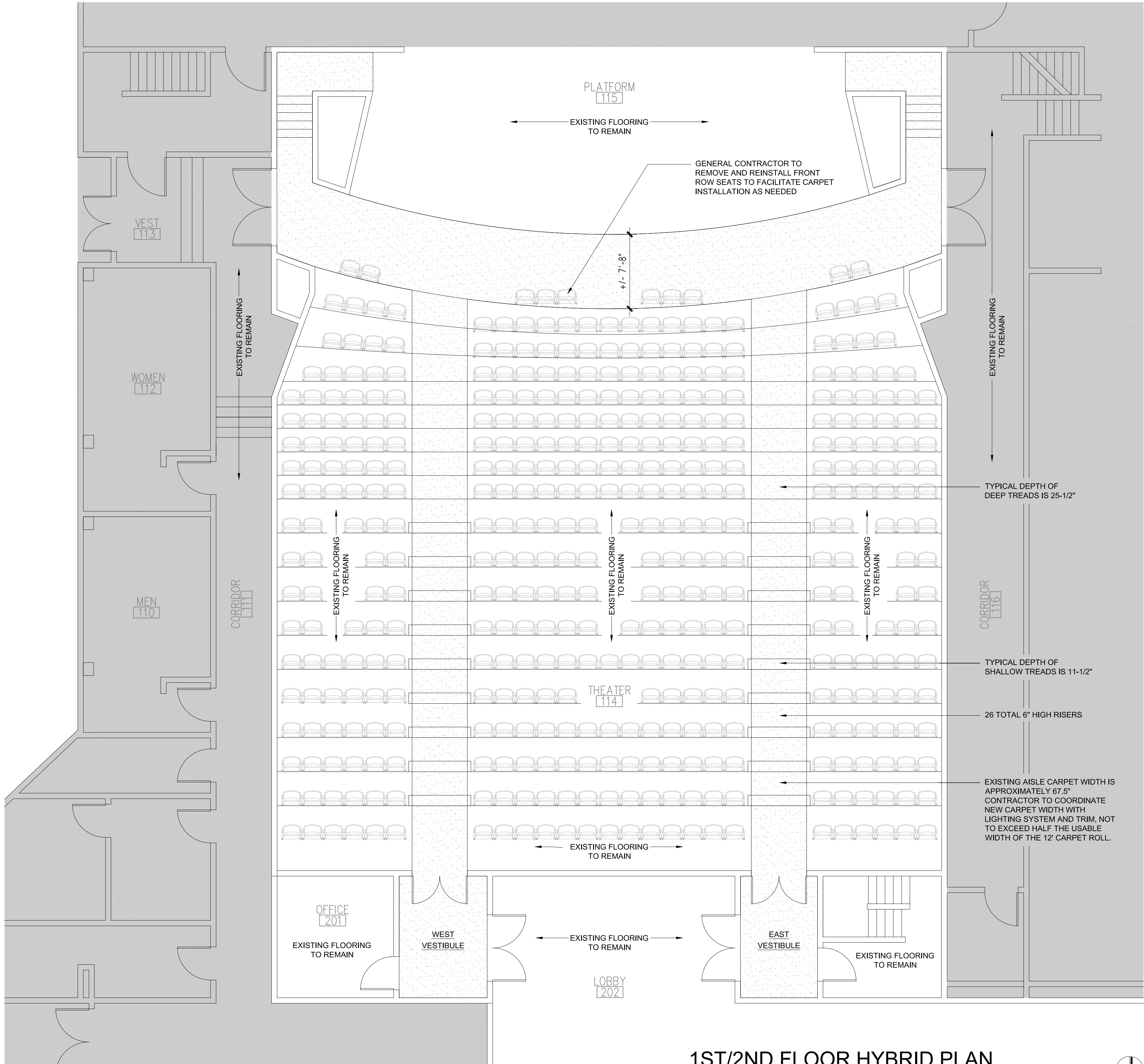
VALDEZ CIVIC CENTER THEATRE LIGHTING UPGRADES
CITY OF VALDEZ
110 CLIFTON DR.
VALDEZ, AK 99686

REVISIONS:

DRAWN BY: KB
CHECKED BY: DB, TEH
DATE: 11/9/2020
JOB NUMBER: M0089
DWG FILE: M0089-Eseries

DRAWING TITLE:
ELECTRICAL REMODEL
PLANS

SHEET:
E2.1



1ST/2ND FLOOR HYBRID PLAN

SCALE: 3/16" = 1'-0"



FLOOR FINISHES LEGEND

NEW BROADLOOM CARPET:
MANUFACTURER: SHAW CONTRACT
STYLE: SCEPTER
COLOR: 43321 LONGHORN
(SUBSTITUTIONS SHALL NOT BE ACCEPTED)

GENERAL NOTES

- SCOPE OF FLOOR FINISHES WORK IS LIMITED TO NEW CARPET AND RELATED ACCESSORIES AS SHOWN ON PLAN. ALL OTHER FLOORING TO REMAIN.
- CONTRACTOR SHALL REMOVE AND DISPOSE OF ALL EXISTING CARPET AND RELATED TRANSITIONS AS SHOWN IN DRAWING, AND PREPARE FLOORS PER MANUFACTURER'S SPECIFICATIONS TO RECEIVE NEW CARPET.
- EXISTING WOOD WALL BASE TO REMAIN. NEW CARPET SHALL BE GLUED DIRECTLY TO SLAB/SUB-FLOOR AND INSTALLED UNDER EXISTING WALL BASE.
- CONTRACTOR SHALL USE ADHESIVES PER MANUFACTURER'S RECOMMENDATION, AND INSTALL ALL PRODUCTS PER MANUFACTURER'S RECOMMENDED INSTALLATION METHODS.
- ANY DAMAGE TO WALL BASE, WALL FINISHES, OR SURROUNDING MATERIALS RESULTING FROM DEMOLITION OR INSTALLATION OF NEW FLOORING PRODUCTS SHALL BE REPAIRED/REPLACED BY CONTRACTOR AND FINISHED TO MATCH EXISTING FINISHES WITHIN THE SCOPE OF THIS CONTRACT.
- CONTRACTOR TO FIELD VERIFY ALL DIMENSIONS AND CONDITIONS PRIOR TO ORDERING MATERIALS AND COMMENCING INSTALLATION.
- ANY DISCREPANCIES BETWEEN DRAWINGS AND FIELD CONDITIONS SHALL BE REPORTED TO THE C.O.V. PROJECT MANAGER AND THE DESIGNER.
- CARPET INSTALLATION TO BE COORDINATED WITH NEW STEP LIGHTING SYSTEM.
- PROVIDE ALL NECESSARY FLOORING TRANSITIONS WHERE REQUIRED AT NEW CARPET.
- FLOORING TRANSITIONS BETWEEN CARPET AND CONCRETE AT SEATING AISLE STEPS TO BE PROVIDED AS PART OF THE LIGHTING SYSTEM TRIM.
- ALL FLOOR MATERIAL TRANSITIONS SHALL OCCUR UNDER DOOR CENTERLINE WHERE APPLICABLE, UNLESS EXISTING FIELD CONDITIONS INDICATE OTHERWISE.

VALDEZ CIVIC CENTER THEATRE LIGHTING UPGRADES

CITY OF VALDEZ
110 CLIFTON DR.
VALDEZ, AK 99686

REVISIONS:

DRAWN BY: MJR
CHECKED BY:
DATE: 11/09/2020
JOB NUMBER: M0089
DWG FILE:

DRAWING TITLE:
THEATER
FLOOR FINISH
PLAN

SHEET:
ID-1

RSA
Engineering, Inc.
MECHANICAL AND ELECTRICAL CONSULTING ENGINEERS
670 West Fireweed Lane, Suite 200
Anchorage, AK 99503
Phone (907) 276-0521
Corporate No.: AEC0542

0"
1"
2"
3"

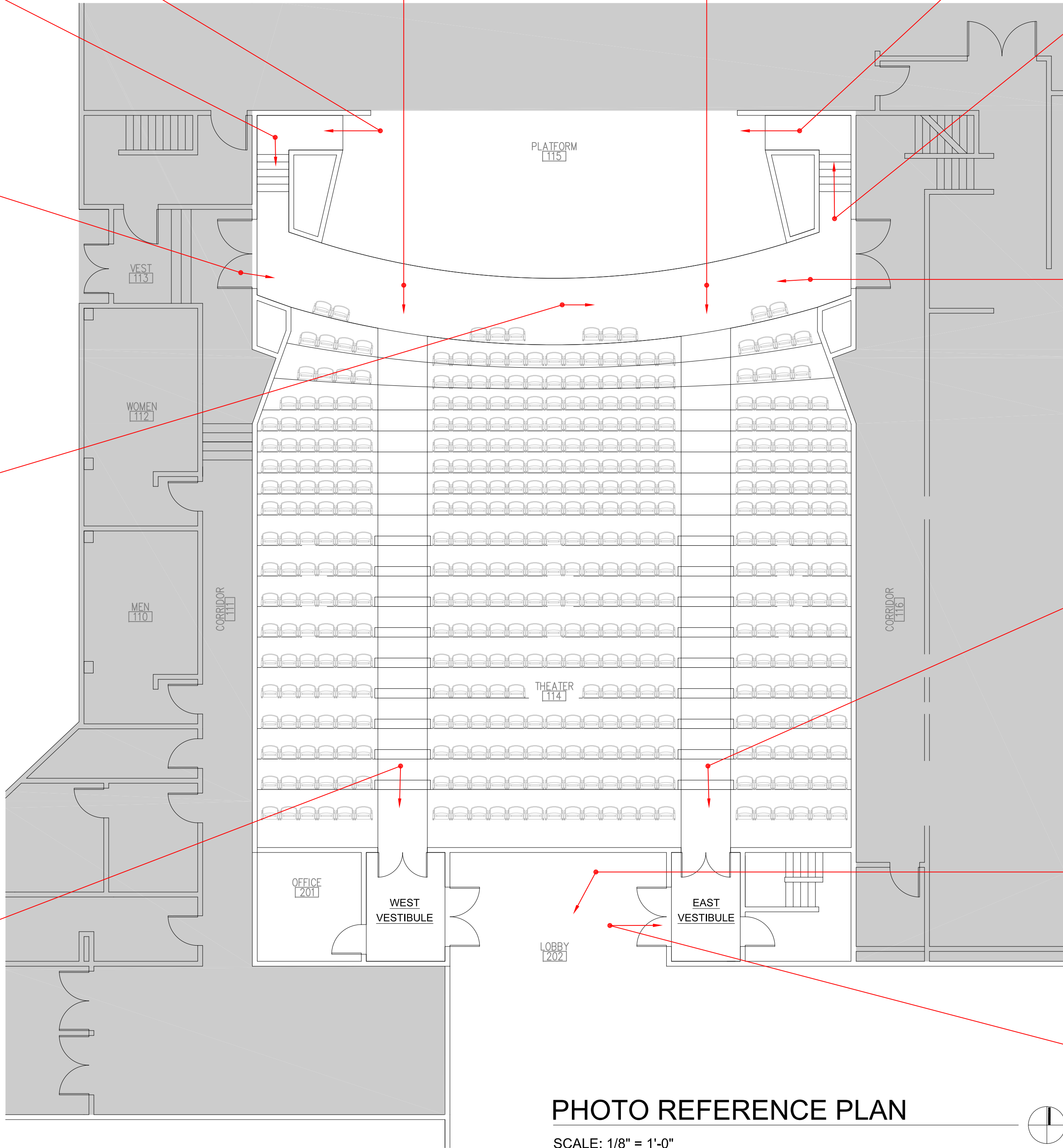
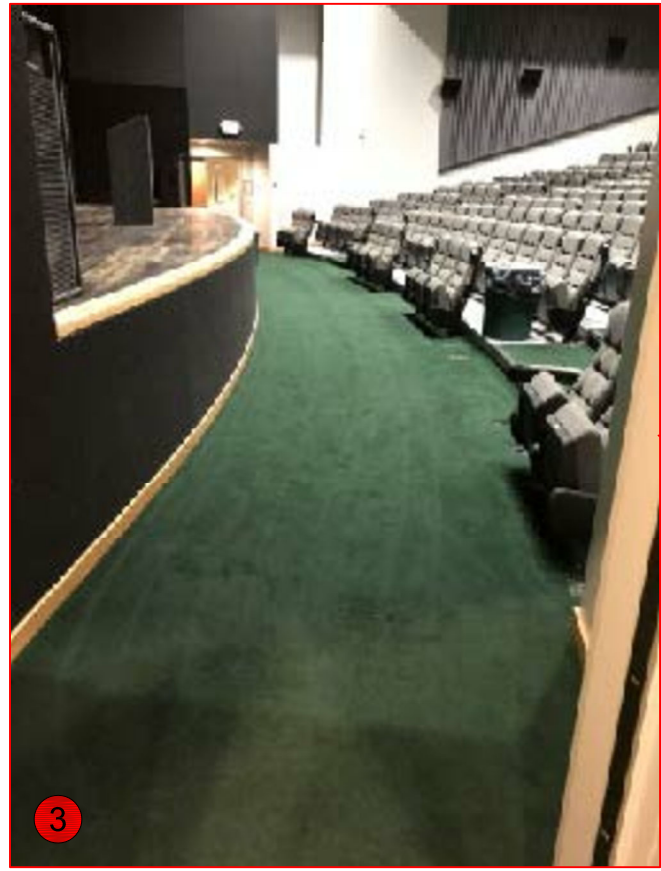
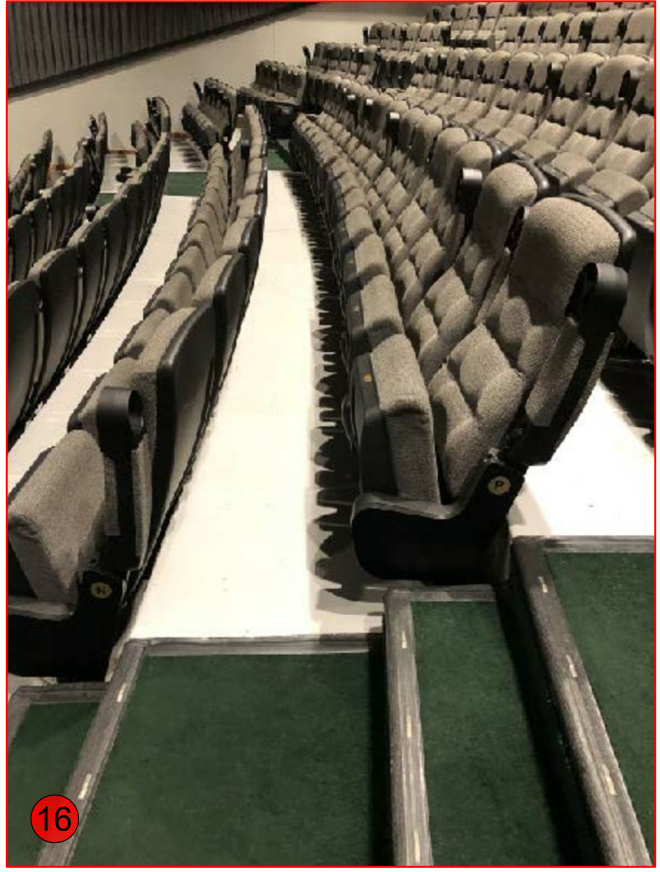


PHOTO REFERENCE PLAN

SCALE: 1/8" = 1'-0"



VALDEZ CIVIC CENTER THEATRE LIGHTING UPGRADES

CITY OF VALDEZ
110 CLIFTON DR.
VALDEZ, AK 99686

REVISIONS:

DRAWN BY: MJR
CHECKED BY:
DATE: 11/09/2020
JOB NUMBER: M0089
DWG FILE:

DRAWING TITLE:
REFERENCE
PHOTOS

SHEET:

ID-2

RSA

Engineering, Inc.
MECHANICAL AND ELECTRICAL CONSULTING ENGINEERS
670 West Fireweed Lane, Suite 200
Anchorage, AK 99503
Phone (907) 276-0521
Corporate No.: AECC0542